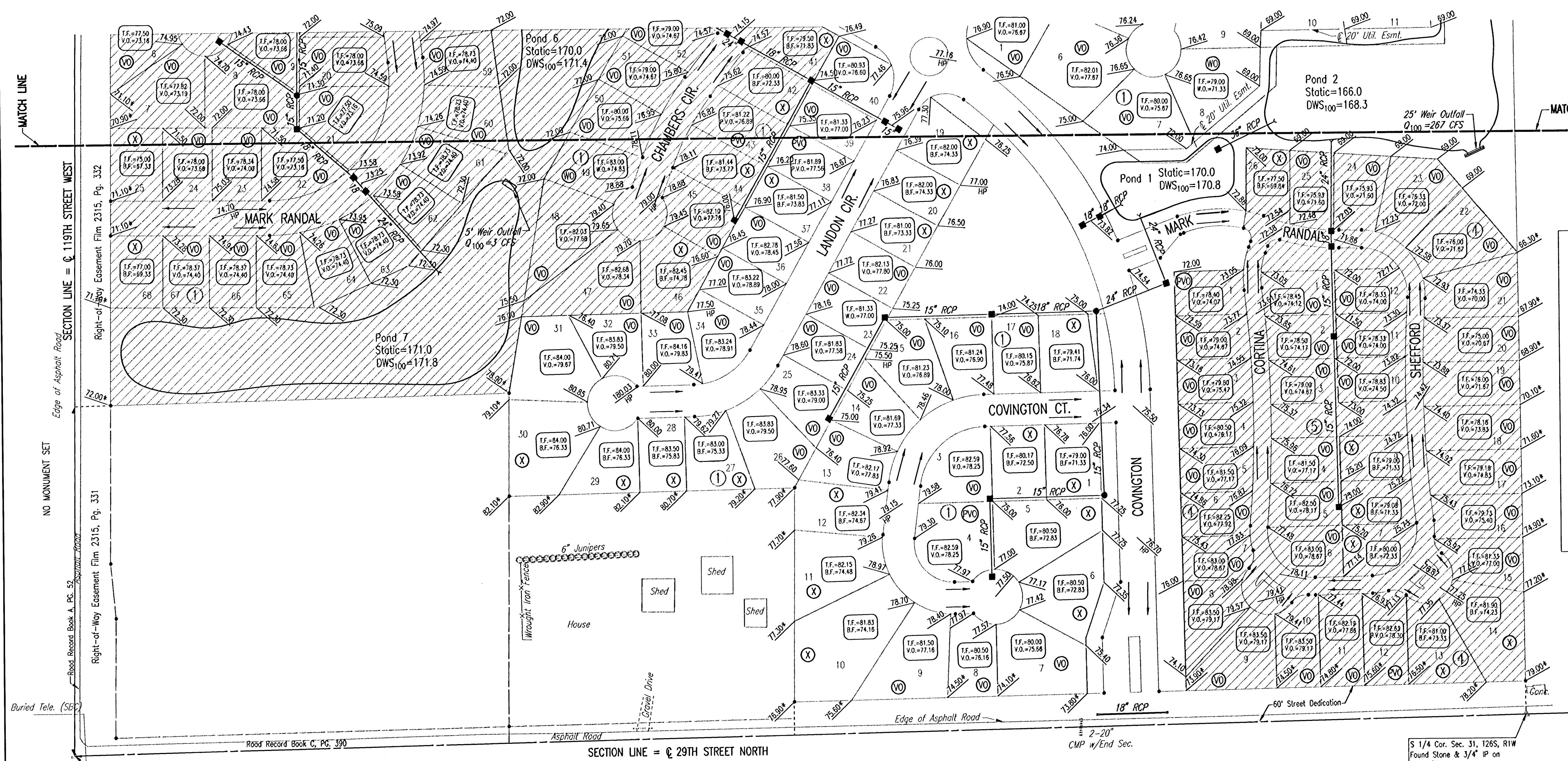


FONTANA

AN ADDITION TO WICHITA,
SEDGWICK COUNTY, KANSAS
FOUR CORNER PLAN

SCALE: 1"=100'



FONTANA	
MINIMUM OPENINGS	ELEVATION (N.G.V.D.)
BLOCK 1	
LOTS 31, 47-68	174.4
BLOCK 3	
LOTS 15-41, 55	171.7
BLOCK 4	
LOTS 22-25	171.3
FONTANA 2nd	
MINIMUM OPENINGS	ELEVATION (N.G.V.D.)
BLOCK 1	
LOTS 7-8	173.8
LOTS 10-11	171.3
LOTS 12-21	171.5
LOTS 32-36	171.7
BLOCK 2	
LOTS 1-8	171.7

- LEGEND**
- SPOT ELEVATION
 - HIGH POINT ELEVATION
 - MATCH EXISTING ELEVATION
 - STORM SEWER AND INLET
 - STORM SEWER AND MANHOLE
 - VIEW-OUT BASEMENT
 - WALK-OUT BASEMENT
 - STANDARD BASEMENT
 - POSSIBLE WALK-OUT BASEMENT
 - POSSIBLE VIEW-OUT

ADD 100 TO ELEVATIONS FOR CITY DATUM.
REVISED 02-08-06
REVISED 11-01-05

	No.	Revision	By	Date
	FONTANA ADDITION-PHASE 1			
	4-CORNER GRADING PLAN			
	(FOR INFORMATION ONLY)			
JAMES L. ARMOUR, P.E. - CITY ENGINEER CITY OF WICHITA PROJECT NO. 472-84086 Professional Engineering Consultants, P.A. 303 S. TOPEKA • WICHITA, KANSAS 67202 316-262-2691 • FAX 316-262-3003				
Designed by	BDB, BLB	Job No.	35-04485-000	Sheet 7 of 101
Drawn by	BJS	Date	September 2004	

Some 03-14-2006 11:35:34 AM by BJS
 Plot Scale 1:100 03-14-2006 11:47:25 AM by BJS
 C:\2004\104485\000\4CORNER_2.rvt

S.W. Cor. Sec. 31, Twp. 26S, R1W
Found Pipe w/ Sedgwick County
Cap in Concrete