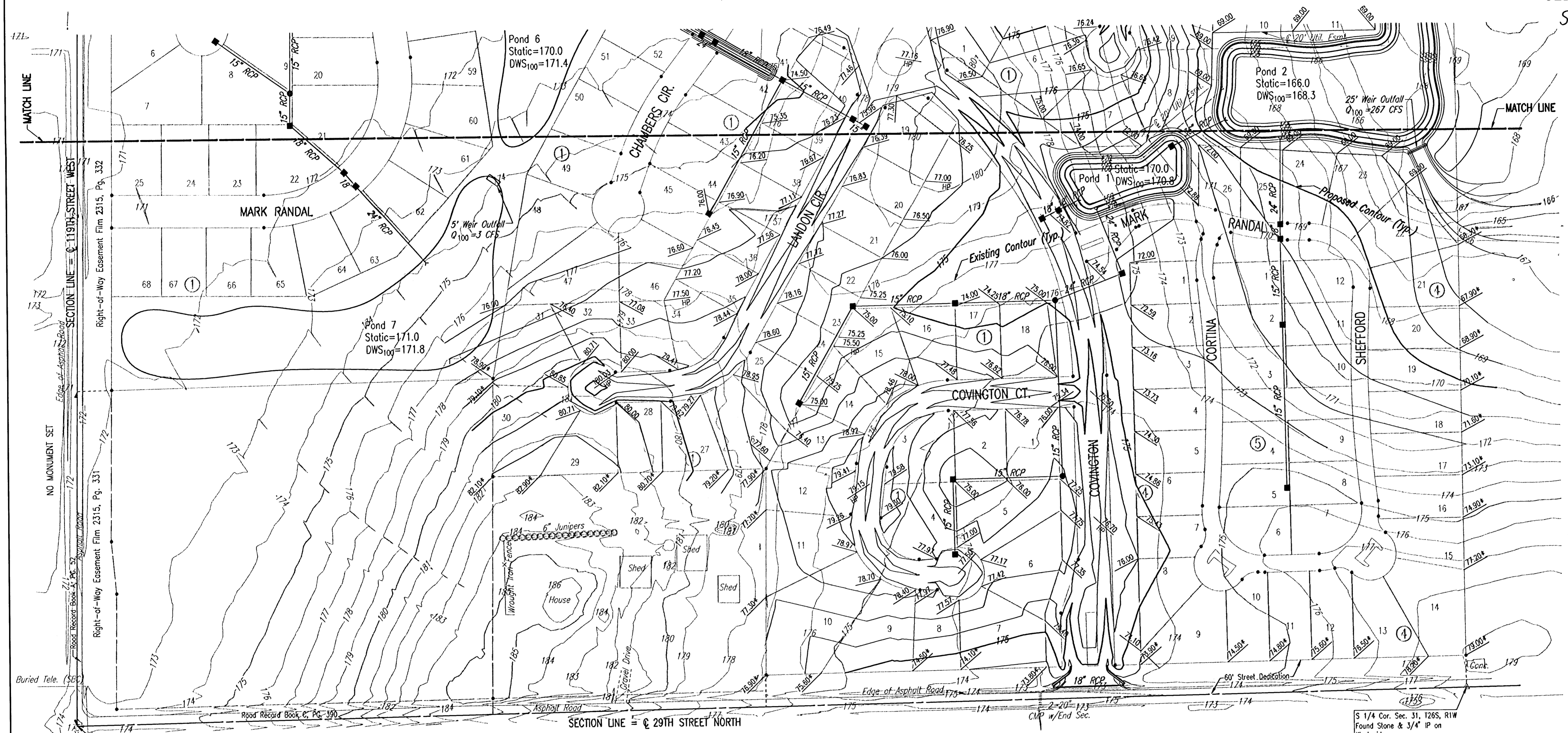


FONTANA

AN ADDITION TO WICHITA,
SEDGWICK COUNTY, KANSAS
SITE GRADING PLAN

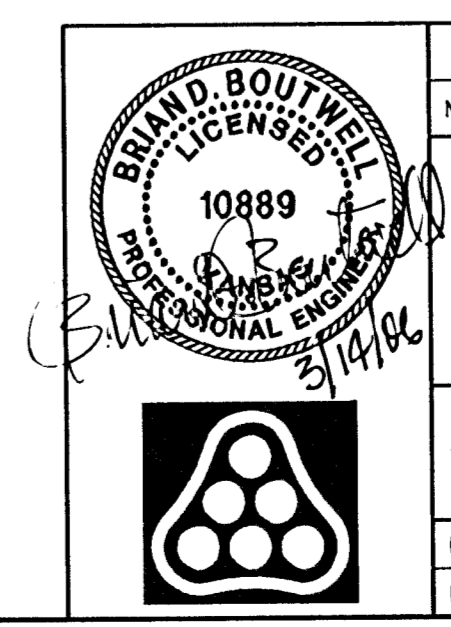


- LEGEND**
- SPOT ELEVATION
 - HIGH POINT ELEVATION
 - MATCH EXISTING ELEVATION
 - PROPOSED CONTOUR
 - EXISTING CONTOUR
 - CONTOUR INTERVAL: 1 FOOT

SITE GRADING NOTES

GRADING AS SHOWN ON THIS SHEET IS TO BE COMPLETED WITH CITY OF WICHITA PROJECT NO. 468-83883 (SWD NO. 236). PAVING CONTRACTOR SHALL BE RESPONSIBLE FOR FINAL SHAPING OF ROADBEDS AS NECESSARY.

SEE TYPICAL SECTION SHEET AND CROSS SECTIONS.



No.	Revision	By	Date
	FONTANA ADDITION-PHASE 1		
SITE GRADING PLAN (FOR INFORMATION ONLY)			
JAMES L. ARMOUR, P.E. - CITY ENGINEER CITY OF WICHITA PROJECT NO. 472-84086			
Professional Engineering Consultants, P.A. 303 S. TOPEKA • WICHITA, KANSAS 67202 316-262-2691 • FAX 316-262-3003			
Designed by	BDB, BLB	Job No.	35-04485-000
Drawn by	BJS	Date	September 2004
			Sheet 9 of 101

Saved: 03-15-2006 11:15:54 AM by BUS
 Plot Scale: 1/8"=1'-0" 03-15-2006 11:49:59 AM by BUS
 C:\WORK\CHANGES\W00\1010889.DWG

S.W. Cor. Sec. 31, Twp. 26S, R1W
 Found Pipe w/ Sedgwick County
 Cop in Concrete

S 1/4 Cor. Sec. 31, T26S, R1W
 Found Stone & 3/4" IP on
 West side