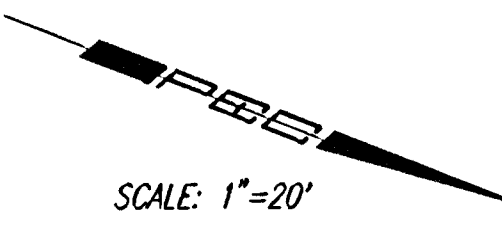
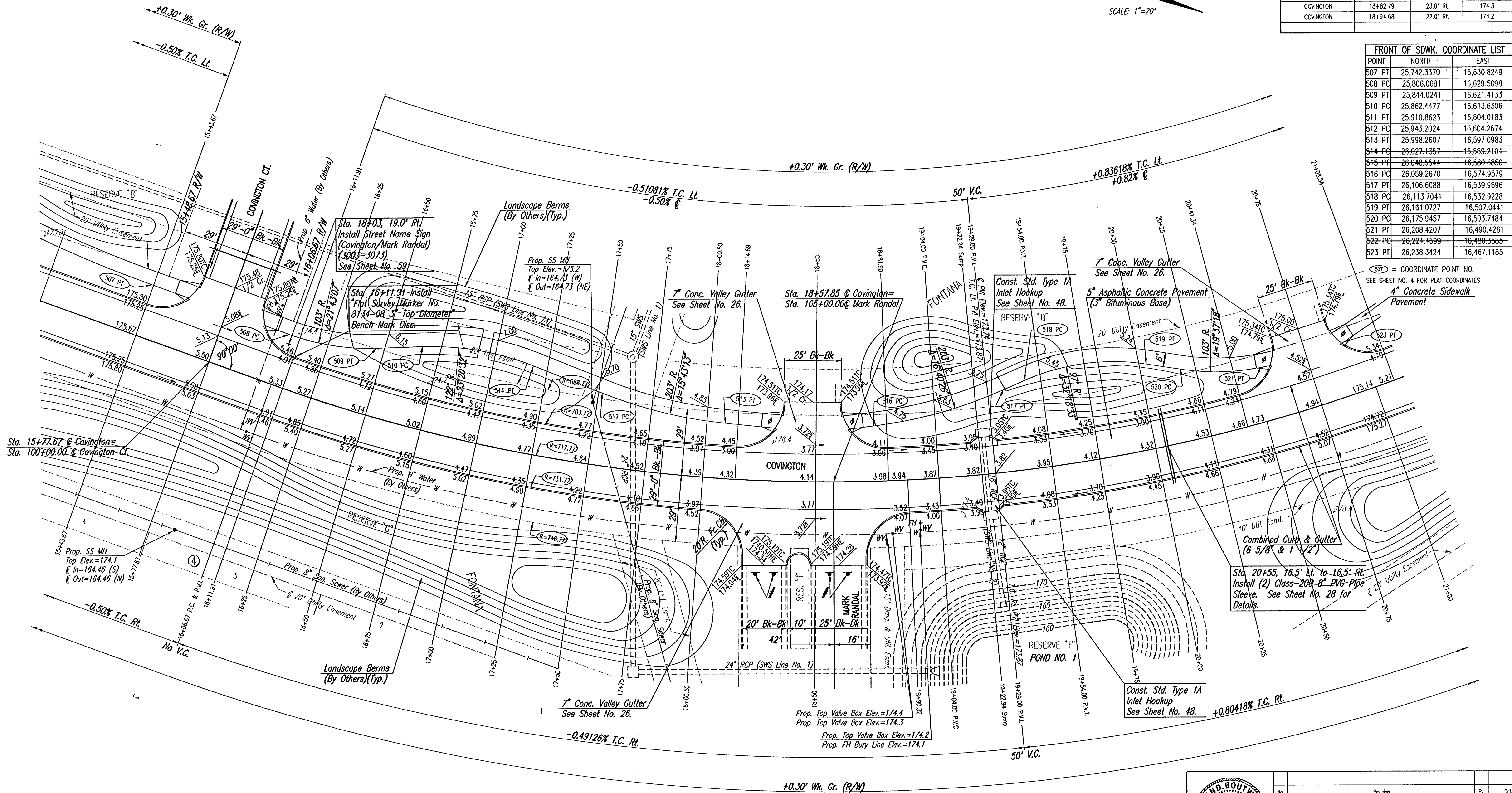


SEE NEXT SHEET FOR C CURVE DATA TABLE

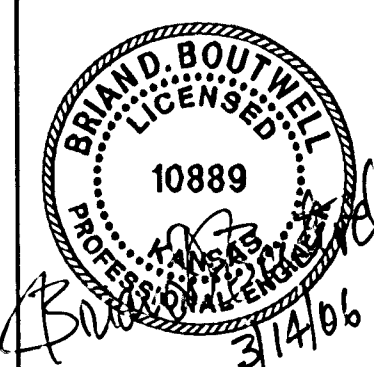


WATER VALVE BOX ELEVATIONS			
STREET	STATION	OFFSET	PROPOSED ELEVATION
COVINGTON	18+80.14	26.0' RL	174.4
COVINGTON	18+82.79	23.0' RL	174.3
COVINGTON	18+94.68	22.0' RL	174.2

FRONT OF SDWK. COORDINATE LIST		
POINT	NORTH	EAST
507 PT	25,742.3370	16,630.8249
508 PC	25,806.0681	16,629.5098
509 PT	25,844.0241	16,621.4133
510 PC	25,862.4477	16,613.6306
511 PT	25,910.8623	16,604.0183
512 PC	25,943.2024	16,604.2674
513 PT	25,998.2607	16,597.0983
514 PC	26,027.1357	16,589.2104
515 PT	26,048.5544	16,580.6850
516 PC	26,059.2670	16,574.9579
517 PT	26,106.6088	16,539.9696
518 PC	26,113.7041	16,532.9228
519 PT	26,161.0727	16,507.0441
520 PC	26,175.9457	16,503.7484
521 PT	26,208.4207	16,490.4261
522 PC	26,224.4699	16,480.3565
523 PT	26,238.3424	16,467.1185



507 = COORDINATE POINT NO.
SEE SHEET NO. 4 FOR PLAT COORDINATES



No.	Revision	By	Date
	Fontana Addition-Phase 1		

COVINGTON
STA. 16+11.91 TO STA. 21+00
JAMES L. ARMOUR, P.E. - CITY ENGINEER
CITY OF WICHITA PROJECT NO. 472-84086

Professional Engineering Consultants, P.A.
303 S. TOPEKA • WICHITA, KANSAS 67202
316-262-2691 • FAX 316-262-3003

Designed by	BDB, BLB	Job No.	35-04485-000	Sheet	13 of 101
Drawn by	BUS	Date	September 2004		

Install Type OMA-3 (End of Roadway Marker) at Stations 18+25, 18+33, 18+56, & 18+63.5 Rt. See Sheet No. 59.

Construct Std. Wheelchair Ramp

Saved: 05-14-2006 10:50:34 AM by BUS
 Project: 35-04485-000-12-2004 11:07:25 AM by JML
 C:\2004\CA485\000\STR16-21