

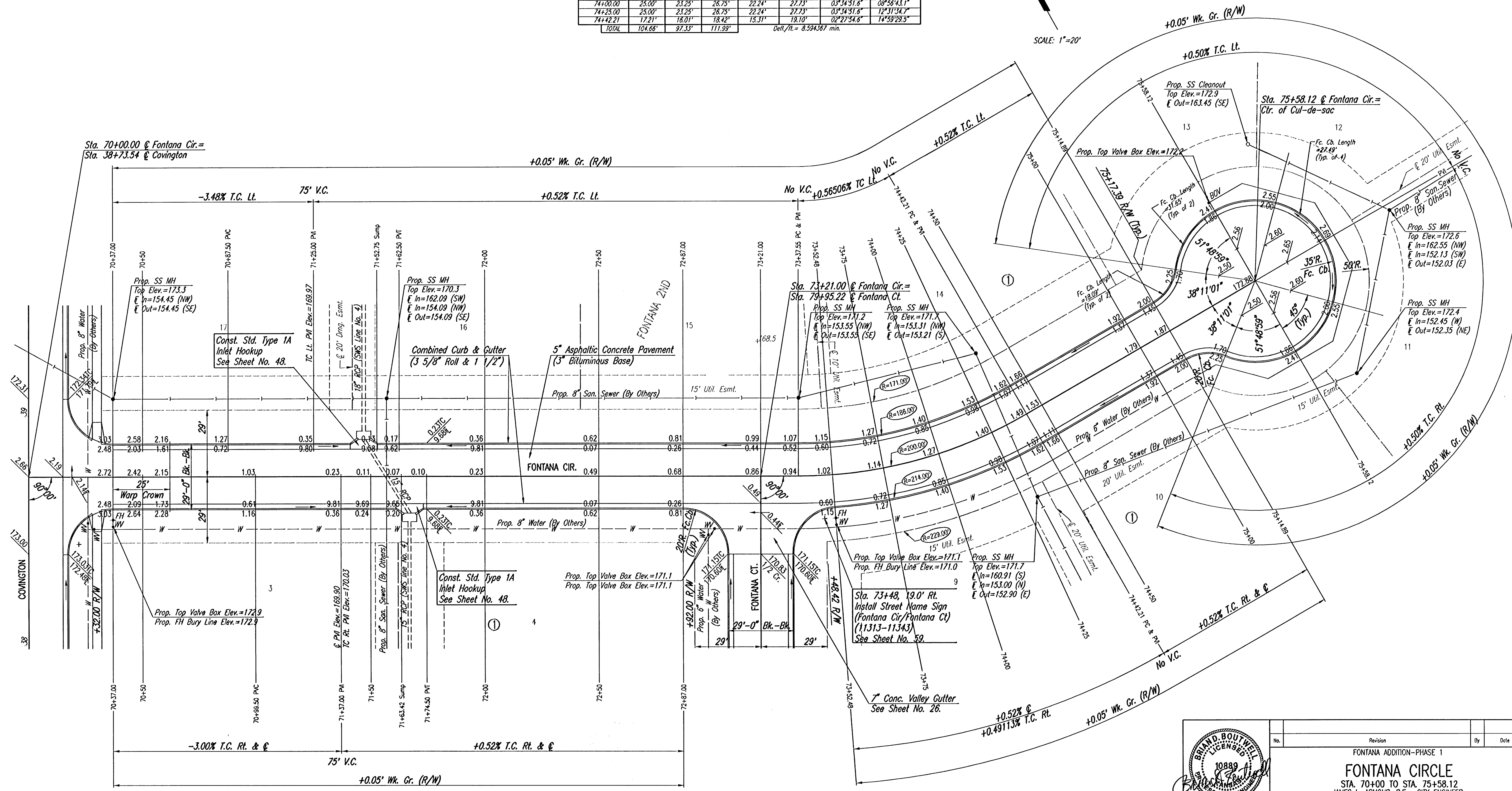
Q CURVE DATA
 $A=29^{\circ}58'59''$ $D=28^{\circ}38'52.4''$ $R=200.00'$ $L=104.66'$ $T=53.56'$ $E=7.05'$
 CURVE DATA BASED ON ϕ radius $d/2=14^{\circ}59'29.5''$

Q STATION	Q ARC LENGTH	FACE CURB LENGTH		CHORD LENGTH		DEFLECTION ANGLE	Q TOTAL DEFLECTION
		LEFT CURB	RIGHT CURB	8' OFF LEFT FACE CURB	8' OFF RIGHT FACE CURB		
73+37.55						0°00'00.0"	0°00'00.0"
73+50.00	12.45'	11.58'	13.32'	11.08'	13.82'	01°46'00.0"	01°46'00.0"
73+52.48	2.48'	2.31'	2.65'	2.21'	2.75'	00°21'18.8"	02°08'18.8"
73+75.00	22.52'	20.94'	24.10'	20.03'	24.98'	03°13'32.7"	03°21'51.6"
74+00.00	25.00'	23.25'	26.75'	22.24'	27.73'	03°34'51.6"	03°58'43.1"
74+25.00	25.00'	23.25'	26.75'	22.24'	27.73'	03°34'51.6"	12°31'34.7"
74+42.21	17.21'	16.01'	18.42'	15.31'	19.10'	02°27'34.6"	14°59'29.5"
TOTAL	104.66'	97.33'	111.99'				

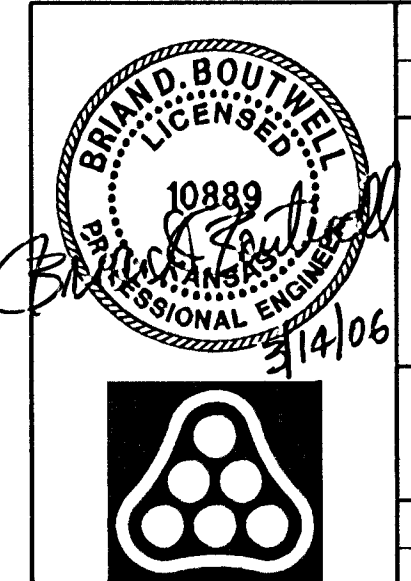
Defl./ft. = 8.594367 min.

WATER VALVE BOX ELEVATIONS

STREET	STATION	OFFSET	PROPOSED ELEVATION
FONTANA	70+37.00	22.0' RL	172.9
FONTANA	72+98.00	25.65' RL	171.1
FONTANA	73+00.65	23.0' RL	171.1
FONTANA	73+52.48	22.0' RL	171.1
FONTANA	75+59.13	39.72' LL	172.2



NOTE: THIS STREET TO BE CONSTRUCTED WITH ROLL-TYPE CURB. TOP OF CURB ELEVATIONS GIVEN ARE FOR FULL HEIGHT CURB.



No.	Revision	By	Date
	FONTANA ADDITION-PHASE 1		
FONTANA CIRCLE			
STA. 70+00 TO STA. 75+58.12			
JAMES L. ARMOUR, P.E. - CITY ENGINEER			
CITY OF WICHITA PROJECT NO. 472-84086			
Professional Engineering Consultants, P.A.			
303 S. TOPEKA - WICHITA, KANSAS 67202			
316-262-2691 • FAX 316-262-3003			
Designed by	BDB, BLB	Job No.	35-04485-000
Drawn by	BJS	Date	September 2004
			Sheet 22 of 101

Saved 03-13-2006 4:25:32 PM by BJS
 Plot Scale 1:20 03-14-2006 9:27:07 AM by JMU
 C:\2004\04485\0001\STR70-76