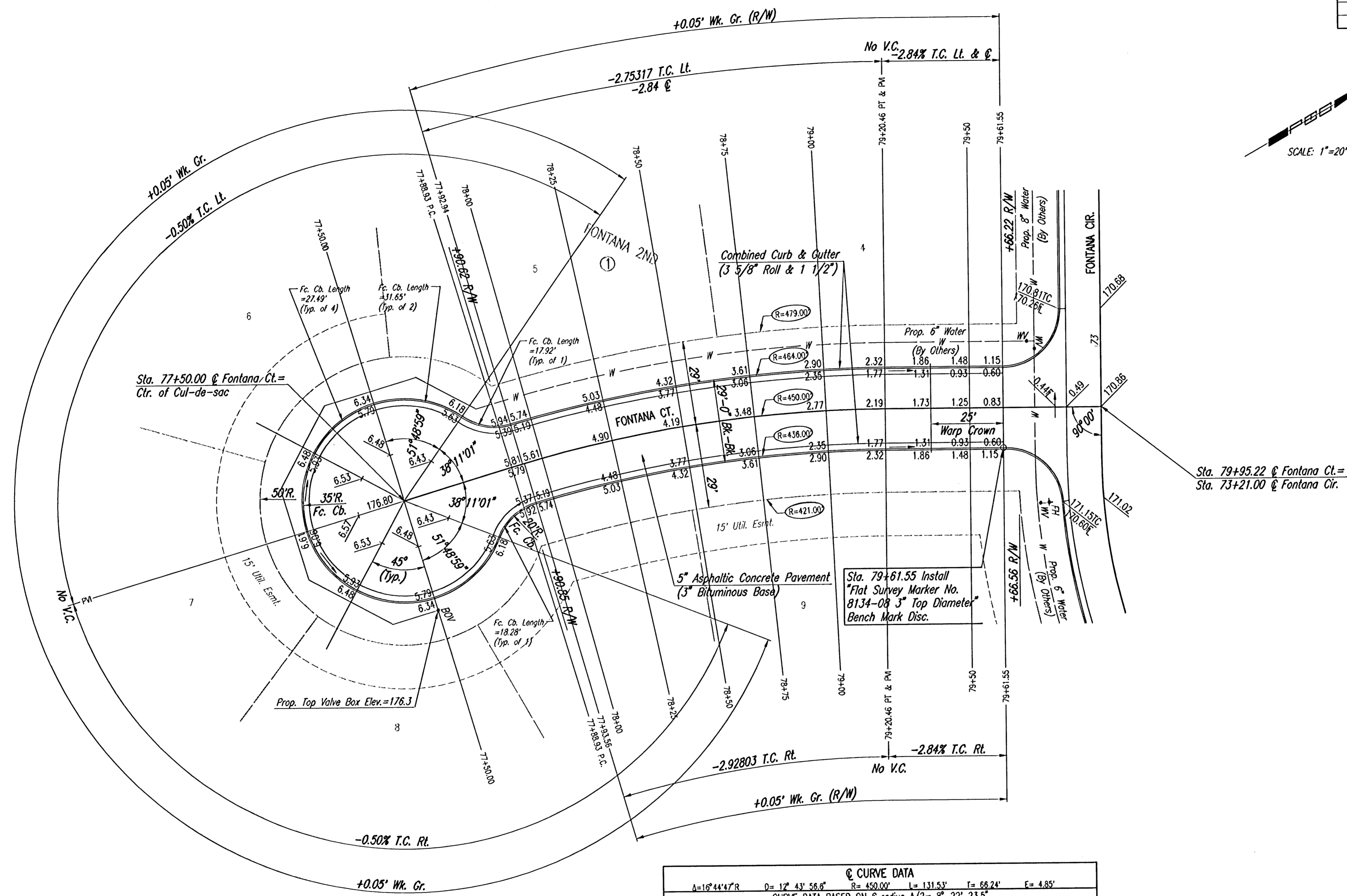
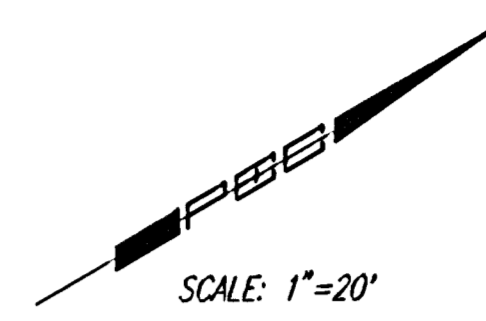


WATER VALVE BOX ELEVATIONS			
STREET	STATION	OFFSET	PROPOSED ELEVATION
FONTANA CT.	77+50.00	39.73' RL	176.3

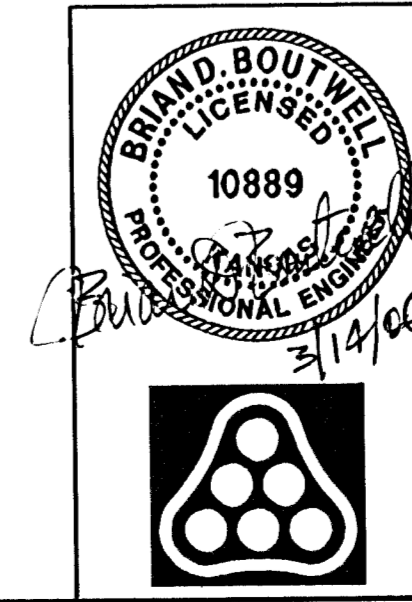


Q CURVE DATA
 $\Delta=16^{\circ}44'47''$ $D=12' 43' 56.6''$ $R=450.00'$ $L=131.53'$ $T=66.24'$ $E=4.85'$
 CURVE DATA BASED ON Q radius $\Delta/2=8^{\circ} 22' 23.5''$

Q STATION	Q ARC LENGTH	FACE CURB LENGTH		CHORD LENGTH		DEFLECTION ANGLE	Q TOTAL DEFLECTION
		LEFT CURB	RIGHT CURB	8' OFF LEFT FACE CURB	8' OFF RIGHT FACE CURB		
77+38.33						0°00'00.0"	0°00'00.0"
77+33.34	4.01'	4.13'	3.89'	4.21'	3.81'	0°15'19.0"	0°15'19.0"
77+33.56	0.62'	0.64'	0.60'	0.65'	0.59'	0°02'22.1"	0°17'41.1"
78+00.00	6.44'	6.64'	6.24'	6.75'	6.13'	0°24'35.9"	0°42'17.1"
78+25.00	25.00'	25.78'	24.22'	26.22'	23.77'	01°35'29.6"	0°17'46.6"
78+50.00	25.00'	25.78'	24.22'	26.22'	23.77'	01°35'29.6"	0°53'16.2"
78+75.00	25.00'	25.78'	24.22'	26.22'	23.77'	01°35'29.6"	0°28'45.8"
79+00.00	25.00'	25.78'	24.22'	26.22'	23.77'	01°35'29.6"	0°04'15.4"
79+20.46	20.46'	21.09'	19.82'	21.45'	19.45'	01°18'09.1"	0°22'23.5"
TOTAL	131.53'	135.62'	127.43'				

Def./ft. = 3.819719 min.

NOTE: THIS STREET TO BE CONSTRUCTED WITH ROLL-TYPE CURB. TOP OF CURB ELEVATIONS GIVEN ARE FOR FULL HEIGHT CURB.



No.	Revision	By	Date
FONTANA ADDITION-PHASE 1			
FONTANA COURT			
STA. 77+50.00 TO STA. 79+95.22			
JAMES L. ARMOUR, P.E. - CITY ENGINEER			
CITY OF WICHITA PROJECT NO. 472-84086			
Professional Engineering Consultants, P.A.			
303 S. TOPEKA • WICHITA, KANSAS 67202			
316-262-2691 • FAX 316-262-3003			
Designed by	BDB, BLB	Job No.	35-04485-000
Drawn by	BJS	Date	September 2004

Saved 03-14-2006 9:33:42 AM by JML
 Plotted 03-14-2006 9:35:36 AM by JML
 C:\2004\104485\1001\57072.dwg