

DATE: \_\_\_\_\_ BY: \_\_\_\_\_  
 CHECKED: \_\_\_\_\_  
 PLAN

Sta. 38+57.3 SWS Line No. 4  
 Begin 18" RCP Construction  
 Install 167.4 L.F. 18" RCP (SW)  
 (Including End Section)

POND #3  
 Static Pool=166.0  
 DWS<sub>100</sub>=168.5  
 RESERVE "f"

Install 31 S.Y.  
 Light Stone Riprap  
 See Sheet No. 52.

Sta. 40+24.7 SWS Line No. 4=  
 @ Fontana Cir. Sta. 71+47.00, 17.67' Lt.  
 Const. Std. Type 1A Curb Inlet  
 L=5'-0", W=3'-0"  
 Top Elev.=170.15  
 Install 40.6 L.F. 15" RCP (S)  
 See Sheet No. 48.

Install 36 L.F.  
 Excavatable Flowable  
 Fill to Elev. 166.8

Sta. 40+65.3 SWS Line No. 4=  
 @ Fontana Cir. Sta. 71+67.00, 17.67' Rt.  
 Const. Std. Type 1A Curb Inlet  
 L=5'-0", W=3'-0"  
 Top Elev.=170.20  
 Install 186.3 L.F. 15" RCP (SW)  
 See Sheet No. 48.

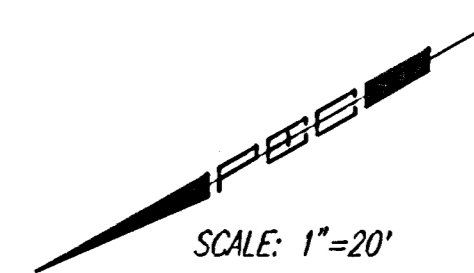
Sta. 42+51.6 SWS Line No. 4  
 Const. Std. Area Inlet  
 L=5'-4", W=3'-10"  
 Top Elev.=172.90  
 See Sheet No. 49.

Prop. SS MH  
 Top Elev.=171.3  
 In=162.09 (SW)  
 In=154.09 (NW)  
 Out=154.09 (SE)

CAUTION !!!  
 Proposed 8" San. Sewer  
 City of Wichita

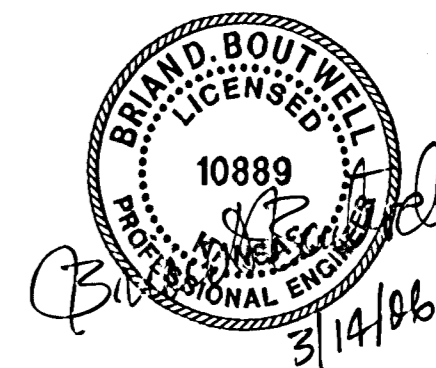
CAUTION !!!  
 Proposed 8" Water  
 City of Wichita

CAUTION !!!  
 Proposed 8" San. Sewer  
 City of Wichita

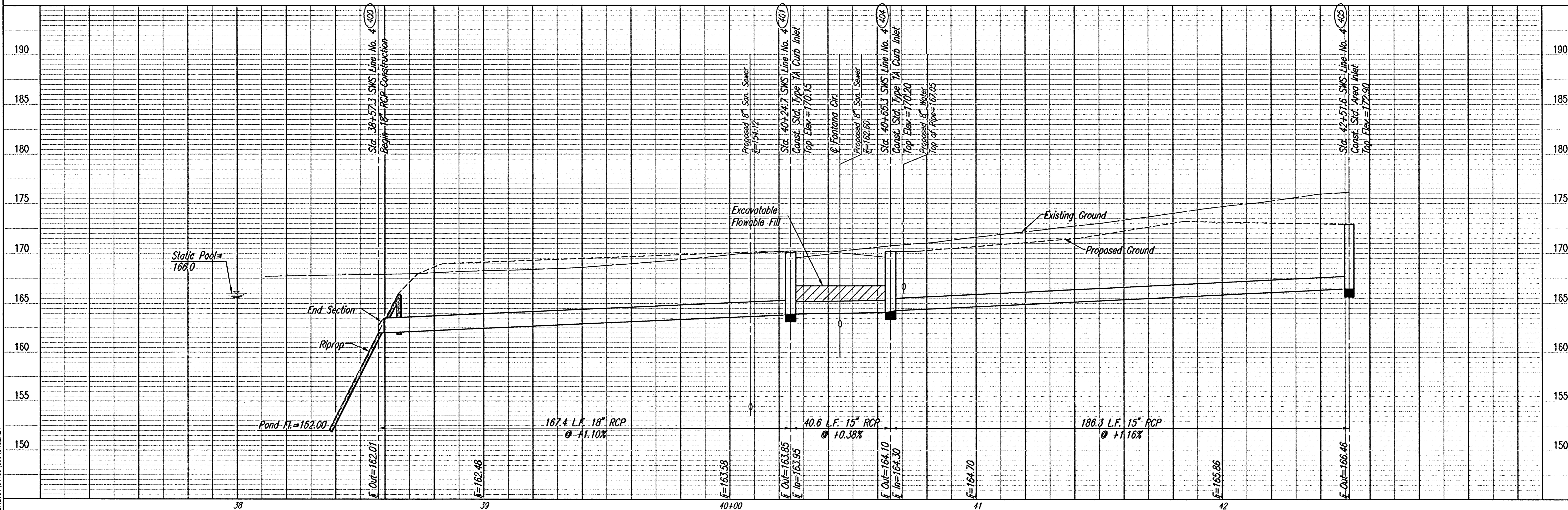


COORDINATE LIST		
POINT	NORTH	EAST
400	26,894.9633	16,725.2471
401	26,749.1217	16,643.0705
402	26,747.8149	16,642.3341
403	26,709.8218	16,643.8828
404	26,708.5150	16,643.1465
405	26,546.1811	16,551.6773

400 = COORDINATE POINT NO.  
 SEE SHEET NO. 3 FOR PLAT COORDINATES



DATE: \_\_\_\_\_ BY: \_\_\_\_\_  
 CHECKED: \_\_\_\_\_  
 PROFILE



FONTANA ADDITION-PHASE 1  
**SWS LINE NO. 4**

JAMES L. ARMOUR, P.E. - CITY ENGINEER  
 CITY OF WICHITA, PROJECT NO. 472-94086

Professional Engineering Consultants, P.A.  
 303 S. TOPEKA • WICHITA, KANSAS 67202  
 316-262-2891 • FAX 316-262-3003

Designed By: BLB, BOB  
 Drawn By: BUS  
 Job No.: 35-04485-000  
 Date: SEPTEMBER 2004

Scale 0.5"=1'-0" (Profile) 1"=20' (Plan)  
 Date: 09/14/04 By: JLA  
 Checked: 09/14/04 By: JLA  
 Drawn: 09/14/04 By: JLA