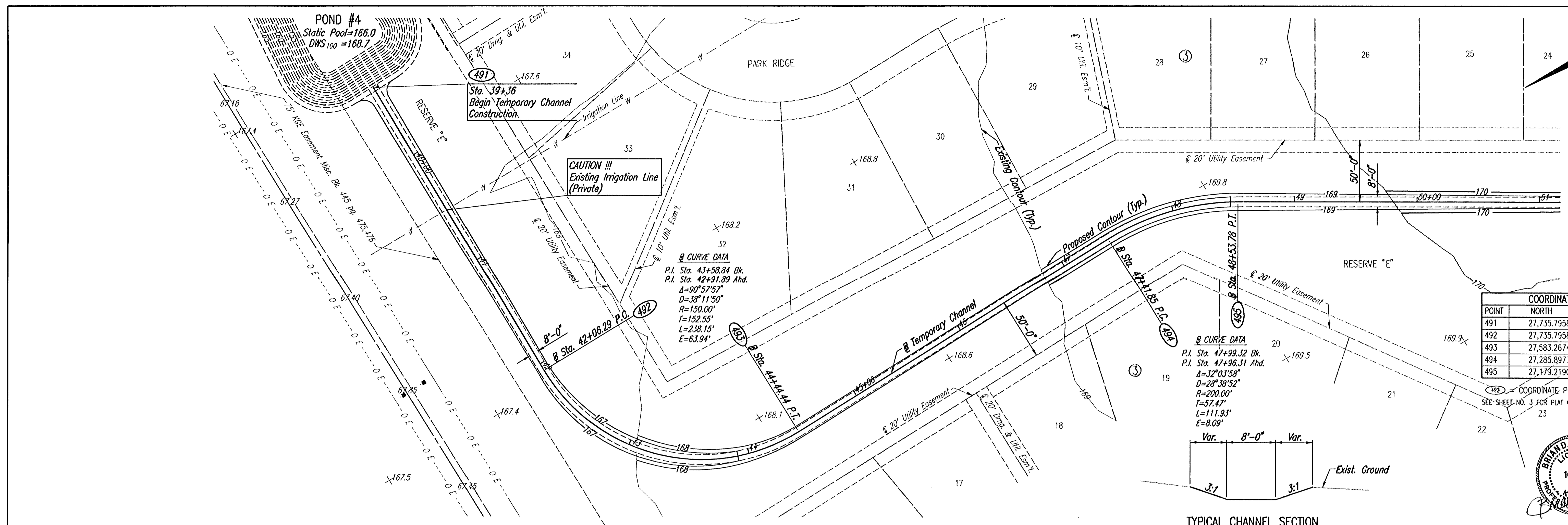


PLAN
 CHECKED
 CHECKED
 BY
 DATE

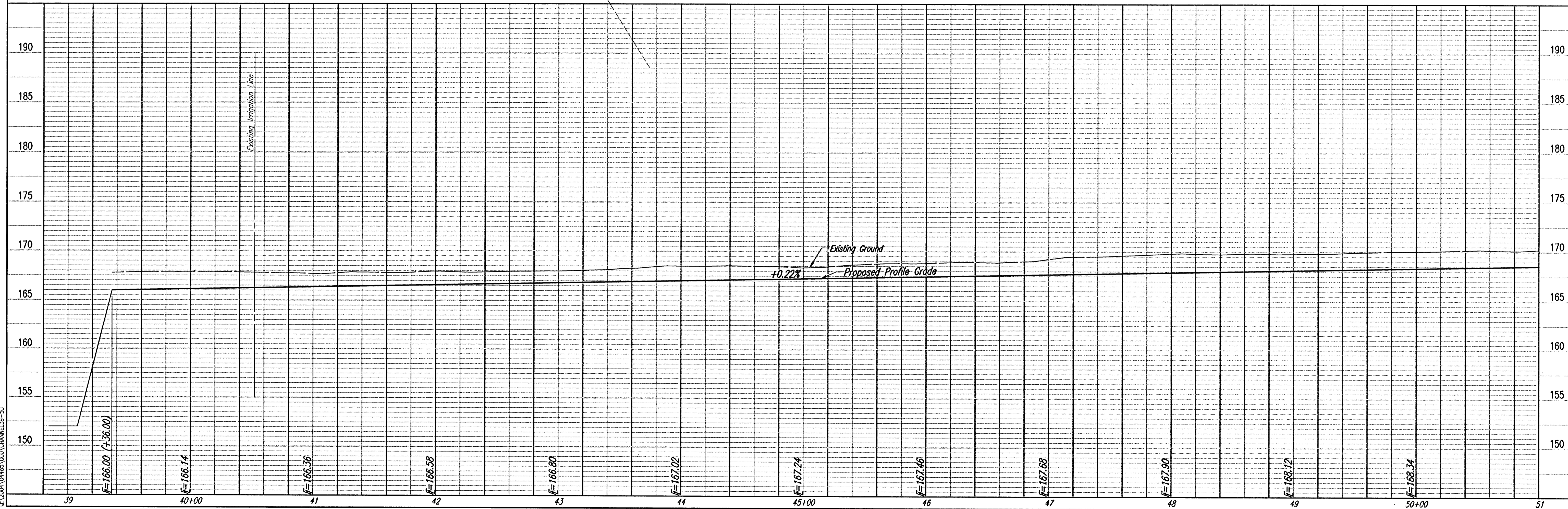
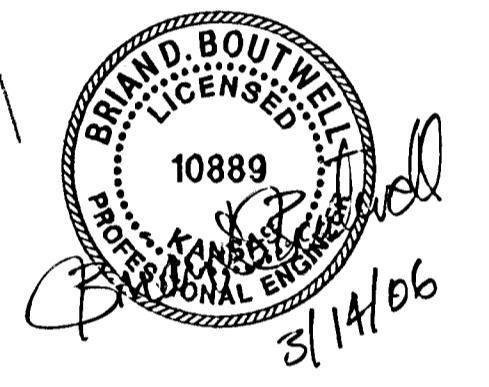
PROFILE
 CHECKED
 CHECKED
 BY
 DATE

Drawn By: BLS, BDB
 Date: SEPTEMBER 2004
 Job No.: 35-04465-000
 303 S. TOPEKA, WICHITA, KANSAS 67202
 316-262-2691 • FAX 316-262-3003
 Professional Engineering Consultants, P.A.
 FONTANA ADDITION-PHASE 1



COORDINATE LIST		
POINT	NORTH	EAST
491	27,735.7958	16,170.1458
492	27,735.7958	15,899.8567
493	27,583.2674	15,749.8780
494	27,285.8977	15,754.8911
495	27,179.2190	15,726.1724

COORDINATE POINT NO.
 SEE SHEET NO. 3 FOR PLAT COORDINATES



Fontana Addition-Phase 1
TEMPORARY CHANNEL
 Professional Engineering Consultants, P.A.
 303 S. TOPEKA, WICHITA, KANSAS 67202
 316-262-2691 • FAX 316-262-3003
 Designed By: BLS, BDB
 Drawn By: BLS
 Job No.: 35-04465-000
 Date: SEPTEMBER 2004