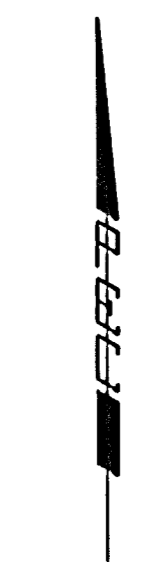


FONTANA

AN ADDITION TO WICHITA,
SEDGWICK COUNTY, KANSAS



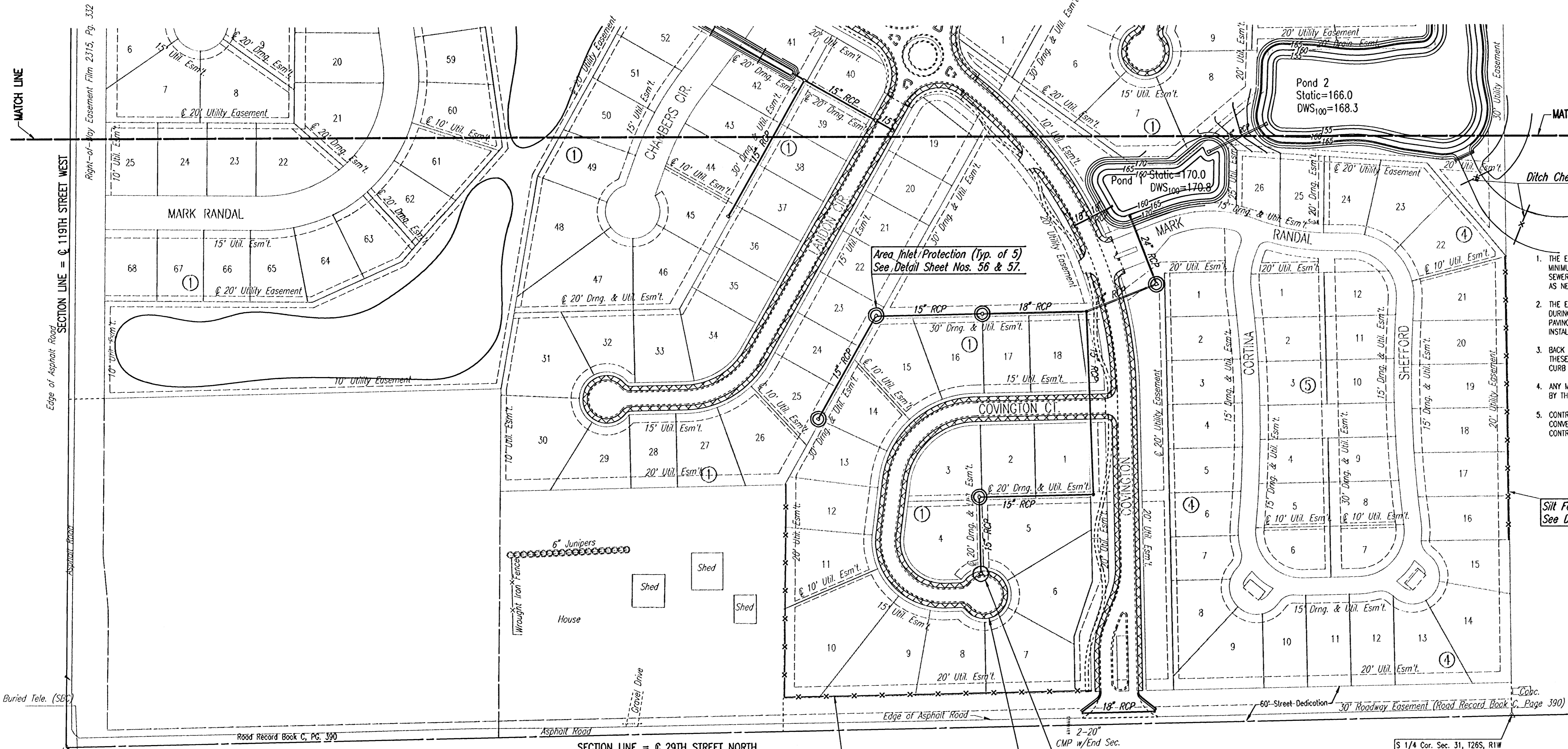
SCALE: 1"=100'

GENERAL NOTES

1. THE EROSION CONTROL DEVICES SHOWN ON THIS SHEET ARE CONSIDERED MINIMUM STANDARDS. WHENEVER SEDIMENT ENTERS THE STREETS, STORM SEWERS, DITCHES, OR PONDS, CONTRACTOR WILL INSTALL ADDITIONAL DEVICES, AS NEEDED, TO CORRECT THE PROBLEM.
2. THE EROSION CONTROL DEVICES SHOWN HEREON MUST BE IN PLACE AT ALL TIMES DURING CONSTRUCTION UNTIL SUCH TIME AS THE SITE IS REESTABLISHED WITH PAVING OR GRASS. TEMPORARY OR PERMANENT SEED AND MULCH WILL BE INSTALLED WHEN EARTHWORK ACTIVITIES CEASE IN AN AREA FOR 14 DAYS OR MORE.
3. BACK OF CURB PROTECTION: AS SHOWN ON CITY STANDARD DETAILS. THESE DEVICES MUST REMAIN IN PLACE UNTIL THE AREA BETWEEN THE CURB AND RIGHT-OF-WAY LINE HAS BEEN PERMANENTLY STABILIZED.
4. ANY MUD INADVERTENTLY TRACKED ONTO ANY STREET WILL BE CLEANED UP BY THE CONTRACTOR, AT THE END OF EACH DAY'S WORK.
5. CONTRACTOR TO FURNISH A TRUCK WASH-OUT PIT TO BE PLACED AT A CONVENIENT LOCATION THAT DOES NOT CONFLICT WITH CONSTRUCTION. CONTRACTOR SHALL CLEAN OUT AND BACKFILL PIT PRIOR TO FINAL INSPECTION.

LEGEND

- x— Silt Fence Barrier/Ditch Checks
- ⊙ Area Inlet Protection
- Curb Inlet Protection
- ⊠ Back of Curb Protection



MATCH LINE

MATCH LINE

SECTION LINE = § 119TH STREET WEST

SECTION LINE = § 29TH STREET NORTH

Edge of Asphalt Road

60' Street Dedication 30' Roadway Easement (Road Record Book C, Page 390)

2-20" CMP w/End Sec.

S 1/4 Cor. Sec. 31, T26S, R1W
Found Stone & 3/4" IP on West side

S.W. Cor. Sec. 31, Twp. 26S, R1W
Found Pipe w/ Sedgwick County
Cap in Concrete

Silt Fence Barrier
See Detail Sheet No. 56.

Back of Curb Protection
See Detail Sheet No. 55.

Curb Inlet Protection (Typ. of 1)
See Detail Sheet No. 58.

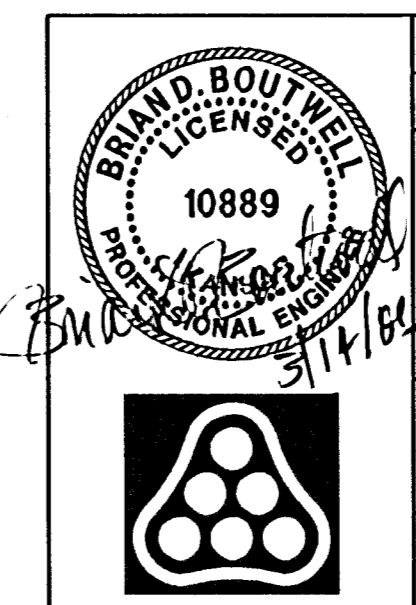
Silt Fence Barrier
See Detail Sheet No. 56.

Area Inlet Protection (Typ. of 5)
See Detail Sheet Nos. 56 & 57.

Pond 2
Static=166.0
DWS₁₀₀=168.3

Pond 1
Static=170.0
DWS₁₀₀=170.8

Sheet 11-09-2005 9:16:40 AM by BJS
 Plot Scale 1:100 03-14-2006 9:11:06 AM by BJS
 C:\2004\104485\000\EROSIONCONTROL_2



No.	Revision	By	Date
FONTANA ADDITION-PHASE 1			
EROSION CONTROL (BMP) PLAN			
JAMES L. ARMOUR, P.E. - CITY ENGINEER CITY OF WICHITA PROJECT NO. 472-84086			
Professional Engineering Consultants, P.A. 303 S. TOPEKA • WICHITA, KANSAS 67202 316-262-2691 • FAX 316-262-3003			
Designed by	BDB, BLB	Job No.	35-04485-000
Drawn by	BJS	Date	September 2004
			Sheet 54 of 101