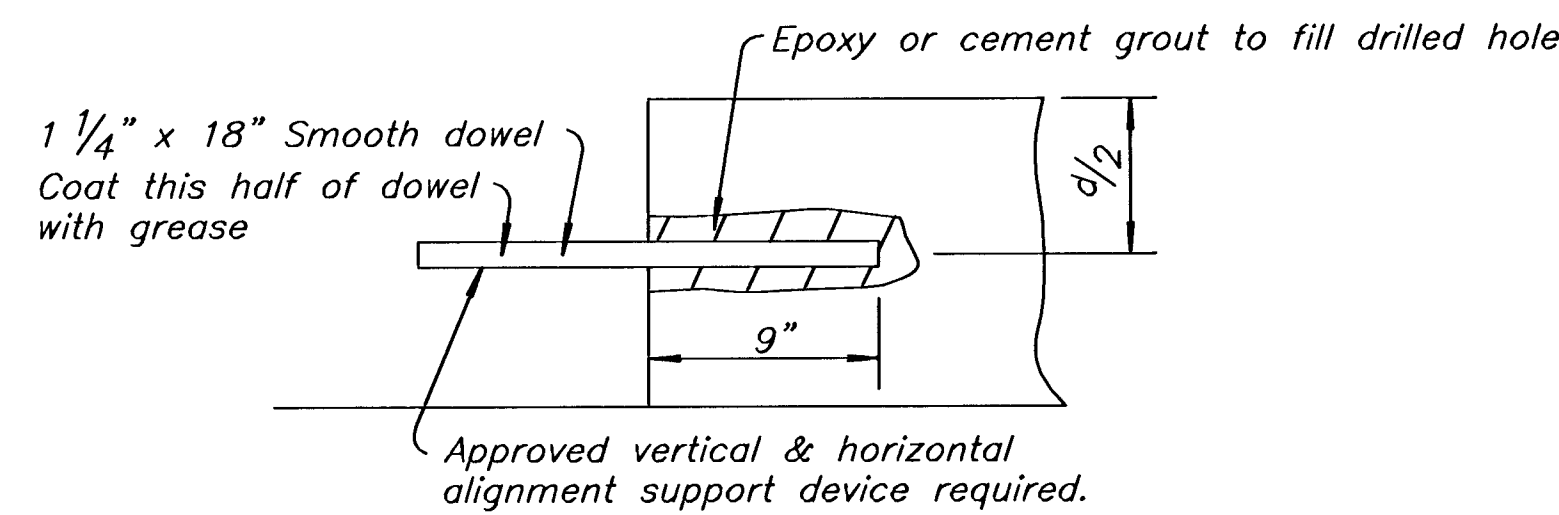


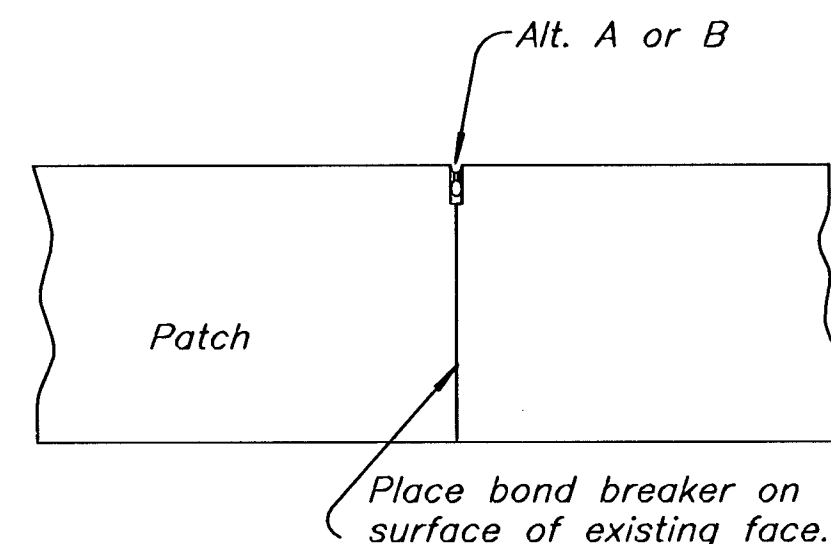
PANEL REPLACEMENT PLAN

- ① - Butt type joint with smooth dowel bars, use bond breaker.
- ② - Butt type joint, use bond breaker.
- ④ - Tied type joint

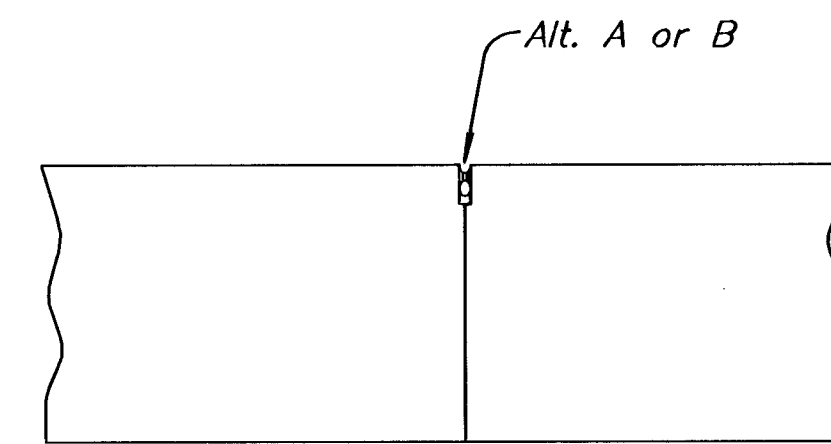
See Alternate Slab Replacement note on this sheet when L>15'.



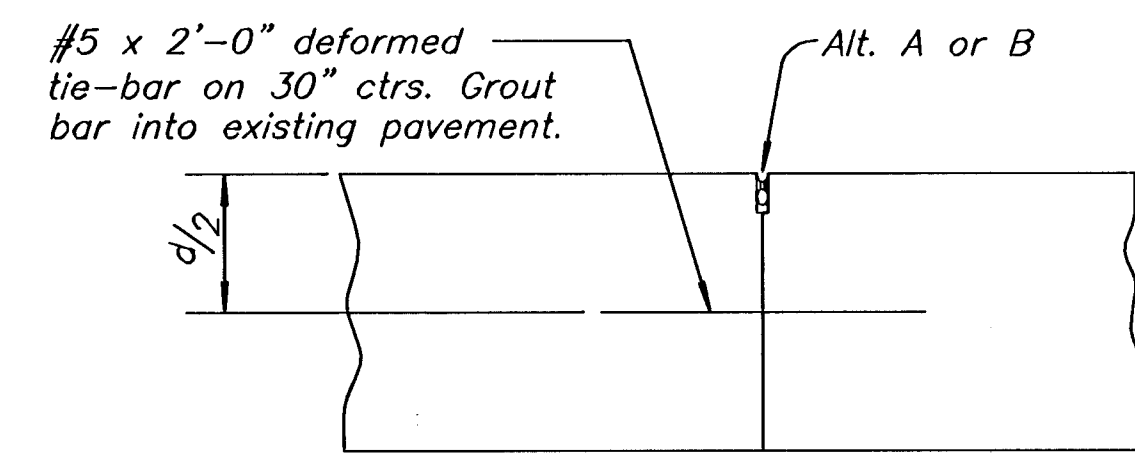
TYPE ① - DETAIL



TYPE ② - CENTERLINE JOINT



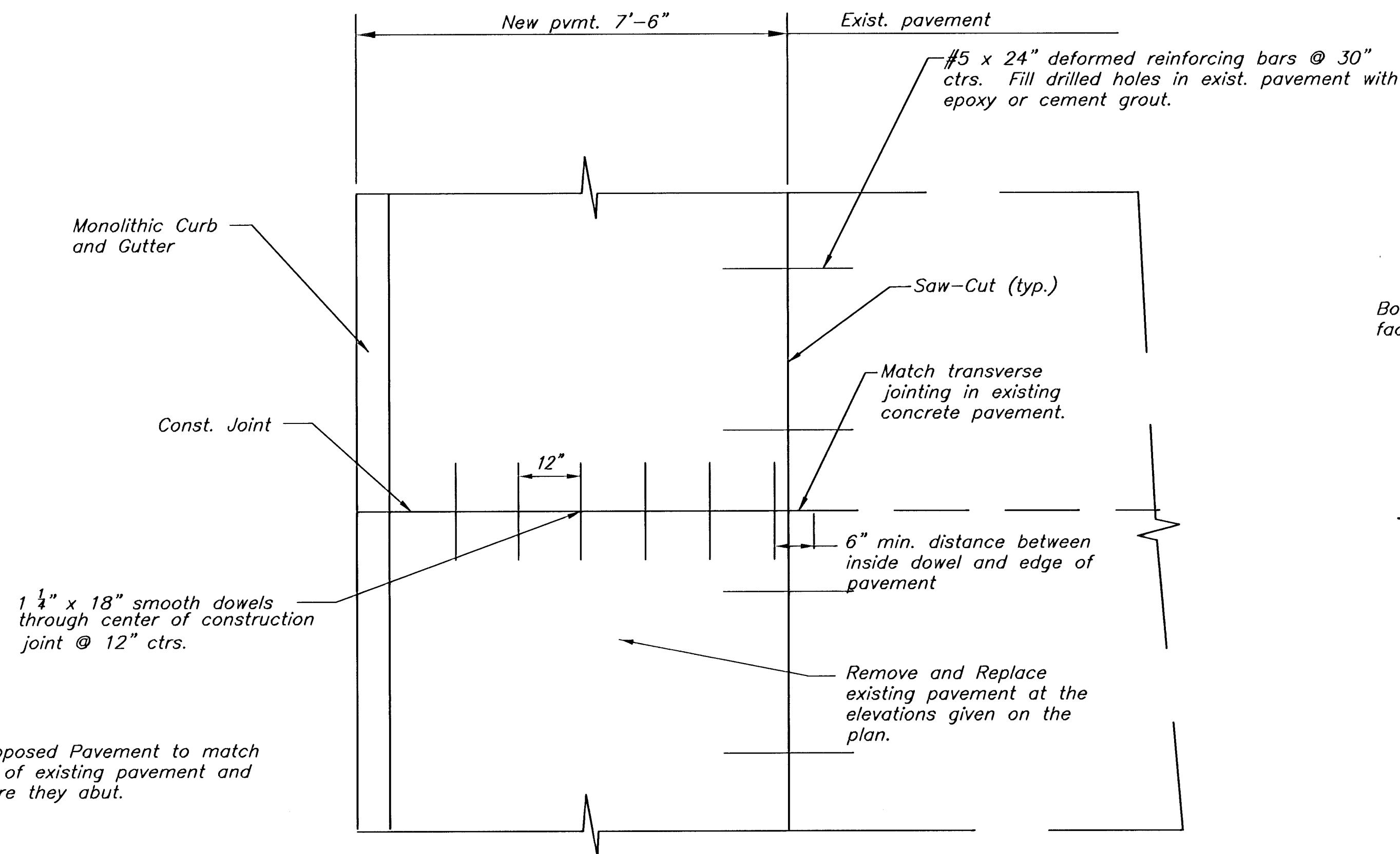
TYPE ③ - CENTERLINE JOINT (FULL WIDTH PATCH) (TWO LANES POURED SEPERATELY)



TYPE ④ - CENTERLINE JOINT (FULL WIDTH PATCH)

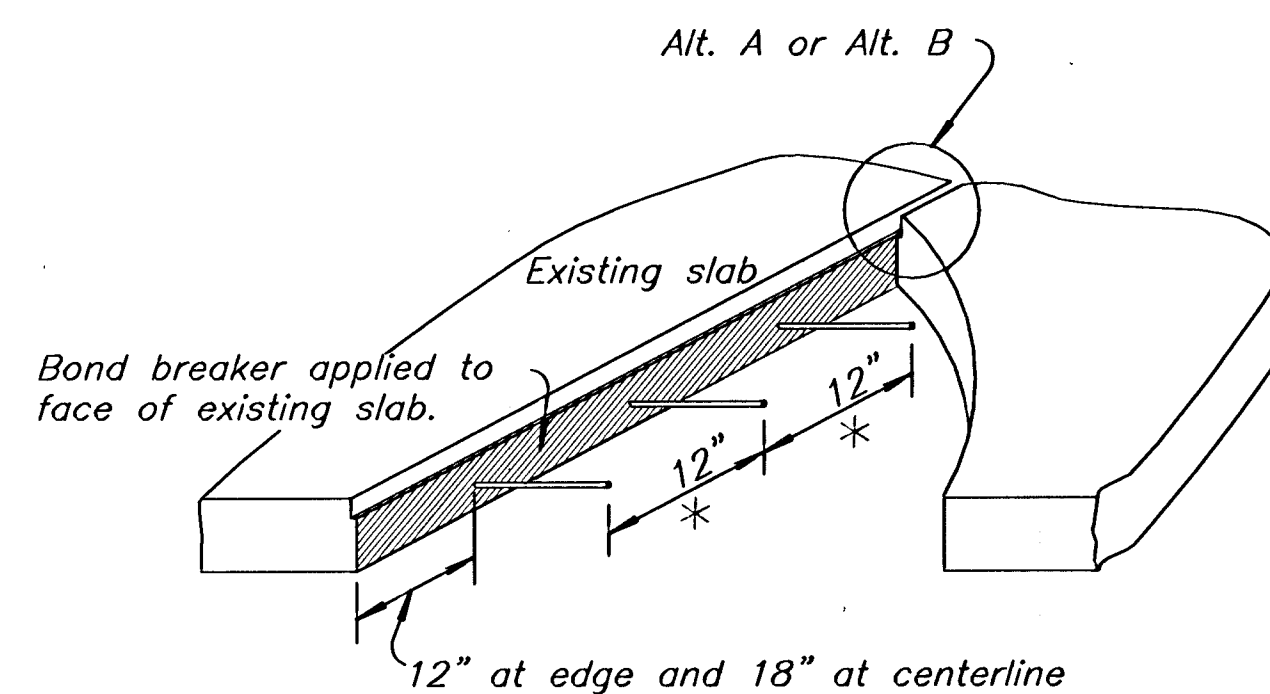
- JOINT REPAIR PLAN**
- ① - Butt type joint with smooth dowel bars, use bond breaker.
 - ② - Butt type joint, use bond breaker.
 - ③ - Butt type joint (lanes poured seperately)

Note: When practical it should be a general practice to construct slabs the same length as those being repaired. A patch must be at least 6' in length. It can be as long as 15'. If a continuous repair exceeds 15' then the repair should be divided into as many slabs as possible with lengths less than 15'.



CONCRETE PAVEMENT AND GUTTER REPLACEMENT DETAIL

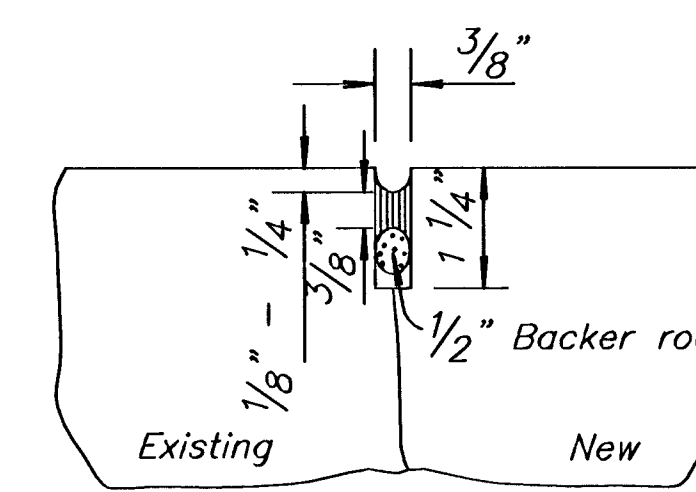
(Sta. 45+77.53 to Sta. 46+65.79)



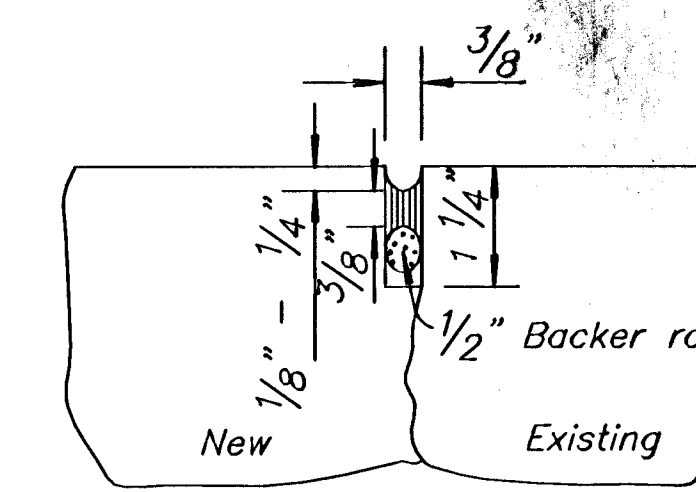
TYPE ① - CONTRACTION JOINT

* Install smooth dowels completely across section. 1 1/4 x 18" See Type ① - Detail.

NOTE: SAW CUTTING REQUIRED FOR PANEL REPLACEMENT, JOINT REPAIR, PAVEMENT AND GUTTER REPLACEMENT IS SUBSIDIARY TO THESE WORK ITEMS.



ALT. A - SAWED



ALT. B - FORMED

MKEC ENGINEERING CONSULTANTS
 411 N. WEBB ROAD
 WICHITA, KS. 67206
 316 - 684 - 9600

McCORMICK AVENUE STREET IMPROVEMENTS
 PROJECT NAME

PAVEMENT REPAIR DETAILS
 SHEET TITLE

JRA DESIGN BY. | WNW DRAWN BY. | JRA CHECKED BY.
 AUGUST 2005 DATE | 03245 JOB NO. | 23/ 111 SHEET/OF