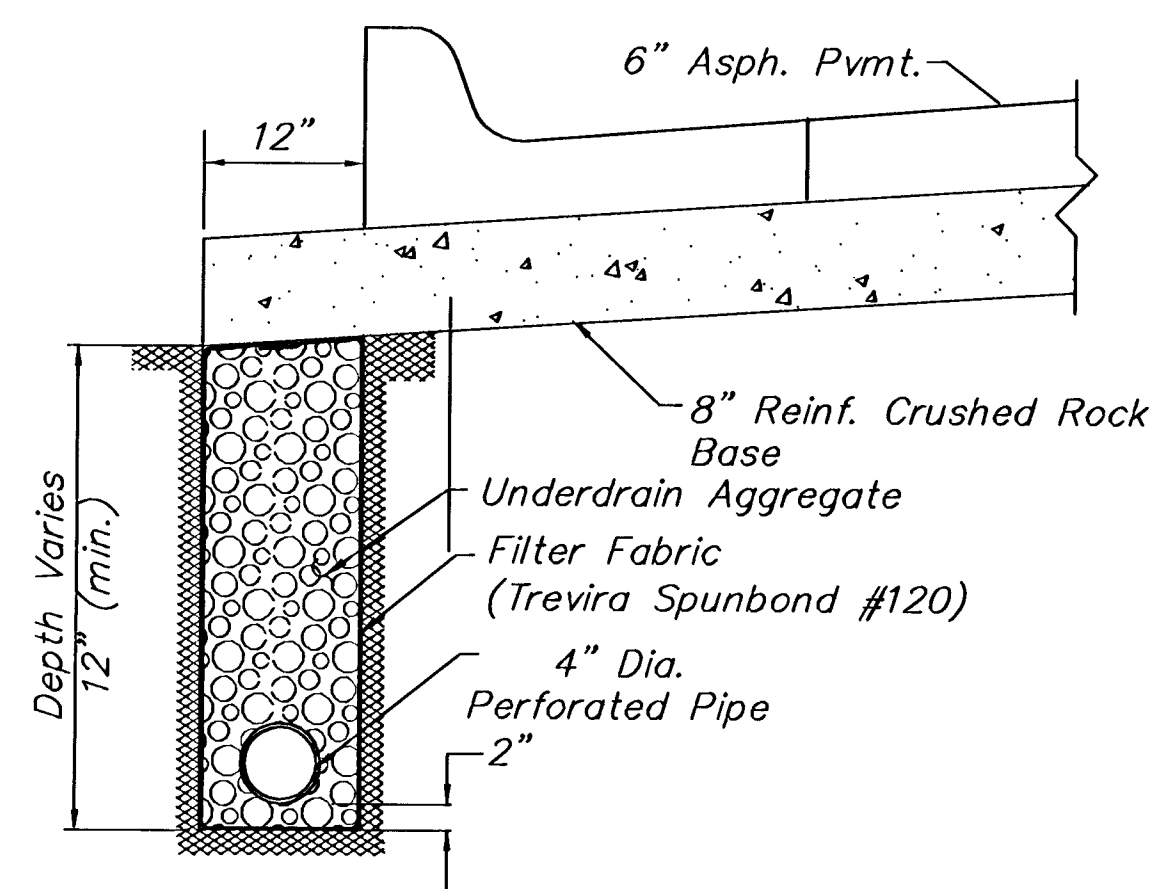


PAVEMENT UNDERDRAIN PLAN
AT BACK OF CURB
NO SCALE



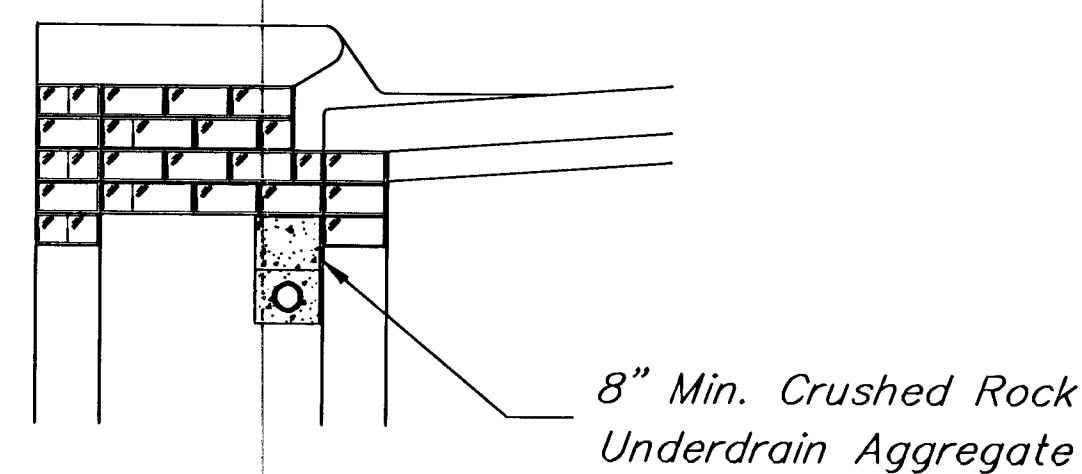
PAVEMENT UNDERDRAIN SECTION A-A
AT BACK OF CURB
NO SCALE

UNDERDRAIN AGGREGATE

Percent Of Aggregate Retained	
1"	0
3/4"	20-60
3/8"	45-80
#4	90-100
#8	95-100

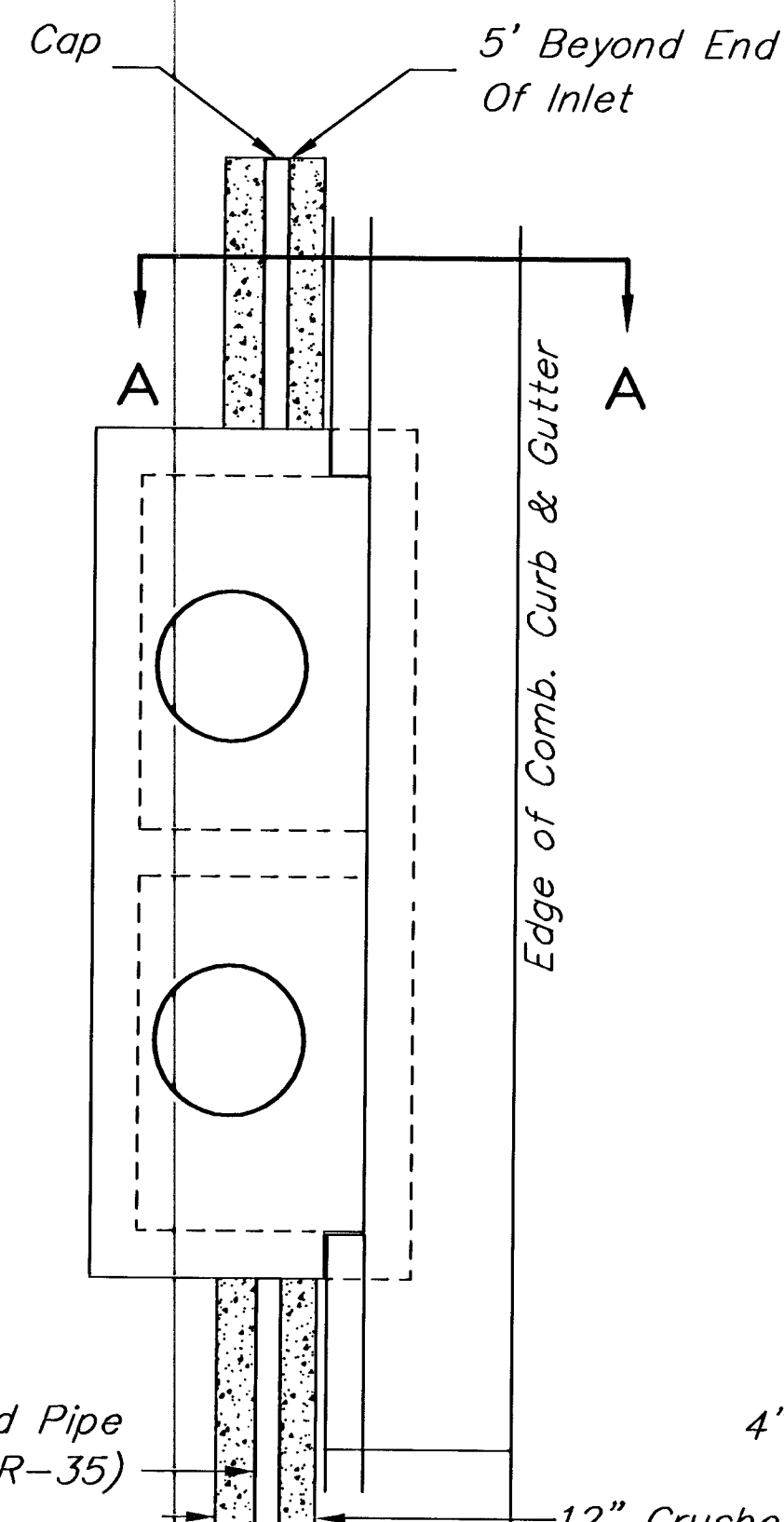
Rock Quality Shall Conform To The Requirements Specified By The KDOT 1990 Edition Standard Specification Subsection 1102 For Durability Class 1.

PAVEMENT UNDERDRAIN

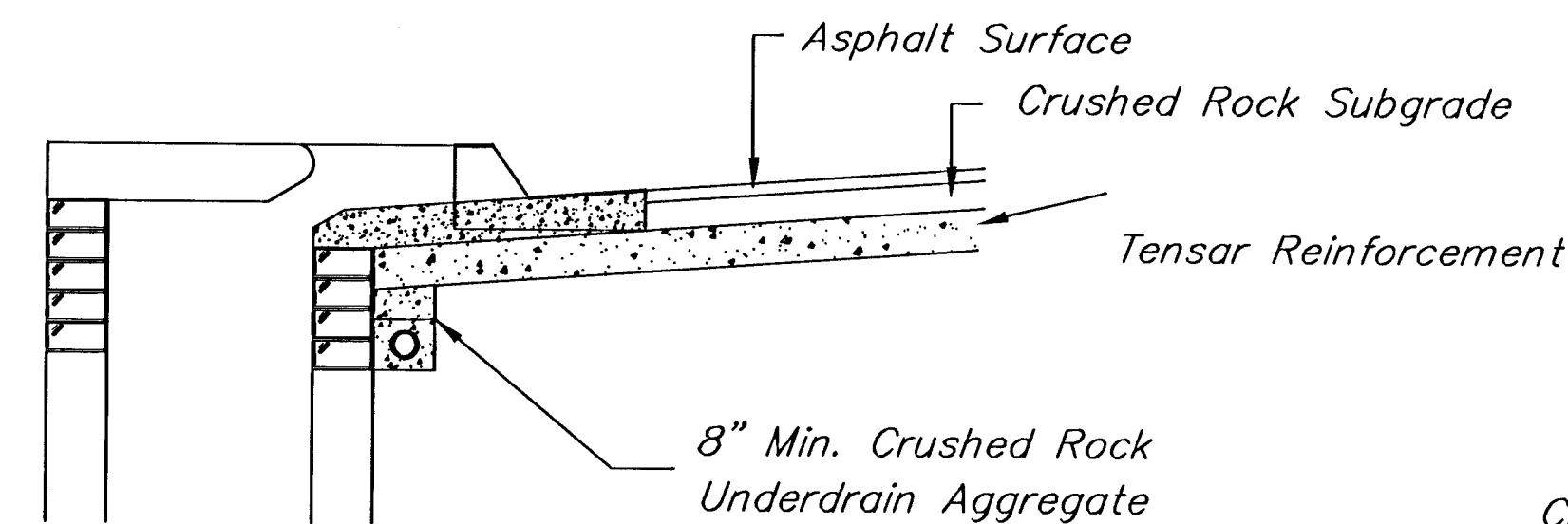


(Min. 16 Perforations Per Lin. Ft. @ 1/4" Dia.)
Perforations To Be on Bottom Half

SECTION A-A

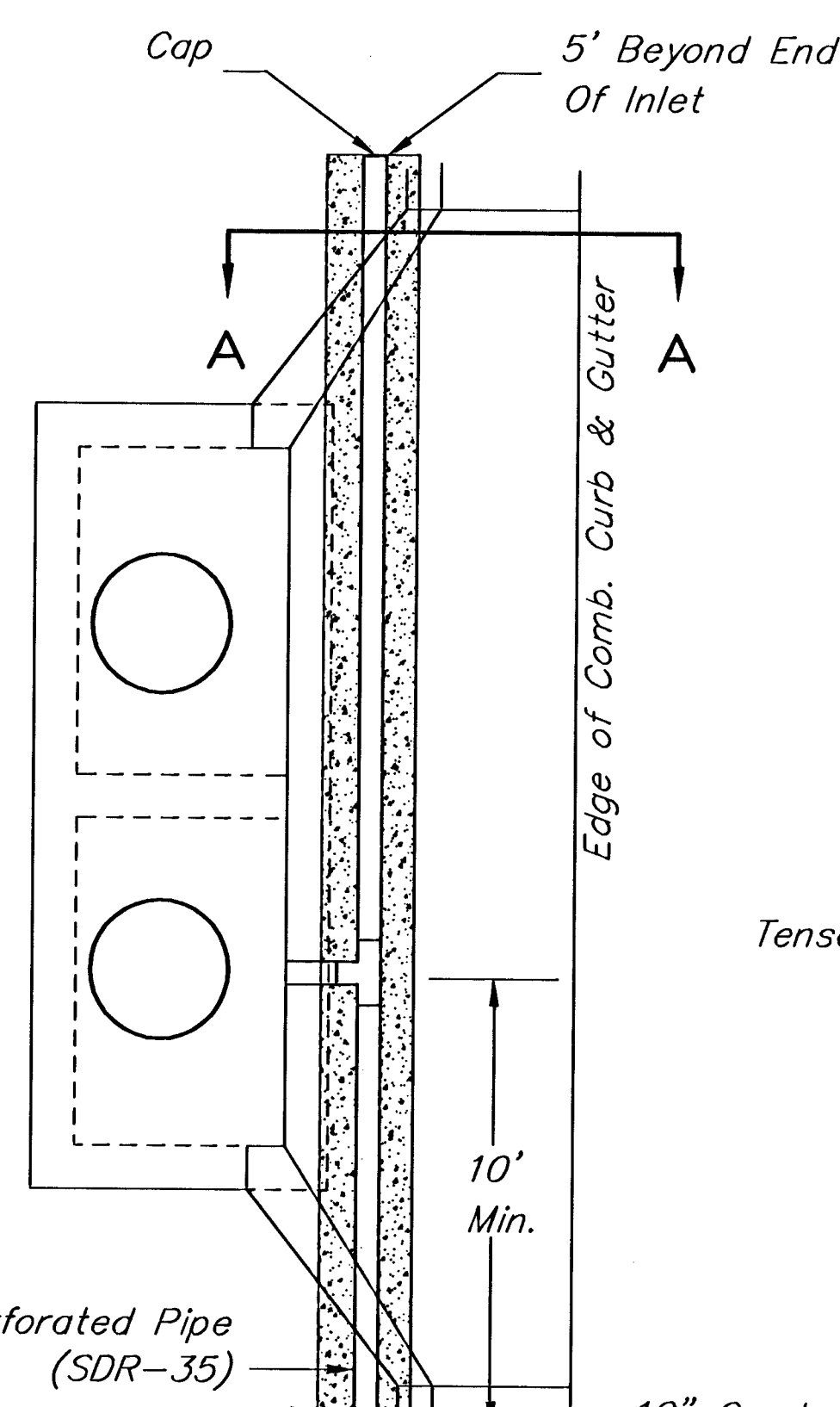


TYPE 1 & 2 INLET



(Min. 16 Perforations Per Lin. Ft. @ 1/4" Dia.)
Perforations To Be on Bottom Half

SECTION A-A



TYPE 1-A INLET

NOTE: Place 4" PVC Perforated Pipe at all drainage sump locations.

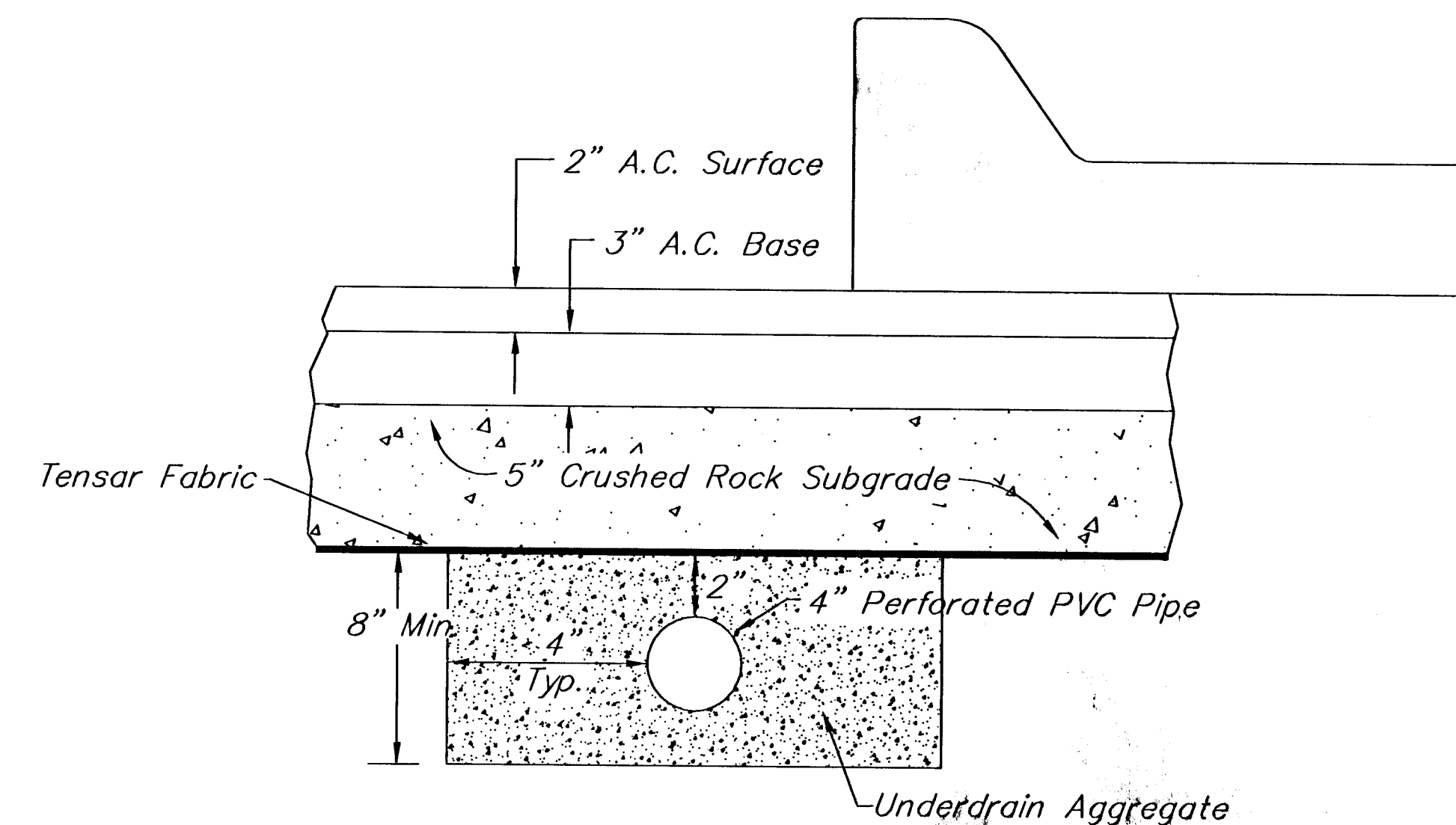
Cost of Underdrain System at sumps to be incidental to the Reinforced Crushed Rock Subgrade.

PAVEMENT UNDERDRAIN AT SUMPS

CRUSHED ROCK GRADATION REQUIREMENTS
Percent of Aggregate Retained

1 1/2"	0
3/4"	15-60
#4	40-80
#40	74-92
P-200	4-12

Rock Quality Shall Be The Same As Specified For Coarse Aggregate For Asphalt Concrete Mixes.



PAVEMENT
UNDERDRAIN DETAIL

JIM ARMOUR, P.E. - CITY ENGINEER

PROJECT NUMBER 472-83831 INDEX CODE 706866

DATE SHEET 35 OF 111