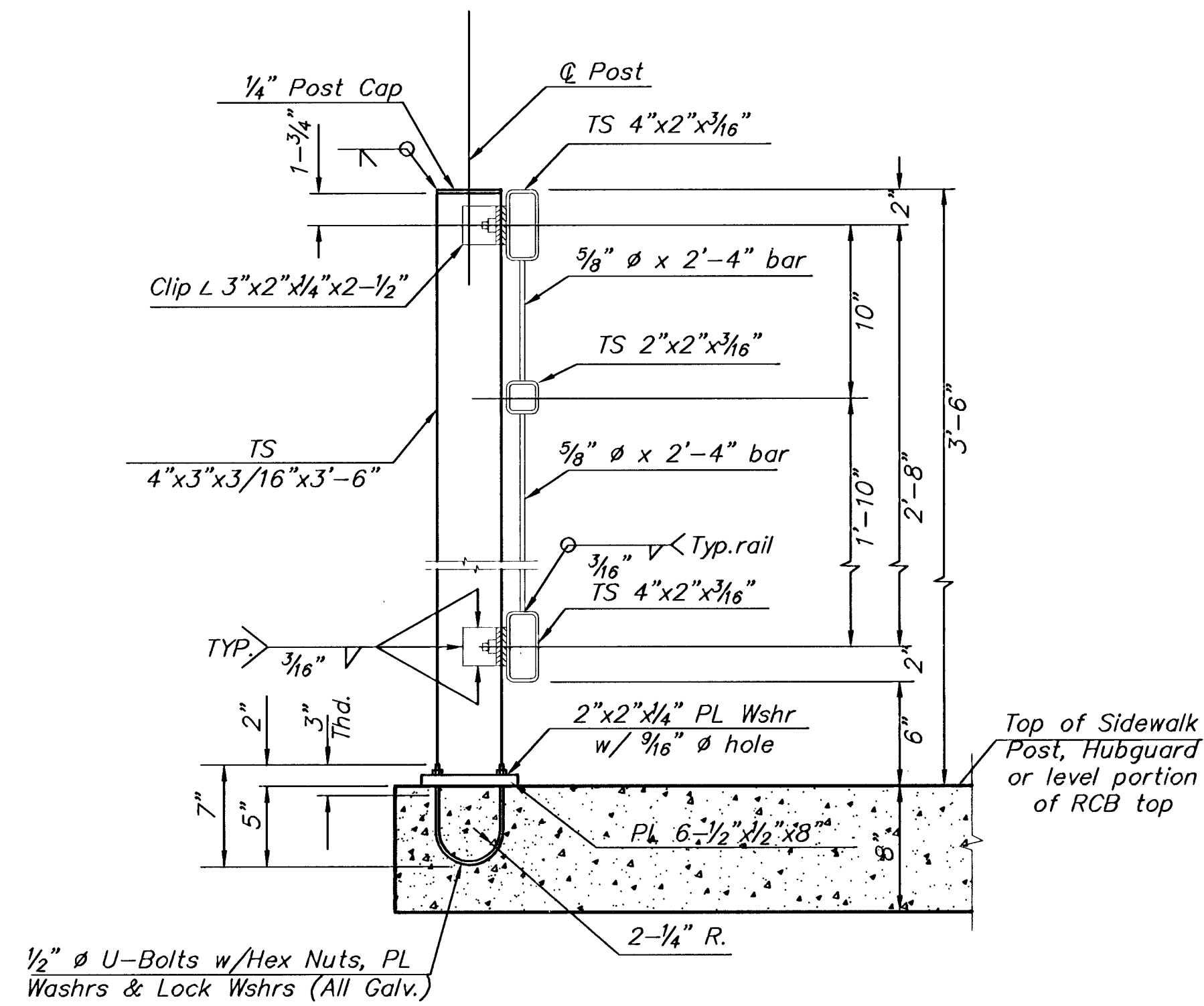


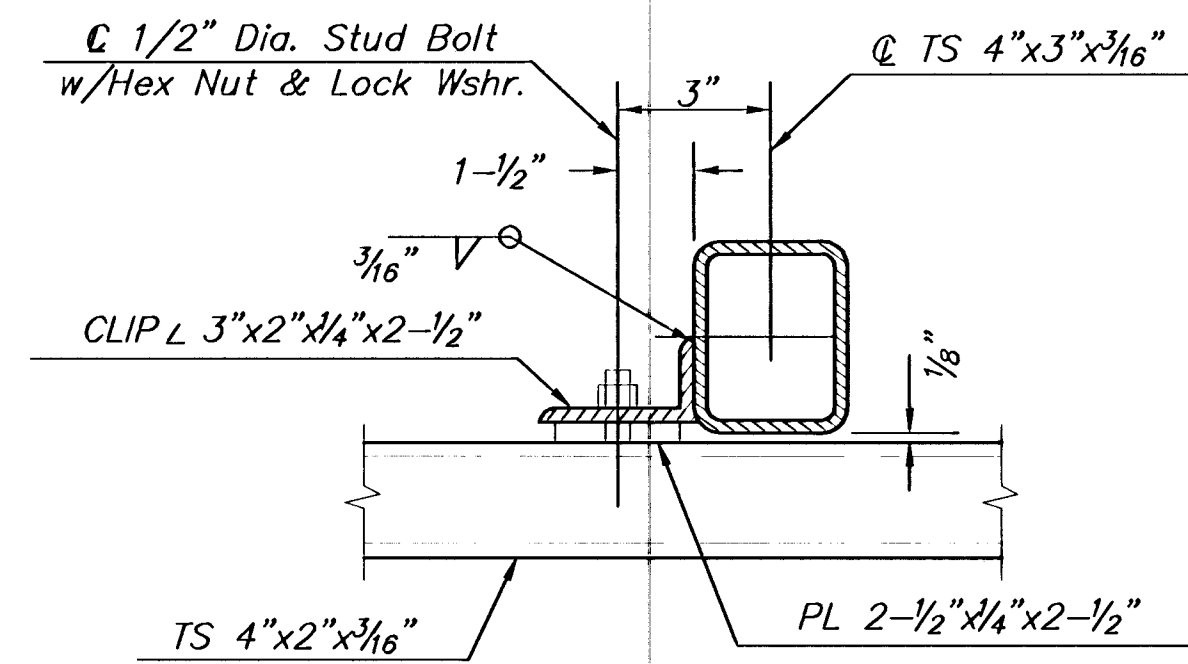
ELEVATION VIEW

HANDRAIL NOTES

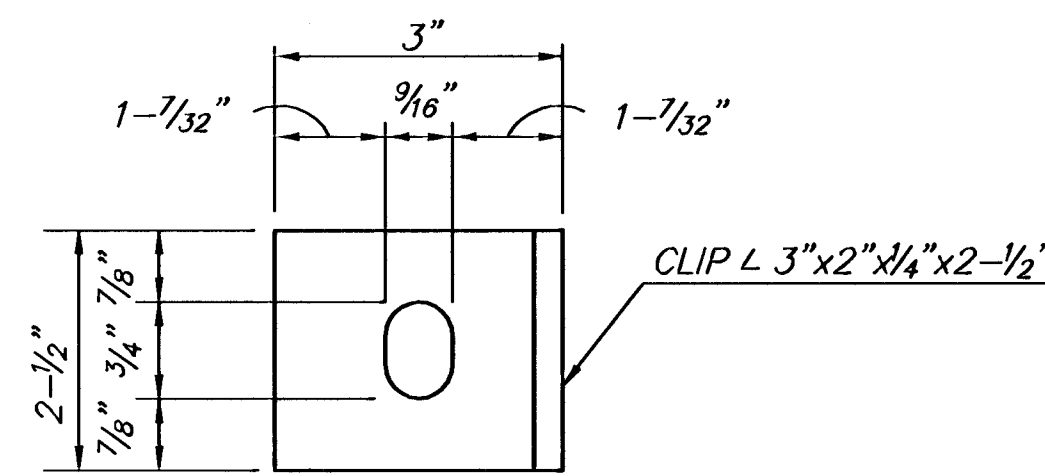
1. The rail members shall conform to ASTM Designation A36M or equivalent.
2. Posts shall be set vertical. Shims may be used between concrete and base plates of posts.
3. All parts of handrail shall be painted. The primer coat shall conform to the inorganic zinc system. Surface preparation shall be in accordance with that for structural steel. The finish coat shall be in accordance with water-borne acrylic finish coat. All materials, equipment and labor necessary for the installation of the handrail shall be subsidiary to the bid item.
4. The Contractor shall submit color chart for approval by the City. The color shall be "red brick".
5. Horizontal members (Top rail, bottom rail, and middle rail) shall be manufactured having a radius of 276".



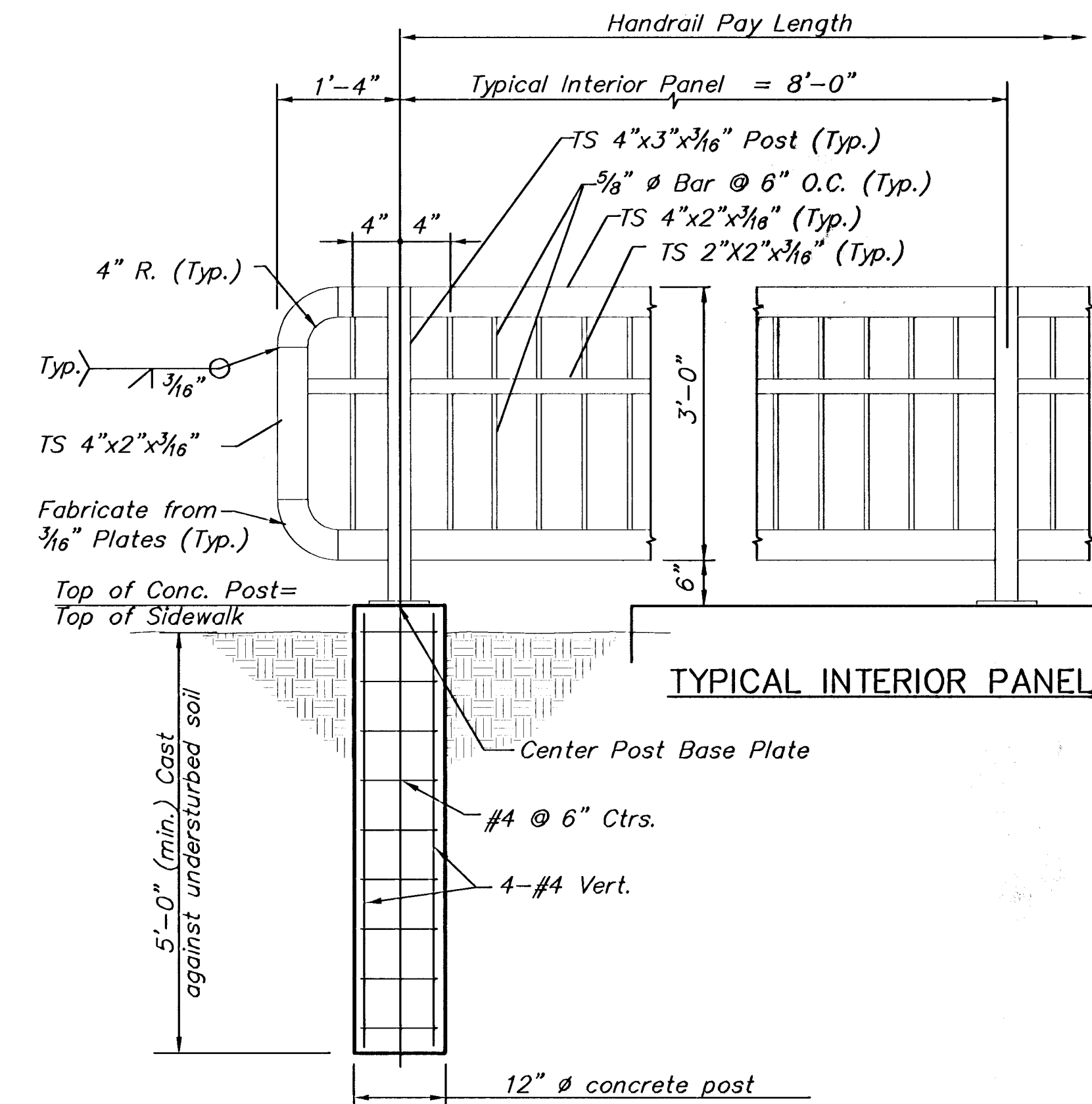
TYPICAL RAIL SECTION



RAIL CONNECTION DETAIL

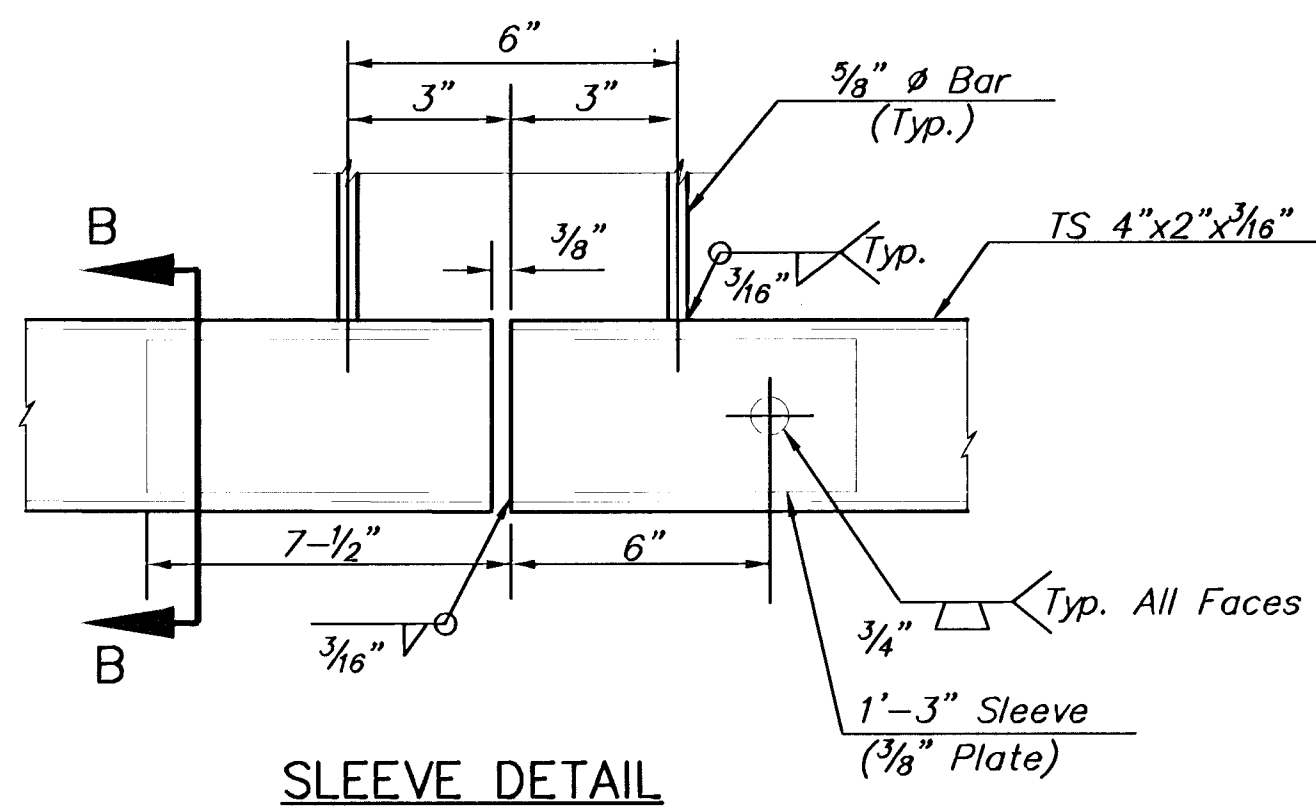


CLIP DETAIL



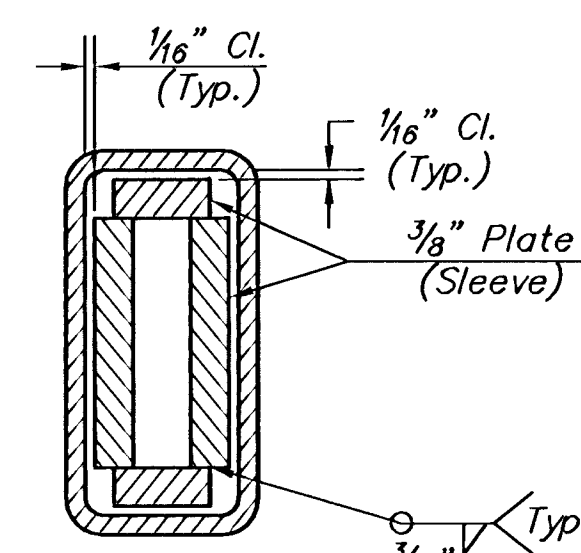
CONCRETE POST DETAIL

Concrete Post shall be Subsidiary to "Handrail (Steel)".
Locate concrete post where specified on plans

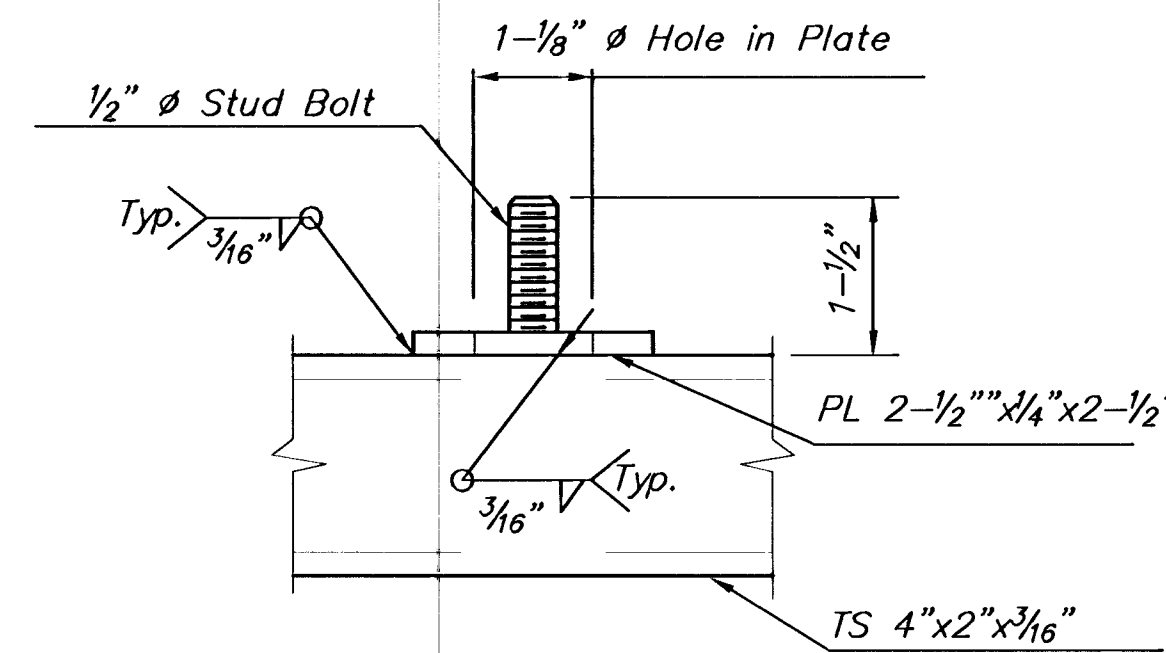


SLEEVE DETAIL

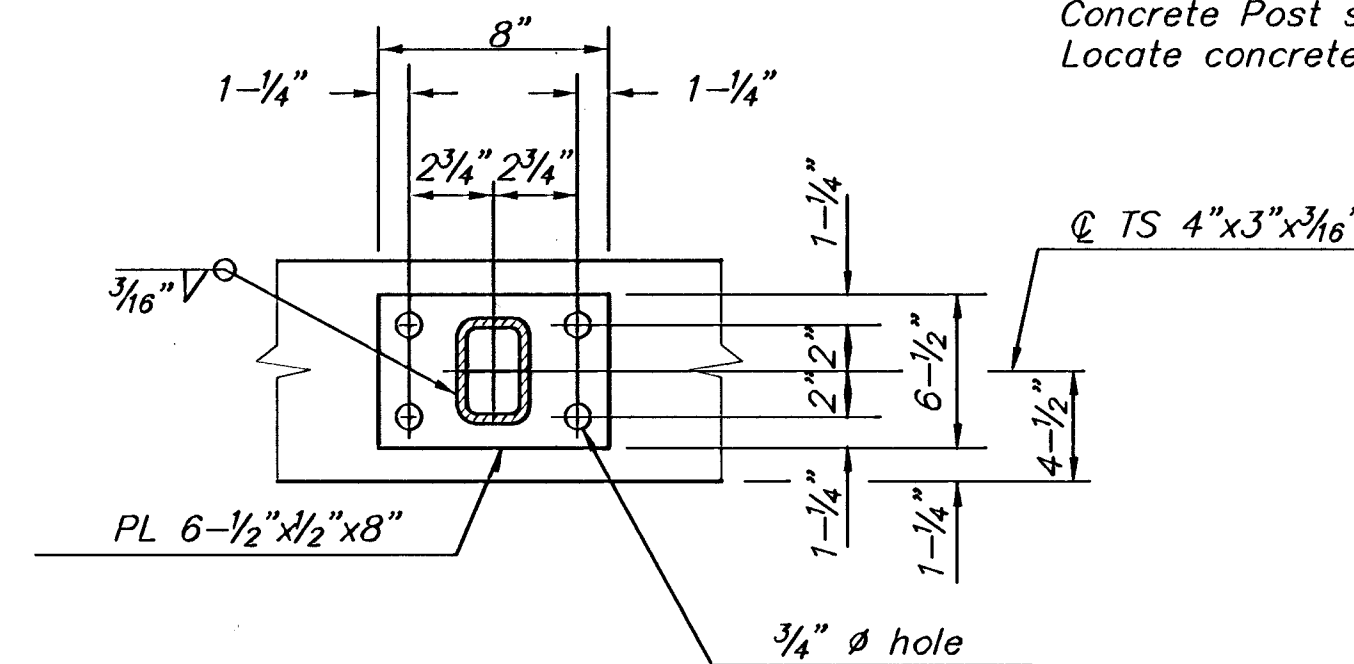
(Bottom Rail Shown, Top Rail Similar)



SECTION B-B



STUD BOLT DETAIL



BASE PLATE DETAIL

J:\Civil\03245\dwg\Details\Handrail.dwg 1/18/2005 1:15:59 PM CST



MCCORMICK AVENUE STREET IMPROVEMENTS
PROJECT NAME

HANDRAIL DETAILS
SHEET TITLE

JRA DESIGN BY.	DPG DRAWN BY.	JRA CHECKED BY.
AUGUST 2005 DATE	03245 JOB NO.	39 / 111 SHEET/OF