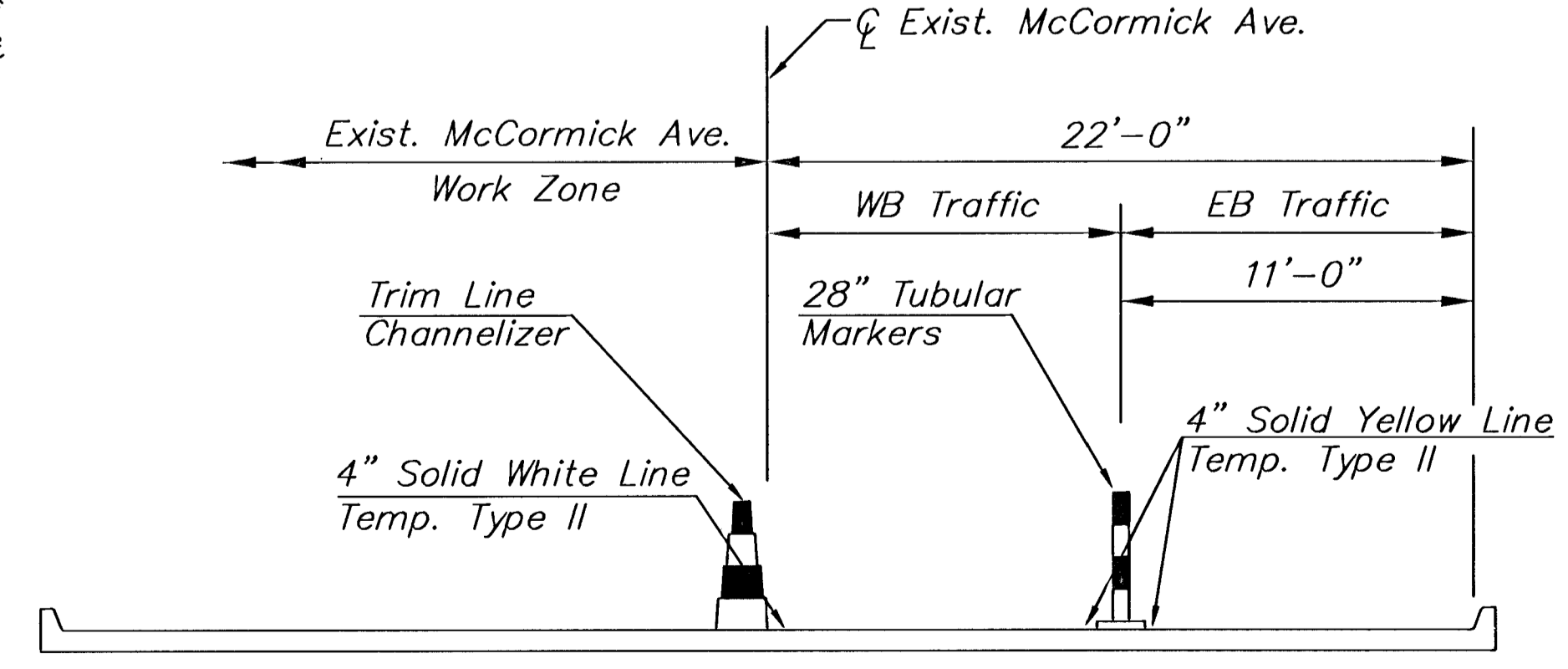
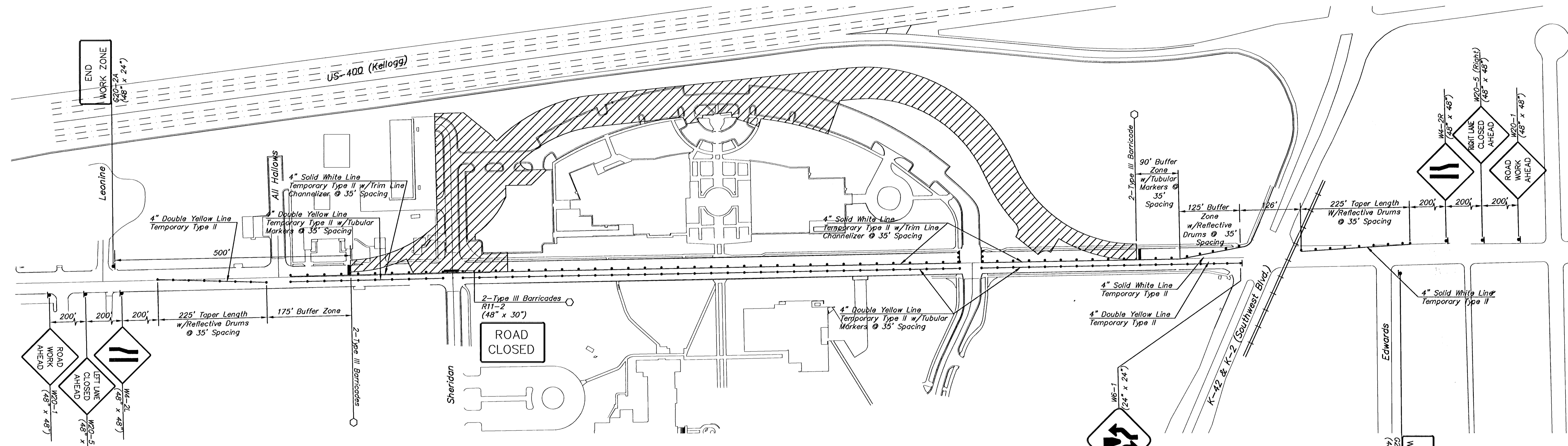
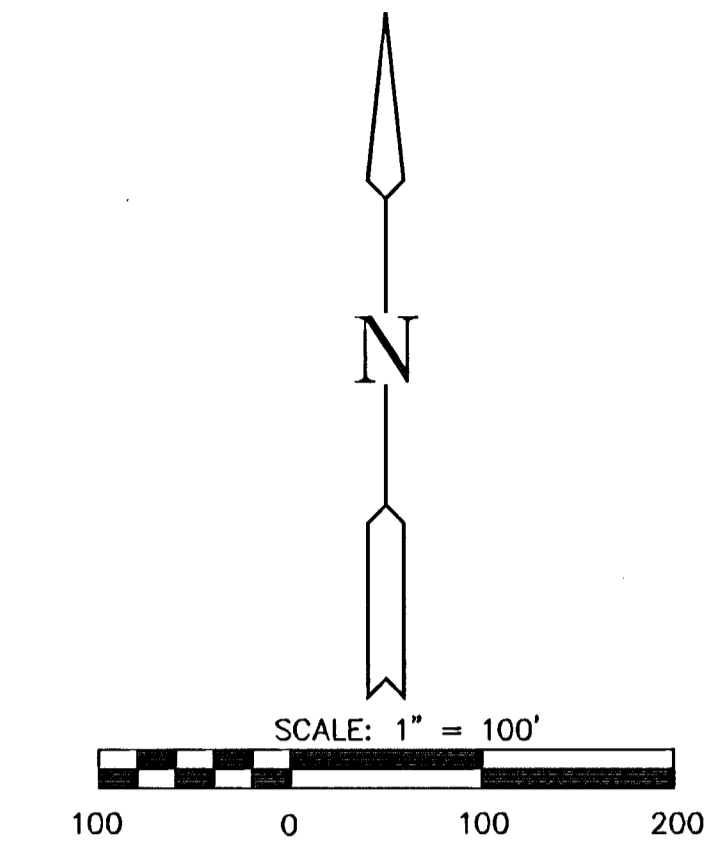


General Notes:
 Refer to Sht. 68 for identification of signs for handling traffic through construction.
 Refer to Sht. 66 for dimensions.
 Paving operations will be phased at entrances to allow continued use of the points of access.
 Lane closure will be limited to one lane at a time. Multiple Closure is shown here for information only.
 Refer to Typical Side Street Closure details for side street and entrance traffic control as necessary.
 In areas where the width of existing McCormick Avenue does not allow for construction and two-directional traffic flow as shown on this drawing, Contractor may remove a portion of curb and gutter and provide the required width with temporary asphalt pavement. Asphalt shall be removed and curb and gutter replaced upon completion of the construction phase.



LEGEND

- Type III Barricades
- Mount on Type III Barricade
- ▲ One Post Sign
- Channelizing Device
- ▨ Work Zone

MCCORMICK AVENUE STREET IMPROVEMENTS
PROJECT NAME

TRAFFIC CONTROL - PHASE I
SHEET TITLE

JRA DESIGN BY.	WNJ DRAWN BY.	KJS CHECKED BY.
AUGUST 2005 DATE	03245 JOB NO.	62/ 111 SHEET/OF