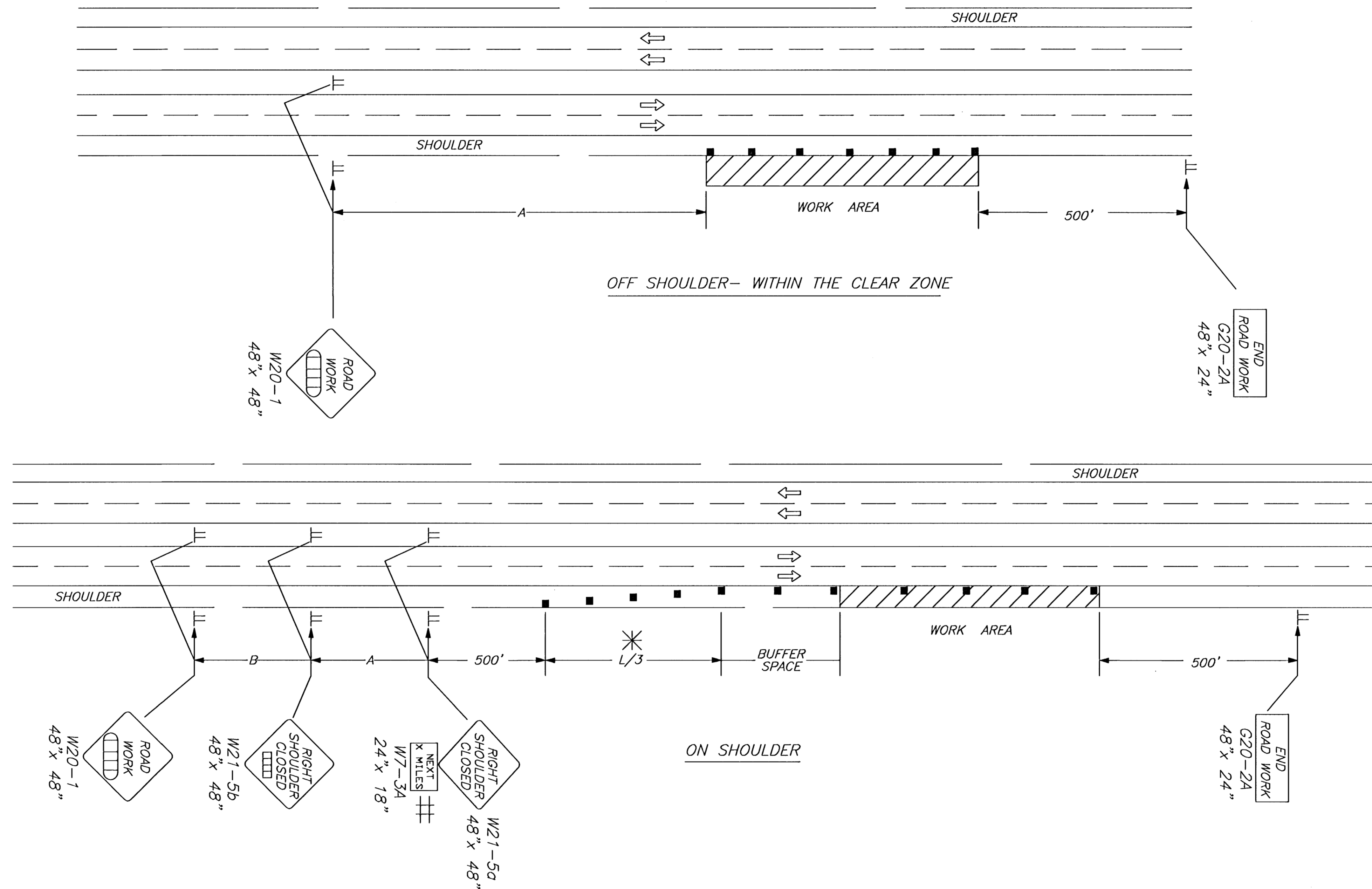


REFER TO SHT. NO. 68 FOR ADDITIONAL INFORMATION ON TRAFFIC CONTROL SIGNS AND SIGN SPACING.  
 REFER TO SHT. NO. 67 FOR INFORMATION ON TAPERS AND CHANNELIZING DEVICES.  
 REFER TO SHT. NO. 66 FOR LENGTH OF BUFFER SPACE.

NOTE: FOR WORK IN THE MEDIAN, INSTALL SIGNS AND CHANNELIZING DEVICES FOR EACH DIRECTION OF TRAFFIC ACCORDING TO THE APPLICABLE TYPICAL DRAWING.

NO TRAFFIC CONTROL IS REQUIRED IF THE WORK AREA IS LOCATED OUTSIDE OF THE CLEAR ZONE.

FOR OPERATIONS OF 60 MINUTES OR LESS, ALL SIGNS AND CHANNELIZING DEVICES MAY BE ELIMINATED IF A VEHICLE WITH AN ACTIVATED FLASHING OR REVOLVING YELLOW LIGHT IS USED.



WHEN CONCRETE SAFETY BARRIER IS USED, CHANNELIZING DEVICES ARE NOT NEEDED ALONG THE TANGENT BARRIER SECTION.

- ⊥ ELIMINATE W7-3A IF SHOULDER IS CLOSED FOR LESS THAN 2 MILES.
- \* OMIT TAPER IF PAVED SHOULDER IS LESS THAN 8' WIDE.

- X Length To The Nearest Whole Mile
- Channelizing Device
- Ahead, 1500 ft or 1 mile
- ▤ Ahead, 1000 ft, 1500 ft or 1/2 mile

KS PD 1000000 0000/00/00 0000/00/00 0000/00/00 0000/00/00



**McCORMICK AVENUE STREET IMPROVEMENTS**  
 PROJECT NAME  
**TYPICAL TRAFFIC CONTROL**  
**WORK ON OR NEAR THE SHOULDER DIVIDED HIGHWAY**  
 SHEET TITLE

JRA DESIGN BY:	JSB DRAWN BY:	JRA CHECKED BY:
AUGUST 2005 DATE	03245 JOB NO.	68A / 111 SHEET/OF