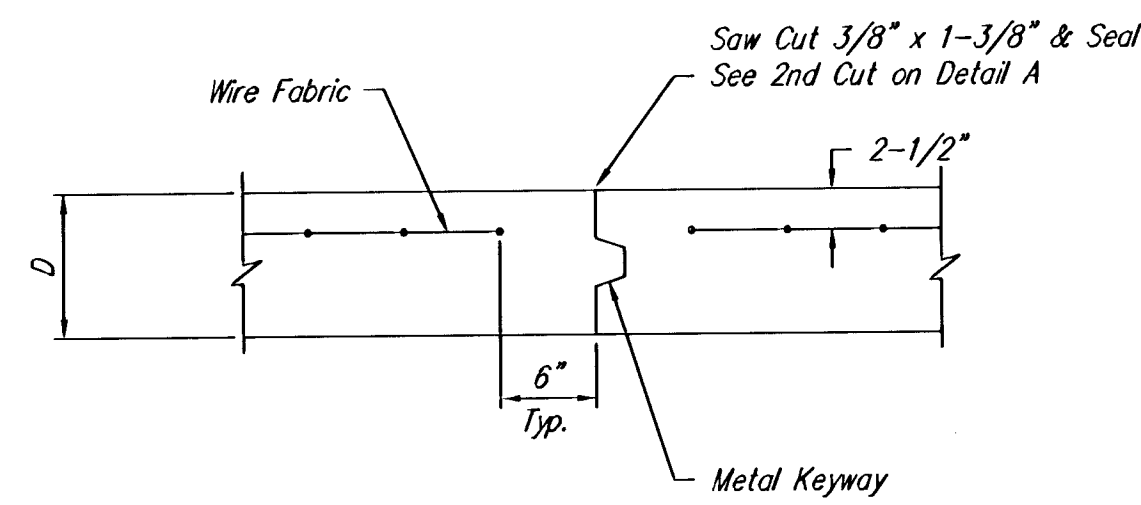
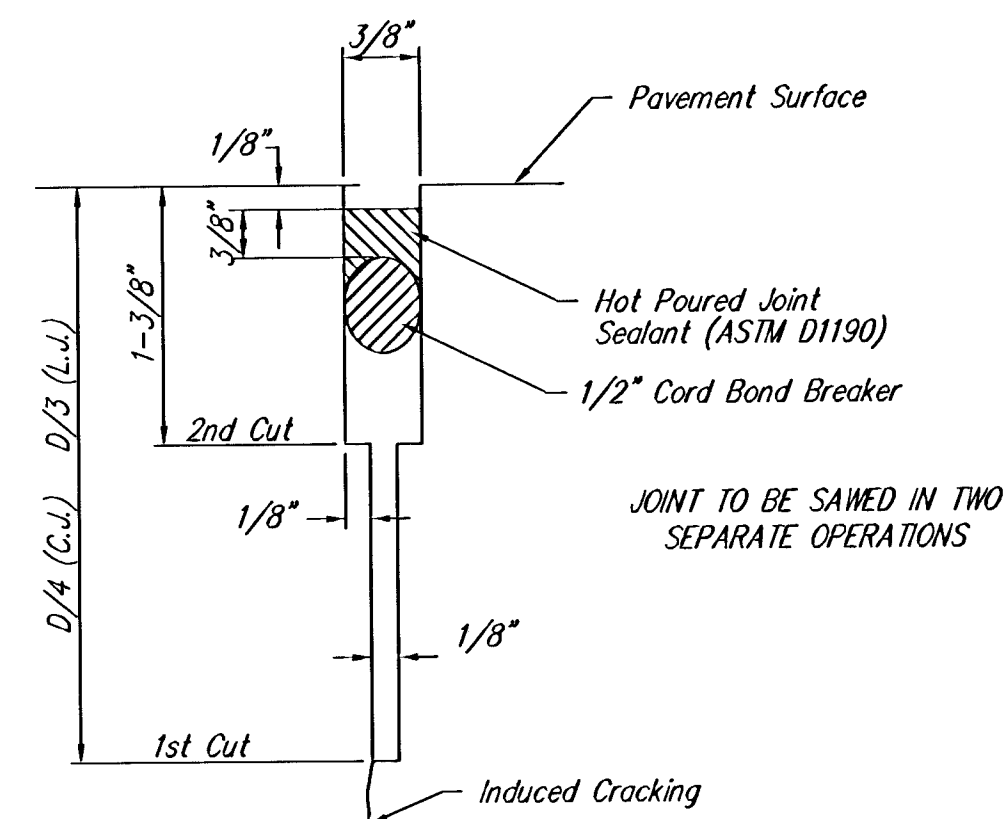


**EXPANSION JOINT**

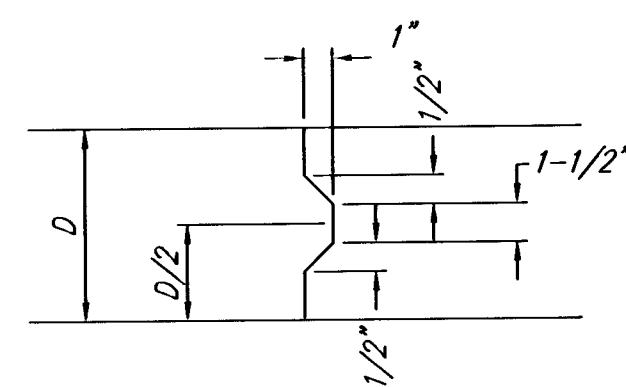
NOTE: Extra thickness to be Subsidiary to Price of Square Yards Pavement



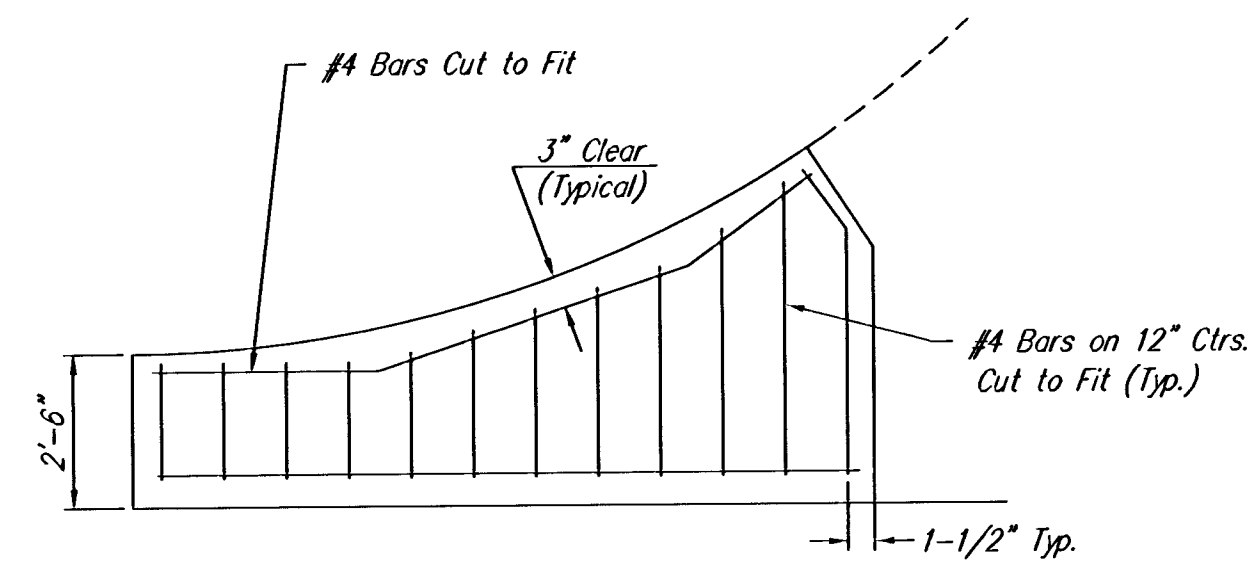
**OPTIONAL CONTRACTION JOINT**



**SAW JOINT DETAIL**

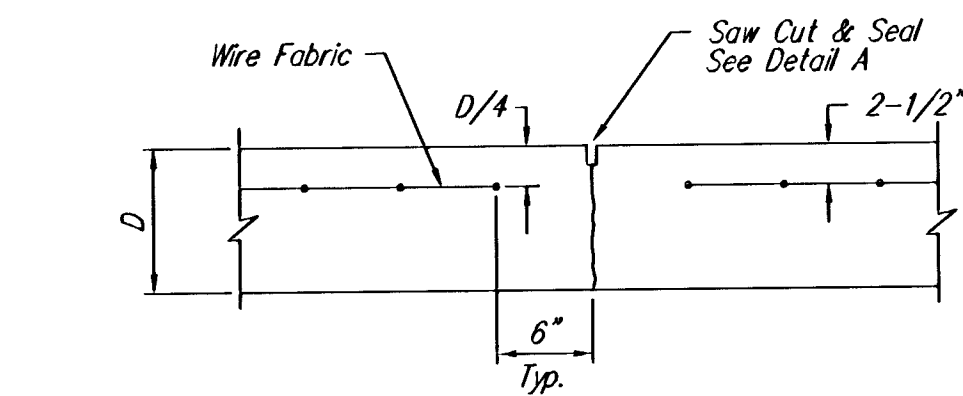


**KEYWAY DETAIL**

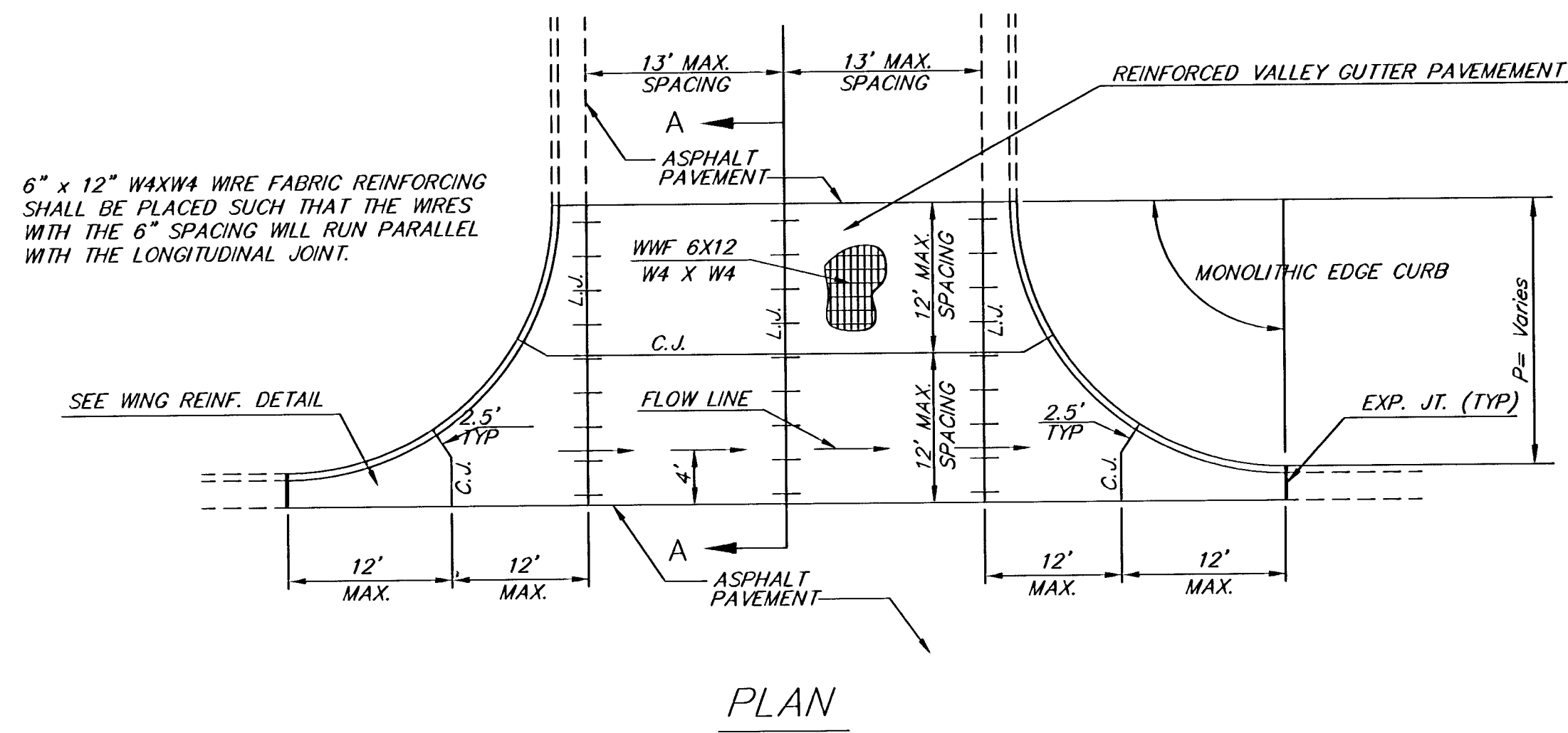


**WING REINFORCING DETAIL**

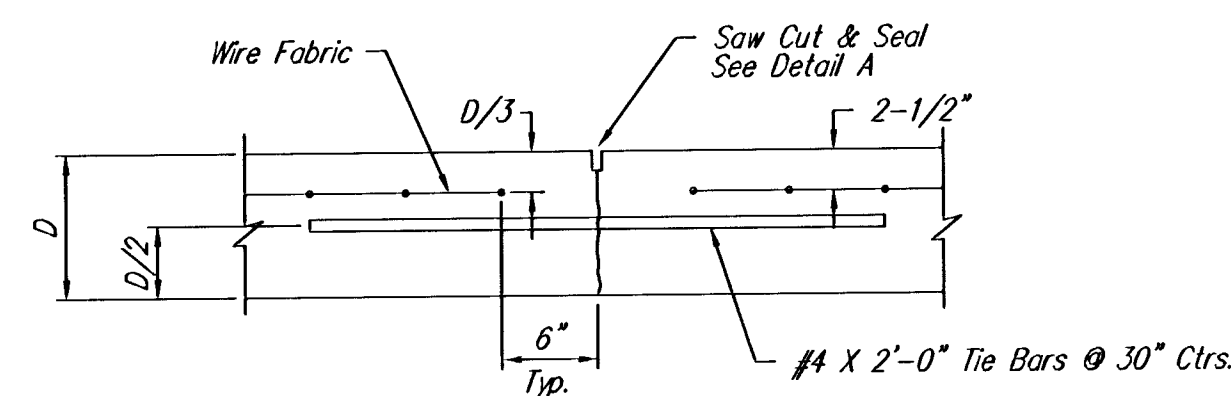
8" Valley Gutter Concrete Pavement					
Street	Station	Side	P	W	Sq. Yds.
St. Paul	13+73.98	RT	30.01'	31'	171.8
St. Paul	15+23.30	LT	23.5'	31'	119.5
Gordon	16+85.78	RT	30'	31'	172.0
Gordon	19+08.30	LT	23.5'	31'	119.3
Edwards	22+58.00	RT	30'	31'	171.1
Edwards	22+80.00	LT	23.5'	31'	118.7
Richmond	26+29.00	RT	20.10'	31'	108.1
Richmond	26+40.00	LT	20.01'	31'	107.4
Total					1087.9



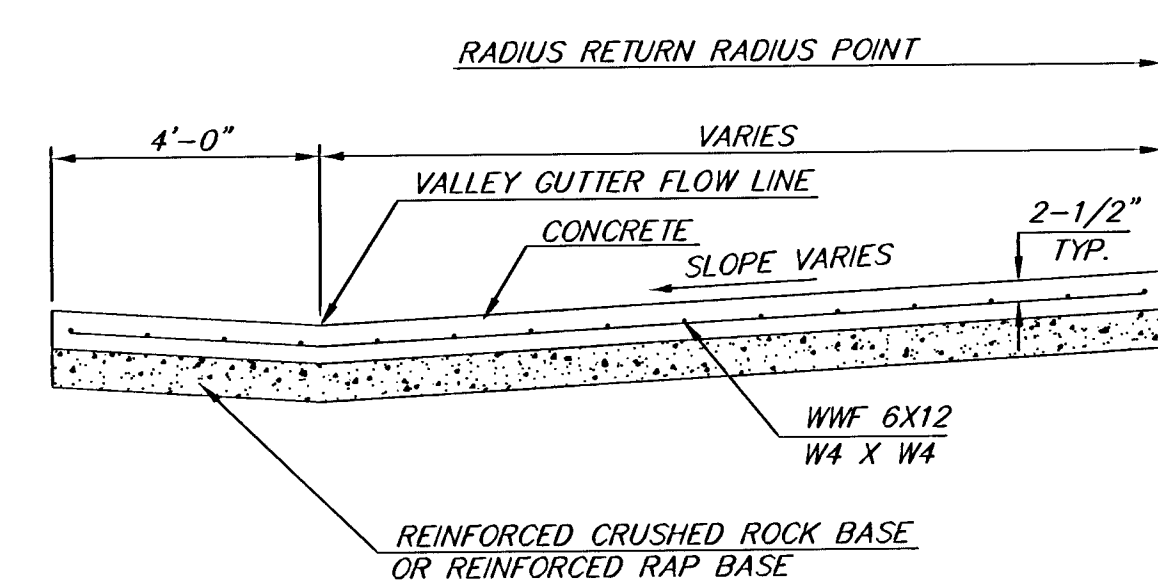
**CONTRACTION JOINT DETAIL (C.J.)**



**PLAN**

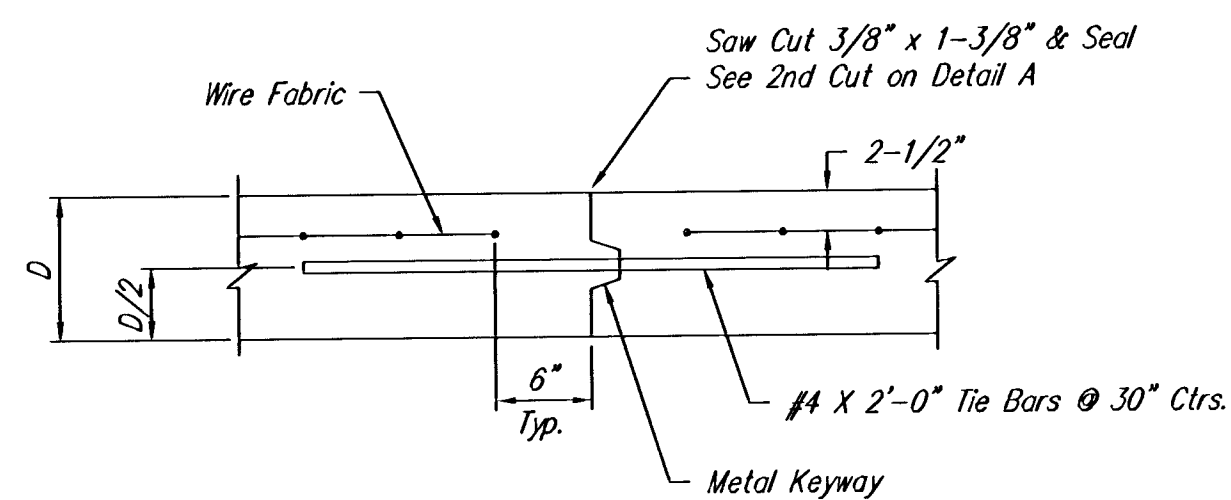


**LONGITUDINAL JOINT DETAIL (L.J.)**



**SECTION A-A**

**REINFORCED VALLEY GUTTER DETAIL**



**OPTIONAL LONGITUDINAL JOINT DETAIL (L.J.)**

<p>THE CITY OF WICHITA CITY ENGINEER'S OFFICE 455 NORTH MAIN STREET WICHITA, KANSAS 67202 (316) 268-4501 (316) 268-4114 FAX</p>	<b>VALLEY GUTTER DETAILS &amp; PAVER DETAILS</b>	
	JAMES ARMOUR P.E. - CITY ENGINEER	
	PROJECT NUMBER 472-84001	INDEX CODE 706900
	DATE MAR 96	SHEET 12 OF 58