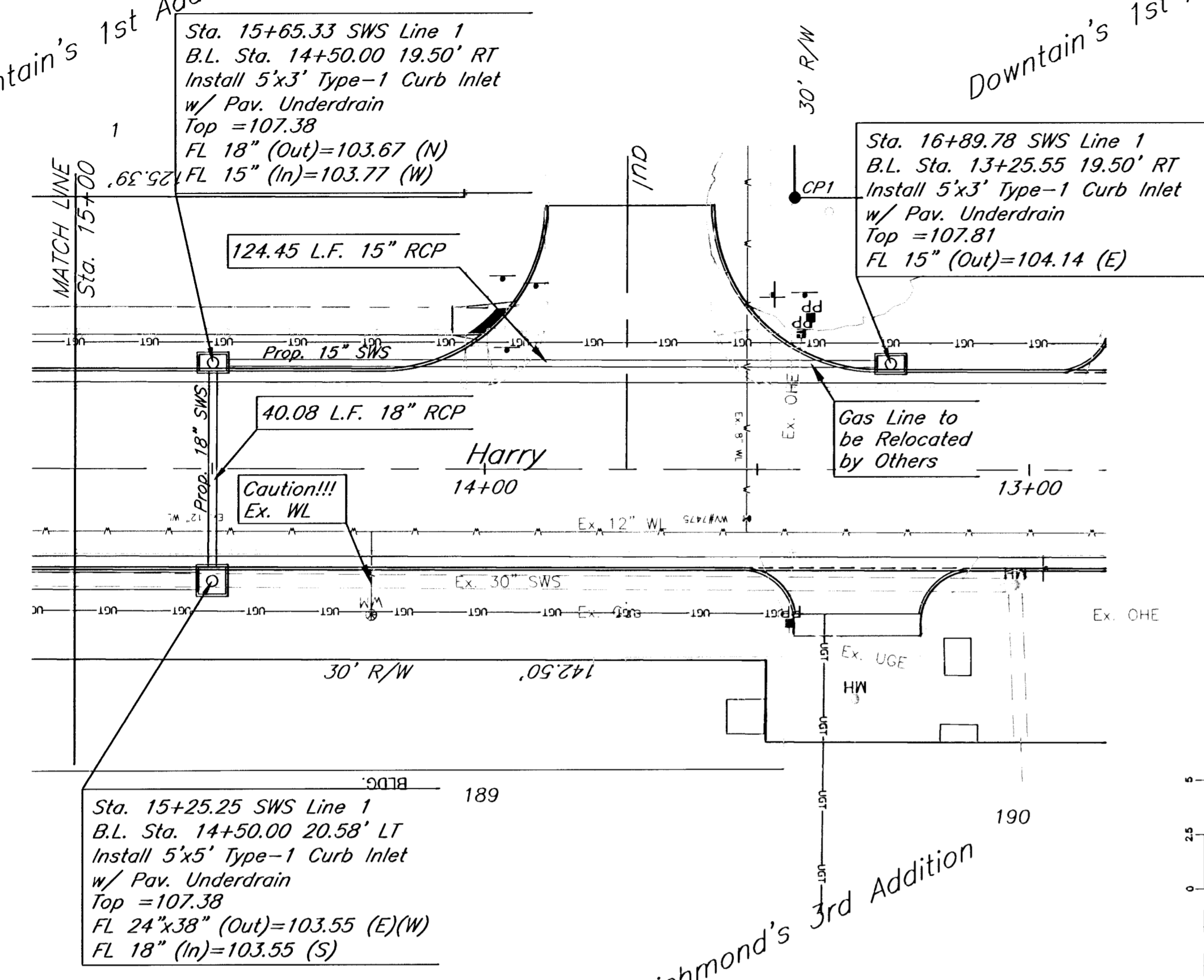
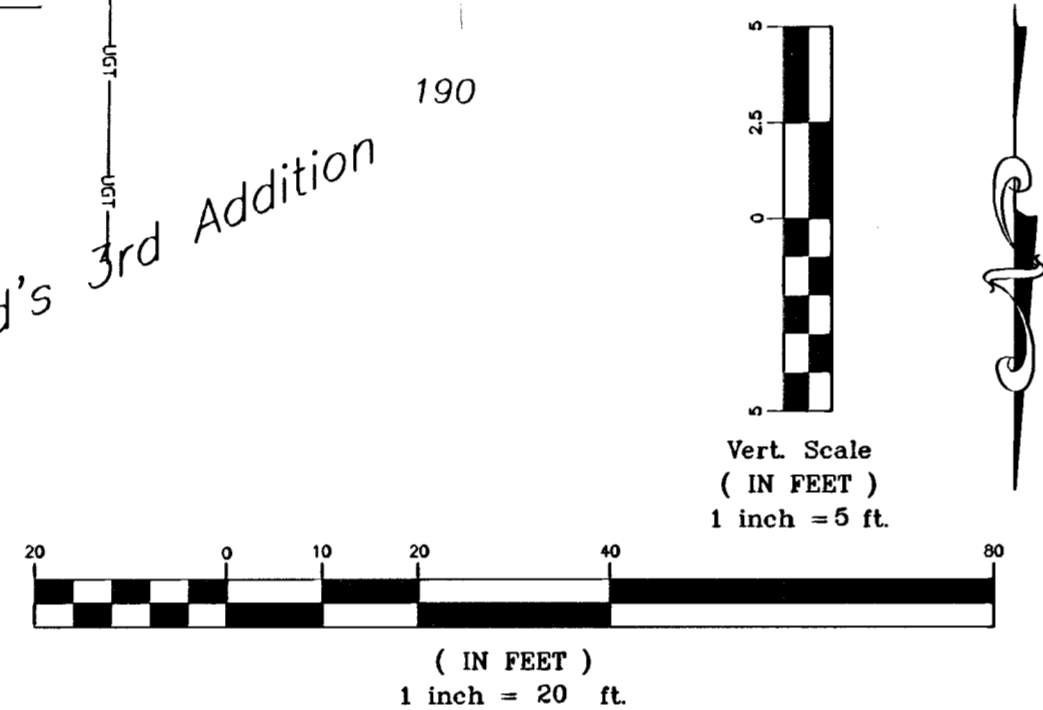


Downtown's 1st Addition

Downtown's 1st Addition

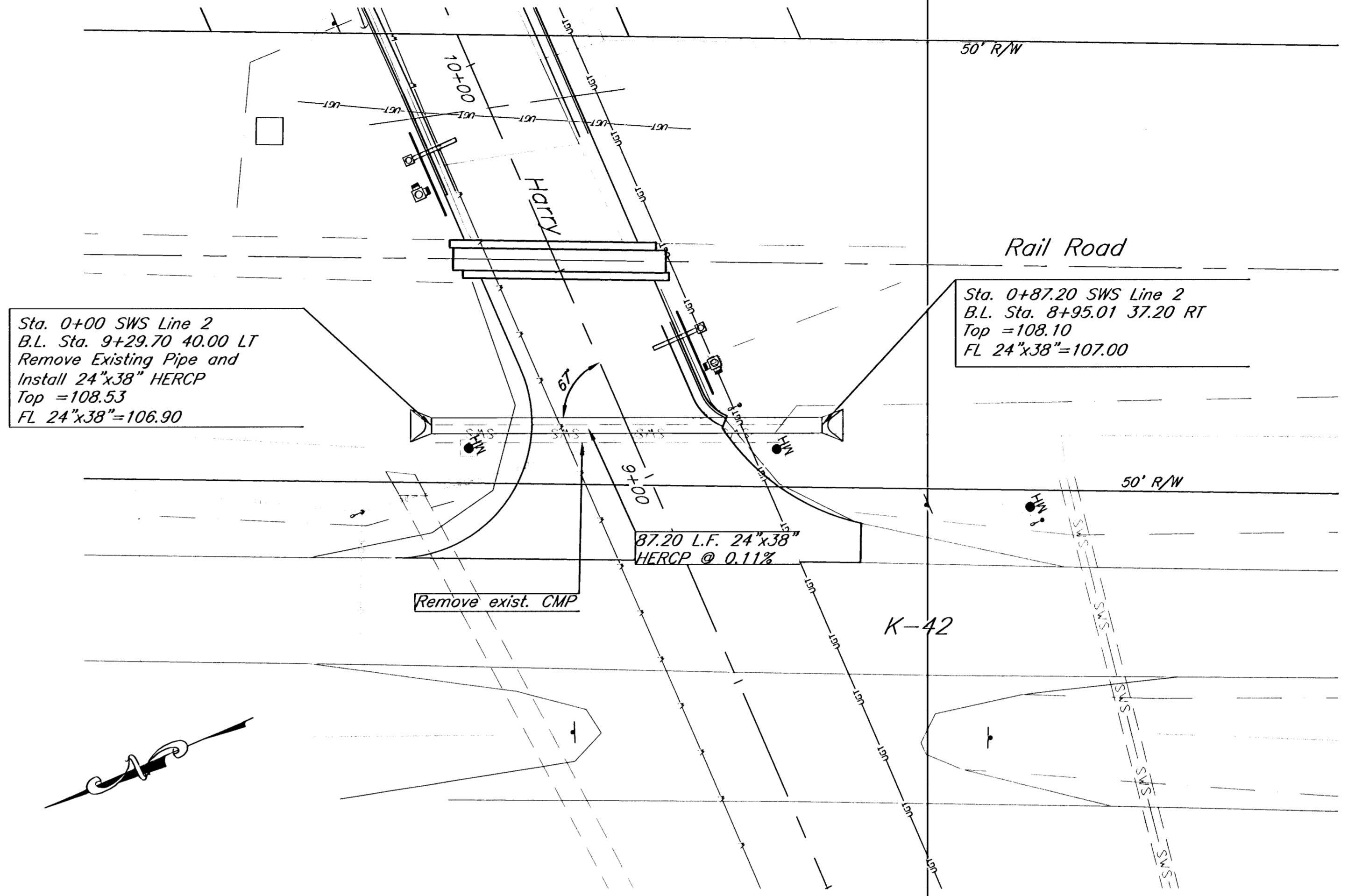


Richmond's 3rd Addition

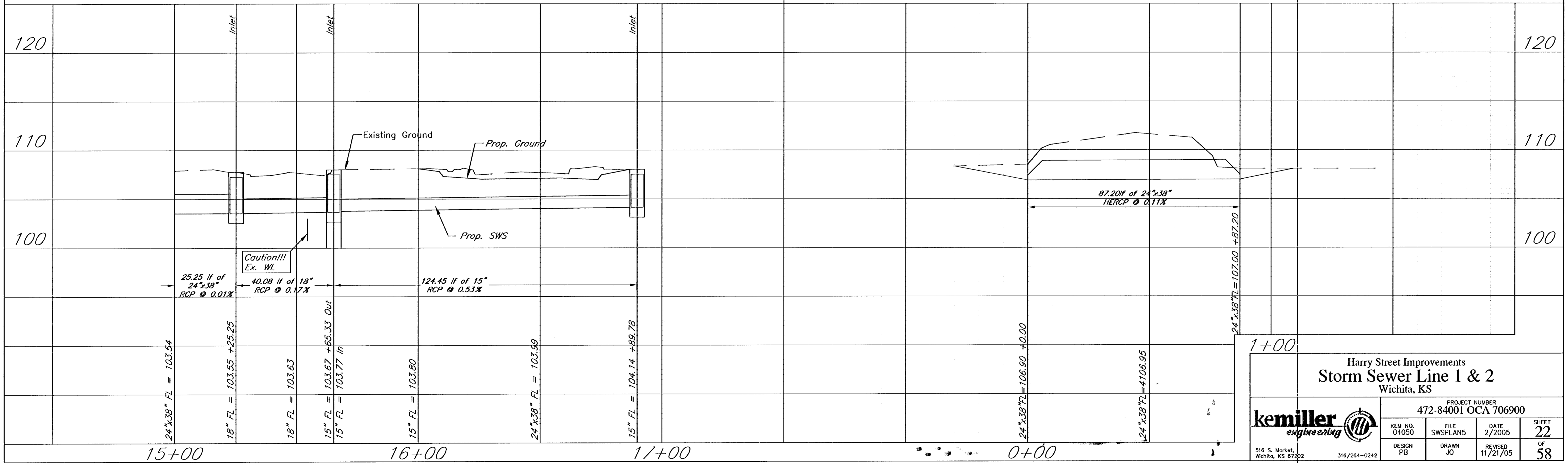


Sta. 0+00 SWS Line 2
B.L. Sta. 9+29.70 40.00 LT
Remove Existing Pipe and
Install 24"x38" HERCP
Top = 108.53
FL 24"x38" = 106.90

Sta. 0+87.20 SWS Line 2
B.L. Sta. 8+95.01 37.20 RT
Top = 108.10
FL 24"x38" = 107.00



Back Fill Note:
Under proposed Pavement area, backfill
trench with jetted sand. Cost to be
subsidiary to pipe unit cost.



Harry Street Improvements
Storm Sewer Line 1 & 2
Wichita, KS

PROJECT NUMBER
472-84001 OCA 706900

KEM NO. 04050	FILE SWSPLANS	DATE 2/2005	SHEET 22
DESIGN PB	DRAWN JO	REVISED 11/21/05	OF 58

516 S. Market
Wichita, KS 67202

316/264-0242