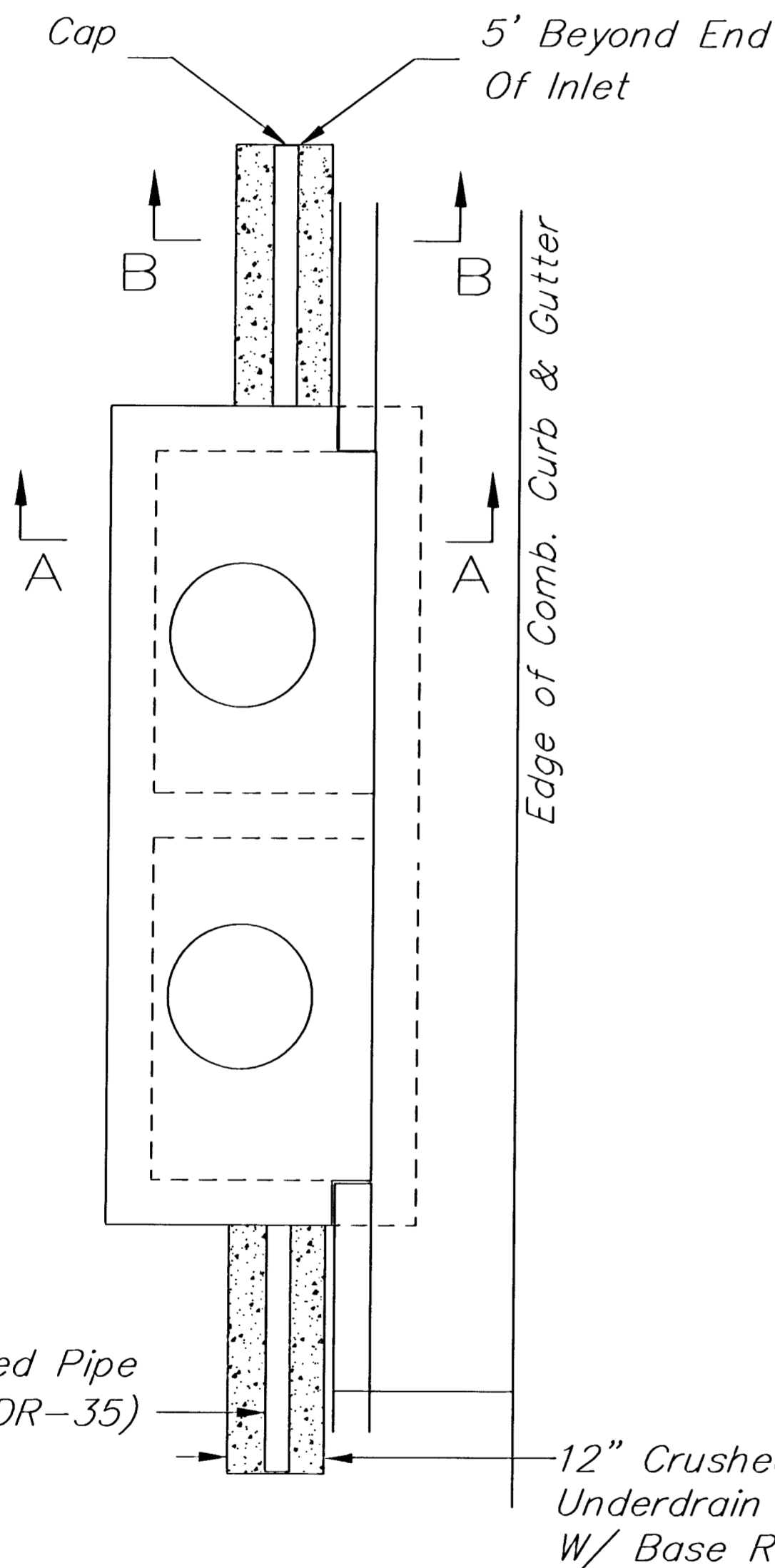


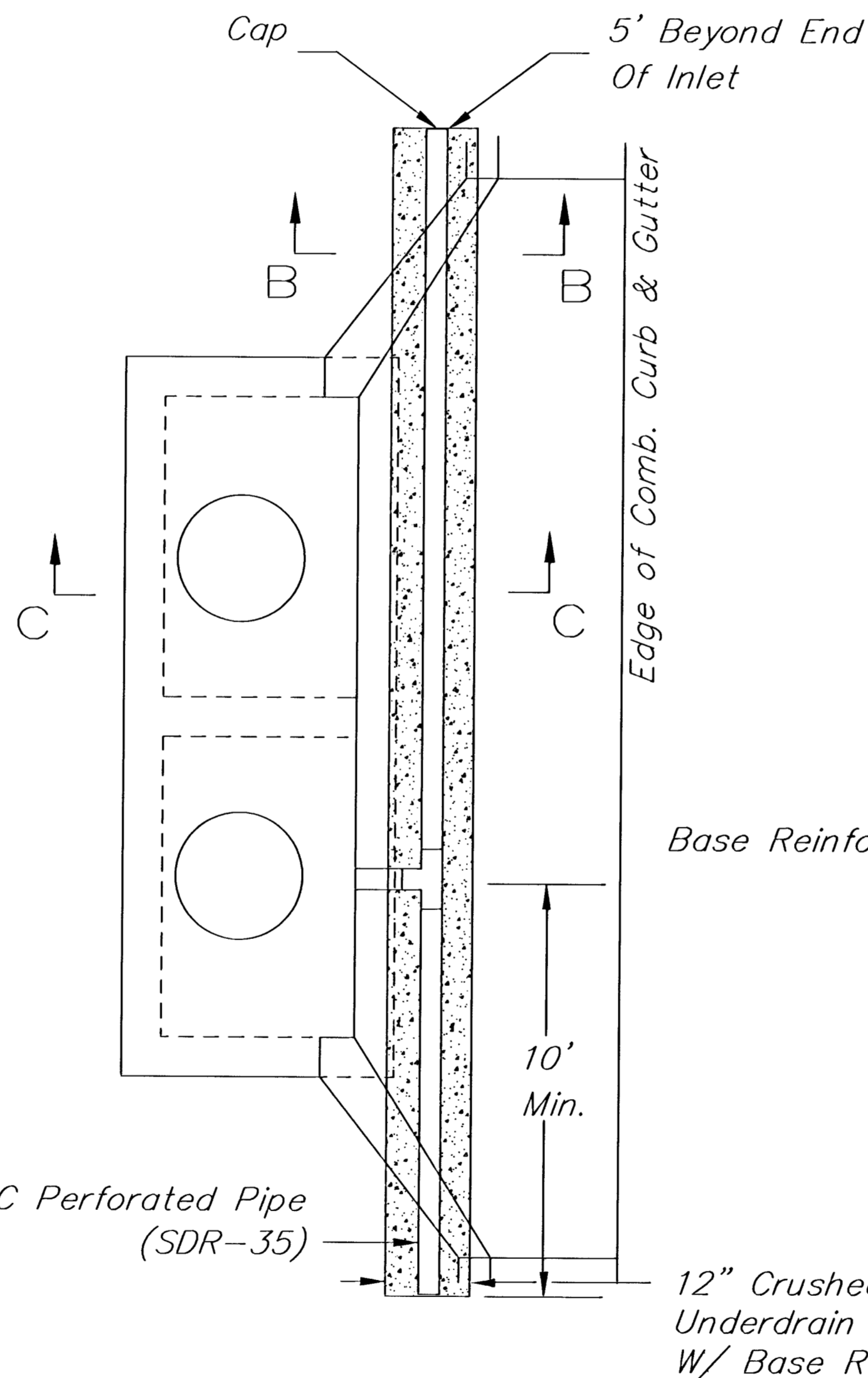
SECTION C-C

(Min. 16 Perforations Per Lin. Ft. @ 1/4" Dia.)  
Perforations To Be on Bottom Half

SECTION A-A



Type 1 & 2 Inlet

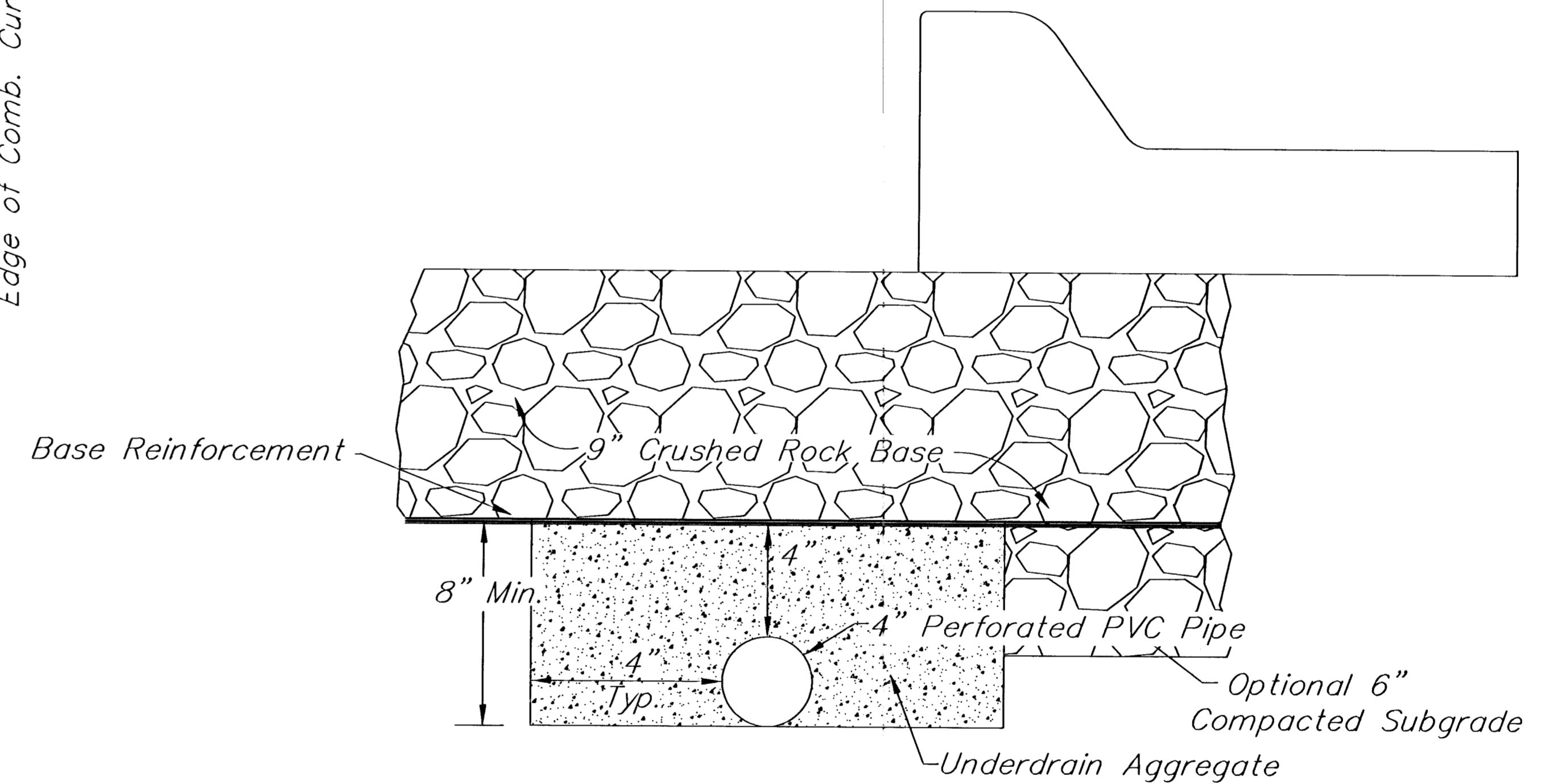


Type 1-A Inlet

UNDERDRAIN AGGREGATE REQUIREMENTS  
Percent of Aggregate Retained

1 1/2"	0
3/4"	15-60
# 4	40-80
#40	74-92
P-200	4-12

Rock Quality Shall Be The Same As Specified  
For Coarse Aggregate For Concrete Mixes.



SECTION B-B

PAVEMENT UNDERDRAIN DETAIL

NOTE: Place 4" PVC Perforated Pipe at all drainage sump locations.

Cost of Underdrain System to be subsidiary to the Reinforced Crushed Rock Subgrade.

REV. 11-22-00, MCG

<p>THE CITY OF WICHITA</p> <p>CITY ENGINEER'S OFFICE CITY HALL - SEVENTH FLOOR 405 NORTH MAIN STREET WICHITA, KANSAS 67202 (316) 268-4001 (316) 268-4114 FAX</p>	<p>PAVEMENT UNDERDRAIN DETAIL</p>	
	<p>JIM ARMOUR P.E. - CITY ENGINEER</p>	
	<p>PROJECT NUMBER 472-84001</p>	<p>INDEX CODE 706900</p>
	<p>DATE MAR 96</p>	<p>SHEET 28 OF 58</p>

DAVIDSON DWG