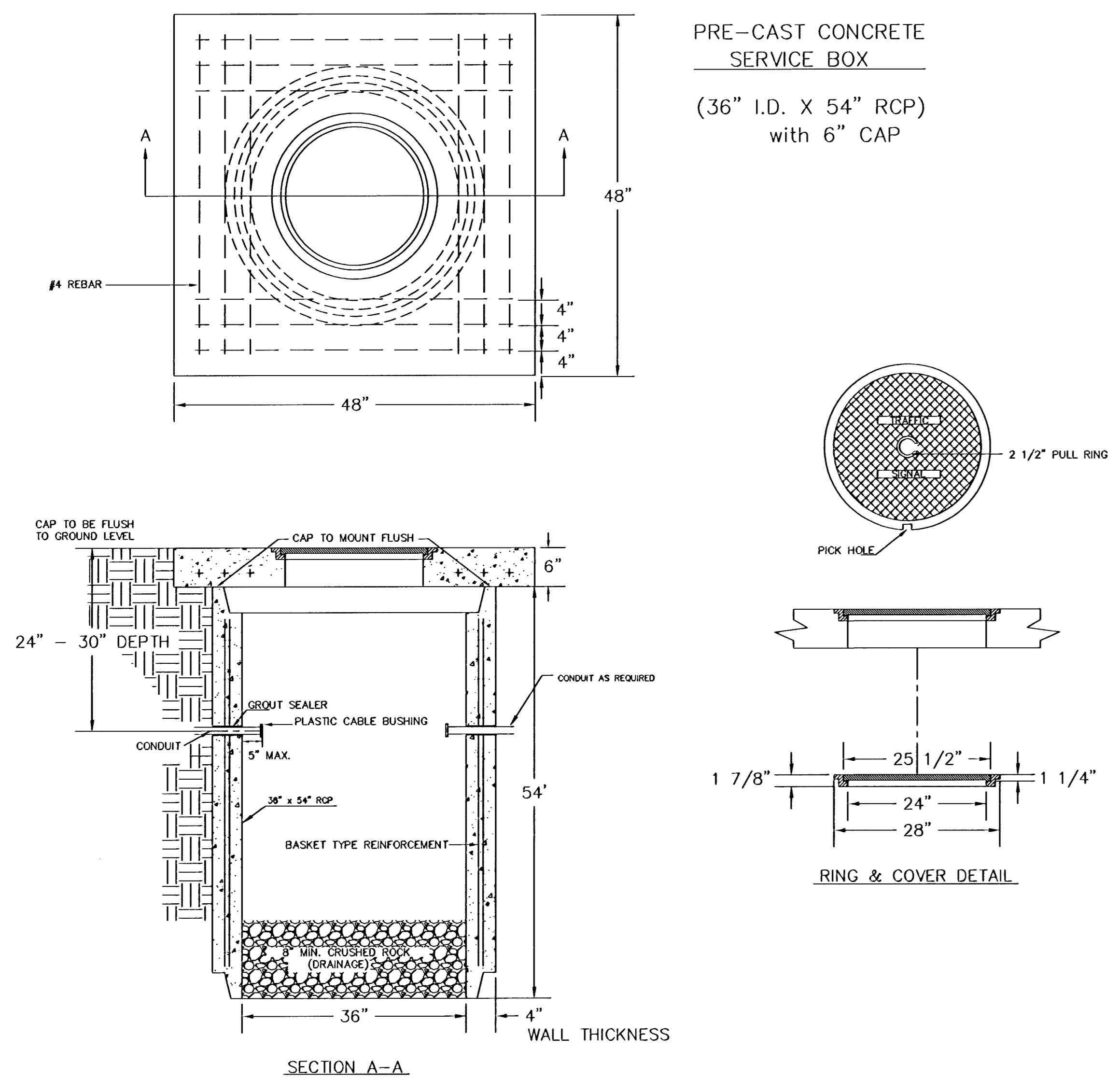
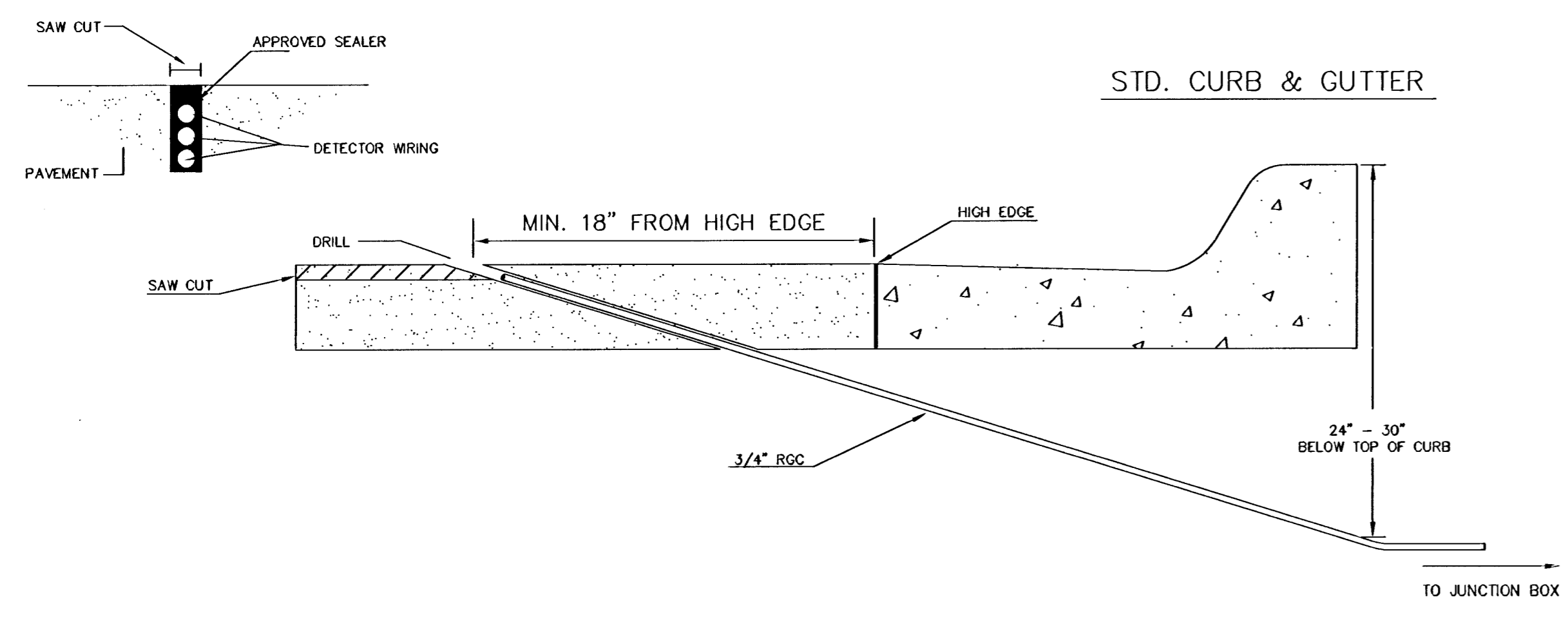


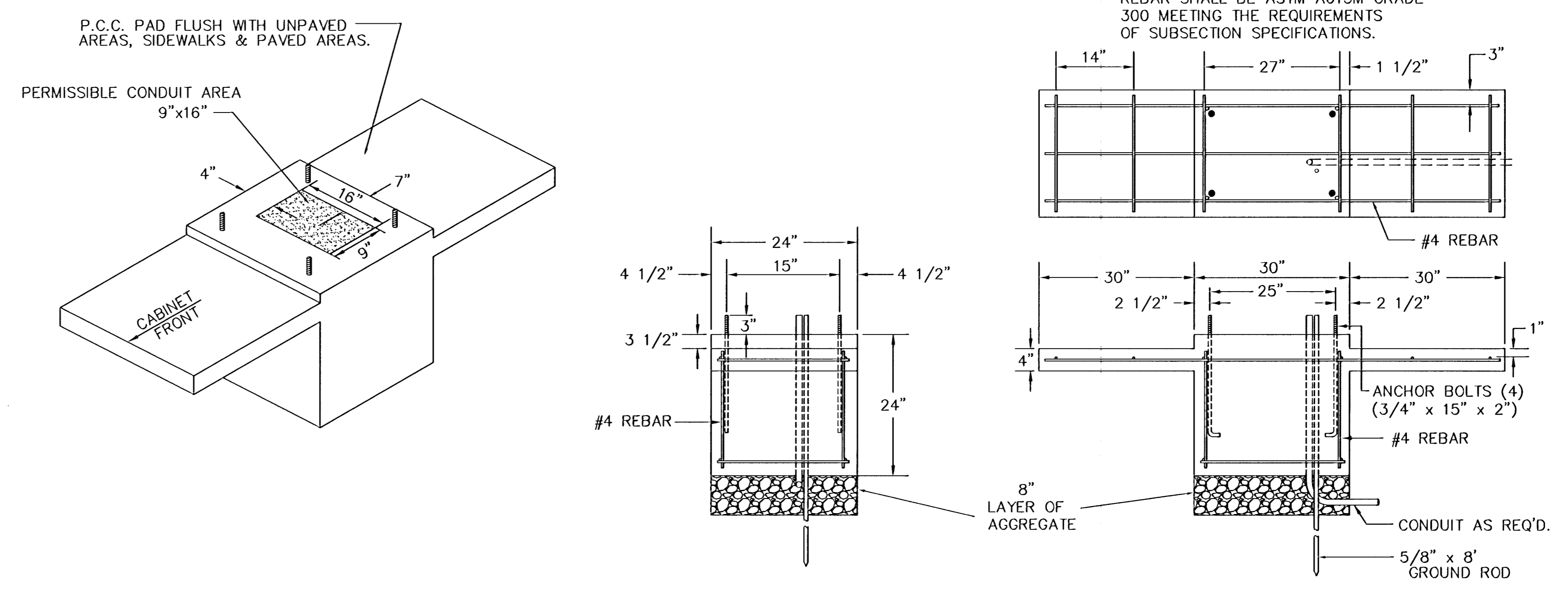
### SERVICE BOX CONSTRUCTION/INSTALLATION DETAILS



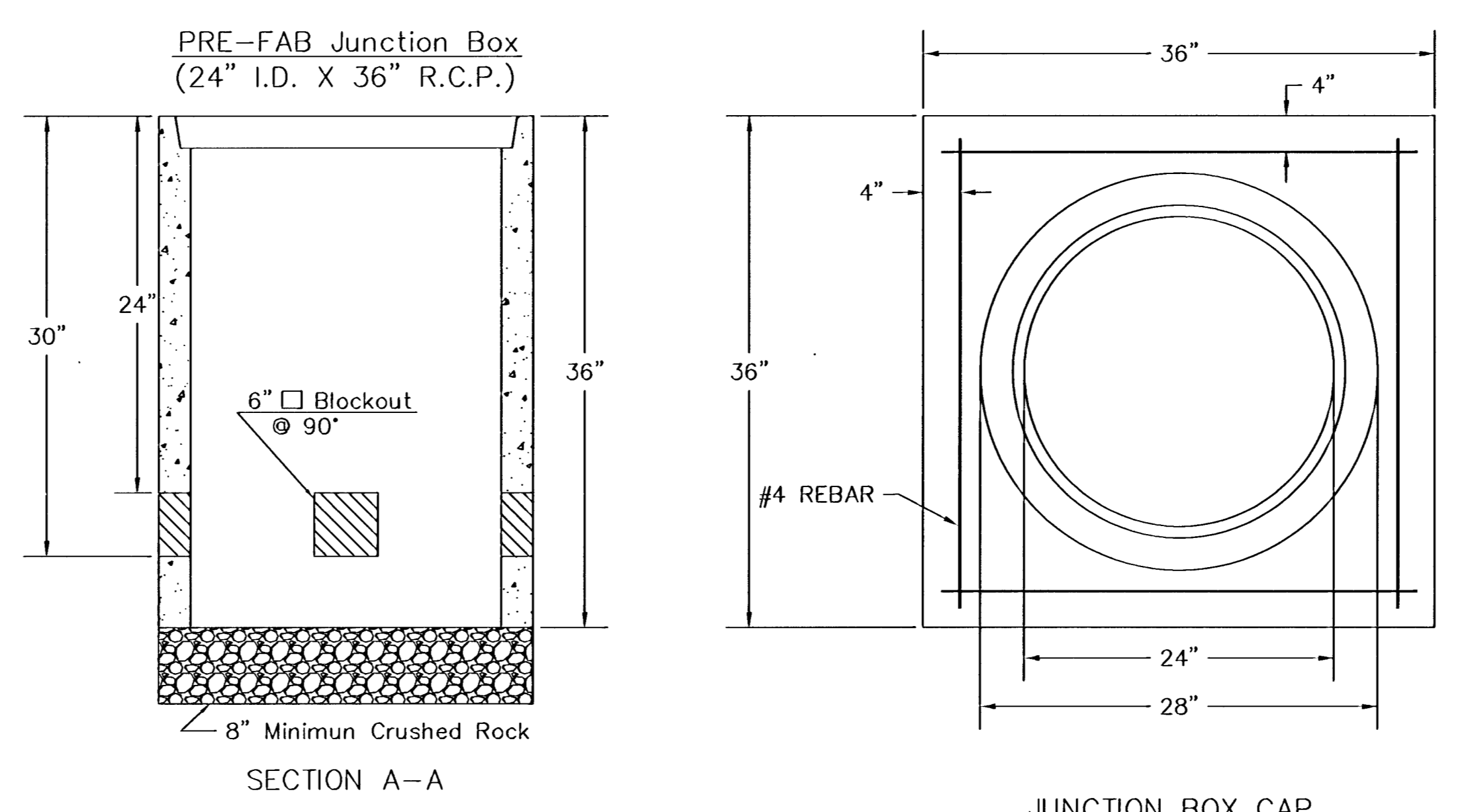
### CONDUIT/DETECTOR WIRE INSTALLATION DETAILS



### 170 CONTROLLER PAD DETAILS



### JUNCTION BOX DETAILS



### NOTES:

- SERVICE & JUNCTION BOX:
- CONDUIT CONNECTION TO BE FLUSH TO WITHIN 125 mm OF INSIDE FACE OF SIDE WALL, CONDUIT TO DRAIN INTO SERVICE BOX.
  - CONDUIT CONNECTIONS TO SERVICE BOX SHALL BE TERMINATED WITH PLASTIC CABLE BUSHING.
  - CONDUIT SHALL BE SEALED WITH APPROVED SEALER AT INSIDE WALL FACE.
  - ALL SERVICE & JUNCTION BOXES TO HAVE 200 mm OF CRUSHED ROCK.
- TRENCHING:
- DEPTH TO BE 30" MINIMUM WITH ROCK & STUBBLE FREE BACKFILL TO SERVE AS BEDDING MATERIAL. MAINTAIN MINIMUM CONDUIT DEPTH IN TRENCH.
  - BACKFILL TO BE COMPACTED IN 6" LOOSE LIFTS BY HAND OR MECHANICAL TAMPING TO A 95% STANDARD DENSITY.
- CONDUIT:
- SLOPE CONDUIT TO DRAIN AS DIRECTED BY THE ENGINEER.
  - 3" RIGID STEEL CONDUIT BTWN. SERVICE BOXES.  
1 1/4" " " BTWN. SERVICE & JUNCTION BOXES.  
3/4" " " BTWN. JUNCTION BOXES.  
3/4" " " BTWN. JUNCTION BOX & DETECTOR LOOP SAW CUT

\*\*SEE SERVICE BOX INSTALLATION FOR RING & COVER DETAILS.

REV. DATE	COMMENTS	INT

PROJECT DESCRIPTION  
SERVICE/JUNCTION BOX, CONTROLLER PAD CONSTRUCTION/INSTALLATION DETAILS

PROJECT NUMBER

DRAWN BY: T.M. APPROVED BY: DATE: Apr. 96

CITY OF WICHITA DEPARTMENT OF PUBLIC WORKS

TRAFFIC ENGINEERING DIVISION WM. G. MCKINLEY P.E. TRAFFIC ENGINEER

SCALE NO SCALE D-6