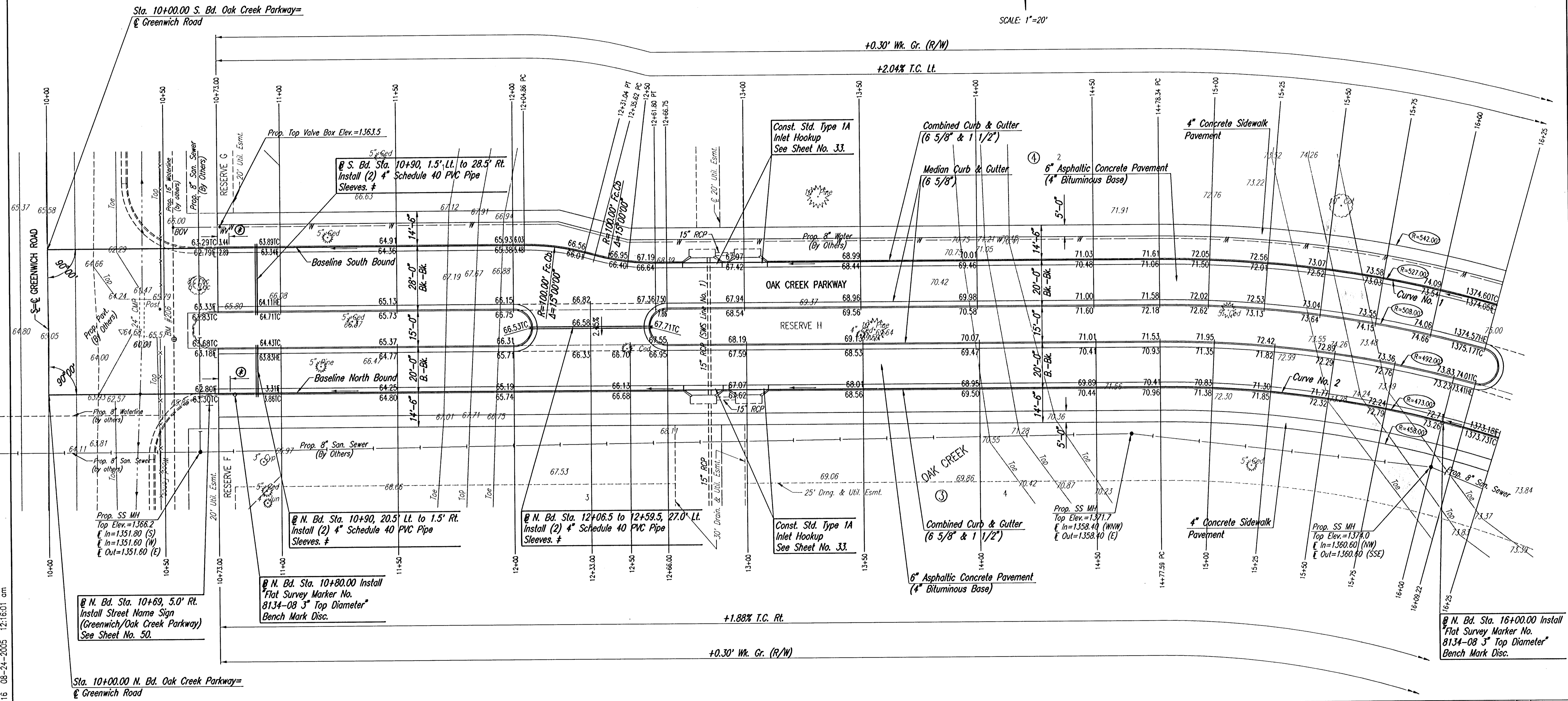


WATER VALVE BOX ELEVATIONS			
STREET	STATION	OFFSET	PROPOSED ELEVATION
OAK CREEK PARKWAY	@ S. Bd. 10+74.00	9.0' Lt.	1363.5

SCALE: 1"=20'



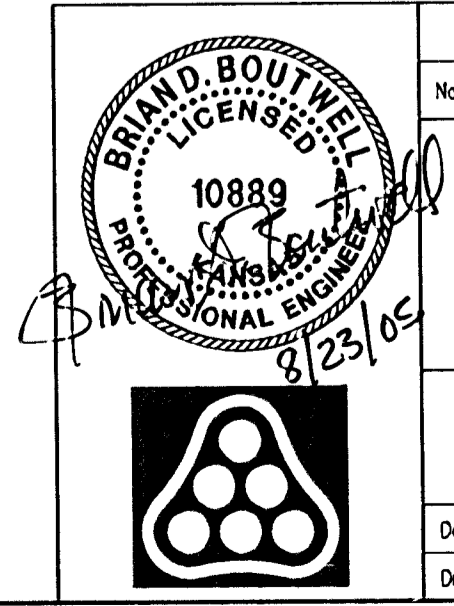
Sta. 10+00.00 S. Bd. Oak Creek Parkway=
Greenwich Road

Sta. 10+00.00 N. Bd. Oak Creek Parkway=
Greenwich Road

Note: Construction of Greenwich Rd. improvements (C.O.W. Proj. No. 472-8400*) may be in progress concurrently with construction of Oak Creek Parkway. The contractor for this project shall coordinate efforts as necessary with the contractor for the Greenwich Rd. project. In the event Oak Creek Parkway is completed prior to the adjacent intersection pavement, the contractor shall sufficiently barricade Oak Creek Parkway until a permanent connection is made. Temporary pavement hookup of Oak Creek Parkway to Greenwich Rd. is not required.

⑤ 5' TRANSITION FROM KDOT MODIFIED TYPE I COMBINED CURB & GUTTER TO COMBINED CURB AND GUTTER (6 5/8" & 1 1/2"). TO BE BID AND PAID FOR AS "COMBINED CURB AND GUTTER (6 5/8" & 1 1/2)".

* Sleeves to be 42" below top of curb. Each end of 4" PVC pipe sleeves shall be capped and marked with steel "T" posts or 2" dia. steel pipe a maximum of 12" above finished grade. Pipe, caps, markers, and installation thereof shall be Subsidiary to Median Comb. Curb & Gutter (6 5/8").



No.	Revision	By	Date

OAK CREEK - PHASE 1

OAK CREEK PARKWAY
N. Bd. & S. Bd. STA. 10+00 TO STA. 16+25
JAMES L. ARMOUR, P.E. - CITY ENGINEER
CITY OF WICHITA PROJECT NO. 472-84209

Professional Engineering Consultants, P.A.
303 S. TOPEKA • WICHITA, KANSAS 67202
316-262-2691 • FAX 316-262-3003

Designed by	BDB, BLB	Job No.	35-04688-000	Sheet	6 of 86
Drawn by	BJS	Date	October 2004		

DSNR: BLB OPER: BJS SCALE: 1"=20.00
 01/2004 (04688)000 (04688-1000-C-STR10-16 08-24-2005 12:16:01 am