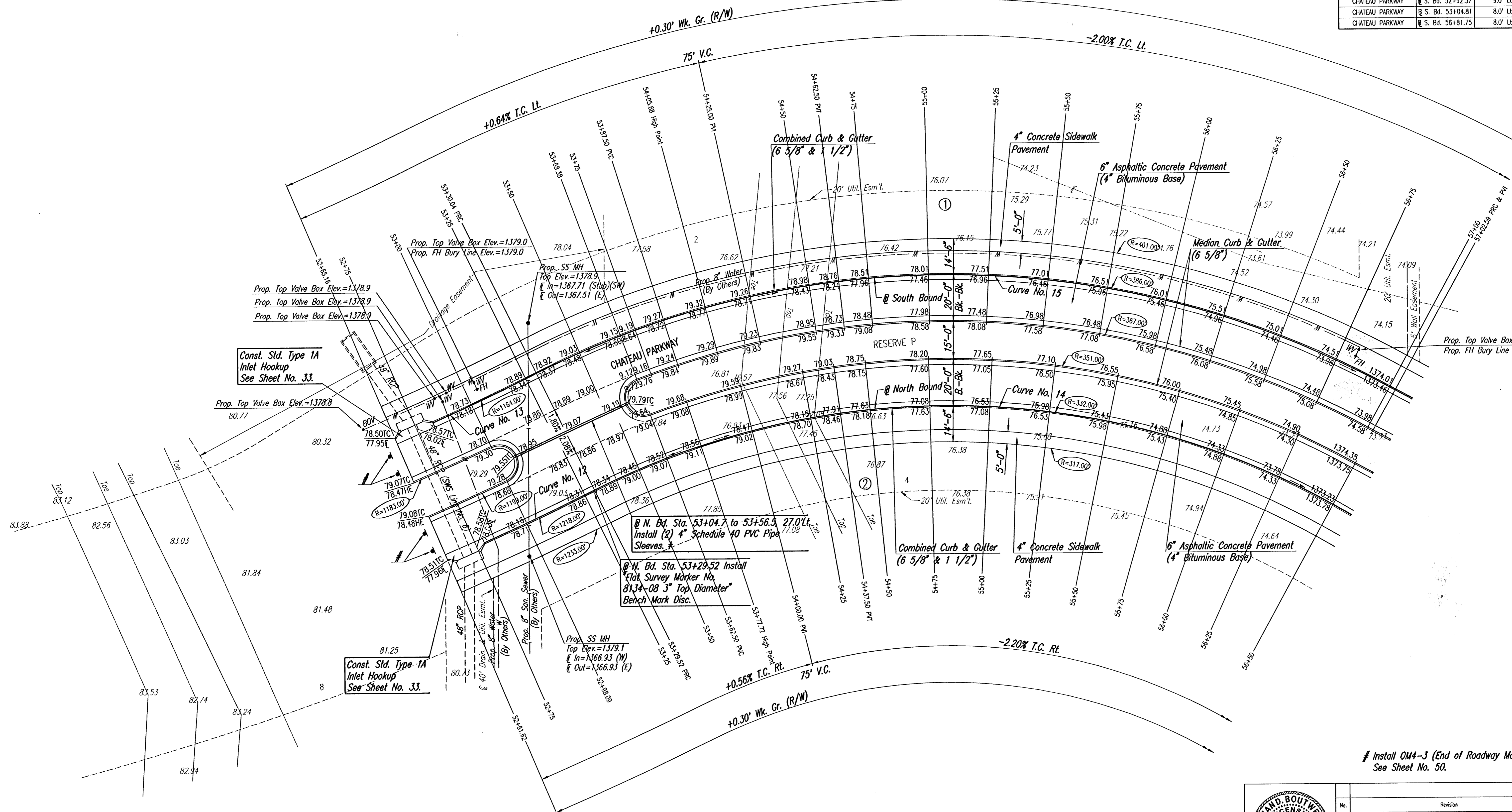


WATER VALVE BOX ELEVATIONS			
STREET	STATION	OFFSET	PROPOSED ELEVATION
CHATEAU PARKWAY	@ S. Bd. 52+54.43	9.0' Lt.	1378.8
CHATEAU PARKWAY	@ S. Bd. 52+87.03	9.0' Lt.	1378.9
CHATEAU PARKWAY	@ S. Bd. 52+89.52	6.0' Lt.	1378.9
CHATEAU PARKWAY	@ S. Bd. 52+92.37	9.0' Lt.	1378.9
CHATEAU PARKWAY	@ S. Bd. 53+04.81	8.0' Lt.	1379.0
CHATEAU PARKWAY	@ S. Bd. 56+81.75	8.0' Lt.	1374.0



Const. Std. Type 1A Inlet Hookup See Sheet No. 33.

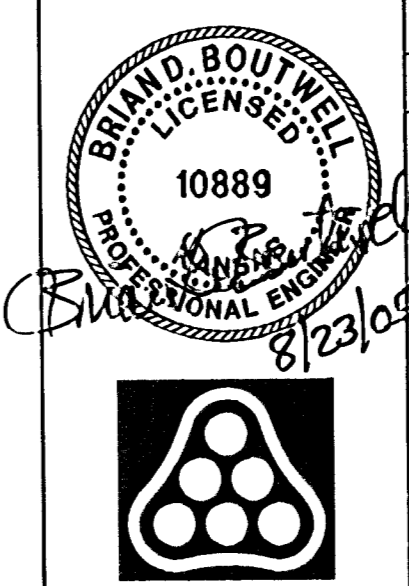
Const. Std. Type 1A Inlet Hookup See Sheet No. 33.

@ N. Bd. Sta. 53+04.7 to 53+56.9 27.0' Lt. Install (2) 4" Schedule 40 PVC Pipe Sleeves.

@ N. Bd. Sta. 53+29.52 Install Flat Survey Marker No. 8134-08 3" Top Diameter Bench Mark Disc.

Install OMA-3 (End of Roadway Marker) See Sheet No. 50.

* Sleeves to be 42" below top of curb. Each end of 4" PVC pipe sleeves shall be capped and marked with steel "T" posts or 2" dia. steel pipe a maximum of 12" above finished grade. Pipe, caps, markers, and installation thereof shall be Subsidiary to Median Comb. Curb & Gutter (6 5/8").



Revision		By	Date
OAK CREEK - PHASE 1			
CHATEAU PARKWAY			
@ N. Bd. STA. 52+61.62 TO 56+50/@ S. Bd. STA. 52+65.16 TO 57+00			
JAMES L. ARMOUR, P.E. - CITY ENGINEER			
CITY OF WICHITA PROJECT NO. 472-84209			
Professional Engineering Consultants, P.A.			
303 S. TOPEKA • WICHITA, KANSAS 67202			
316-262-2691 • FAX 316-262-3003			
Designed by	BDB, BLB	Job No.	35-04688-000
Drawn by	BJS	Date	October 2004
			Sheet 11 of 86