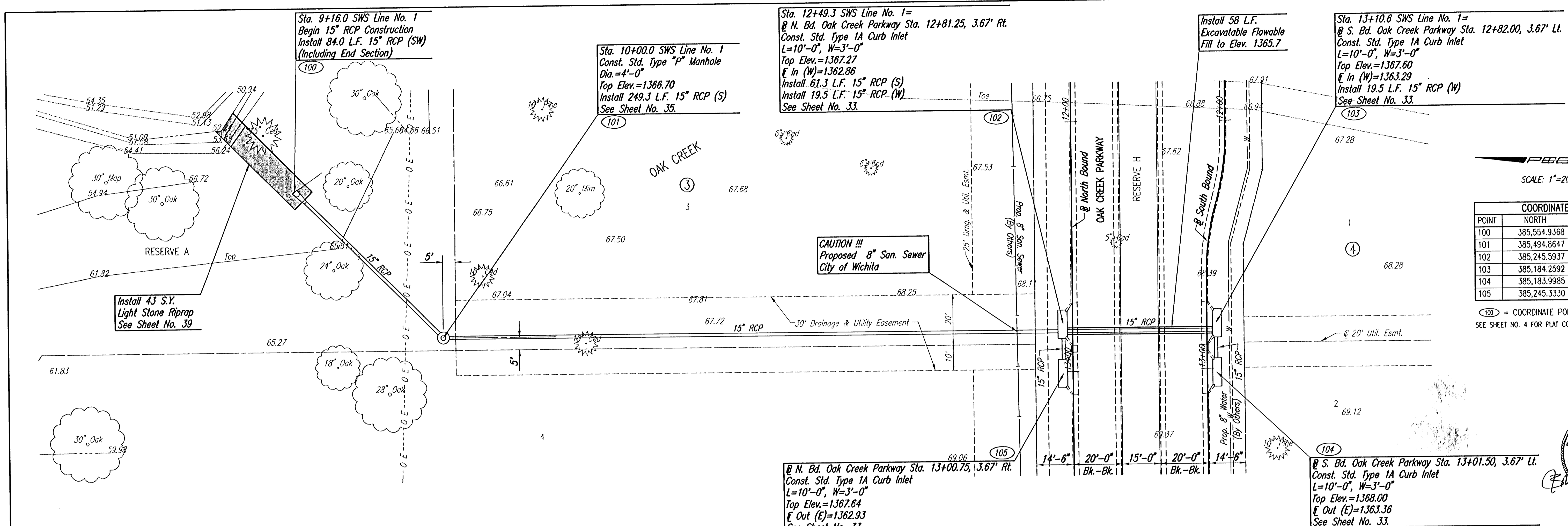


BY: \_\_\_\_\_ DATE: \_\_\_\_\_  
 CHECKED: \_\_\_\_\_  
 PLAN

BY: \_\_\_\_\_ DATE: \_\_\_\_\_  
 CHECKED: \_\_\_\_\_  
 PROFILE

DSNR: BLB OPER: EJS SCALE: 1=20.00  
 Q:\2004\04688\000\04688-000-C-SWSLINE1 08-23-2005 09:05:12 am



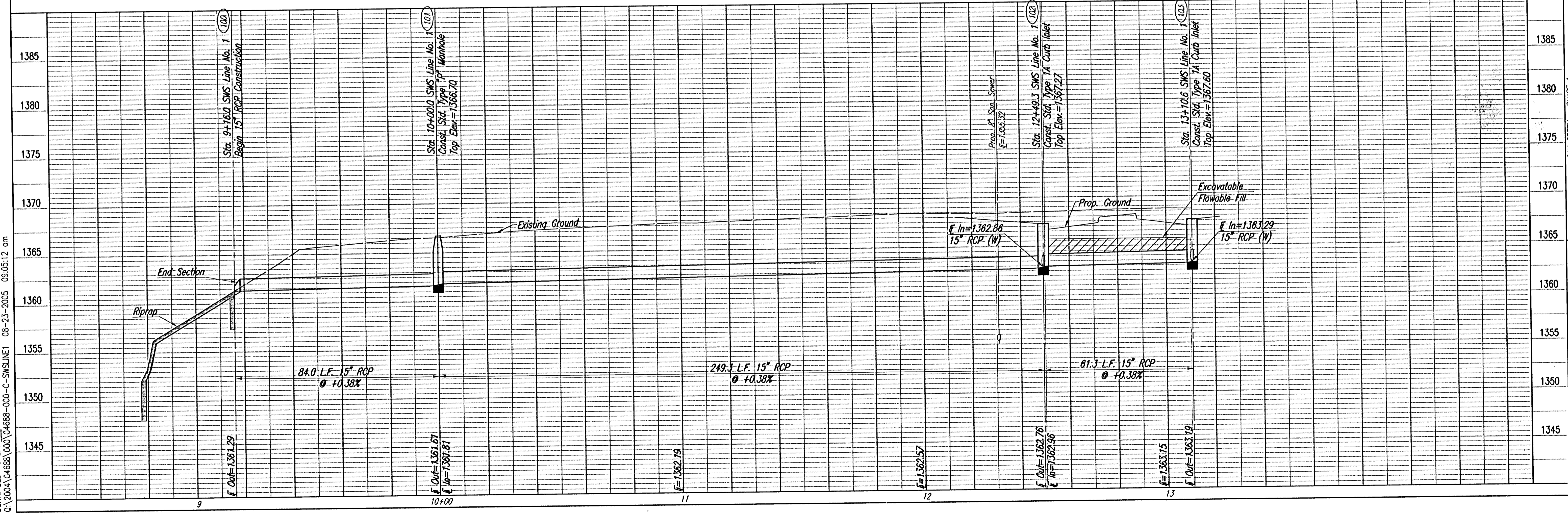
**CAUTION !!!**  
 Proposed 8" San. Sewer  
 City of Wichita

SCALE: 1"=20'

COORDINATE LIST		
POINT	NORTH	EAST
100	385,554.9368	2,373,879.6265
101	385,494.8647	2,373,820.9124
102	385,245.5937	2,373,826.9982
103	385,184.2592	2,373,827.8182
104	385,183.9985	2,373,808.3156
105	385,245.3330	2,373,807.4957

(100) = COORDINATE POINT NO.  
 SEE SHEET NO. 4 FOR PLAT COORDINATES

BLAND, BOUTWELL  
 10889  
 PROFESSIONAL ENGINEER  
 8/23/05



OAK CREEK - PHASE 1  
**SWS LINE NO. 1**  
 JAMES L. ARMOUR, P.E. - CITY ENGINEER  
 CITY OF WICHITA PROJECT NO. 472-86209  
 Professional Engineering Consultants, P.A.  
 303 S. TORSEA, WICHITA, KANSAS 67202  
 316-268-2691 • FAX 316-268-3666  
 Designed By: EDB, BLB Job No.: 35-04688-000 Date: OCTOBER 2004  
 Drawn By: BUS  
 Sheet 21 of 86