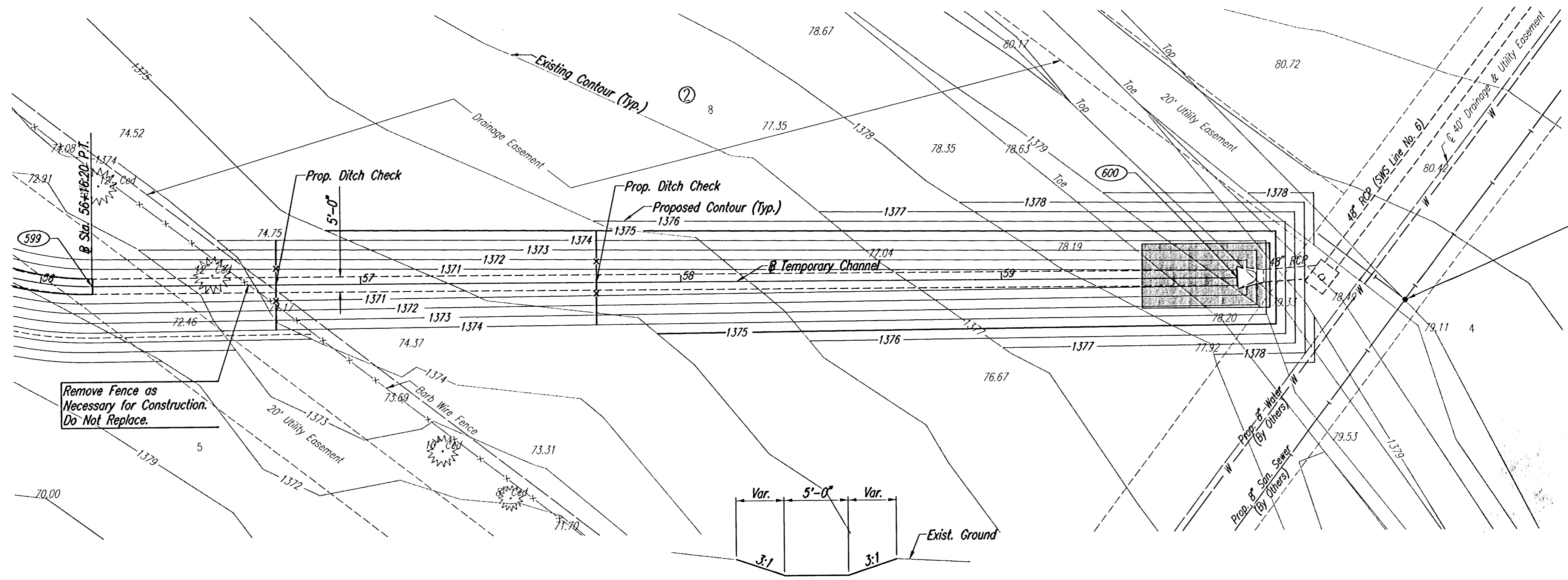
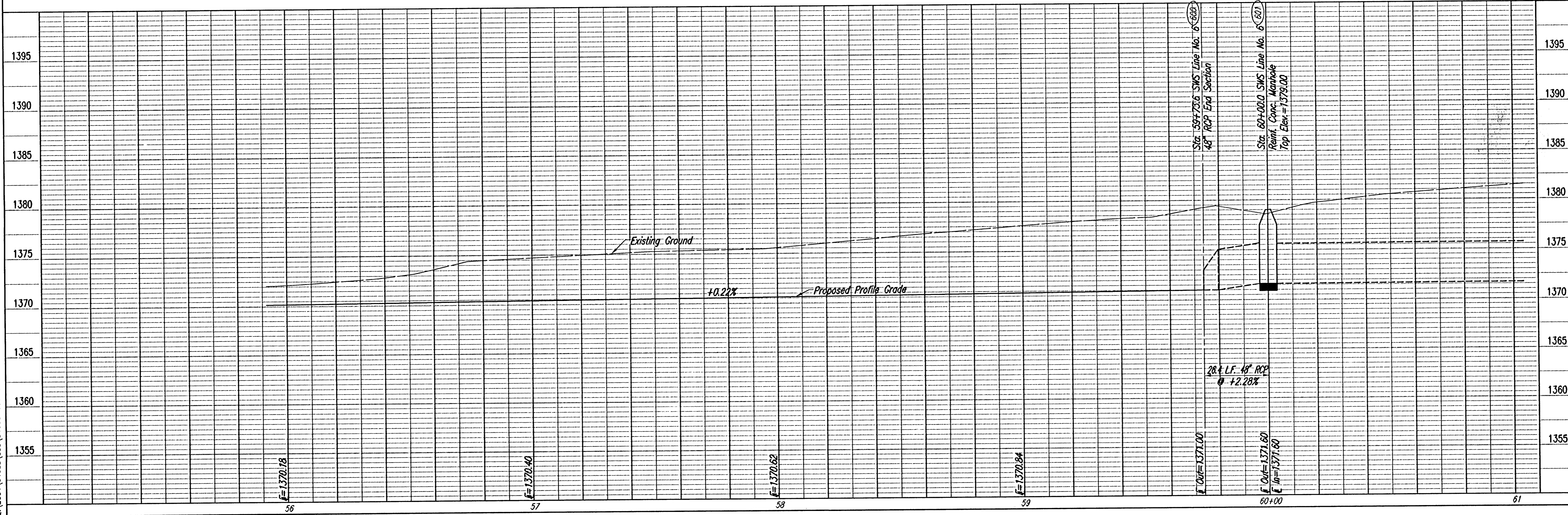


PLAN	CHECKED	CHECKED
BY		
DATE		

PROFILE	CHECKED	CHECKED
BY		
DATE		

DSMP: BLB OPER: BUS SCALE: 1"=20.00
 C:\2004\04688\000\04688-000-C-CHANNEL\56-60 08-23-2005 08:58:14 am



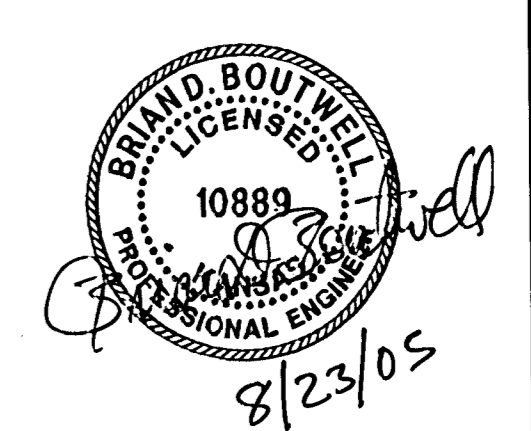
TYPICAL CHANNEL SECTION

SCALE: 1"=20'

COORDINATE LIST		
POINT	NORTH	EAST
599	386,300.0547	2,372,802.4752
600	386,581.9143	2,372,582.7248

599 = COORDINATE POINT NO.
 SEE SHEET NO. 3 FOR PLAT COORDINATES

Prop. SS MH
 Top Elev.=1379.6
 E In=1364.85 (Stub)(S)
 E In=1364.65 (W)
 E Out=1364.65 (E)



OKC CREEK - PHASE 1
TEMPORARY CHANNEL (EAST)
 STA. 57+00 TO 59+73.6
 JAMES L. ARNOUR, P.E. - CITY ENGINEER
 CITY OF WICHITA PROJECT NO. 472-94209

Professional Engineering Consultants, P.A.
 303 S. TOPKAWA • WICHITA, KANSAS 67202
 316-262-2491 • FAX 316-262-3003
 Job No. 35-04688-000 Date October 2004
 Drawn By: BUS
 Designed By: BDB, BLB