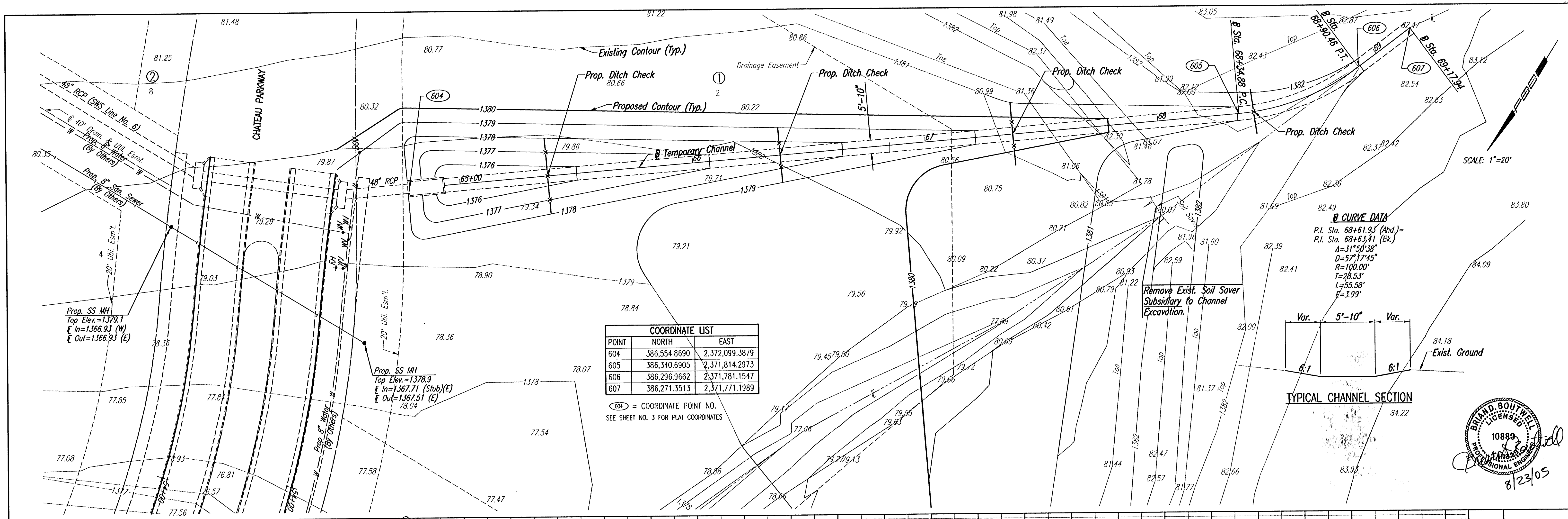


PLAN
 CHECKED
 CHECKED
 BY
 DATE

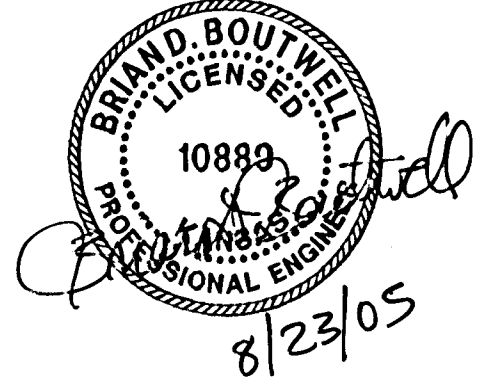
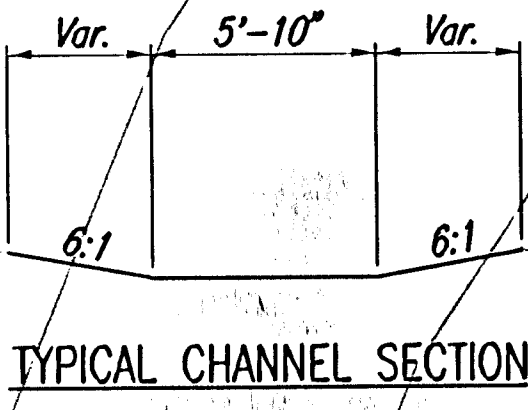


COORDINATE LIST

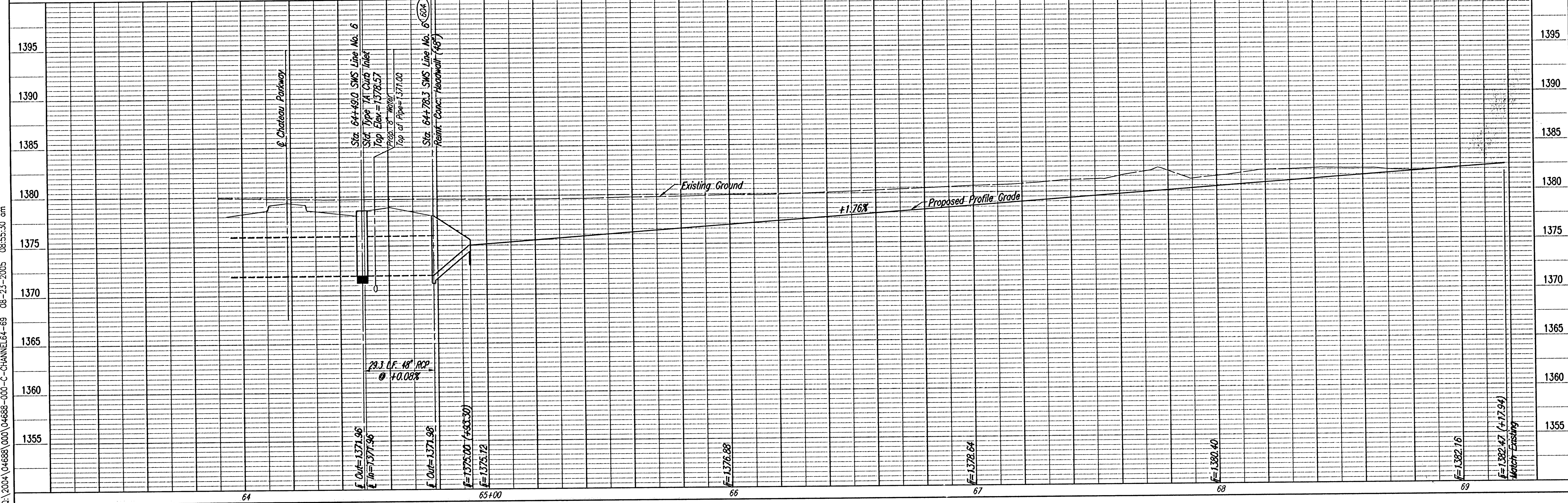
POINT	NORTH	EAST
604	386,554.8690	2,372,099.3879
605	386,340.6905	2,371,814.2973
606	386,296.9662	2,371,781.1547
607	386,271.3513	2,371,771.1989

604 = COORDINATE POINT NO.
 SEE SHEET NO. 3 FOR PLAT COORDINATES

CURVE DATA
 P.I. Sta. 68+61.93 (Abd.)=
 P.I. Sta. 68+63.41 (Bk.)
 $\Delta = 31^\circ 50' 38''$
 $D = 57^\circ 17' 45''$
 $R = 100.00'$
 $L = 28.53'$
 $E = 3.99'$



PROFILE
 CHECKED
 CHECKED
 BY
 DATE



OAK CREEK - PHASE 1

TEMPORARY CHANNEL (WEST)
 STA. 64+87.00 TO STA. 68+98.76
 JAMES L. ARMOUR, P.E. - CITY ENGINEER
 CITY OF WICHITA PROJECT NO. 477-64209

Professional Engineering Consultants, P.A.
 303 S. TOPEKA - WICHITA, KANSAS 67202
 316-262-2691 • FAX 316-262-3003

Designed By: BDB, BLB
 Drawn By: B.S.
 Job No. 35-04688-000
 Date: October 2004

Sheet 31 of 86