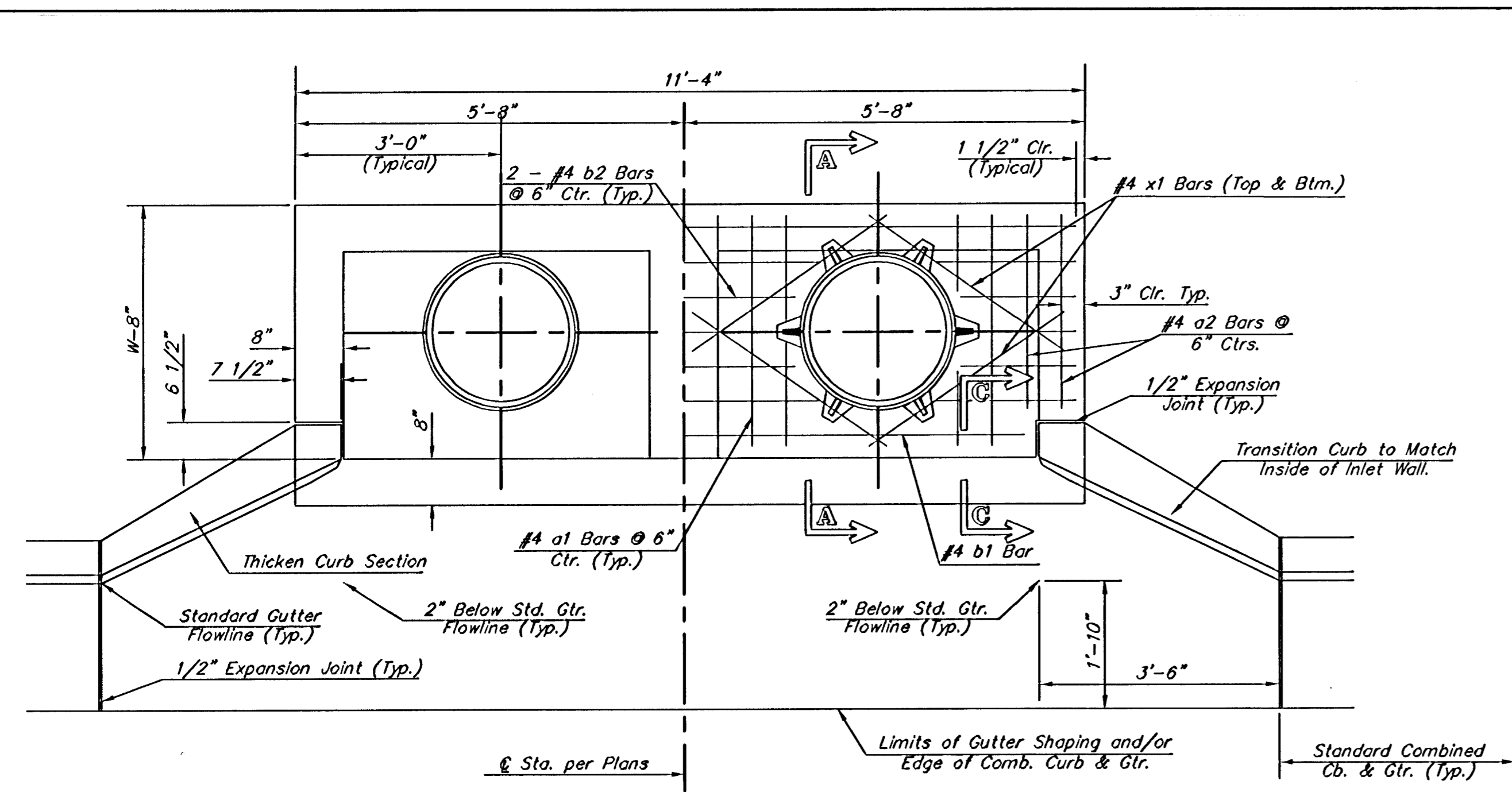
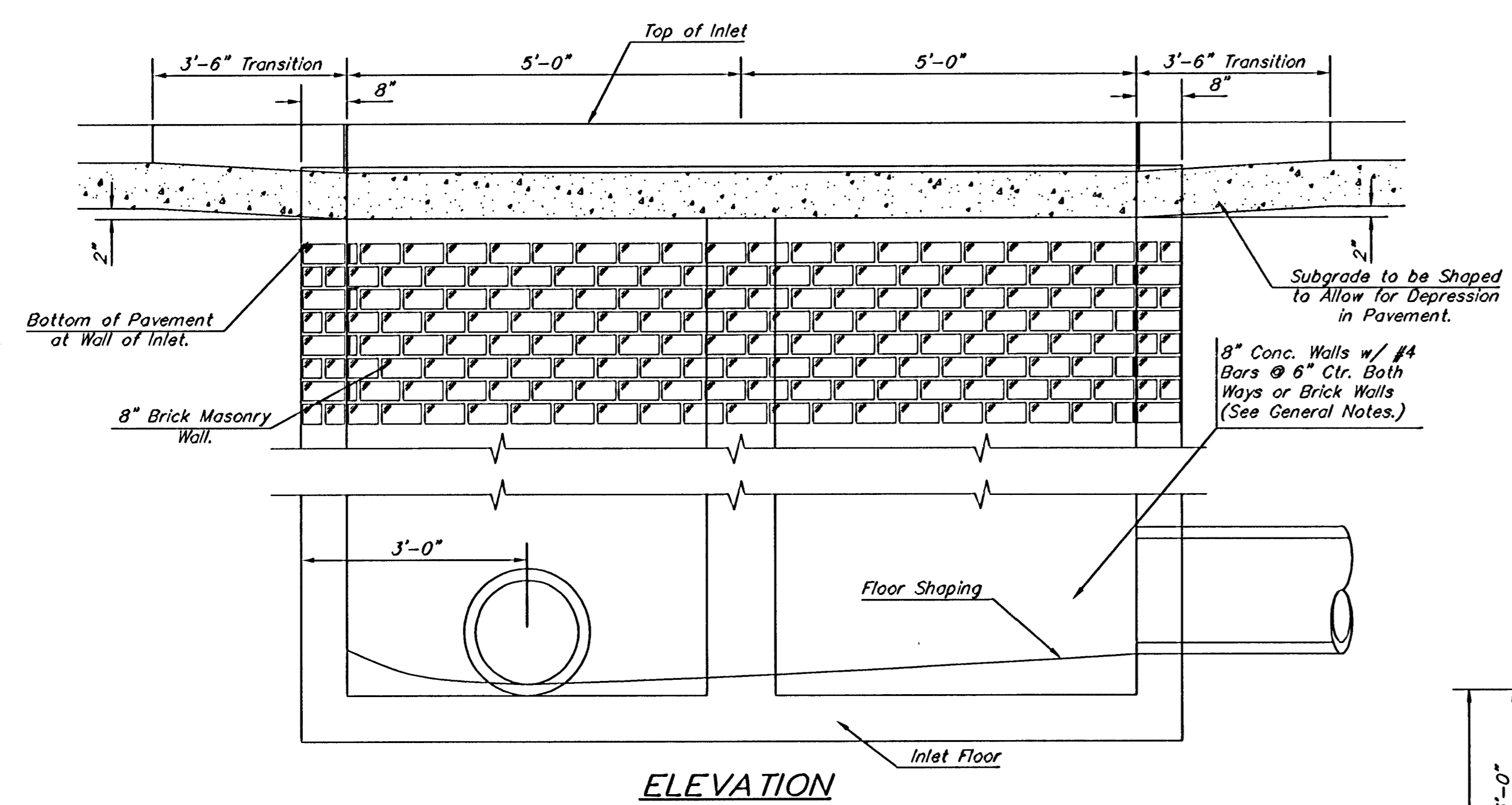


DSNR: CITY OPER. BUS SCALE: 1=1.00
 01/2004/04688/000/04688-1000-C-TYP.A-2C 08-23-2005 08:54:27 am

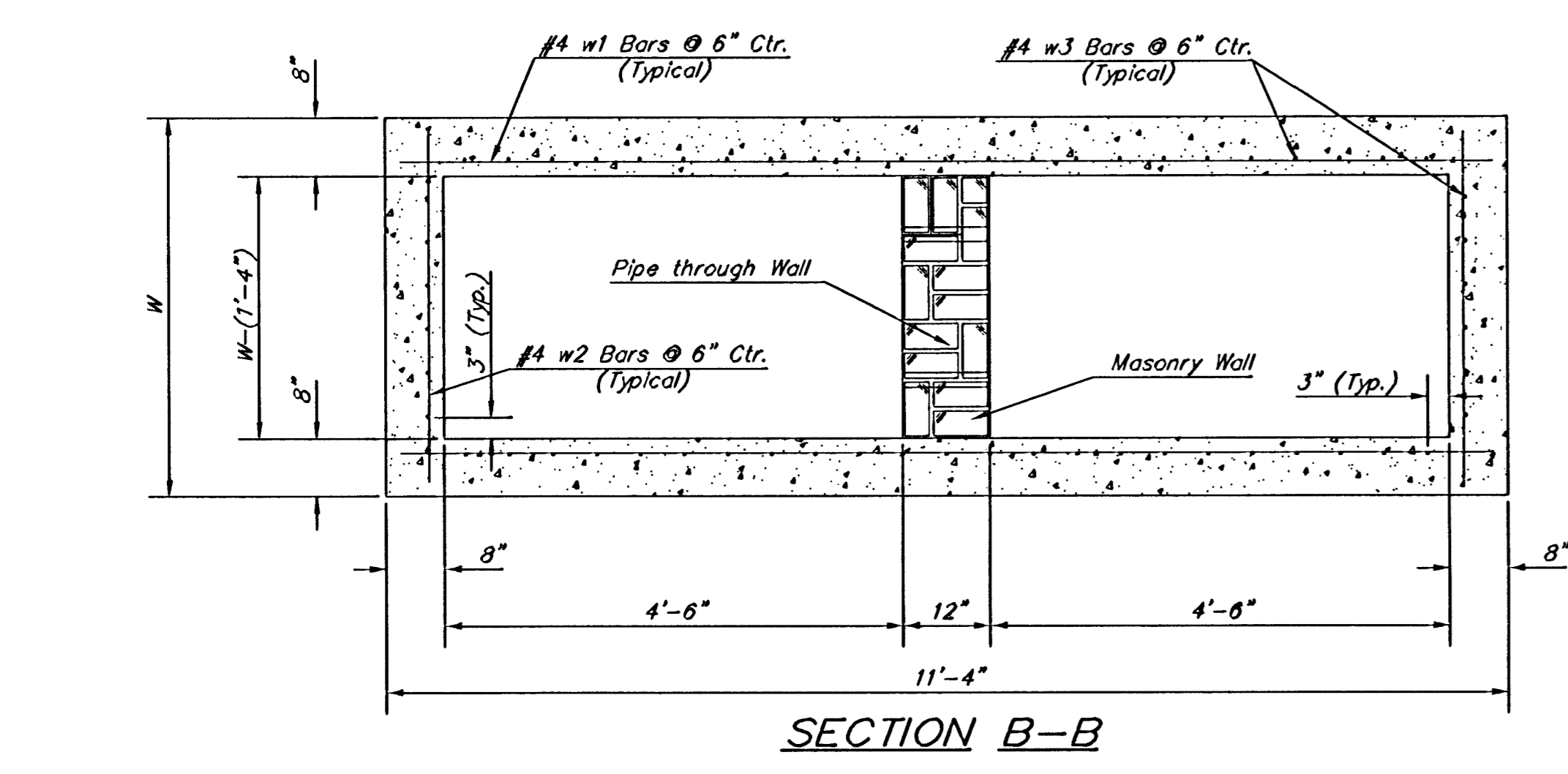


PLAN

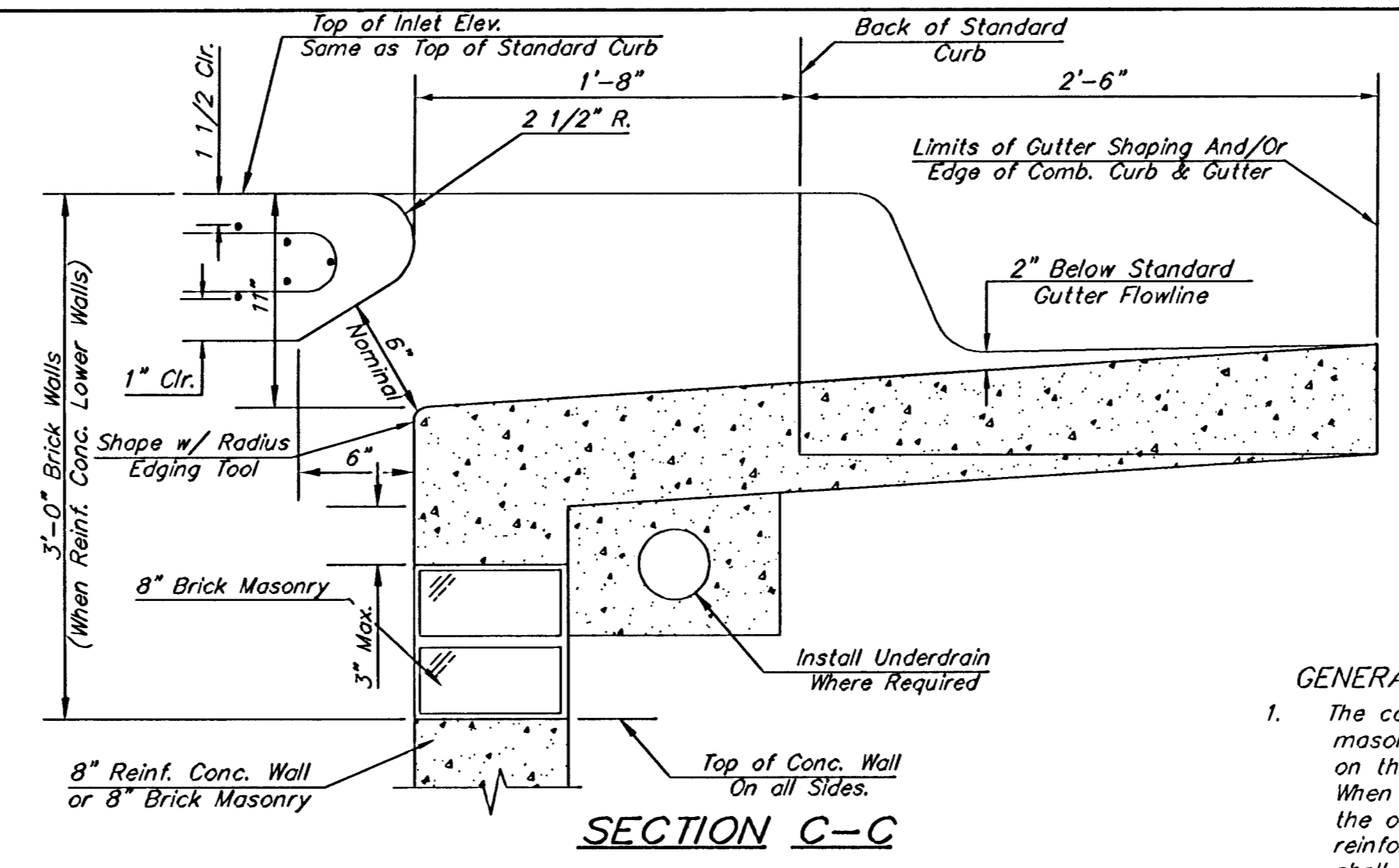
*Left Side Shown Without Slab Reinforcing
 Right Side Shown With Slab Reinforcing



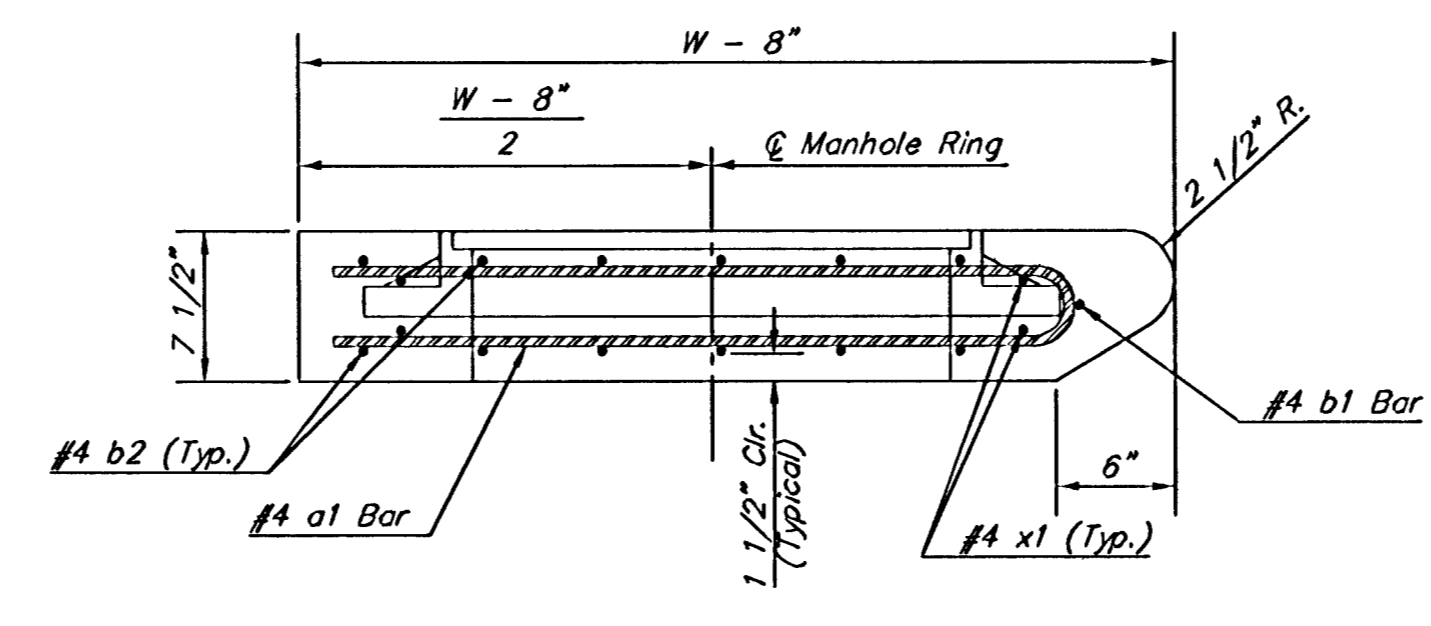
ELEVATION



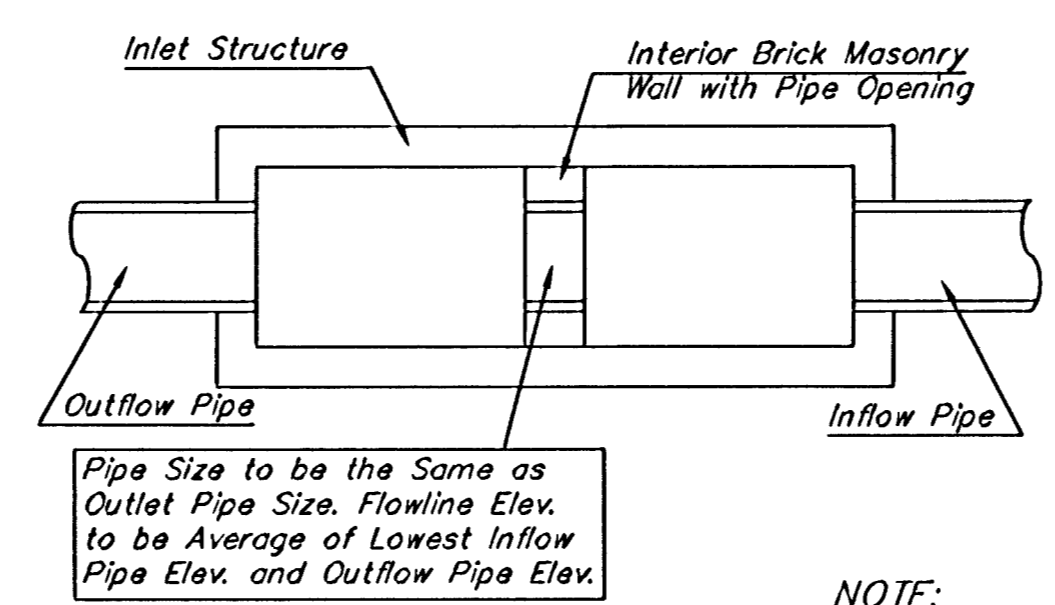
SECTION B-B



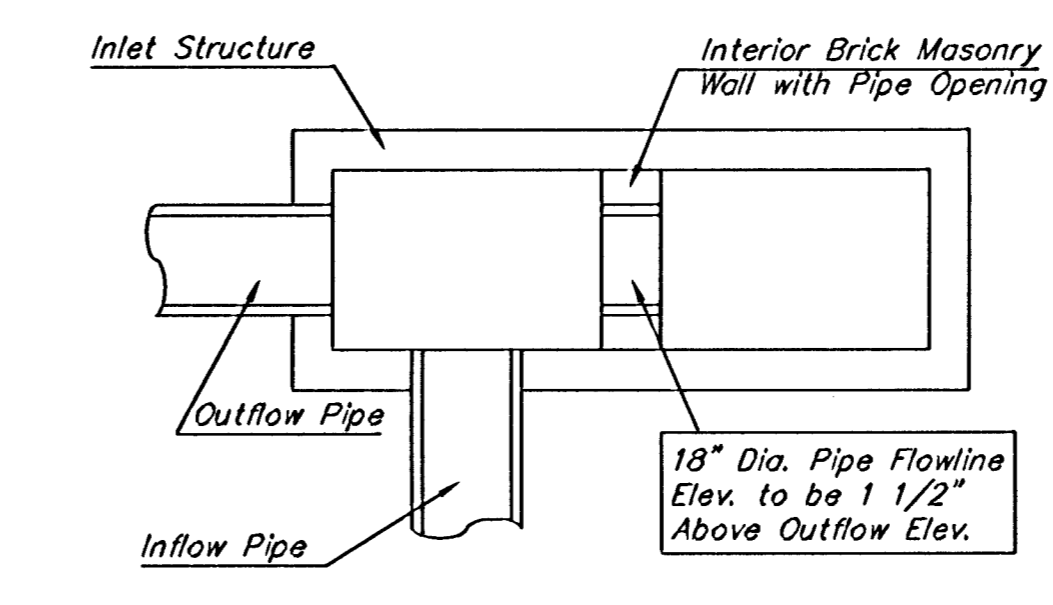
SECTION C-C



SECTION A-A

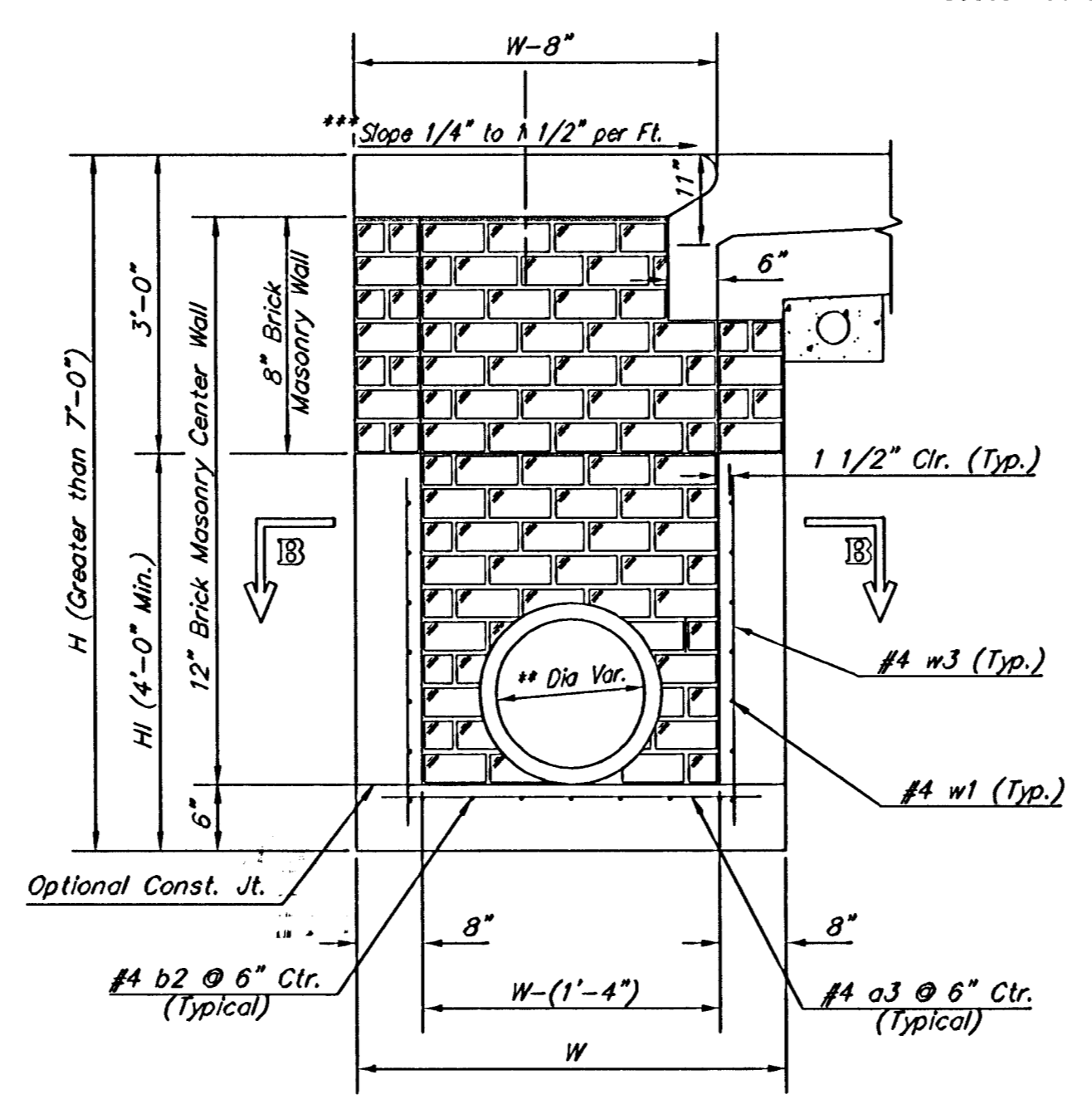


CASE I

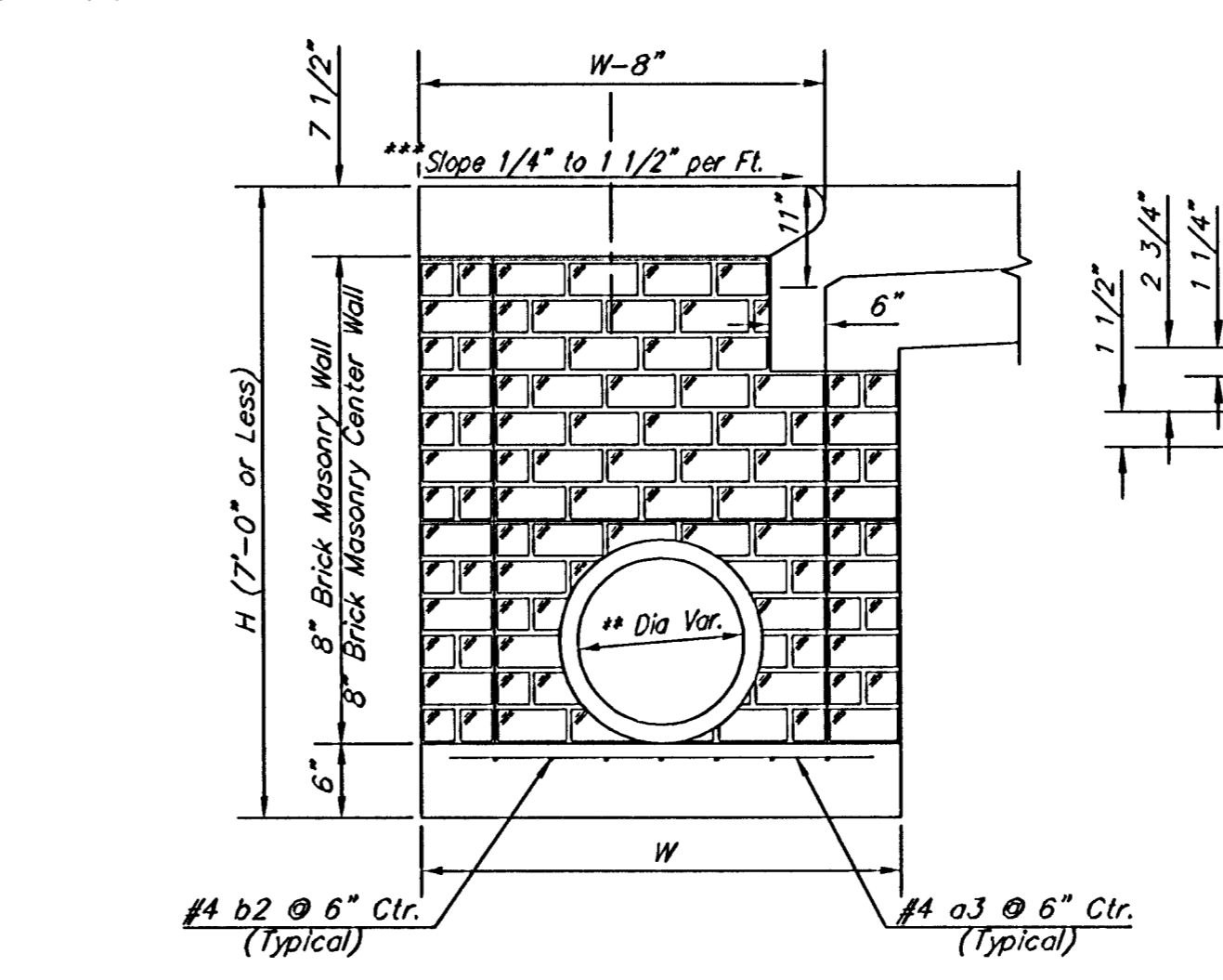


CASE II

NOTE:
 Center Wall Pipe Size shall be as Specified in Inlet Construction Notes on the Plan/Profile Sheets for those Cases not Shown Here.



TYPICAL INLET SECTION AT CENTER WALL
 (Reinforced Concrete Walls)



TYPICAL INLET SECTION AT CENTER WALL
 (Masonry Walls)

NOTES:
 ** A center wall opening shall be provided by means of a section of reinforced concrete pipe. See Case I and Case II above.
 *** Slope of inlet tops to match sidewalk or parking slopes within limits indicated

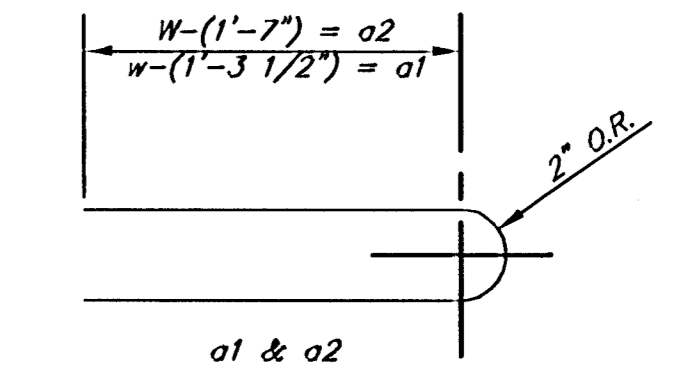
PRECAST SLAB AND FLOOR REINFORCING

		W = 3'-0"		W = 4'-0"		W = 5'-0"		W = 6'-0"		W = 7'-0"	
MARK	SIZE	NO.	LENGTH	NO.	LENGTH	NO.	LENGTH	NO.	LENGTH	NO.	LENGTH
a1	#4	13	6'-7"	13	8'-7"	13	10'-7"	13	12'-7"	13	14'-7"
a2	#4	4	6'-0"	4	8'-0"	4	10'-0"	4	12'-0"	4	14'-0"
a3	#4	23	4'-1"	23	5'-1"	23	6'-1"	23	7'-1"	23	8'-1"
b1	#4	1	9'-9"	1	9'-9"	1	9'-9"	1	9'-9"	1	9'-9"
b2	#4	23	11'-1"	29	11'-1"	35	11'-1"	41	11'-1"	47	11'-1"
x1	#4	16	3'-10"	16	4'-2"	16	4'-6"	16	4'-10"	16	5'-2"

WALL REINFORCING

		W = 3'-0"		W = 4'-0"		W = 5'-0"		W = 6'-0"		W = 7'-0"	
MARK	SIZE	NO.	LENGTH	NO.	LENGTH	NO.	LENGTH	NO.	LENGTH	NO.	LENGTH
w1	#4	1	11'-1"	1	11'-1"	1	11'-1"	1	11'-1"	1	11'-1"
w2	#4	1	4'-1"	1	5'-1"	1	6'-1"	1	7'-1"	1	8'-1"
w3	#4	52	2	56	2	60	2	64	2	68	2

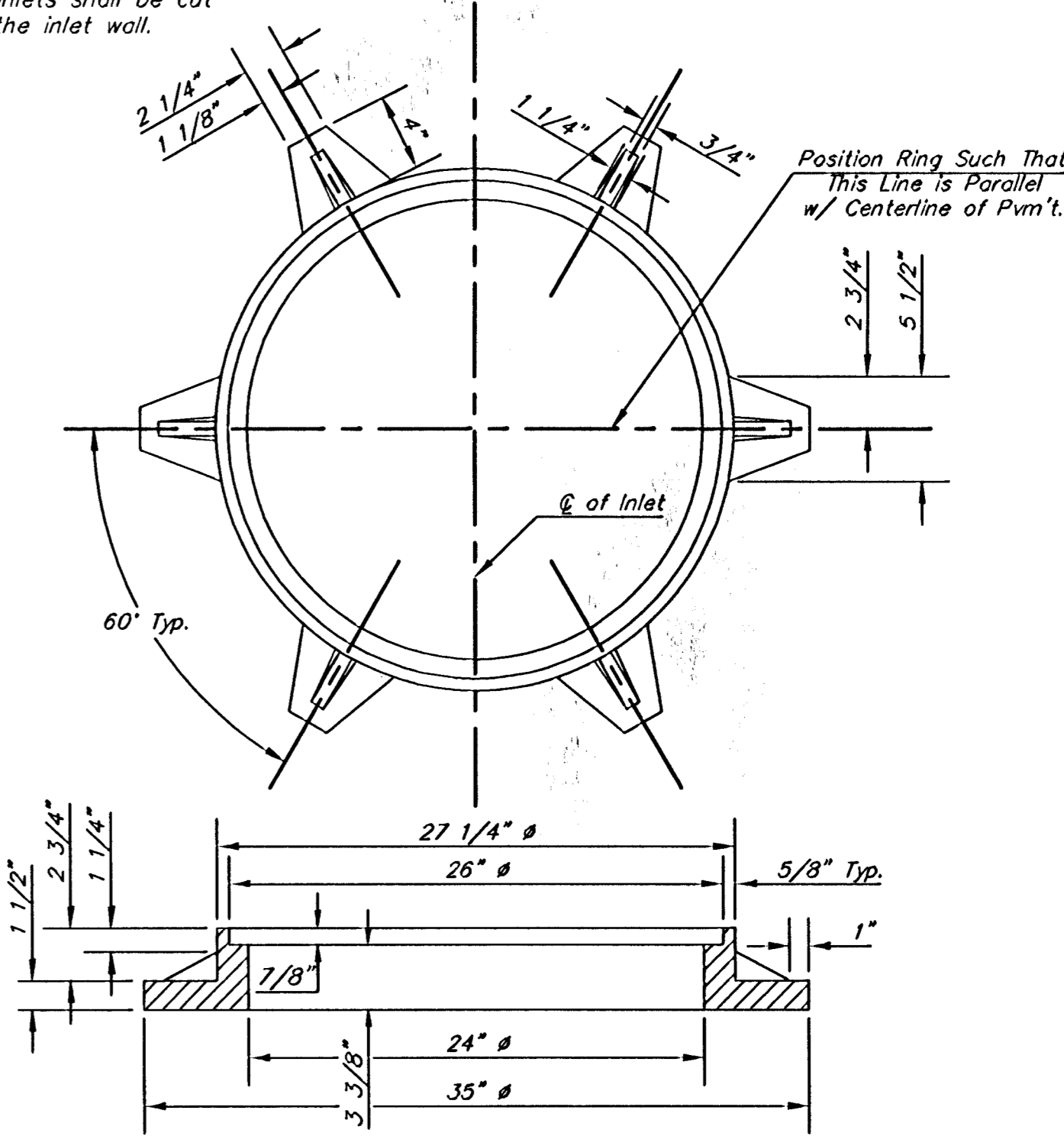
* Field Bend or Cut Reinforcing as Required for Clearance.
 ① 4 (H - 12') (H - 21') Rounded down to nearest 0.5'
 ② H - 3'



BENDING DIAGRAM

STANDARD CURB INLET PRECAST TOPS

W	PRE-CAST TOP SIZE	PIPE SIZE	CU. YD. CONC.
3'-0"	3'-8" 11'-4" 7 1/2"	21" & SMALLER	0.83±
4'-0"	4'-8" 11'-4" 7 1/2"	24" & 30"	1.09±
5'-0"	5'-8" 11'-4" 7 1/2"	36" & 42"	1.35±
6'-0"	6'-8" 11'-4" 7 1/2"	48" & 54"	1.61±
7'-0"	7'-8" 11'-4" 7 1/2"	60" & 66"	1.87±



MANHOLE RING AND COVER
 Weight = 180 lbs.

*See City of Wichita Standard Manhole Ring and Cover Detail Sheet for Cover Details to Be Used With Inlet Frame.



STANDARD TYPE 1-A CURB INLET 10'-0" OPENING

CITY ENGINEER
JAMES L. ARMOUR, P.E., L.S.

PROJECT NUMBER: 472-84209 OCA NUMBER: 785936 DATE: 08/2005

CITY ENGINEER'S OFFICE: CITY HALL - SEVENTH FLOOR, 455 NORTH MAIN STREET, WICHITA, KANSAS 67202-1820
 (316) 268-4500 (316) 268-4114 FAX

DESIGN: ABC DRAWN: DEF
 SHEET: 33 OF 86