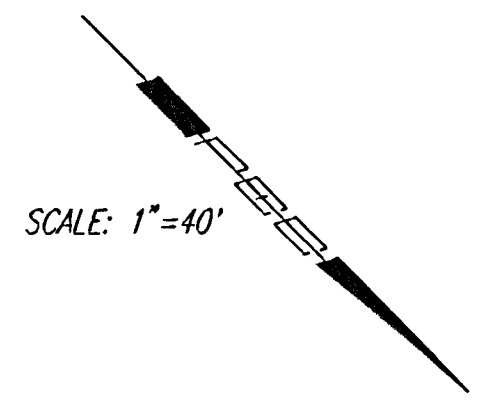
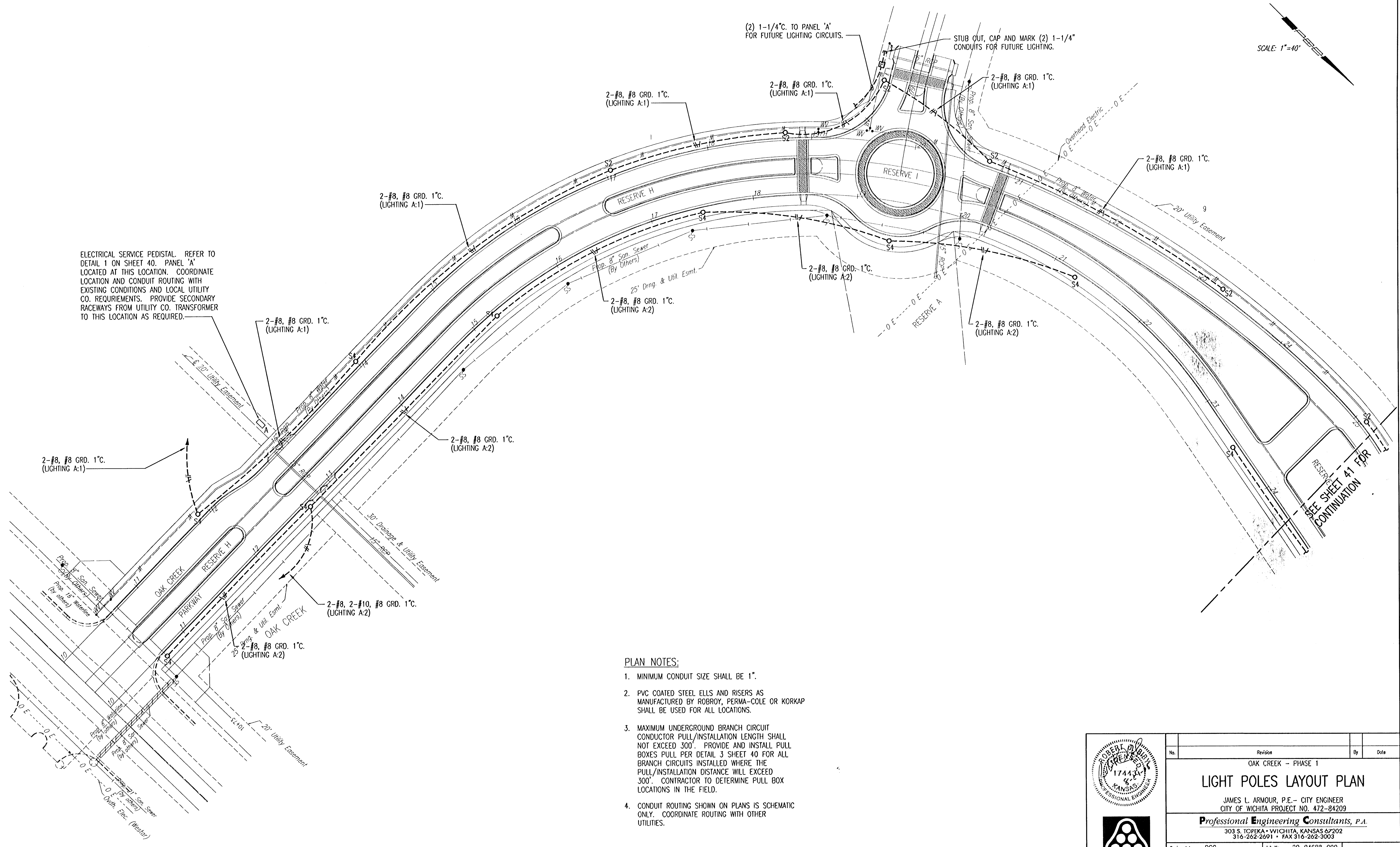


DSNR: DCG OPER: MOB SCALE: 1"=40.0000  
 E:\2004\04688\000\04688-000 SH1 42 ES LIC 08-24-2005 07:24:42 am



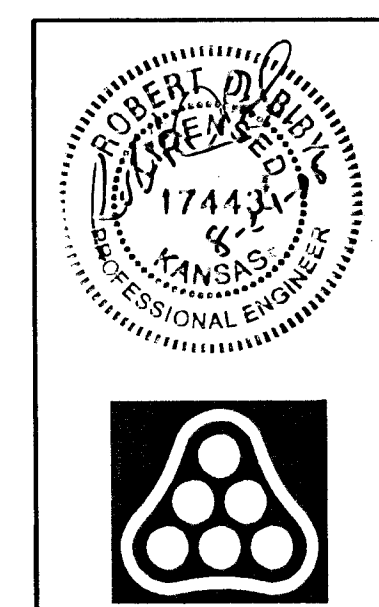
SCALE: 1"=40'



ELECTRICAL SERVICE PEDISTAL. REFER TO DETAIL 1 ON SHEET 40. PANEL 'A' LOCATED AT THIS LOCATION. COORDINATE LOCATION AND CONDUIT ROUTING WITH EXISTING CONDITIONS AND LOCAL UTILITY CO. REQUIREMENTS. PROVIDE SECONDARY RACEWAYS FROM UTILITY CO. TRANSFORMER TO THIS LOCATION AS REQUIRED.

- PLAN NOTES:**
1. MINIMUM CONDUIT SIZE SHALL BE 1".
  2. PVC COATED STEEL ELLS AND RISERS AS MANUFACTURED BY ROBROY, PERMA-COLE OR KORKAP SHALL BE USED FOR ALL LOCATIONS.
  3. MAXIMUM UNDERGROUND BRANCH CIRCUIT CONDUCTOR PULL/INSTALLATION LENGTH SHALL NOT EXCEED 300'. PROVIDE AND INSTALL PULL BOXES PER DETAIL 3 SHEET 40 FOR ALL BRANCH CIRCUITS INSTALLED WHERE THE PULL/INSTALLATION DISTANCE WILL EXCEED 300'. CONTRACTOR TO DETERMINE PULL BOX LOCATIONS IN THE FIELD.
  4. CONDUIT ROUTING SHOWN ON PLANS IS SCHEMATIC ONLY. COORDINATE ROUTING WITH OTHER UTILITIES.

RESERVE  
 SEE SHEET 41 FOR  
 CONTINUATION



No.	Revision	By	Date
	OAK CREEK - PHASE 1		
<b>LIGHT POLES LAYOUT PLAN</b>			
JAMES L. ARMOUR, P.E. - CITY ENGINEER CITY OF WICHITA PROJECT NO. 472-84209			
<b>Professional Engineering Consultants, P.A.</b> 303 S. TOPEKA • WICHITA, KANSAS 67202 316-262-2691 • FAX 316-262-3003			
Designed by	DCG	Job No.	20-04688-000
Drawn by	MOB	Date	August 2004
			Sheet 42 of 86