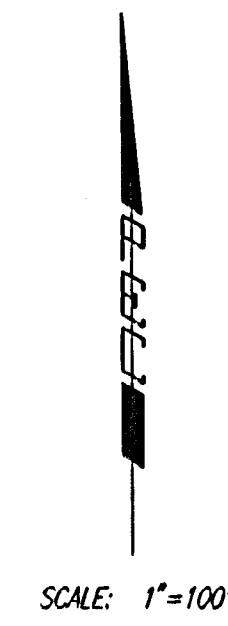
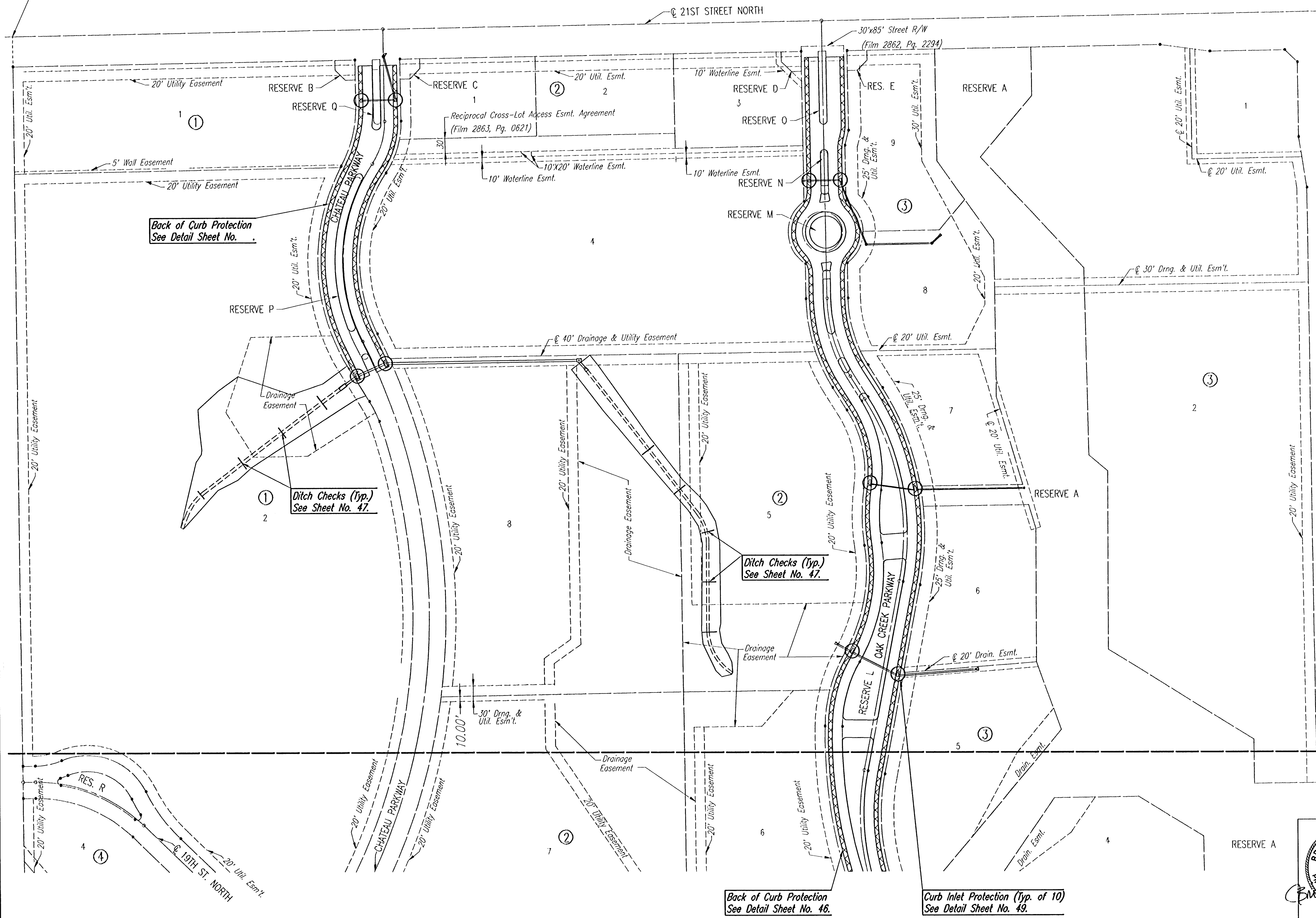


OAK CREEK

AN ADDITION TO WICHITA, SEDGWICK COUNTY, KANSAS

N.W. Cor. NE1/4
Sec. 9, T27S, R2E
Found #5 Bar w/ MKEC Cop

N.E. Cor. Sec. 9
T27S, R2E
Found Chiseled "+"
In Concrete



GENERAL NOTES

THE EROSION CONTROL DEVICES SHOWN ON THIS SHEET ARE CONSIDERED MINIMUM STANDARDS. WHENEVER SEDIMENT ENTERS THE STREETS, STORM SEWERS, DITCHES, OR PONDS, CONTRACTOR WILL INSTALL ADDITIONAL DEVICES, AS NEEDED, TO CORRECT THE PROBLEM.

THE EROSION CONTROL DEVICES SHOWN HEREON MUST BE IN PLACE AT ALL TIMES DURING CONSTRUCTION UNTIL SUCH TIME AS THE SITE IS REESTABLISHED WITH PAVING OR GRASS. TEMPORARY OR PERMANENT SEEDING AND MULCH WILL BE INSTALLED WHEN EARTHWORK ACTIVITIES CEASE IN AN AREA FOR 14 DAYS OR MORE.

BACK OF CURB PROTECTION: AS SHOWN ON CITY STANDARD DETAILS. THESE DEVICES MUST REMAIN IN PLACE UNTIL THE AREA BETWEEN THE CURB AND RIGHT-OF-WAY LINE HAS BEEN PERMANENTLY STABILIZED.

ANY MUD INADVERTENTLY TRACKED ONTO ANY STREET WILL BE CLEANED UP BY THE CONTRACTOR, AT THE END OF EACH DAY'S WORK.

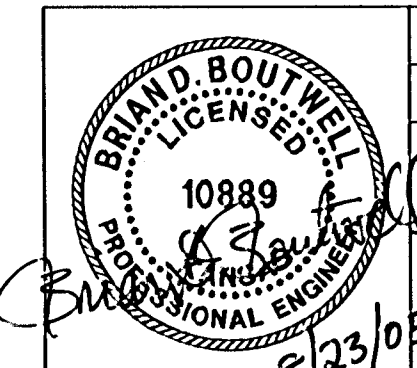
CONTRACTOR TO FURNISH A TRUCK WASH-OUT PIT TO BE PLACED AT A CONVENIENT LOCATION THAT DOES NOT CONFLICT WITH CONSTRUCTION. CONTRACTOR SHALL CLEAN OUT AND BACKFILL PIT PRIOR TO FINAL INSPECTION.

LEGEND

- Ditch Checks
- Curb Inlet Protection
- Back of Curb Protection

MATCH LINE

DSNR: BLB OPER: BJS SCALE: 1"=100.00
 G:\2004\04688\000\04688-000-C-EROSION\CTRL1 08-23-2005 08:42:42 am



No.	Revision	By	Date
	OAK CREEK - PHASE 1		
EROSION CONTROL (BMP) PLAN			
JAMES L. ARMOUR, P.E. - CITY ENGINEER CITY OF WICHITA PROJECT NO. 472-84209			
Professional Engineering Consultants, P.A. 303 S. TOPEKA • WICHITA, KANSAS 67202 316-262-2691 • FAX 316-262-3003			
Designed by	BDB, BLB	Job No.	35-04688-000
Drawn by	BJS	Date	October 2004
			Sheet 44 of 86

Back of Curb Protection
See Detail Sheet No. 46.

Curb Inlet Protection (Typ. of 10)
See Detail Sheet No. 49.