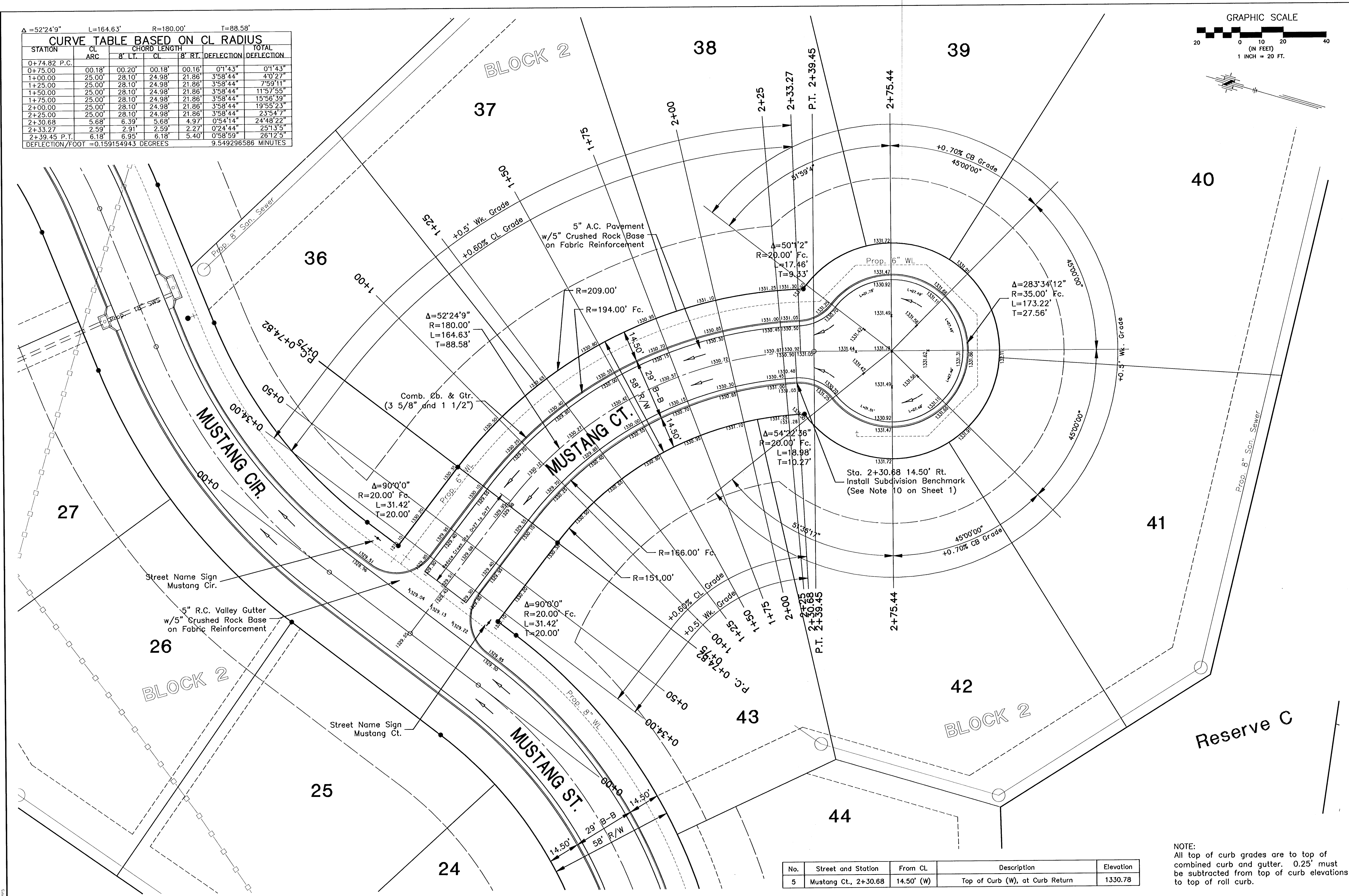
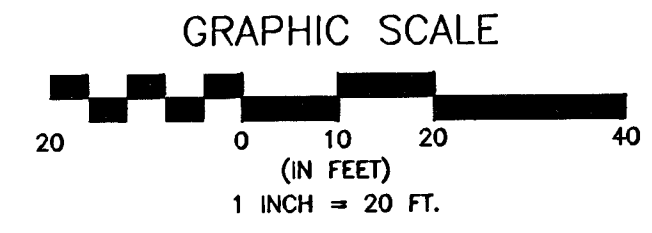


$\Delta = 52^{\circ}24'9''$   $L = 164.63'$   $R = 180.00'$   $T = 88.58'$

CURVE TABLE BASED ON CL RADIUS						
STATION	CL ARC	CHORD LENGTH		DEFLECTION	TOTAL DEFLECTION	
		8' LT.	8' RT.			
0+74.82 P.C.						
0+75.00	00.18'	00.20'	00.18'	0°11'43"	0°11'43"	
1+00.00	25.00'	28.10'	24.98'	21.86'	3°58'44"	4°07'27"
1+25.00	25.00'	28.10'	24.98'	21.86'	3°58'44"	7°59'11"
1+50.00	25.00'	28.10'	24.98'	21.86'	3°58'44"	11°57'55"
1+75.00	25.00'	28.10'	24.98'	21.86'	3°58'44"	15°56'39"
2+00.00	25.00'	28.10'	24.98'	21.86'	3°58'44"	19°55'23"
2+25.00	25.00'	28.10'	24.98'	21.86'	3°58'44"	23°54'07"
2+30.68	5.68'	6.39'	5.68'	4.97'	0°54'14"	24°48'22"
2+33.27	2.59'	2.91'	2.59'	2.27'	0°24'44"	25°13'5'
2+39.45 P.T.	6.18'	6.95'	6.18'	5.40'	0°58'59"	26°12'5'
DEFLECTION/FOOT = 0.159154943 DEGREES				9.549296586 MINUTES		



No.	Street and Station	From CL	Description	Elevation
5	Mustang Ct., 2+30.68	14.50' (W)	Top of Curb (W), at Curb Return	1330.78

NOTE:  
All top of curb grades are to top of combined curb and gutter. 0.25' must be subtracted from top of curb elevations to top of roll curb.

EQUESTRIAN ESTATES ADDITION - PHASE 2		STREET IMPROVEMENTS	
MUSTANG COURT		CITY OF WICHITA, KANSAS	
JAMES L. ARNDT, P.E., CITY ENGINEER		O.C.A. # 765989	
C.O.M. Project # 472-53430		O.C.A. # 765989	
POE & ASSOCIATES, INC.		CONSULTING ENGINEERS	
5940 E. Central, Suite 200 • Wichita, KS 67208-4242		Phone 316/685-4114 • FAX 316/685-4444	
Designed By: JMU/JPD		Drawn By: JPD	
Poe Job No.: 1694J		Date: January 2006	
Sheet		8 of 78	

SM-1-105