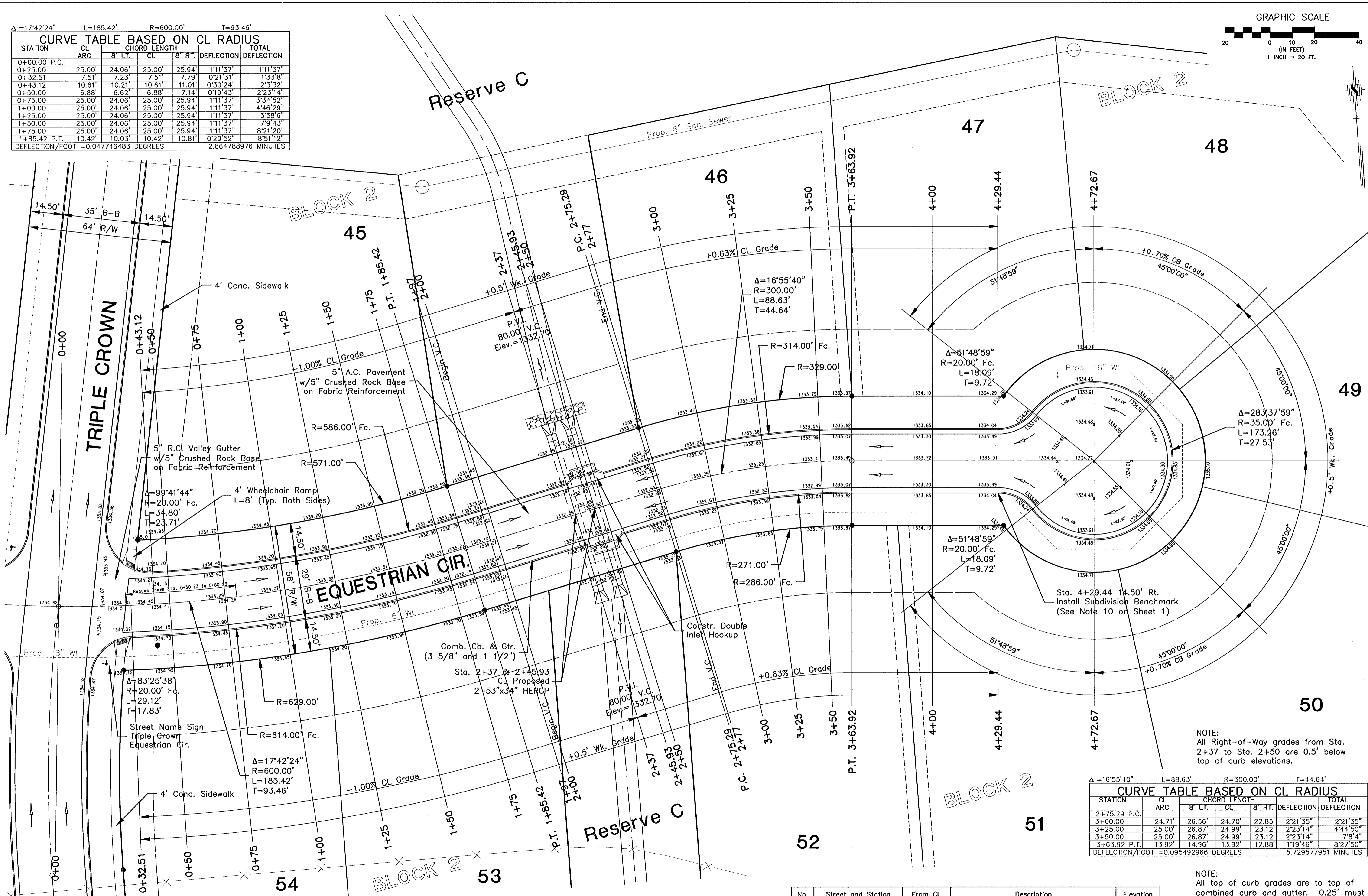
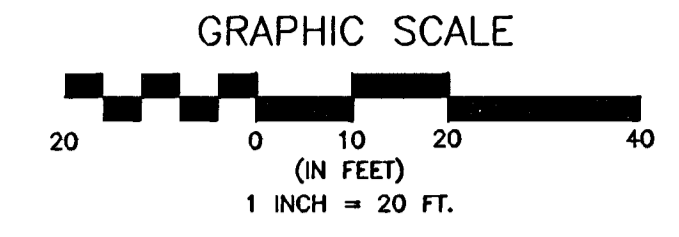


$\Delta = 17'42'24''$ $L = 185.42'$ $R = 600.00'$ $T = 93.46'$

STATION	CL ARC	CHORD LENGTH		DEFLECTION	TOTAL DEFLECTION
		8' LT.	8' RT.		
0+00.00 P.C.					
0+25.00	25.00'	24.06'	25.00'	1'11'37"	1'11'37"
0+50.00	7.51'	7.23'	7.51'	0'21'31"	1'33'8"
0+75.00	10.81'	10.21'	10.81'	0'30'24"	2'3'32"
1+00.00	6.88'	6.62'	6.88'	0'19'43"	2'23'14"
1+25.00	25.00'	24.06'	25.00'	1'11'37"	3'34'52"
1+50.00	25.00'	24.06'	25.00'	1'11'37"	4'46'29"
1+75.00	25.00'	24.06'	25.00'	1'11'37"	5'58'6"
2+00.00 P.T.	10.42'	10.03'	10.42'	0'29'52"	8'21'20"
2+25.00					8'51'12"

DEFLECTION/FOOT = 0.047746483 DEGREES 2.864788976 MINUTES



$\Delta = 16'55'40''$ $L = 88.63'$ $R = 300.00'$ $T = 44.64'$

STATION	CL ARC	CHORD LENGTH		DEFLECTION	TOTAL DEFLECTION
		8' LT.	8' RT.		
2+75.29 P.C.					
3+00.00	24.71'	26.56'	24.70'	2'21'35"	2'21'35"
3+25.00	25.00'	26.87'	24.99'	2'23'14"	4'44'50"
3+50.00	25.00'	26.87'	24.99'	2'23'14"	7'08'4"
3+75.00 P.T.	13.92'	14.96'	13.92'	1'19'46"	8'27'50"

DEFLECTION/FOOT = 0.095492966 DEGREES 5.729577951 MINUTES

No.	Street and Station	From CL	Description	Elevation
6	Equestrian Cir., 4+29.44	14.50' (S)	Top of Curb (S), at Curb Return	1333.79

NOTE:
All Right-of-Way grades from Sta. 2+37 to Sta. 2+50 are 0.5' below top of curb elevations.

NOTE:
All top of curb grades are to top of combined curb and gutter. 0.25' must be subtracted from top of curb elevations to top of roll curb.

EQUINESTATES ADDITION - PHASE 2
 STREET IMPROVEMENTS
 EQUESTRIAN CIRCLE
 CITY OF WICHITA, KANSAS
 JAMES L. ARNDORF, P.E. - CITY ENGINEER
 C.O.N. Project # 472-85430 O.C.N. # 765869

POE & ASSOCIATES, INC.
 CONSULTING ENGINEERS
 5940 E. Central, Suite 200 • Wichita, KS 67208-4242
 Phone 316/685-4114 • FAX 316/685-4444

FINAL
 Designed By: JMU/JPD
 Drawn By: JPD
 P.O. Job No.: 1694J
 Date: January 2006