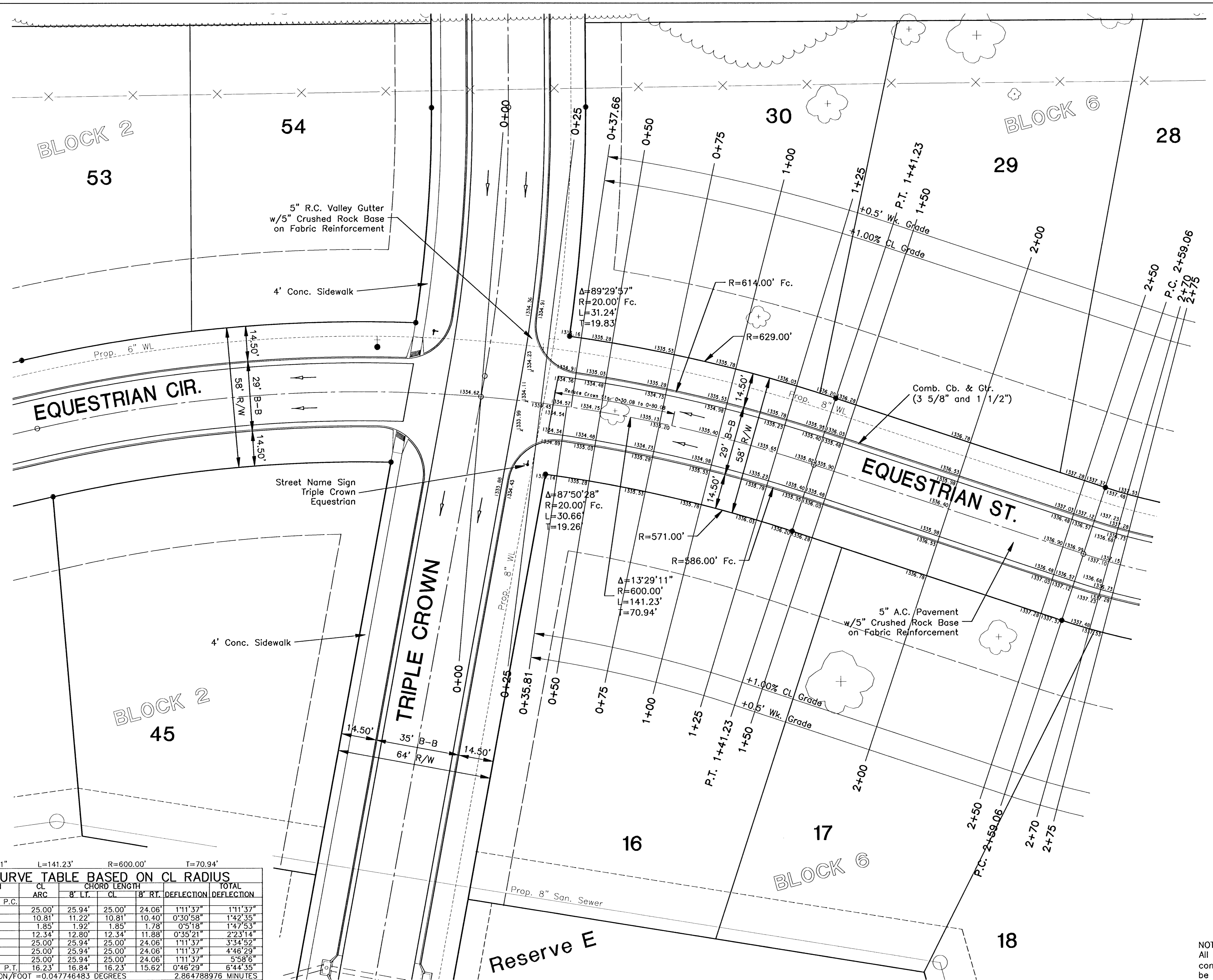


$\Delta = 13'29'11''$ $L = 141.23'$ $R = 600.00'$ $T = 70.94'$
CURVE TABLE BASED ON CL RADIUS

STATION	CHORD LENGTH				DEFLECTION	TOTAL DEFLECTION
	CL ARC	8' LT.	CL	8' RT.		
0+00.00 P.C.						
0+25.00	25.00'	25.94'	25.00'	24.06'	1'11'37"	1'11'37"
0+35.81	10.81'	11.22'	10.81'	10.40'	0'30'58"	1'42'35"
0+37.66	1.85'	1.92'	1.85'	1.78'	0'5'18"	1'47'53"
0+50.00	12.34'	12.80'	12.34'	11.88'	0'35'21"	2'23'14"
0+75.00	25.00'	25.94'	25.00'	24.06'	1'11'37"	3'34'52"
1+00.00	25.00'	25.94'	25.00'	24.06'	1'11'37"	4'46'29"
1+25.00	25.00'	25.94'	25.00'	24.06'	1'11'37"	5'58'06"
1+41.23 P.T.	16.23'	16.84'	16.23'	15.62'	0'46'29"	6'44'35"

DEFLECTION/FOOT = 0.047746483 DEGREES 2.864788976 MINUTES



FINAL
 Designed By: JMU/JPD
 Drawn By: JPD
 P.O. Box No.: 1694J
 Date: January 2006

POE & ASSOCIATES, INC.
CONSULTING ENGINEERS
 9940 E. Central, Suite 200 • Wichita, KS 67208-4242
 Phone 316.665-4114 • FAX 316.665-4444

POE

EQUESTRIAN ST. ADDITION - PHASE 2
STREET IMPROVEMENTS
EQUESTRIAN STREET
CITY OF WICHITA, KANSAS
 JAMES L. ANNOUR, P.E. - CITY ENGINEER O.C.A. # 765969
 C.O.W. Project # 472-83430

Revision
 Approved By: _____
 Date: _____
 No. 1
 2
 3

NOTE:
 All top of curb grades are to top of combined curb and gutter. 0.25' must be subtracted from top of curb elevations to top of roll curb.