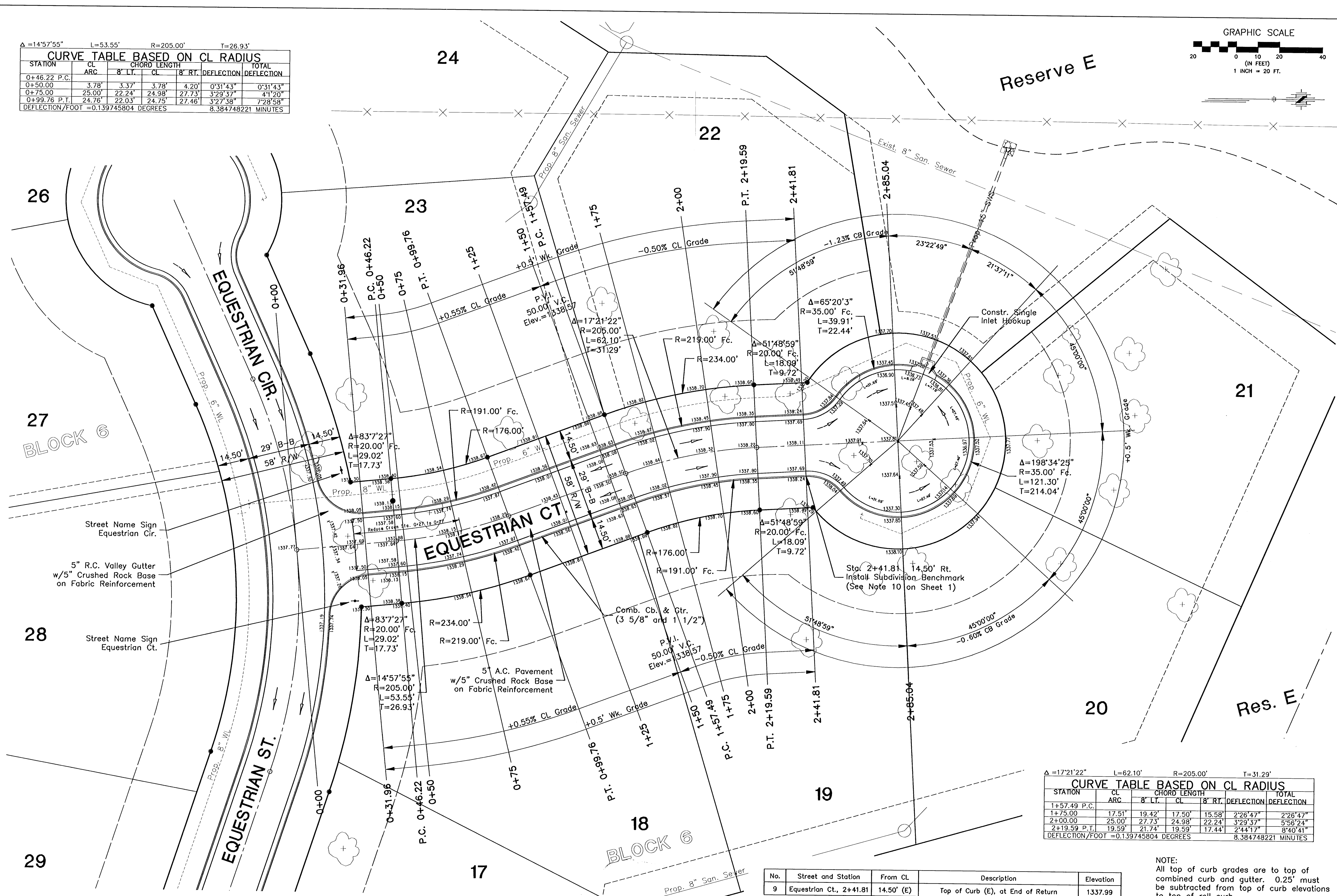
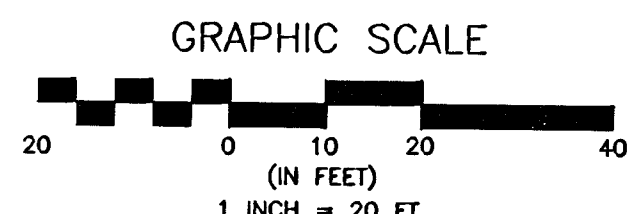


$\Delta = 14^{\circ}57'55''$ $L = 53.55'$ $R = 205.00'$ $T = 26.93'$

| STATION | CL ARC | CHORD LENGTH | | TOTAL DEFLECTION | |
|---------------------------------------|--------|--------------|--------|---------------------|------------|
| | | 8' LT. | 8' RT. | 8' RT. | DEFLECTION |
| 0+46.22 P.C. | | | | | |
| 0+50.00 | 3.78' | 3.37' | 3.78' | 4.20' | 0'31'43" |
| 0+75.00 | 25.00' | 22.24' | 24.98' | 27.73' | 3'29'37" |
| 0+99.76 P.T. | 24.76' | 22.03' | 24.75' | 27.46' | 3'27'38" |
| DEFLECTION/FOOT = 0.139745804 DEGREES | | | | 8.384748221 MINUTES | |



$\Delta = 17^{\circ}21'22''$ $L = 62.10'$ $R = 205.00'$ $T = 31.29'$

| STATION | CL ARC | CHORD LENGTH | | TOTAL DEFLECTION | |
|---------------------------------------|--------|--------------|--------|---------------------|------------|
| | | 8' LT. | 8' RT. | 8' RT. | DEFLECTION |
| 1+57.49 P.C. | | | | | |
| 1+75.00 | 17.51' | 19.42' | 17.50' | 15.58' | 2'26'47" |
| 2+00.00 | 25.00' | 27.73' | 24.98' | 22.24' | 3'29'37" |
| 2+19.59 P.T. | 19.59' | 21.74' | 19.59' | 17.44' | 2'44'17" |
| DEFLECTION/FOOT = 0.139745804 DEGREES | | | | 8.384748221 MINUTES | |

| No. | Street and Station | From CL | Description | Elevation |
|-----|-------------------------|------------|-----------------------------------|-----------|
| 9 | Equestrian Ct., 2+41.81 | 14.50' (E) | Top of Curb (E), at End of Return | 1337.99 |

NOTE:
All top of curb grades are to top of combined curb and gutter. 0.25' must be subtracted from top of curb elevations to top of roll curb.

FINAL
 Designed By: JMU/JPD
 Drawn By: JPD
 P.O. Box No.: 1694J
 Date: January 2006
 Sheet 12 of 78

POE & ASSOCIATES, INC.
CONSULTING ENGINEERS
 5940 E. Central, Suite 200 • Wichita, KS 67208-4242
 Phone 316.685-1114 • FAX 316.685-4444
CITY OF WICHITA, KANSAS
 JAMES L. ARMOUR, P.E. - CITY ENGINEER
 C.O.W. Project # 472-83430 O.C.A. # 765969

EQUESTRIAN ESTATES ADDITION - PHASE 2
STREET IMPROVEMENTS
EQUESTRIAN COURT
CITY OF WICHITA, KANSAS