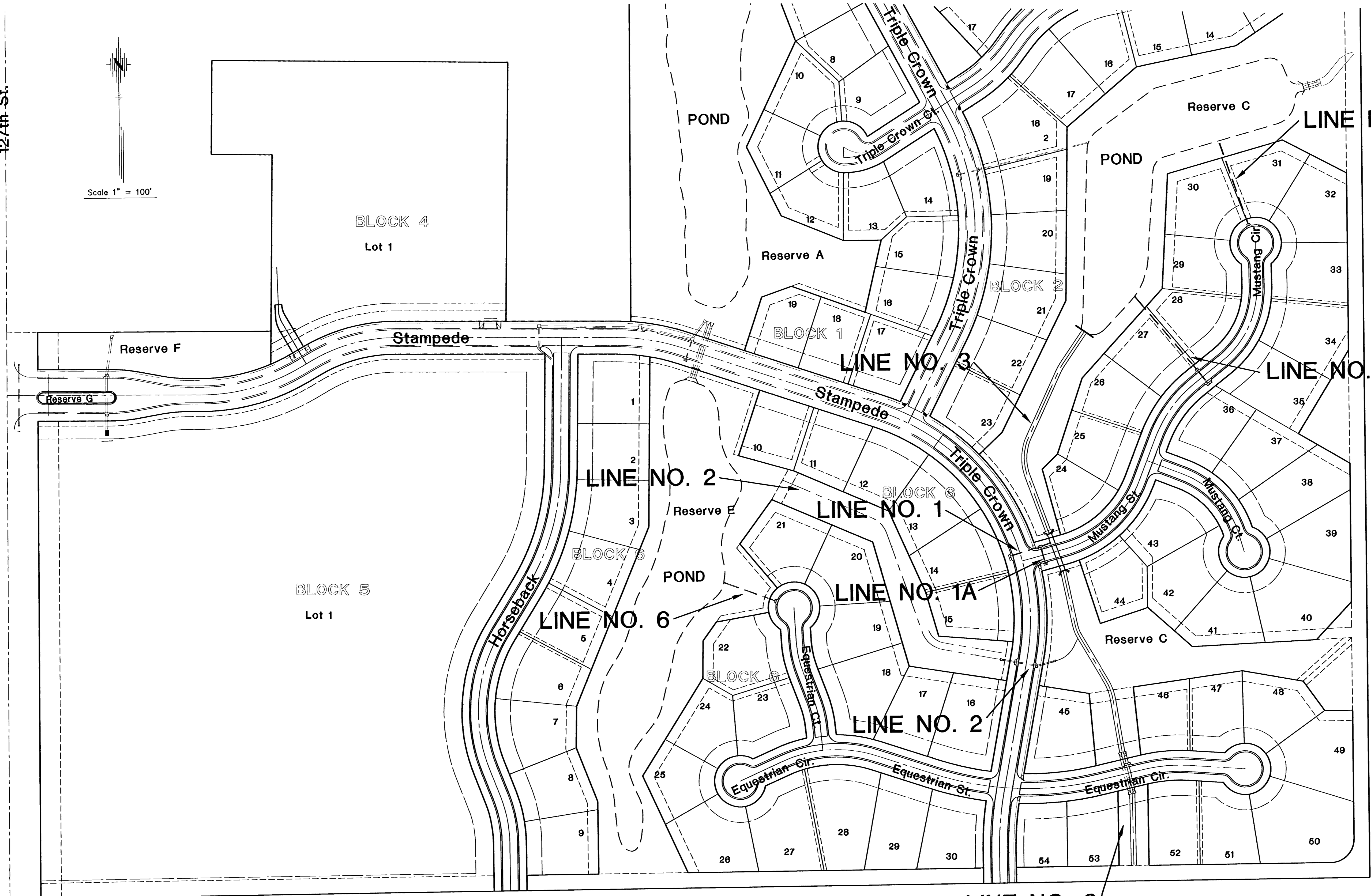
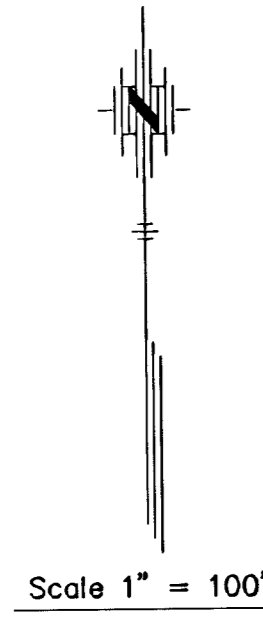


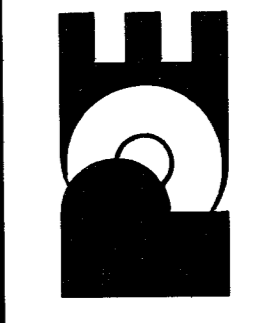
127th St.



No.	Date	By	Approved	Revision
1				
2				
3				

EQUESTRIAN ESTATES ADDITION - PHASE 2
 STREET IMPROVEMENTS
 STORM SEWER KEY MAP
 CITY OF WICHITA, KANSAS
 JAMES L. ARNOUR, P.E. - CITY ENGINEER
 C.O.W. Project # 472-83430 O.C.A. # 765969

POE & ASSOCIATES, INC.
 CONSULTING ENGINEERS
 5940 E. Central, Suite 200 Wichita, KS 67208-4242
 Phone 316/685-1114 FAX 316/685-4444



FINAL

Designed By: JMU/JPD
 Drawn By: JPD
 P.O. Job No.: 1694J
 Date: January 2006