

GENERAL NOTES (CONT.)

THE CONTRACTOR SHALL BE RESPONSIBLE FOR PRESERVING PROPERTY IRONS WHICH ARE SHOWN ON THE PLANS. THE CONTRACTOR SHALL BE REQUIRED TO RE-ESTABLISH ANY PROPERTY IRONS WHICH HAVE BEEN SHOWN AND WHICH ARE DAMAGED OR DESTROYED BY HIS CONSTRUCTION OPERATIONS. SUCH IRONS SHALL BE RE-ESTABLISHED BY A LICENSED LAND SURVEYOR IN ACCORDANCE WITH STATE LAWS. NO SEPARATE MEASUREMENT OR PAYMENT WILL BE MADE FOR THIS WORK AS IT SHALL BE CONSIDERED SUBSIDIARY TO OTHER ITEMS IN THE CONTRACT. WHERE PROPERTY IRONS WERE LOCATED AS PART OF THE DESIGN SURVEY, THEY HAVE BEEN SHOWN AND NOTED ON THE PLANS.

BORROW AREAS PROVIDED BY THE CONTRACTOR SHALL BE APPROVED BY THE ENGINEER AS TO SUITABILITY OF MATERIAL AND LOCATION. SPECIAL CARE SHALL BE TAKEN IN THIS APPROVAL TO MINIMIZE THE INCREASE OF SILTATION AND TURBIDITY OF STREAMS, LAKES AND RESERVOIRS AND TO AVOID INTERFERENCE WITH THE MOVEMENT OF MIGRATORY FISH. AREAS WHICH, IN THE OPINION OF THE ENGINEER, MAY LEAVE AN UNSIGHTLY APPEARANCE TO THE PROJECT WILL NOT BE APPROVED.

ALL BORROW AREA LOCATIONS SHALL BE SUBMITTED TO THE BUREAU OF LOCAL PROJECTS FOR CLEARANCE FROM THE KANSAS HISTORICAL SOCIETY AND THE KANSAS DEPT. OF WILDLIFE & PARKS PRIOR TO ANY EXCAVATION.

ALL DISPOSAL SITES MUST BE APPROVED BY THE KANSAS DEPT. OF HEALTH AND ENVIRONMENT. MATERIAL EITHER STOCKPILED OR DISPOSED OF IN A FLOOD PLAIN WOULD REQUIRE A KANSAS STATE BOARD OF AGRICULTURE PERMIT. ANY MATERIAL DUMPED IN WATERS OF THE UNITED STATES OR WETLANDS IS SUBJECT TO U.S. ARMY CORPS OF ENGINEERS PERMITTING REGULATIONS.

ANY MATERIAL BURIED OR STOCKPILED BEYOND APPROVED CONSTRUCTION LIMITS WOULD REQUIRE ADDITIONAL ARCHEOLOGICAL INVESTIGATIONS UNLESS BURIED IN A PREVIOUSLY APPROVED BORROW LOCATION.

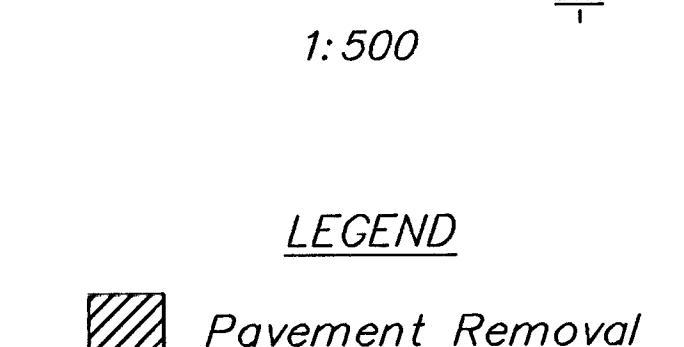
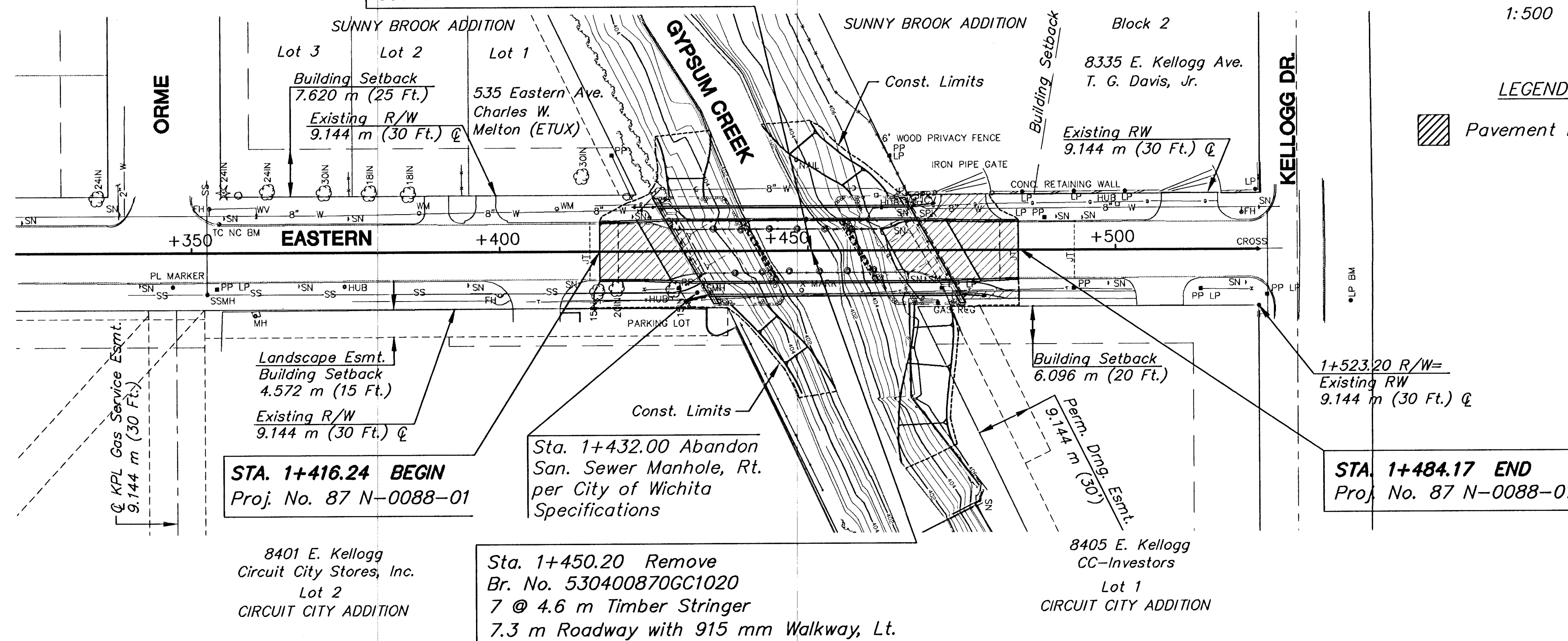
- P.O.T. @ Sta. 1+304.799
- Cut "V" Notch in pavement
N 304 800.00, E 304 800.00
 - "X" cut in top of curb 9.205 m SSW
 - 3-60d nails on NW face of Power Pole 22.519 m SE
 - "X" cut on sidewalk 9.205 m E

Sta. 1+450.20 Construct
Br. No. 530400870GC1020
12-16-12 m R.C. Haunched Slab Spans
30° Skew Lt., 9.8 m Roadway with
1.8 m Walkway, Lt. & Rt.
See Sh. No. 9-19

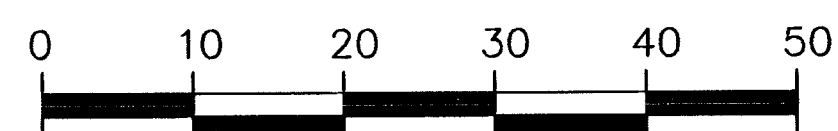
- P.O.T. @ Sta. 1+523.234
- Cut "X" in pavement
N 523 234.92, E 304 800.00
 - Top center of Fire Hydrant 6.538 m SW
 - 3-60d nails in NW face of Power Pole 11.018 m SE
 - 3-60d nails in W. face of Power Pole 7.163 m E

FHWA REG NO.	STATE	PROJECT NO.	YEAR	SHEET NO.	TOTAL SHEETS
7	KANSAS	87 N-0088-01	1999	3	38

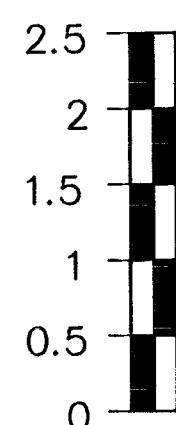
DATE	BY	REFERENCES NOTED	REFERENCES CHECKED



SCALE



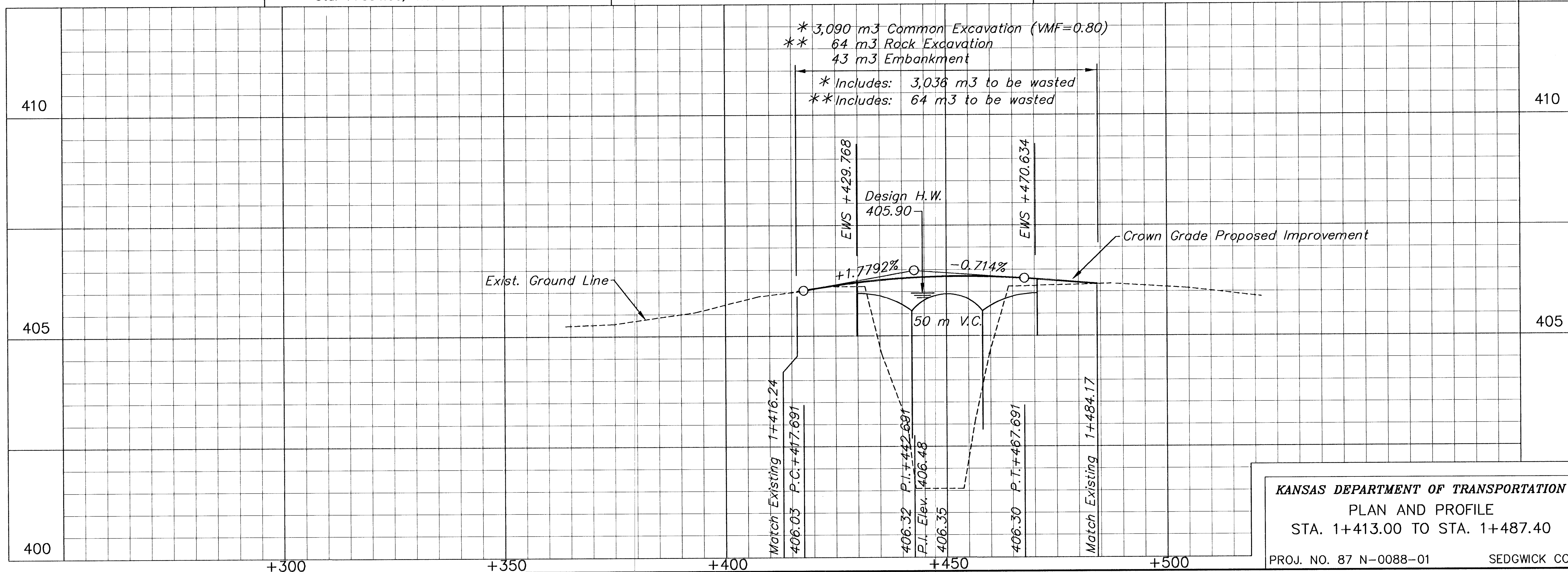
PLAN: Lat. & Long. (meters)



PROFILE: Horiz. same as above, Vert.

BM#1 "[]" NW Return N. End Orme & Eastern St.
Sta. 1+354.50, 4.679 m Lt. Elev. = 405.268

BM#2 "[]" on S. side of L.P. N. side of Kellogg Dr./E. side of Eastern St.
Sta. 1+538.09, 8.466 m Rt. Elev. = 406.161



UTILITIES
City of Wichita Water/Sewer
8th Floor - City Hall
455 N. Main
Wichita, Ks. 67202
Bill Perkins (316) 268-4555

Kansas Gas & Electric
1900 E. Central, Box 208
Wichita, Ks. 67214
Russ Chitwood (316) 261-6251

Southwest Bell Telephone Co.
154 N. Broadway
Wichita, Ks. 67202
Greg Sharpe (313) 268-2245

Cablevision
701 East Douglas
Wichita, Ks. 67202
Don Sue (316) 262-4270

KANSAS DEPARTMENT OF TRANSPORTATION
PLAN AND PROFILE
STA. 1+413.00 TO STA. 1+487.40

PROJ. NO. 87 N-0088-01

SEDGWICK CO.