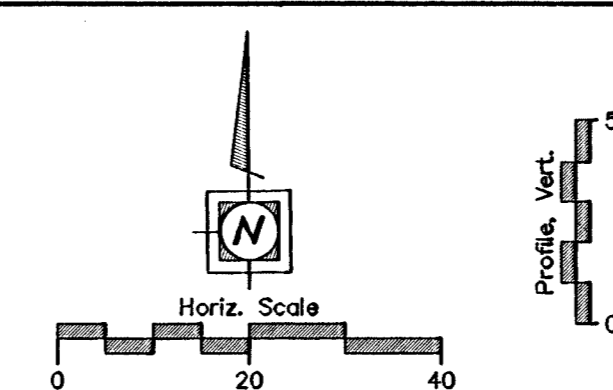
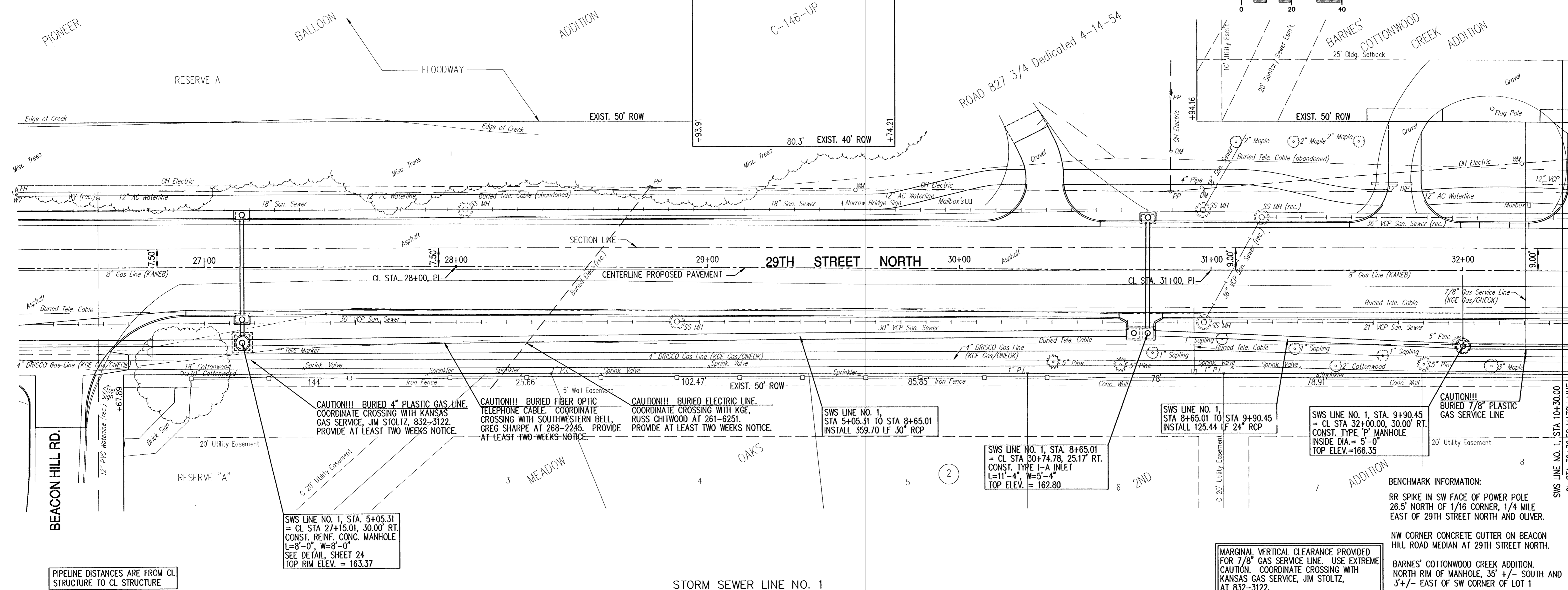


|                 |        |              |      |           |              |
|-----------------|--------|--------------|------|-----------|--------------|
| PHWA REGION NO. | STATE  | PROJECT NO.  | YEAR | SHEET NO. | TOTAL SHEETS |
| 7               | KANSAS | 87 N-0137-01 | 99   | 20        | 24           |



CAUTION!!! BURIED 4" PLASTIC GAS LINE. COORDINATE CROSSING WITH KANSAS GAS SERVICE, JIM STOLTZ, 832-3122. PROVIDE AT LEAST TWO WEEKS NOTICE.

CAUTION!!! BURIED FIBER OPTIC TELEPHONE CABLE. COORDINATE CROSSING WITH SOUTHWESTERN BELL, GREG SHARPE AT 268-2245. PROVIDE AT LEAST TWO WEEKS NOTICE.

CAUTION!!! BURIED ELECTRIC LINE. COORDINATE CROSSING WITH KGE, RUSS CHITWOOD AT 261-6251. PROVIDE AT LEAST TWO WEEKS NOTICE.

SWS LINE NO. 1, STA 5+05.31 TO STA 8+65.01  
INSTALL 359.70 LF 30" RCP

SWS LINE NO. 1, STA 8+65.01 TO STA 30+74.78, 25.17' RT.  
CONST. TYPE I-A INLET  
L=11'-4", W=5'-4"  
TOP ELEV. = 162.80

SWS LINE NO. 1, STA 8+65.01 TO STA 9+90.45  
INSTALL 125.44 LF 24" RCP

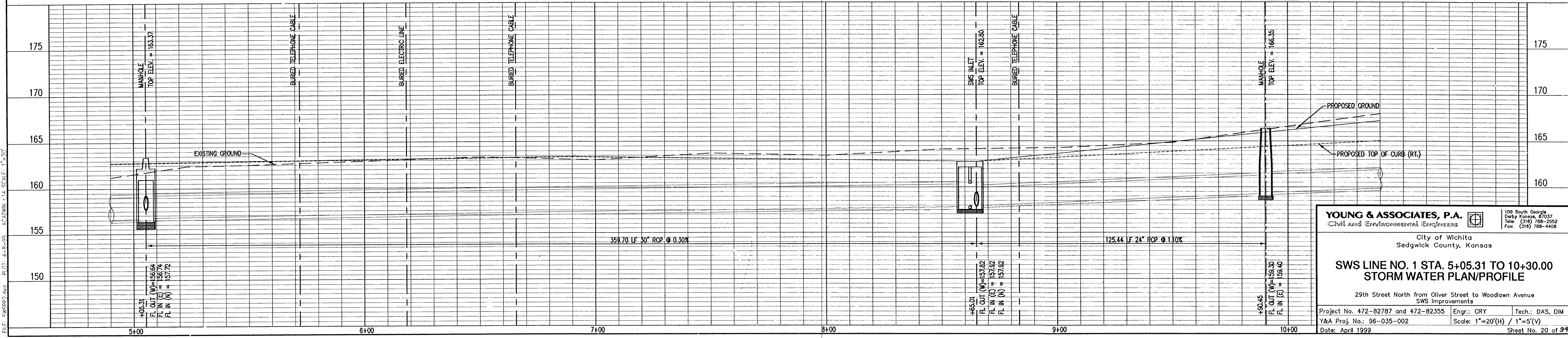
SWS LINE NO. 1, STA 9+90.45 TO CL STA 32+00.00, 30.00' RT.  
CONST. TYPE P MANHOLE  
INSIDE DIA. = 5'-0"  
TOP ELEV. = 166.35

CAUTION!!! BURIED 7/8" PLASTIC GAS SERVICE LINE

BENCHMARK INFORMATION:  
RR SPIKE IN SW FACE OF POWER POLE  
26.5' NORTH OF 1/16 CORNER, 1/4 MILE  
EAST OF 29TH STREET NORTH AND OLIVER. ELEV. = 161.18  
NW CORNER CONCRETE GUTTER ON BEACON  
HILL ROAD MEDIAN AT 29TH STREET NORTH. ELEV. = 162.99  
BARNES' COTTONWOOD CREEK ADDITION.  
NORTH RIM OF MANHOLE, 35' +/- SOUTH AND  
3' +/- EAST OF SW CORNER OF LOT 1 ELEV. = 164.21

PIPELINE DISTANCES ARE FROM CL STRUCTURE TO CL STRUCTURE

STORM SEWER LINE NO. 1



**YOUNG & ASSOCIATES, P.A.**  
CIVIL AND ENVIRONMENTAL ENGINEERS  
100 South George  
Dorby, Kansas, 67037  
Tel: (316) 788-2202  
Fax: (316) 788-4408

City of Wichita  
Sedgwick County, Kansas

**SWS LINE NO. 1 STA. 5+05.31 TO 10+30.00  
STORM WATER PLAN/PROFILE**

29th Street North from Oliver Street to Woodlawn Avenue  
SWS Improvements

Project No. 472-82787 and 472-82355 Engr.: CRY Tech.: DAS, DIM  
Y&A Proj. No.: 96-035-002 Scale: 1"=20'(H) / 1"=5'(V)  
Date: April 1999 Sheet No. 20 of 24