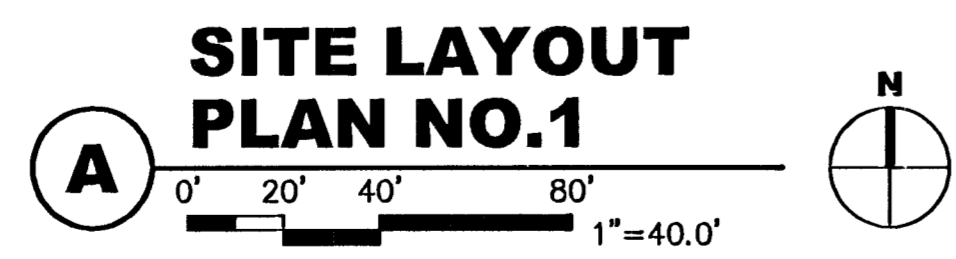
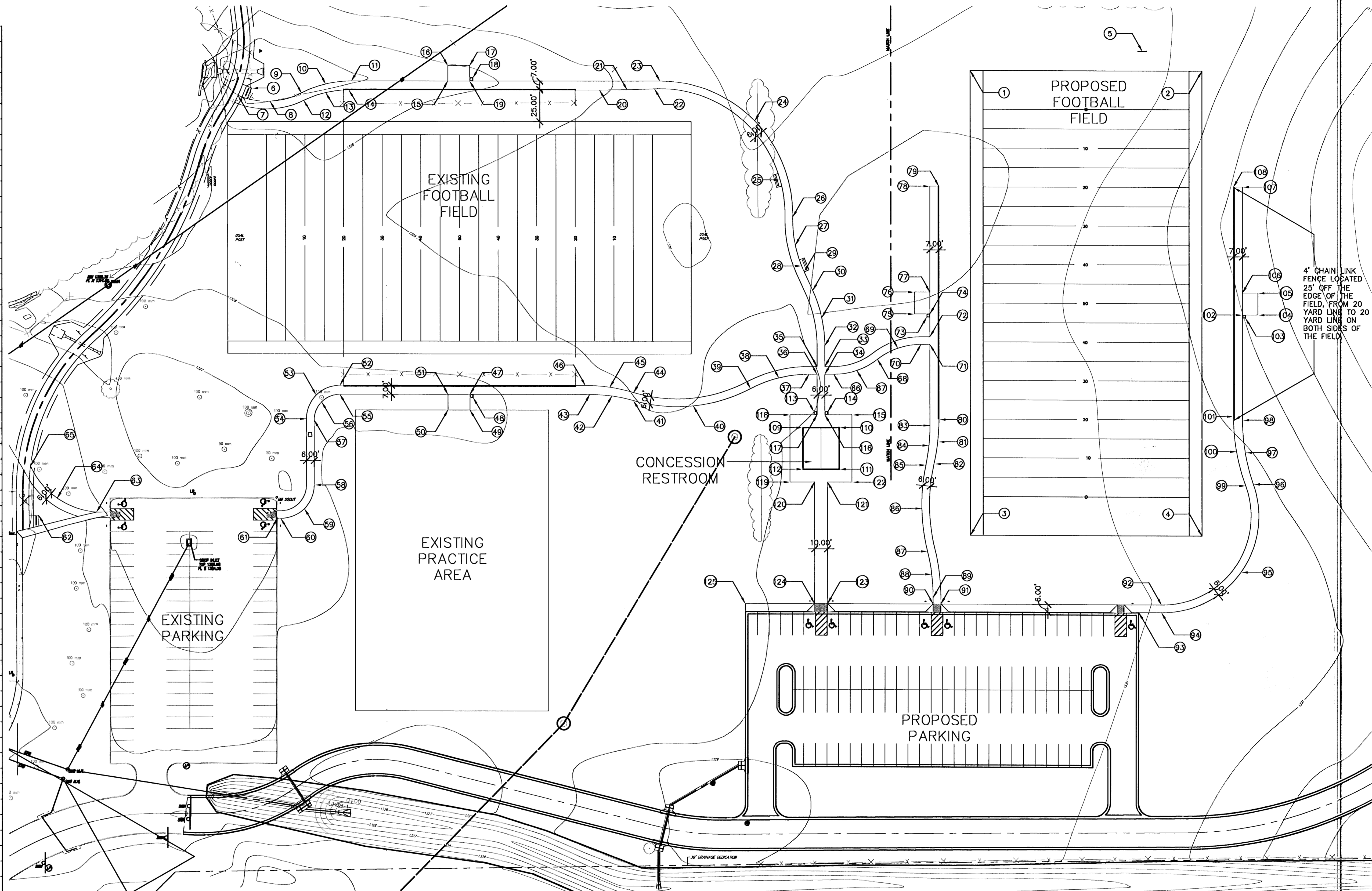


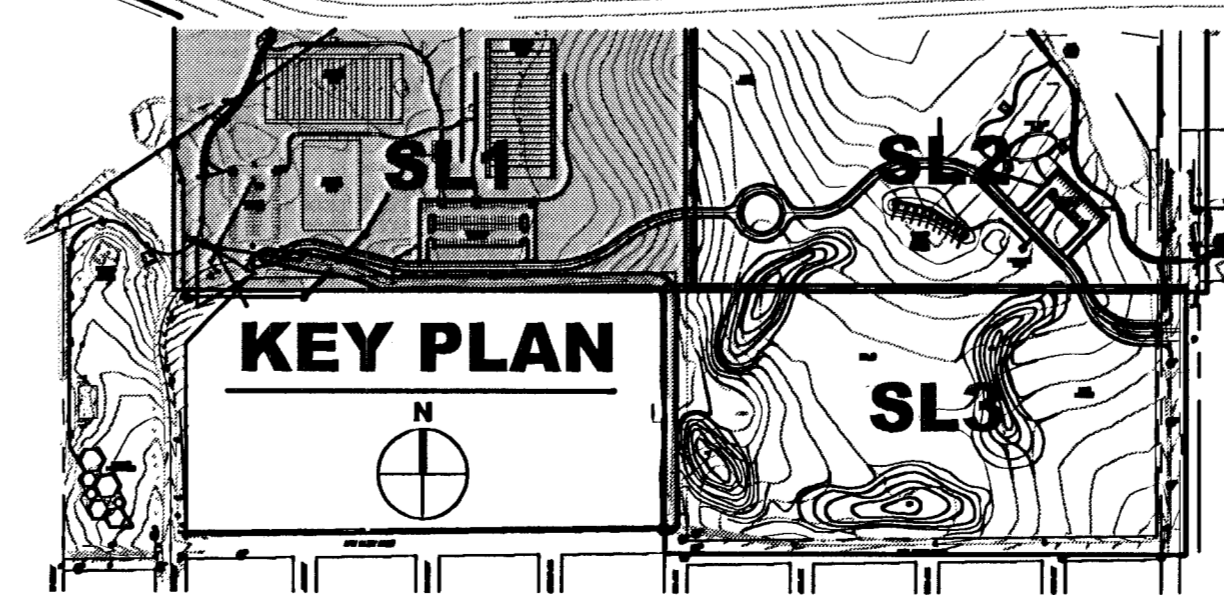
| Pt. | North | East |
|-----|----------|----------|
| 1 | 22844.34 | 18188.28 |
| 2 | 22844.34 | 18368.26 |
| 3 | 22284.34 | 18188.26 |
| 4 | 22284.34 | 18368.26 |
| 5 | 22659.56 | 18322.02 |
| 6 | 22630.33 | 17629.93 |
| 7 | 22624.54 | 17619.36 |
| 8 | 22620.21 | 17644.24 |
| 9 | 22626.60 | 17668.67 |
| 10 | 22633.56 | 17687.58 |
| 11 | 22635.92 | 17707.60 |
| 12 | 22620.80 | 17670.48 |
| 13 | 22626.86 | 17687.57 |
| 14 | 22628.92 | 17705.59 |
| 15 | 22635.92 | 17782.40 |
| 16 | 22647.92 | 17782.40 |
| 17 | 22647.92 | 17799.40 |
| 18 | 22638.42 | 17801.90 |
| 19 | 22635.92 | 17801.90 |
| 20 | 22628.92 | 17900.28 |
| 21 | 22629.15 | 17921.63 |
| 22 | 22629.83 | 17942.97 |
| 23 | 22635.92 | 17947.11 |
| 24 | 22604.99 | 18020.70 |
| 25 | 22559.56 | 18040.38 |
| 26 | 22530.78 | 18050.09 |
| 27 | 22509.03 | 18052.10 |
| 28 | 22492.80 | 18056.99 |
| 29 | 22488.20 | 18058.96 |
| 30 | 22473.75 | 18065.59 |
| 31 | 22452.77 | 18072.61 |
| 32 | 22430.77 | 18074.98 |
| 33 | 22414.79 | 18074.98 |
| 34 | 22408.79 | 18074.98 |
| 35 | 22414.79 | 18068.98 |
| 36 | 22408.79 | 18068.98 |
| 37 | 22408.79 | 18062.74 |
| 38 | 22405.95 | 18039.37 |
| 39 | 22397.59 | 18017.37 |
| 40 | 22384.12 | 17972.82 |
| 41 | 22388.18 | 17926.45 |
| 42 | 22391.73 | 17909.63 |
| 43 | 22392.92 | 17892.47 |
| 44 | 22394.42 | 17926.47 |
| 45 | 22398.54 | 17907.97 |
| 46 | 22399.92 | 17889.06 |
| 47 | 22392.92 | 17799.40 |
| 48 | 22390.42 | 17801.90 |
| 49 | 22380.92 | 17799.40 |
| 50 | 22380.92 | 17782.40 |
| 51 | 22392.92 | 17782.40 |
| 52 | 22392.92 | 17698.43 |
| 53 | 22392.31 | 17680.04 |
| 54 | 22373.92 | 17672.43 |
| 55 | 22392.92 | 17698.43 |
| 56 | 22387.06 | 17684.29 |
| 57 | 22372.92 | 17678.43 |
| 58 | 22322.63 | 17678.43 |
| 59 | 22304.24 | 17670.81 |
| 60 | 22296.63 | 17652.43 |
| 61 | 22296.63 | 17649.73 |
| 62 | 22299.16 | 17464.54 |
| 63 | 22301.71 | 17509.40 |

| Pt. | North | East |
|-----|----------|----------|
| 64 | 22312.46 | 17478.86 |
| 65 | 22337.35 | 17458.15 |
| 66 | 22299.16 | 17464.54 |
| 67 | 22411.79 | 18099.90 |
| 68 | 22420.48 | 18115.87 |
| 69 | 22429.16 | 18131.84 |
| 70 | 22432.17 | 18149.77 |
| 71 | 22432.17 | 18156.76 |
| 72 | 22438.17 | 18156.76 |
| 73 | 22453.34 | 18154.26 |
| 74 | 22455.84 | 18156.76 |
| 75 | 22455.84 | 18144.76 |
| 76 | 22472.84 | 18144.76 |
| 77 | 22472.84 | 18156.76 |
| 78 | 22554.84 | 18156.76 |
| 79 | 22554.84 | 18163.76 |
| 80 | 22373.93 | 18163.76 |
| 81 | 22356.64 | 18162.80 |
| 82 | 22339.55 | 18159.92 |
| 83 | 22369.34 | 18156.76 |
| 84 | 22353.88 | 18155.96 |
| 85 | 22338.58 | 18153.57 |
| 86 | 22305.12 | 18150.41 |
| 87 | 22271.80 | 18154.77 |
| 88 | 22253.93 | 18158.08 |
| 89 | 22235.79 | 18159.16 |
| 90 | 22230.79 | 18159.16 |
| 91 | 22230.79 | 18165.16 |
| 92 | 22230.79 | 18337.47 |
| 93 | 22224.79 | 18319.16 |
| 94 | 22224.79 | 18337.47 |
| 95 | 22256.42 | 18398.66 |
| 96 | 22324.64 | 18408.23 |
| 97 | 22349.13 | 18401.89 |
| 98 | 22374.34 | 18399.76 |
| 99 | 22323.51 | 18402.27 |
| 100 | 22349.90 | 18395.15 |
| 101 | 22377.13 | 18392.76 |
| 102 | 22455.84 | 18399.76 |
| 103 | 22453.34 | 18402.26 |
| 104 | 22455.84 | 18411.76 |
| 105 | 22472.84 | 18411.76 |
| 106 | 22472.84 | 18399.76 |
| 107 | 22554.84 | 18399.76 |
| 108 | 22554.84 | 18392.76 |
| 109 | 22367.37 | 18057.92 |
| 110 | 22367.37 | 18086.05 |
| 111 | 22335.20 | 18086.05 |
| 112 | 22335.20 | 18057.92 |
| 113 | 22379.87 | 18066.48 |
| 114 | 22379.87 | 18077.48 |
| 115 | 22377.37 | 18096.05 |
| 116 | 22377.37 | 18074.98 |
| 117 | 22377.37 | 18068.98 |
| 118 | 22377.37 | 18047.92 |
| 119 | 22325.20 | 18047.92 |
| 120 | 22325.20 | 18066.98 |
| 121 | 22325.20 | 18076.98 |
| 122 | 22325.20 | 18096.05 |
| 123 | 22230.79 | 18076.98 |
| 124 | 22230.79 | 18066.98 |
| 125 | 22230.79 | 18013.16 |



Control Points

| Pt. | North | East |
|-----|----------|----------|
| CP1 | 21261.49 | 17326.42 |
| CP2 | 21324.81 | 17335.22 |
| CP3 | 21847.62 | 17135.18 |
| CP4 | 22312.98 | 17649.23 |
| CP5 | 21847.62 | 18647.76 |
| CP6 | 21378.61 | 18648.22 |
| CP7 | 22742.50 | 20000.04 |



GossenLivingston

Architectural
Civil/Structural
Mechanical/Electrical
1411 N. WEBB ROAD
WICHITA, KS 67206
(316) 684-9600
Fax: (316) 684-9600

M.K.E.C.

411 N. WEBB ROAD
WICHITA, KS. 67206
(316) - 684-9600

GROVE PARK IMPROVEMENTS
PROJECT NAME

SITE LAYOUT PLAN NO.1
SHEET TITLE

DESIGN BY: LES DRAWN BY: TDM
 CHECKED BY: TDM

DATE: OCTOBER 2001 JOB NO.: 1003.010 SHEET/OF: C1401 / 50