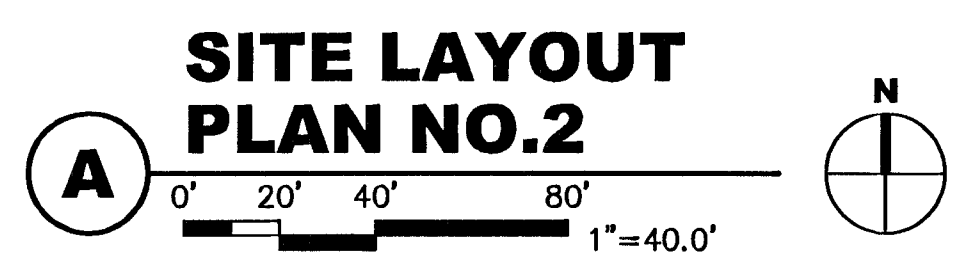
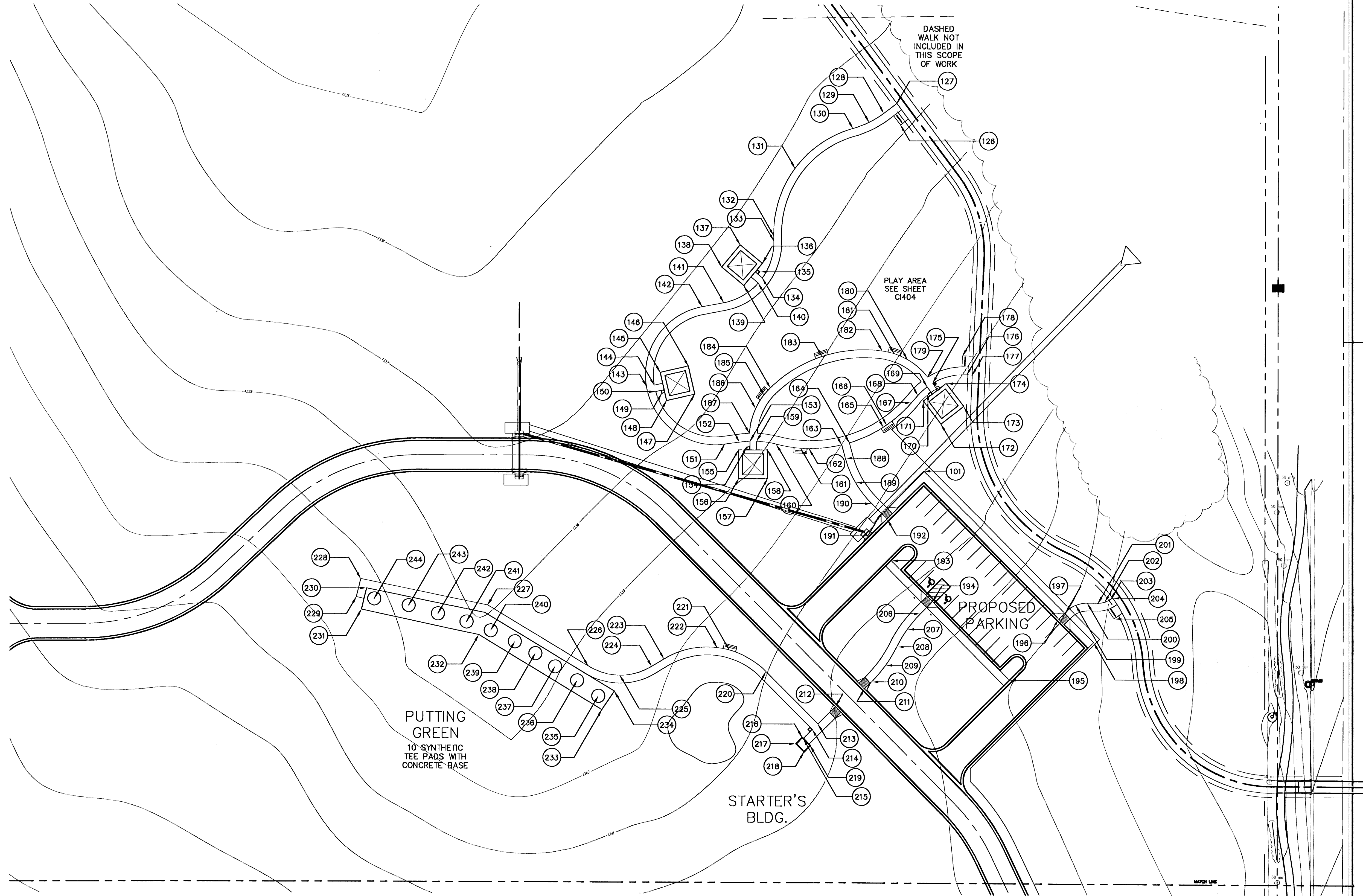


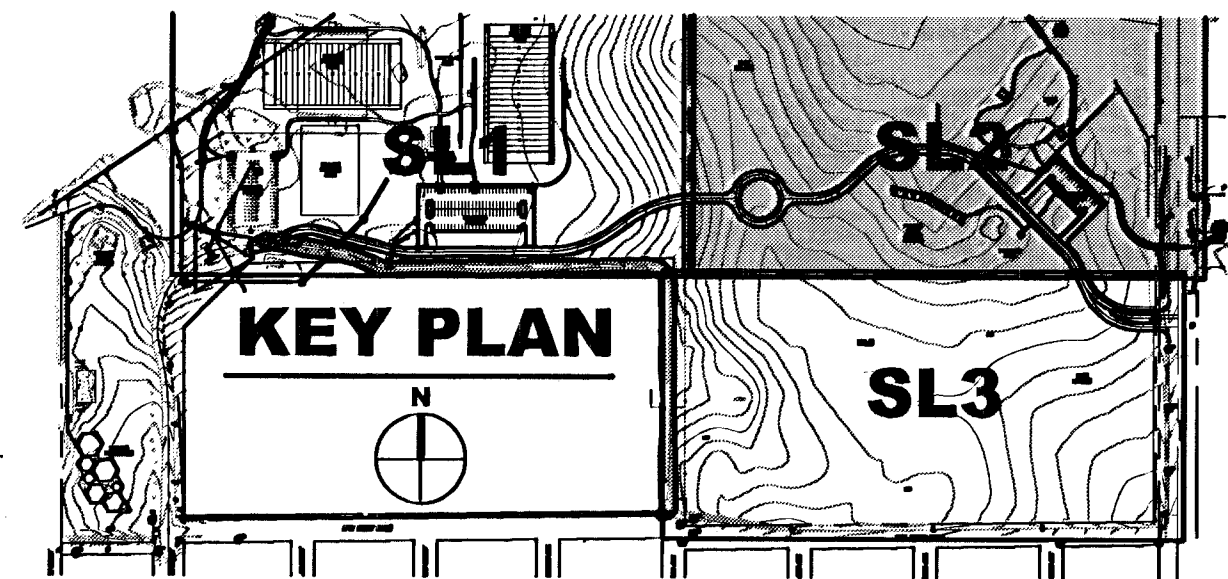
Pt.	North	East
126	22575.54	19661.38
127	22591.81	19658.59
128	22584.33	19648.60
129	22577.43	19637.37
130	22572.69	19625.06
131	22542.18	19580.94
132	22491.07	19564.69
133	22487.03	19564.78
134	22458.68	19556.01
135	22463.58	19554.04
136	22469.78	19555.96
137	22483.88	19539.07
138	22466.99	19524.98
139	22452.89	19541.87
140	22454.77	19552.88
141	22439.86	19526.57
142	22436.72	19510.08
143	22375.98	19467.69
144	22376.86	19473.63
145	22386.61	19478.14
146	22391.52	19499.59
147	22370.07	19504.50
148	22365.17	19483.05
149	22370.46	19479.28
150	22371.98	19474.72
151	22332.18	19527.42
152	22333.78	19538.71
153	22334.47	19546.75
154	22330.29	19544.22
155	22327.82	19538.03
156	22305.82	19538.08
157	22305.87	19560.08
158	22327.87	19560.03
159	22334.44	19551.75
160	22332.21	19566.81
161	22329.20	19585.30
162	22328.95	19591.73
163	22331.82	19616.70
164	22333.39	19622.49
165	22345.41	19648.41
166	22347.06	19650.89
167	22364.09	19670.04
168	22369.57	19674.84
169	22376.15	19681.92
170	22370.92	19682.53
171	22365.32	19679.01
172	22347.95	19692.51
173	22361.46	19709.88
174	22378.82	19696.37
175	22378.94	19686.07
176	22385.56	19712.29
177	22385.37	19716.42
178	22399.98	19709.01
179	22383.63	19682.23
180	22396.87	19666.81
181	22401.30	19656.71
182	22403.34	19647.55
183	22398.97	19601.59
184	22374.96	19562.15
185	22369.58	19557.35

Pt.	North	East
186	22359.18	19551.02
187	22340.46	19546.28
188	22321.76	19619.44
189	22303.15	19627.21
190	22287.15	19639.50
191	22279.78	19646.85
192	22275.18	19651.45
193	22243.62	19654.55
194	22212.52	19686.36
195	22153.13	19745.04
196	22199.70	19782.61
197	22205.37	19788.28
198	22182.05	19809.46
199	22210.36	19795.75
200	22212.11	19804.56
201	22212.10	19812.78
202	22212.87	19817.87
203	22215.13	19822.49
204	22216.08	19823.86
205	22200.28	19825.02
206	22203.32	19677.16
207	22191.44	19667.06
208	22178.10	19658.99
209	22163.94	19650.42
210	22151.33	19639.70
211	22145.78	19634.14
212	22132.37	19612.19
213	22119.01	19598.83
214	22114.77	19594.59
215	22107.82	19587.84
216	22108.70	19586.76
217	22103.99	19582.04
218	22097.88	19588.17
219	22012.57	19592.89
220	22158.76	19559.09
221	22175.07	19531.08
222	22176.90	19521.80
223	22168.16	19481.27
224	22162.46	19471.87
225	22155.73	19447.62
226	22162.61	19423.41
227	22208.81	19348.84
228	22228.74	19249.92
229	22214.95	19246.59
230	22221.69	19254.39
231	22205.39	19250.46
232	22166.28	19339.92
233	22129.49	19433.89
234	22143.55	19443.46
235	22137.60	19430.79
236	22151.63	19414.98
237	22162.24	19398.21
238	22172.28	19383.13
239	22181.21	19367.48
240	22189.59	19349.05
241	22196.28	19330.61
242	22202.42	19308.82
243	22208.56	19286.47
244	22213.59	19260.21



**Control Points**

Pt.	North	East
CP1	21261.49	17326.42
CP2	21324.81	17335.22
CP3	21847.62	17135.18
CP4	22312.96	17649.23
CP5	21847.62	18647.76
CP6	21378.61	18648.22
CP7	22742.50	20000.04



GossenLivingston  
Architects  
1924 North  
Wichita, KS 67208  
316-261-8888

M.K.E.C.  
411 N. WEBB ROAD  
WICHITA, KS. 67208  
(316) - 884-9600

**GROVE PARK IMPROVEMENTS**  
PROJECT NAME

**SITE LAYOUT PLAN NO.2**  
SHEET TITLE

DESIGN BY: **LES**    DRAWN BY: **JDM**    CHECKED BY: **JDM**

DATE: **OCTOBER 2001**    JOB NO.: **1003.010**    SHEET/OF: **C1402 / 50**