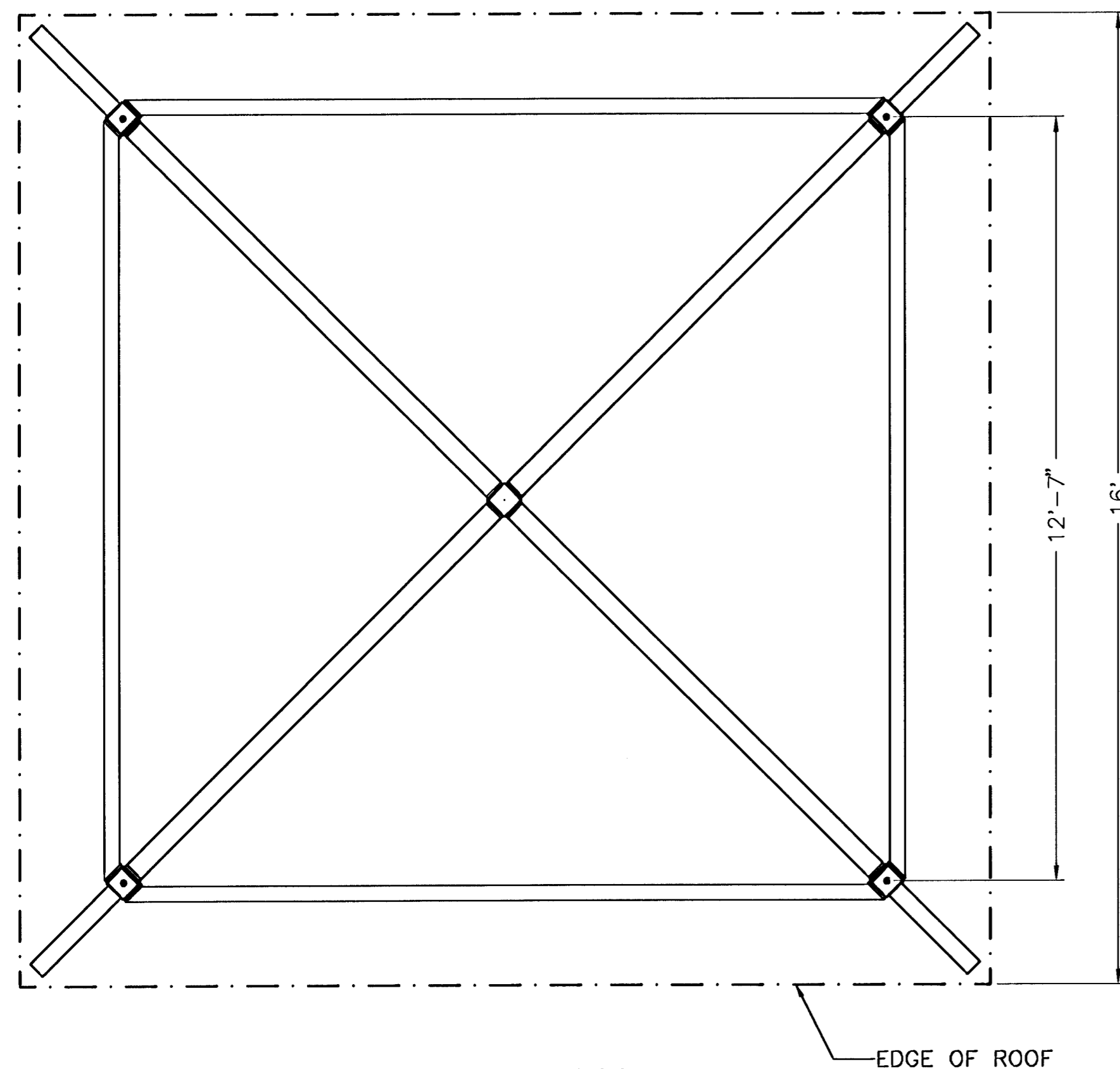
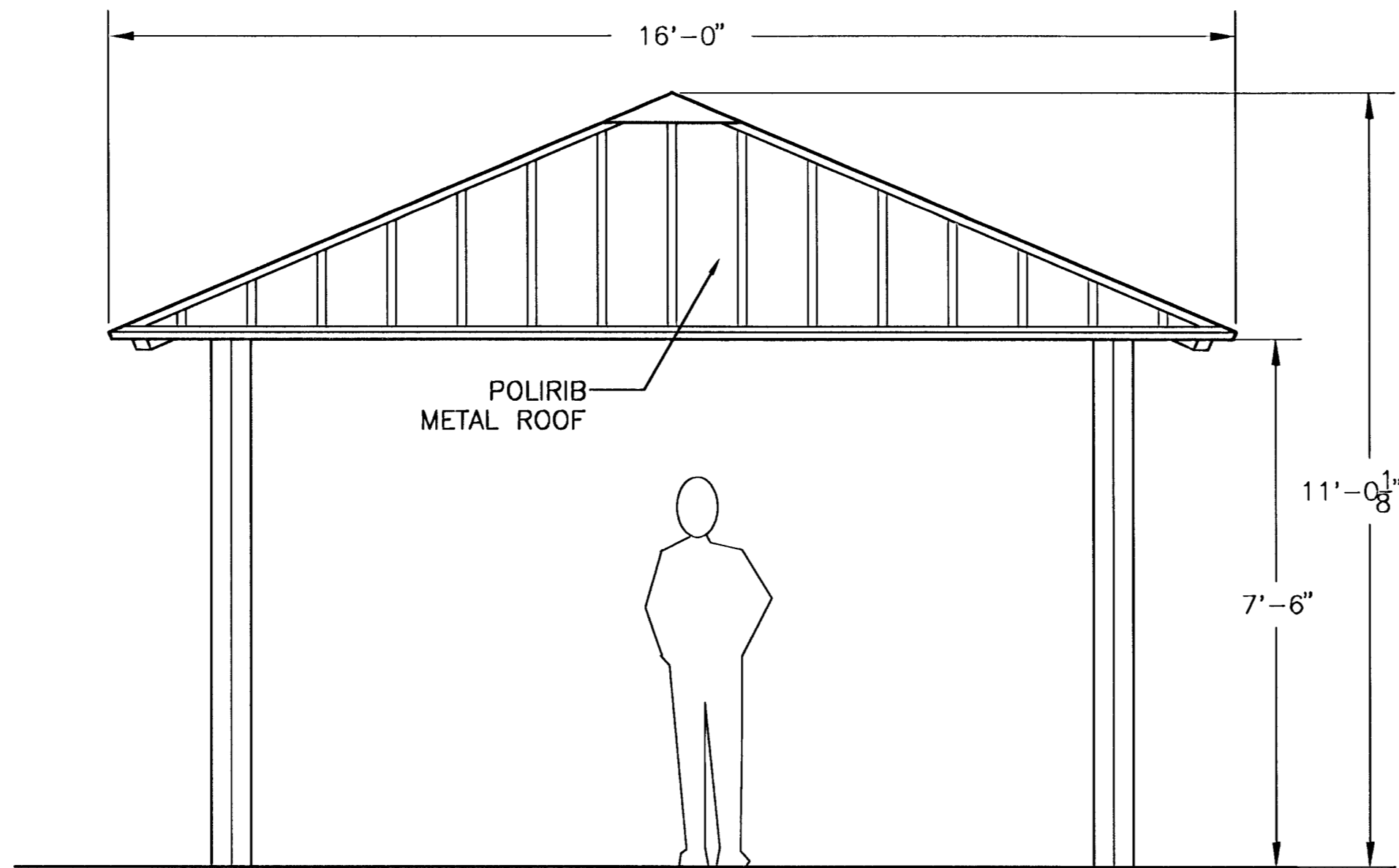


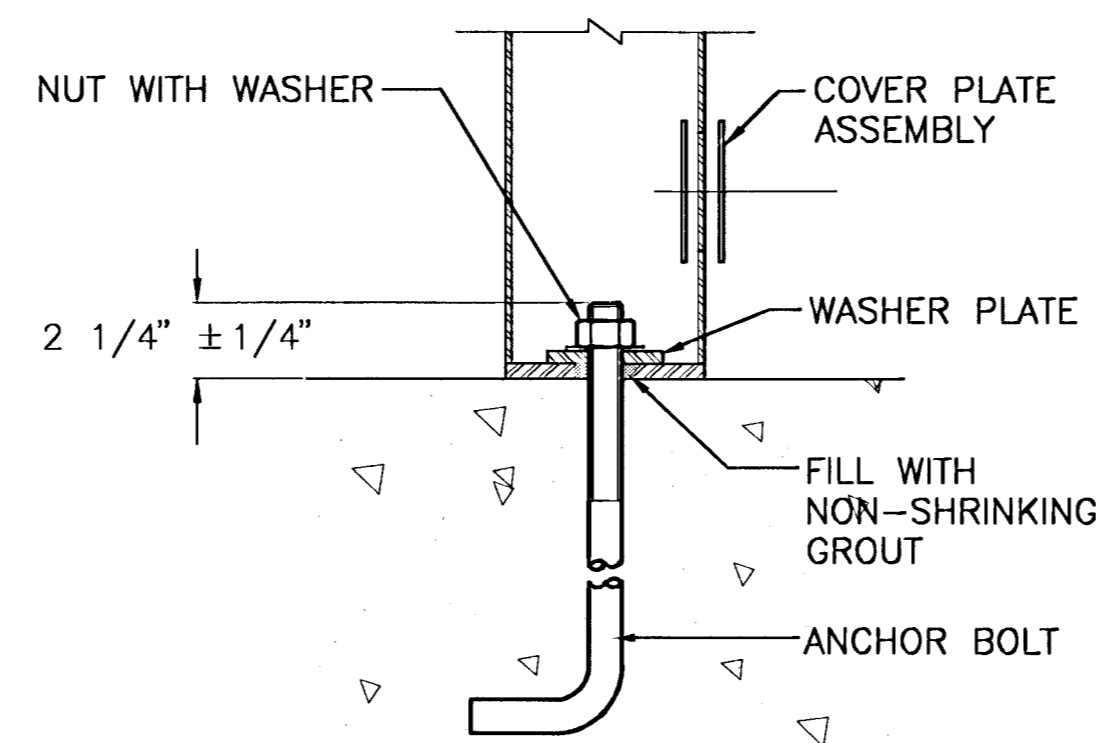
1 ANCHOR BOLT PLAN
NOT TO SCALE



4 FRAME PLAN
NOT TO SCALE



2 SQUARE 16 - ELEVATION
NOT TO SCALE



3 ANCHOR BOLT DETAIL
NOT TO SCALE

NOTES
FOR FINAL TIGHTENING, USE TURN OF NUT METHOD: USING A SPUD WRENCH, TIGHTEN AS MUCH AS POSSIBLE WITH A NORMAL MANS STRENGTH. THEN, USING AN EXTENSION, TIGHTEN AN ADDITIONAL 1/3 TURN.

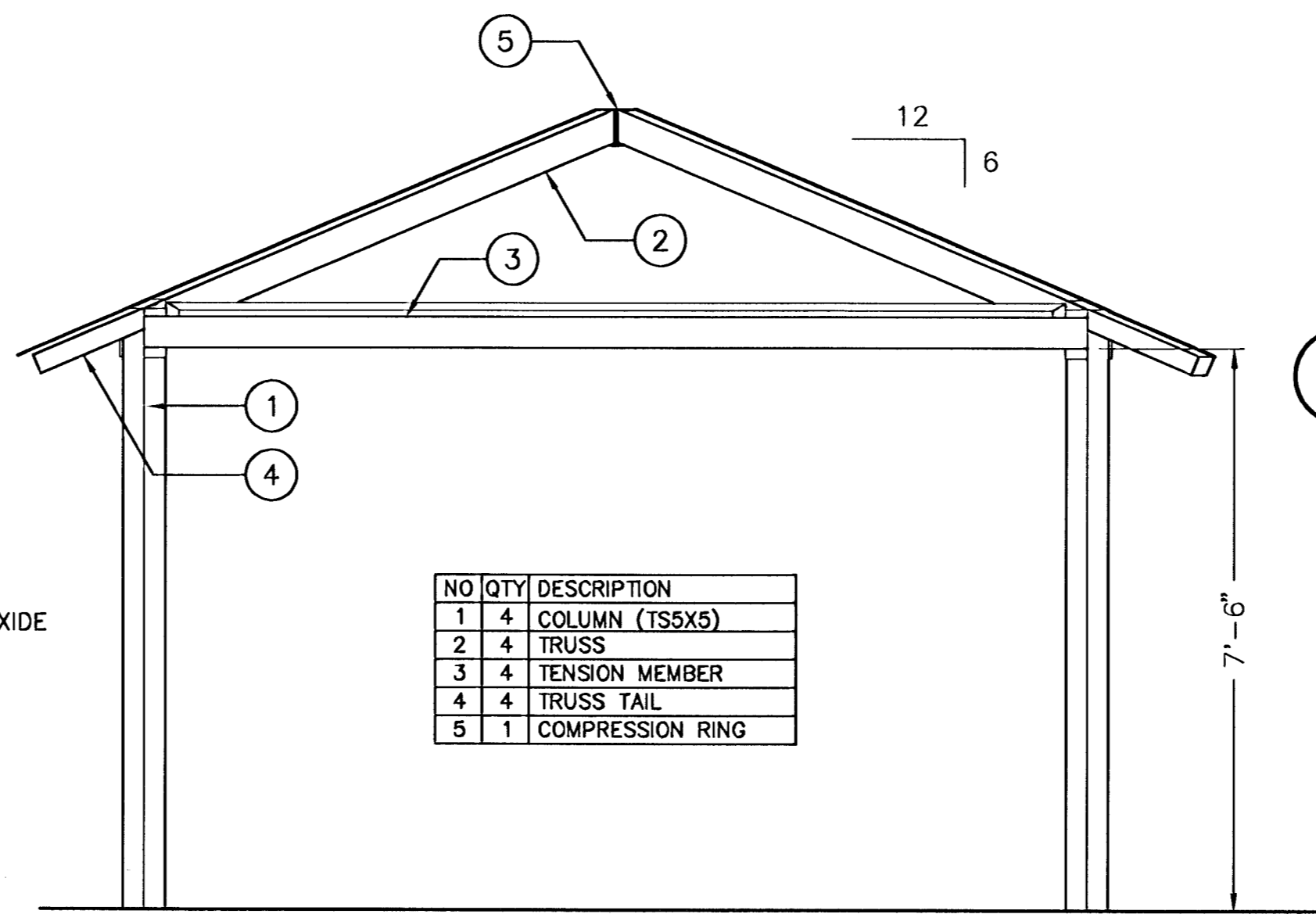
FRAME MUST BE PLUMB, SQUARE AND BOLTS TIGHTENED BEFORE INSTALLING PURLINS, IF REQUIRED. PURLINS MUST BE PARALLEL TO THE EAVE BEAMS AND TENSION MEMBERS.

FASTENERS: ALL BOLTS USED FOR STRUCTURAL CONNECTIONS ARE ASTM A325. DO NOT SUBSTITUTE WITH A LESSER GRADE. INSPECTION OF HIGH STRENGTH BOLTING, IF REQUIRED, TO BE PER CHAPTER 17 OF THE UNIFORM BUILDING CODE 1994 EDITION.

FRAME FINISH: FRAME COMPONENTS ARE RED OXIDE PRIME PAINTED ONLY. FINISH PAINT ON-SITE.

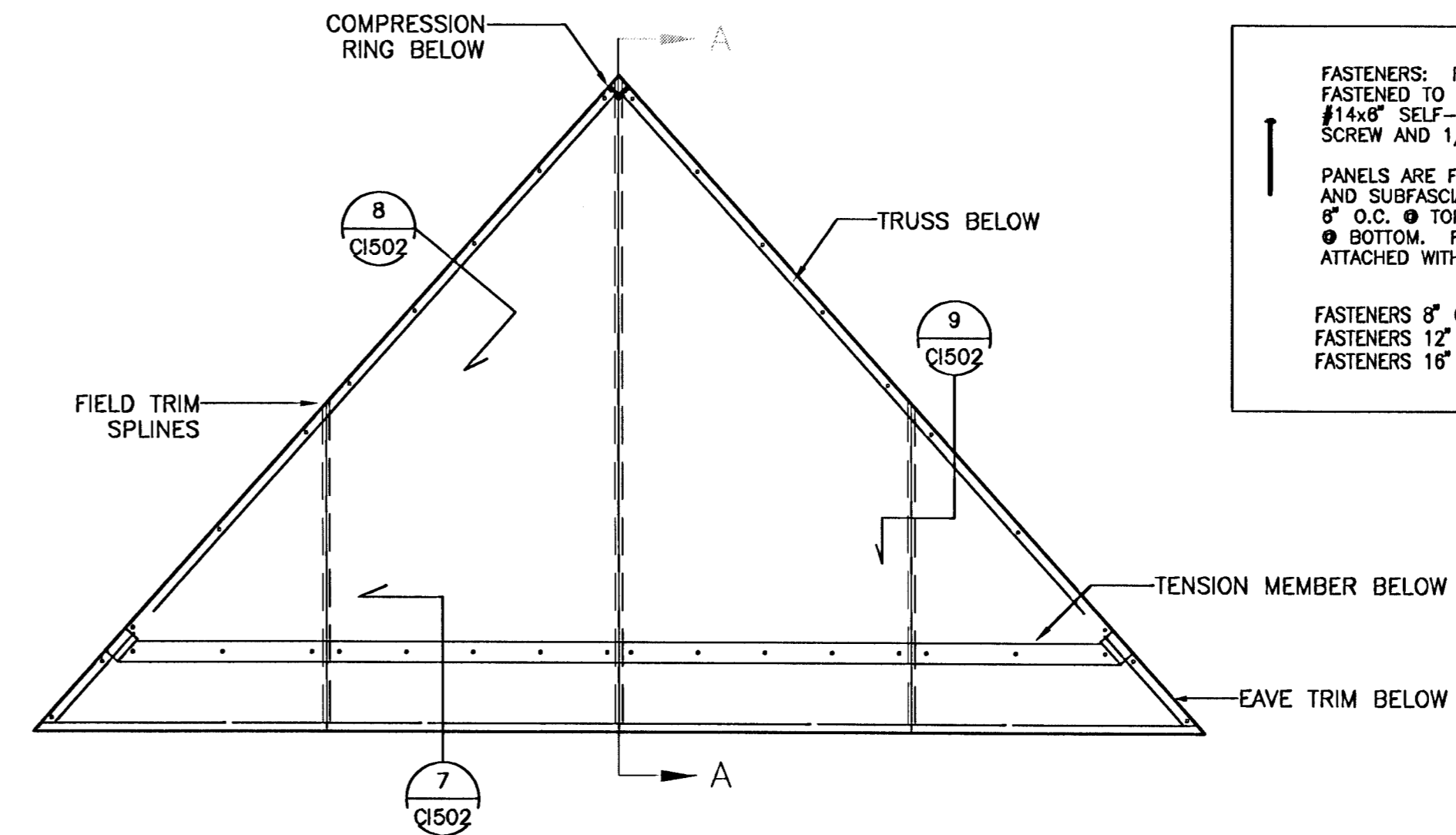
MATERIAL SPECIFICATIONS
COLUMN SIZE: TS 5"x5"

TUBULAR SHAPES: ASTM A500 GRADE B 46 KSI
COLD FORMED CEES: A570 GRADE 55
CONNECTION BOLTS: ASTM A325
CONNECTION PLATES: ASTM A36
ANCHOR BOLTS: ASTM A307
WELDING PROCESS: GAS METAL ARC WELDING
WELDING ELECTRODES: E70xx



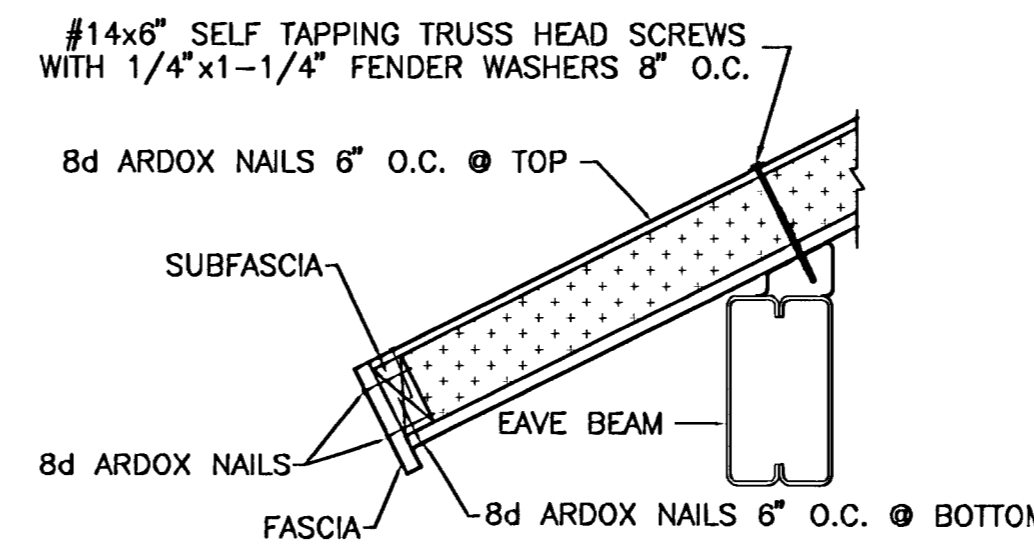
5 FRAME ELEVATION
NOT TO SCALE

NO	QTY	DESCRIPTION
1	4	COLUMN (TS5X5)
2	4	TRUSS
3	4	TENSION MEMBER
4	4	TRUSS TAIL
5	1	COMPRESSION RING

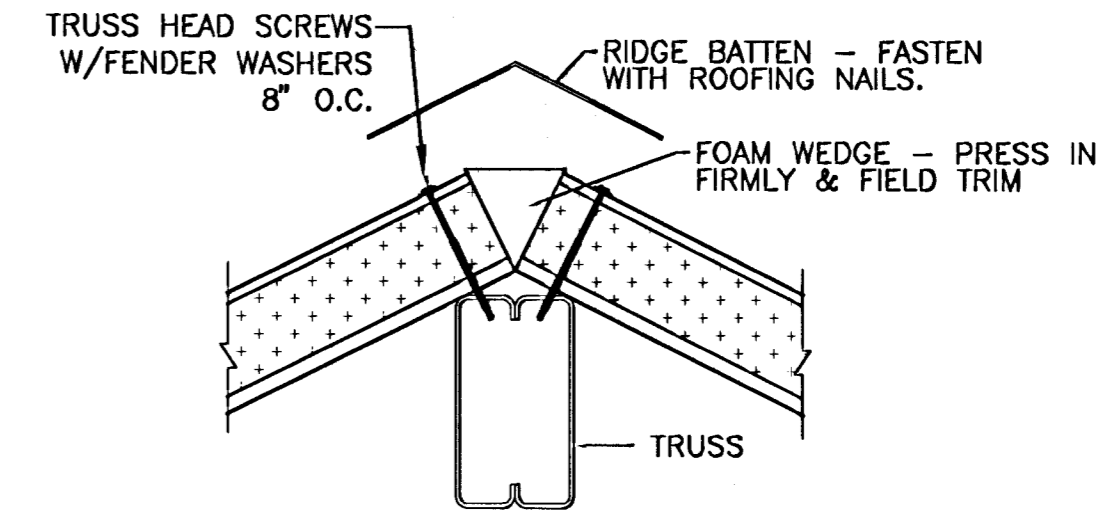


6 ROOF PANEL PLAN
NOT TO SCALE

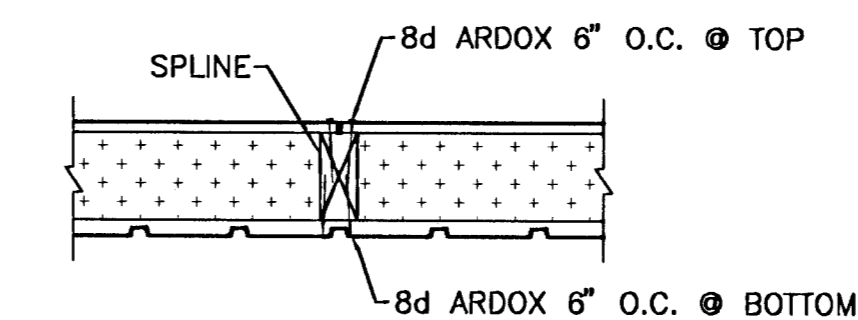
FASTENERS: ROOF PANELS ARE FASTENED TO STEEL FRAME WITH #14x6" SELF-TAPPING TRUSS HEAD SCREW AND 1/4" x 1-1/4" FENDER WASHERS.
PANELS ARE FASTENED TO SPLINES AND SUBFASCIA WITH 8d ARDOX 6" O.C. @ TOP AND 8d ARDOX 6" O.C. @ BOTTOM. FINISH FASCIA IS ATTACHED WITH 8d ARDOX.
FASTENERS 6" O.C. @ EAVE BEAMS
FASTENERS 12" O.C. @ TRUSSES & TAILS
FASTENERS 16" O.C. @ RIDGE BEAM



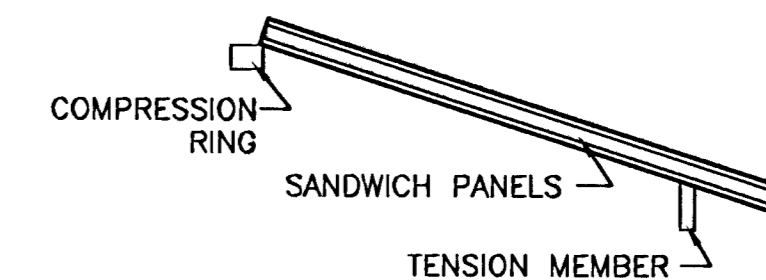
7 SECTION AT EAVE BEAM CONNECTION
NOT TO SCALE



8 SECTION AT TRUSS CONNECTION
NOT TO SCALE



9 SECTION AT PANEL CONNECTION
NOT TO SCALE



10 ROOF SECTION
NOT TO SCALE



GROVE PARK IMPROVEMENTS
PROJECT NAME
PICNIC SHELTER DETAILS
SHEET TITLE
DESIGN BY: LES
DRAWN BY: JDM
CHECKED BY: JDM
DATE: OCTOBER 2001
JOB NO.: 1003.010
SHEET/OF: C1502 / 50