

PAVING PLANS FOR DOUGLAS AVE STREETSCAPES

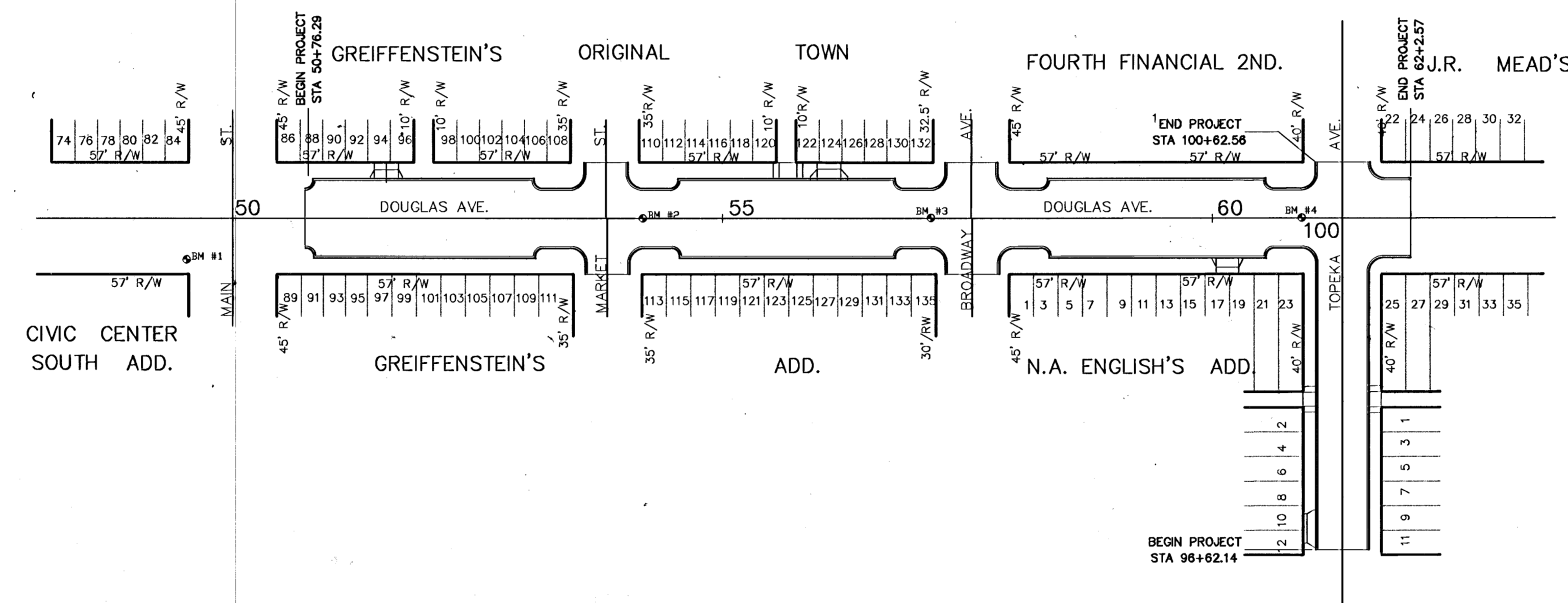
PROJECT NO. 472-82655

CITY OF WICHITA, KANSAS
MICHAEL E. LINDEBAK, CITY ENGINEER

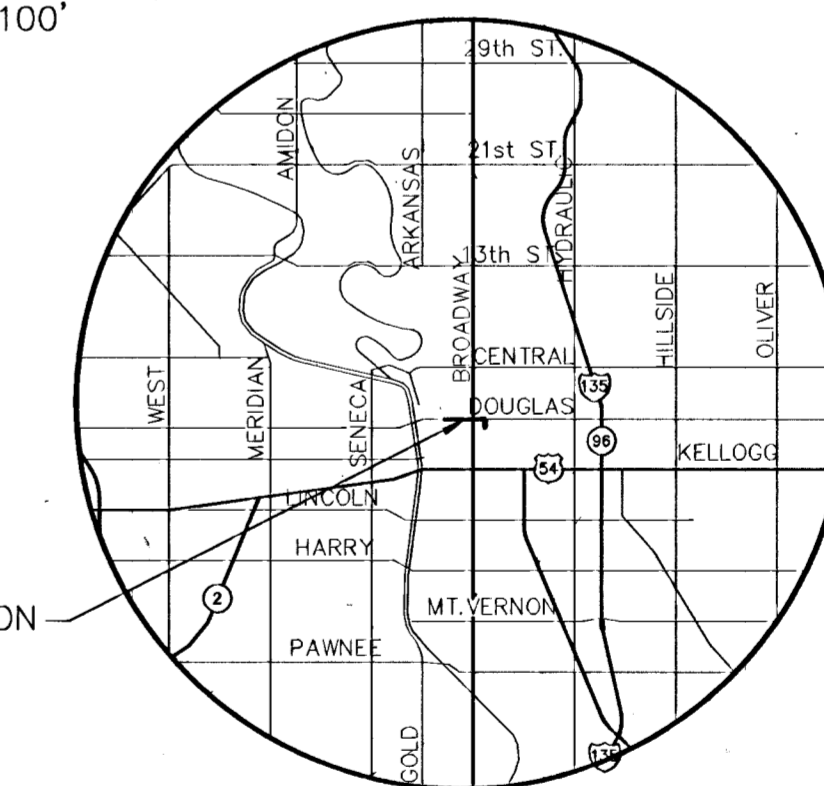
INDEX NO. 000000

BENCHMARKS

- BM #1 TOP EDGE OF NE ANCHOR BOCT OF TRAFFIC SIGNAL
POLE BASE ON SW COR. MAIN AND DOUGLAS
ELEV. = 112.41
- BM #2 EXIST. "T" CUT ON TC ON CL WEST END MEDIAN,
CL OF DOUGLAS & EAST SIDE OF MARKET.
ELEV. = 112.23
- BM #3 "T" CUT ON TC ON EAST END MEDIAN,
CL OF DOUGLAS & WEST SIDE OF BROADWAY.
ELEV. = 111.53
- BM #4 EXIST. "T" CUT ON TC EAST END MEDIAN,
CL OF DOUGLAS & WEST SIDE OF TOPEKA.
ELEV. = 110.50
- BM #5 "T" CUT ON NE COR. LIGHT POLE BASE 12' S
AND 197' E OF @ WILLIAM AND @ TOPEKA
ELEV. = 112.50



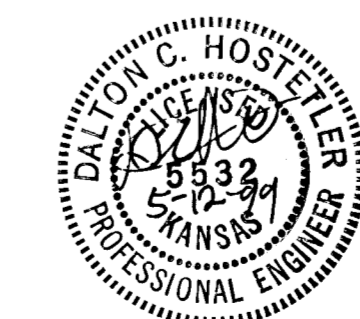
SCALE: 1"=100'



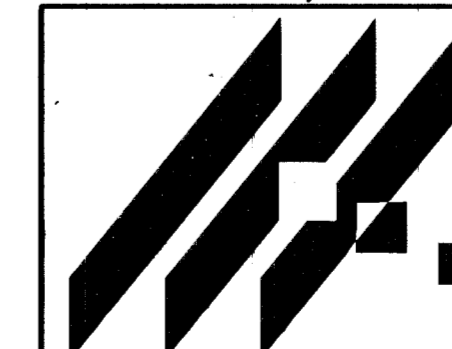
CITY OF WICHITA

INDEX TO DRAWINGS

| SHEET NO. | DESCRIPTION |
|-----------|--|
| 1 | TITLE SHEET |
| 2 | GENERAL NOTES & DETAILS |
| 3 | PAVING DETAILS |
| 4 | JOINT PLAN |
| 5 | ENTRANCE & ALLEY PAVING DETAILS |
| 6 | 3RD. DRIVE ENTRANCES |
| 7-10 | PAVING PLANS |
| 11 | VALVE BOX AND MANHOLE ADJUSTMENTS |
| 12-13 | STORM WATER SEWER PROFILES |
| 14-16 | SPECIAL TYPE II CURB INLET |
| 17 | PAVEMENT MARKINGS |
| 18 | SIGNING |
| 19 | SIGNING DETAIL |
| 20-25 | TRAFFIC SIGNAL PLANS & WIRING PLANS |
| 26-29 | TRAFFIC SIGNAL DETAILS |
| (LS 1.01) | LAYOUT AND MATERIALS - DOUGLAS AVE. @ 45+00 TO 53+00 |
| (LS 1.02) | LAYOUT AND MATERIALS - DOUGLAS AVE. @ 53+00 TO 59+00 |
| (LS 1.03) | LAYOUT AND MATERIALS - DOUGLAS AVE. @ 59+00 TO 63+50 |
| (LS 1.04) | LAYOUT AND MATERIALS - TOPEKA AVE. @ 96+00 TO 102+00 |
| (LS 2.01) | IRRIGATION PLAN - DOUGLAS AVE. @ 45+00 TO 53+00 |
| (LS 2.02) | IRRIGATION PLAN - DOUGLAS AVE. @ 53+00 TO 59+00 |
| (LS 2.03) | IRRIGATION PLAN - DOUGLAS AVE. @ 59+00 TO 63+50 |
| (LS 2.04) | IRRIGATION PLAN - TOPEKA AVE. @ 96+00 TO 102+00 |
| (LS 3.01) | PLANTING PLAN - DOUGLAS AVE. @ 45+00 TO 53+00 |
| (LS 3.02) | PLANTING PLAN - DOUGLAS AVE. @ 53+00 TO 59+00 |
| (LS 3.03) | PLANTING PLAN - DOUGLAS AVE. @ 59+00 TO 63+50 |
| (LS 3.04) | PLANTING PLAN - TOPEKA AVE. @ 96+00 TO 102+00 |
| (LS 4.01) | INTERSECTION ENLARGEMENT - DOUGLAS @ MARKET |
| (LS 4.02) | INTERSECTION ENLARGEMENT - DOUGLAS @ TOPEKA |
| (LS 5.01) | SIDEWALK SECTIONS |
| (LS 6.01) | PAVEMENT DETAILS |
| (LS 6.02) | PAVEMENT DETAILS |
| (LS 6.03) | TOWER DETAILS |
| (LS 6.04) | NEWSPAPER STAND ENCLOSURE |
| (LS 6.05) | STREET FURNISHINGS DETAILS |
| (LS 7.01) | IRRIGATION DETAILS |
| (LS 8.01) | PLANTING DETAILS |
| (LS 9.01) | VESTPOCKET PARK |
| (LS 9.02) | SCHED. LES. AND RISER |
| (LS 9.03) | POWER PLAN - DOUGLAS AVE. @ 50+00 TO 53+00 |
| (LS 9.04) | POWER PLAN - DOUGLAS AVE. @ 53+00 TO 59+00 |
| (LS 9.05) | POWER PLAN - DOUGLAS AVE. @ 59+00 TO 62+00 |
| (LS 9.06) | POWER PLAN - TOPEKA AVE. @ 96+50 TO 99+50 |
| (LS 9.07) | MISC. SIGNAL DETAILS |
| (LS 9.08) | SCULPTURE LOCATIONS |
| (LS 9.09) | FOUNTAIN DETAILS |
| (LS 9.10) | FOUNTAIN SCHEMATICS |



REVISED 4/99



STREETSCAPES
PROJECT NAME

TITLE SHEET
SHEET TITLE

MID-KANSAS ENGINEERING
CONSULTANTS, INC.
411 N. WEBB ROAD
WICHITA, KS. 67206
316-684-9600

DESIGN BY: DCH DRAWN BY: RLB CHECKED BY: DCH

DATE: 92010 JOB NO. 1 / 61 SHEET OF