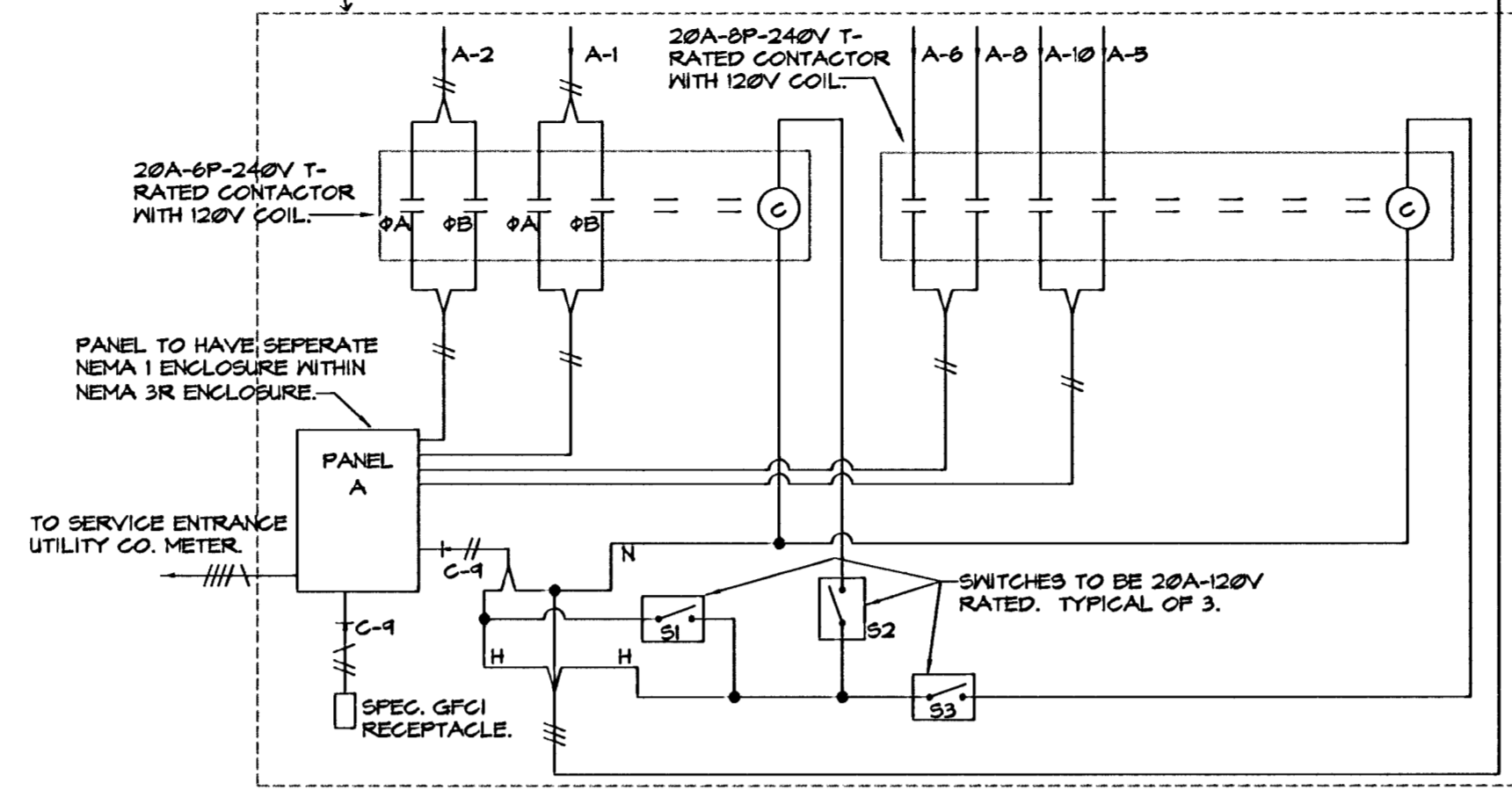


PHOTOCELL TO BE MOUNTED AT TOP OF LIGHT FIXTURE A1 AND ORIENTED TO THE NORTH. VERIFY ALL REQUIREMENTS PRIOR TO BID.

MILLBANK #CP3B-4100-215-A225P-BLACK COMMERCIAL METER PEDISTAL WITH METER SOCKET, PANEL, CONTACTORS AND SWITCHES AS SHOWN. VERIFY ALL REQUIREMENTS PRIOR TO BID WITH MANUFACTURER AND UTILITY CO.

SEE SITE PLAN FOR WIRING AND CONDUIT SIZING.



ALL WIRING TO BE #12 MINIMUM, ALL CONDUIT TO BE 3/4" MINIMUM UNLESS NOTED OTHERWISE.

**CONTROL CABINET "A" WIRING DETAIL**

NO SCALE

TYPICAL SWITCH 'S1', 'S2' & 'S3' OPERATION.  
 SWITCH S1 BYPASSES PHOTOCELL.  
 SWITCH S2 ACTIVATES/DEACTIVATES POLE LIGHTING.  
 SWITCH S3 ACTIVATES/DEACTIVATES RECEPTACLES.

**BRANCH CIRCUIT PANEL SUMMARY**

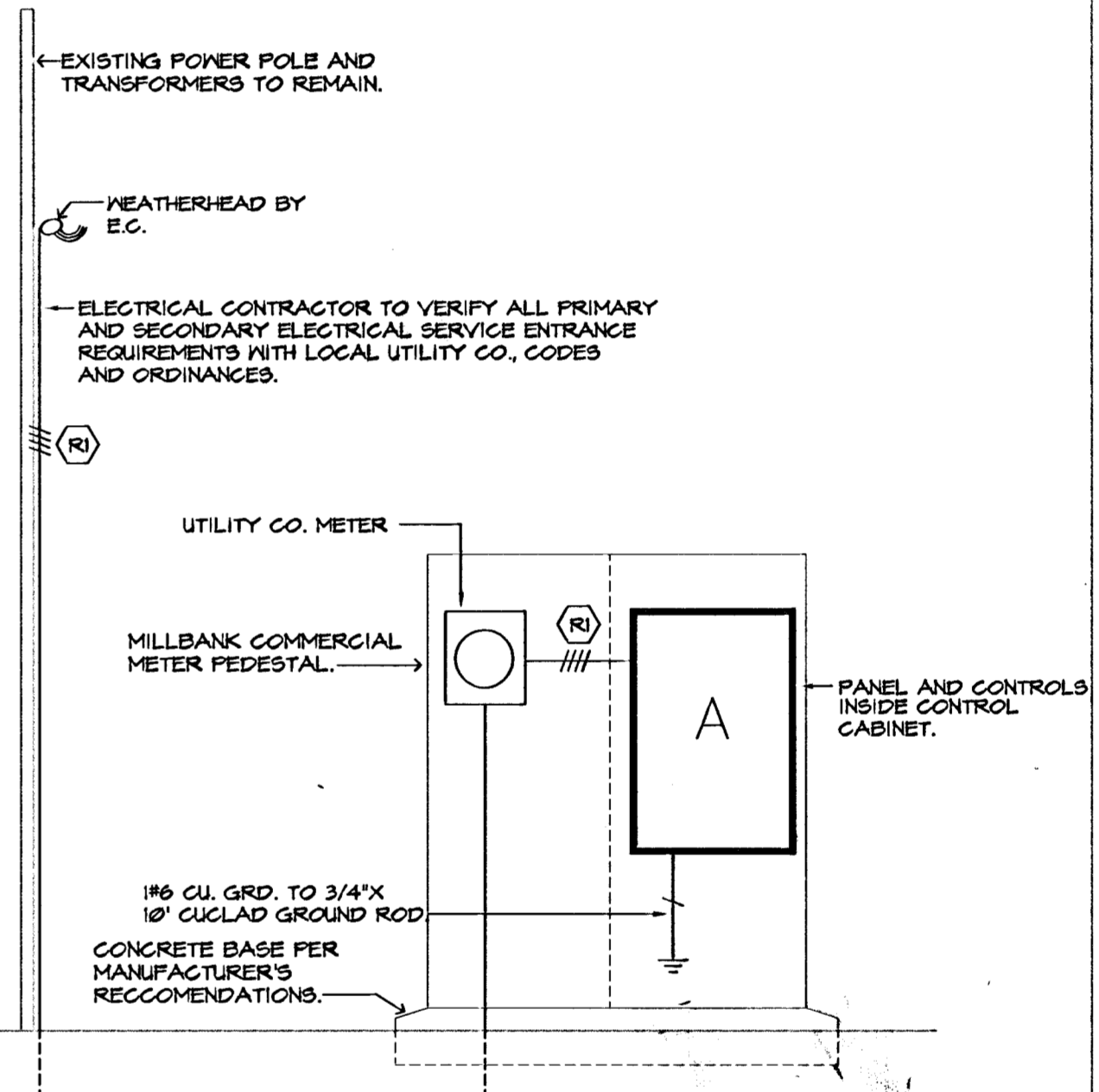
PANEL DESIG	120/240V 3P/4W 277/480V 3P/4W	MANS RATING (AMPS)	MOUNTING	BRANCH CIRCUIT BREAKERS (AMPS/POLE)						SUPPLY DEVICE RATING (AMP/FUSE)	CIRCUIT NUMBER	FEEDER IDENT.
				MLO	EKR	S	F	STATUS	NO			
A				100							100/100	RI

**RISER FEEDER SCHEDULE**

FEEDER IDENT.	CONDUCTORS		GROUND SIZE PER SET	ISOLATED GROUND SIZE PER SET	CONDUIT SIZE PER SET
	SETS	QUANT. PER SET			
RI	1	4	#3 THIN	-----	2"

**GENERAL NOTES:**

1. ALL CONDUITS TO BE ROUTED MINIMUM 30" BELOW GRADE.
2. E.G. SHALL VISIT JOBSITE PRIOR TO BID AND VERIFY ALL EXISTING CONDITIONS AND REQUIREMENTS.
3. E.G. TO CLOSELY COORDINATE ELECTRICAL INSTALLATION WITH PAVING AND CONCRETE WORK ON THIS PROJECT.
4. E.G. TO VERIFY ALL SERVICE ENTRANCE CONNECTIONS REQUIREMENTS WITH K.G.I.E. PRIOR TO BID.
5. NEW LIGHT FIXTURES "A" & "B" TO RESEMBLE EXISTING FIXTURES AS INSTALLED IN OLD TOWN AREA.
6. ALL CONDUITS BELOW GRADE TO BE SCH. 40 P.V.C. WITH STEEL ELLS AND RISERS.
7. ALL POLE BASES, SPECIAL OUTLET "A" BASES AND CONCRETE WORK ASSOCIATED WITH ELECTRICAL INSTALLATION TO BE THE RESPONSIBILITY OF THE ELECTRICAL CONTRACTOR.



**ELECTRICAL SERVICE ENTRANCE RISER**

NO SCALE



Electrical Engineering and Design  
 349 S. Hydraulic  
 Wichita, Ks. 67211-1908  
 (316) 264-3061  
 FAX: (316) 264-3542

03086-041

**PUBLIC PARKING LOT IMPROVEMENTS, 132 N. MOSLEY  
 ELECTRICAL SCHEDULES  
 WICHITA, KANSAS**

<p><b>Ruggles &amp; Bohm, P.A.</b>          Engineering, Surveying, Land Planning          924 North Main          Wichita, Kansas 67203          www.rbkansas.com          (316) 264-8008          (316) 264-4621 fax          E-mail: info@rbkansas.com</p>	DESIGN SVA	SHEET <b>10</b> OF <b>11</b>
	DRAWN SVA	
	REVIEW	
	UTILITY	
DRAWING FILE 3086E02.DWG	PROJECT NUMBER	DATE July 18, 2003

472-83846