

GATE ADJUSTMENT DETAIL
NO SCALE

(This detail indicates one of two 6 foot gate sections to be adjusted.)
(See note no. 3)

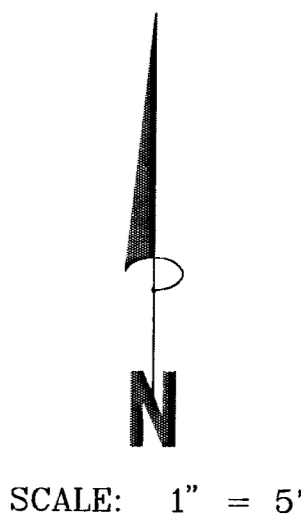
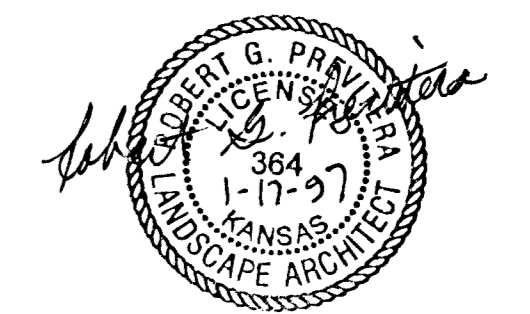
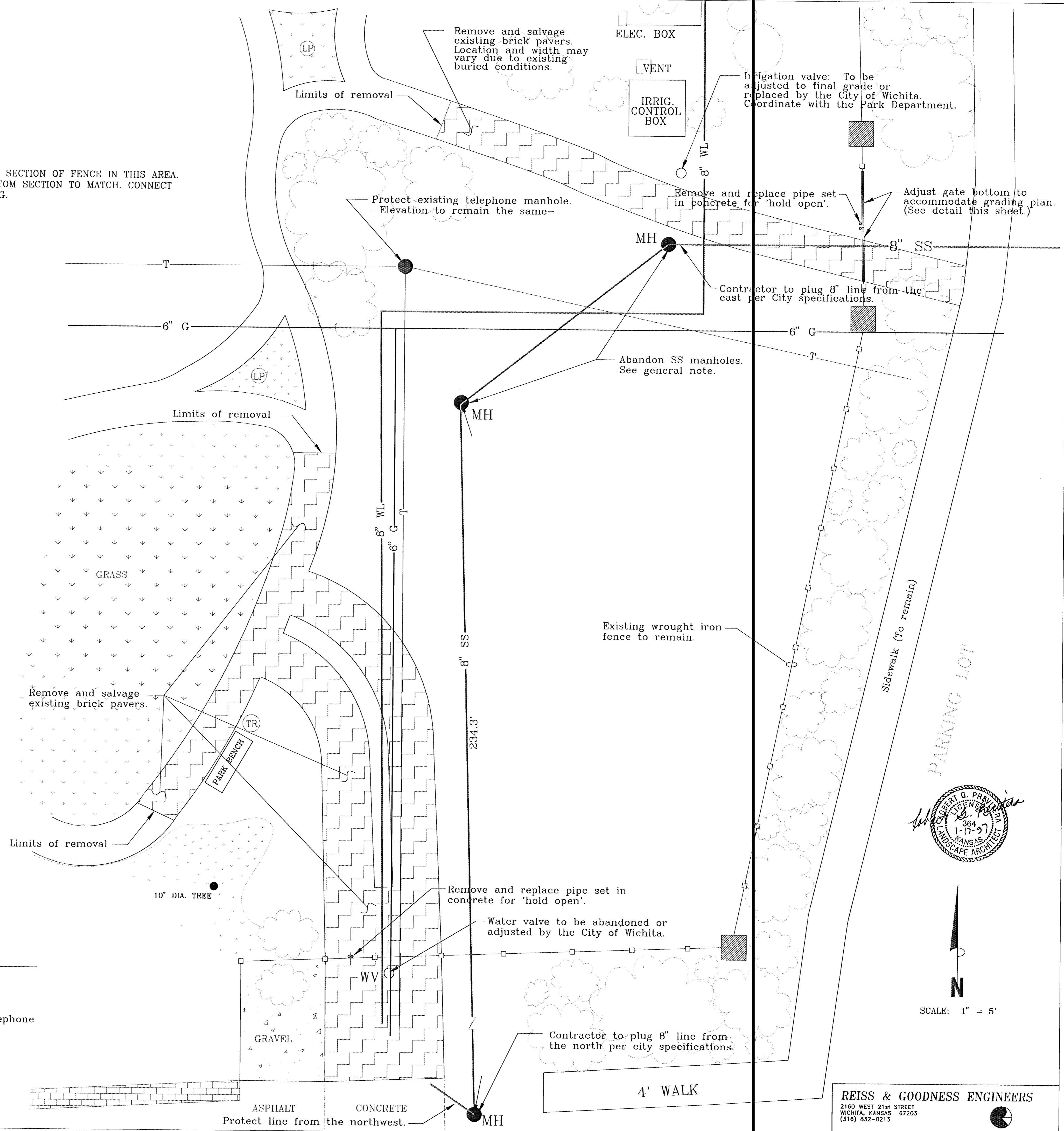
REMOVE 5' SECTION OF FENCE IN THIS AREA.
RAISE BOTTOM SECTION TO MATCH. CONNECT BY WELDING.

NOTES:

1. TWO SANITARY SEWER MANHOLES SHALL BE ABANDONED BY REMOVING THE TOP TWO FEET OF THE STRUCTURES, FILLING THE MANHOLE WITH COMPACTED SAND TO WITHIN 2 FEET OF THE FINAL SURFACE, AND SOIL COMPACTED TO 95% STANDARD DENSITY TO THE BOTTOM OF THE PROPOSED BASE COURSE (SEE PAVING DETAIL).
2. THE CITY OF WICHITA WATER DEPARTMENT WILL ABANDON THE EXISTING 8" WATER MAIN UNDER THE PROPOSED IMPROVEMENTS PRIOR TO CONSTRUCTION. CONTACT RUSSELL ROSE TO VERIFY: 268-4908.
3. ALL CUT SECTIONS OF FENCING SHALL BE LEFT SMOOTH. ANY CUT, DAMAGED, OR FABRICATED PORTIONS OF THE FENCE SHALL BE PAINTED WITH A PRIMER COAT OF A ZINC CHROMATE RUST PROHIBITOR FOLLOWED BY A NON-CHROMATE SEALER COAT AND A COAT OF BLACK ENAMEL PAINT TO MATCH THE EXISTING FENCE.

Legend

- SS Sanitary sewer
- MH Manhole
- WL Water line
- WV Water valve
- T Underground telephone
- G Gas main



REISS & GOODNESS ENGINEERS
2160 WEST 21st STREET
WICHITA, KANSAS 67205
(316) 832-0213