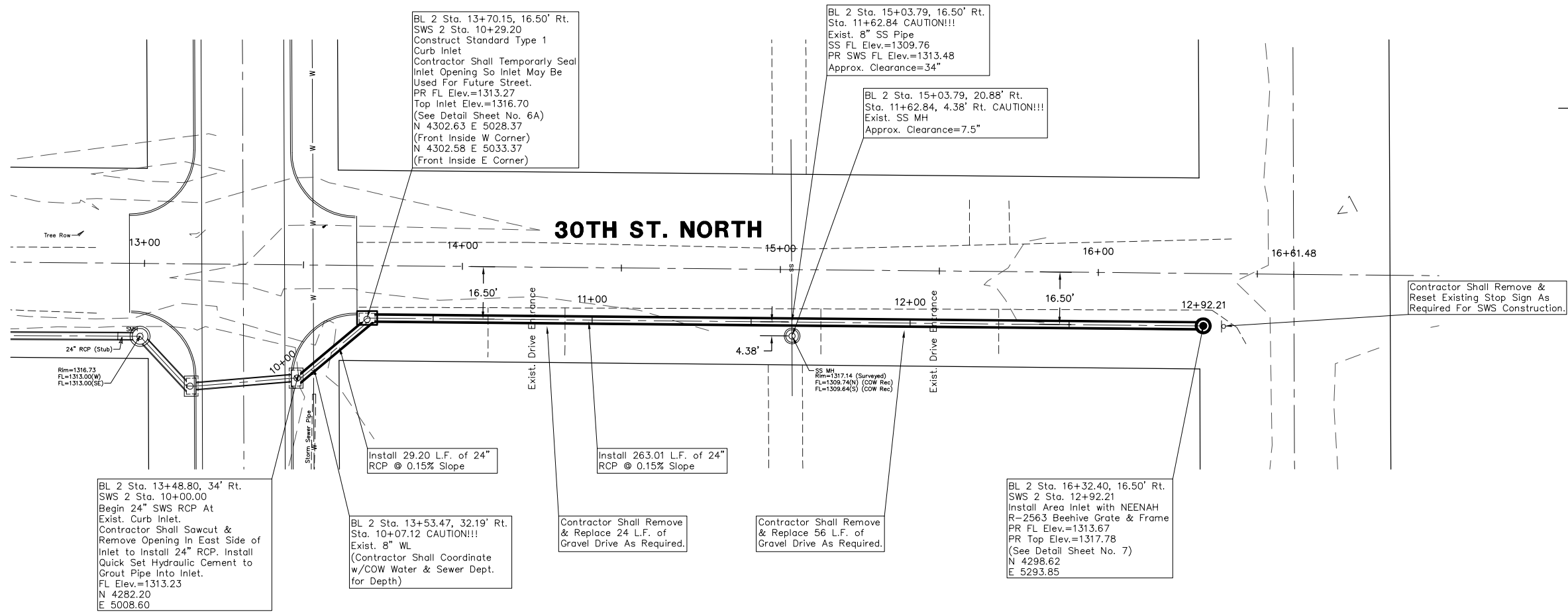


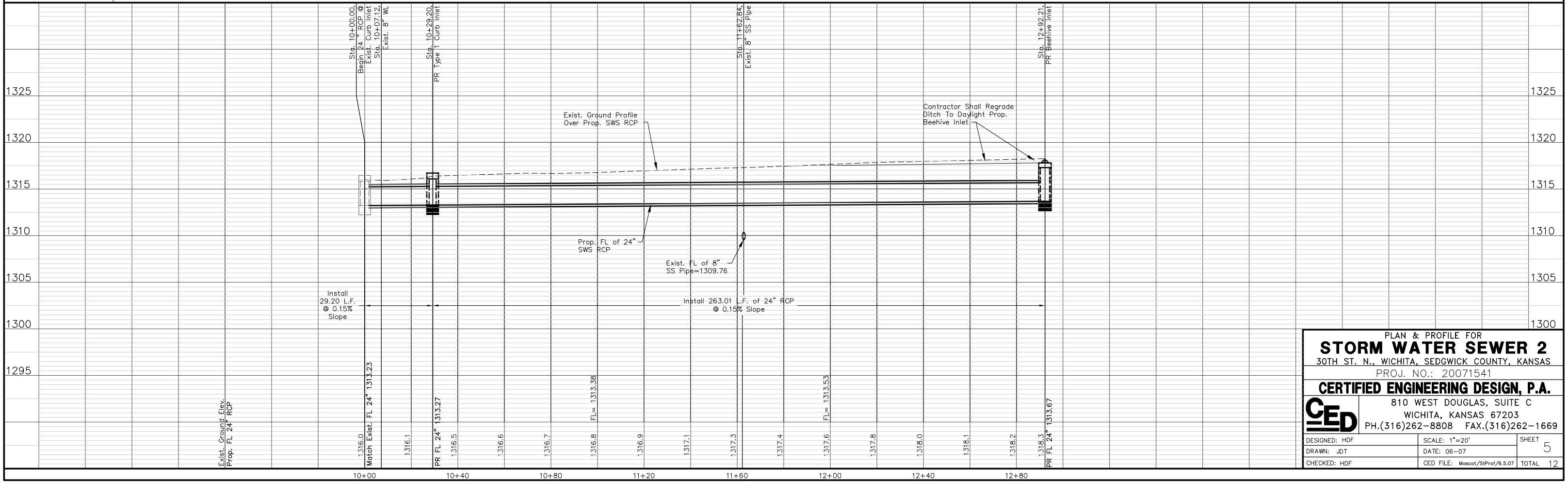
UTILITY LEGEND

= Fire Hydrant	= Flag Pole
= Water Meter	= SS Manhole
= Water Valve	= SWS Manhole
= Gas Meter	= Sign
= Gas Valve	= Misc. Post
= Telephone Riser	= Guy Anchor
= Mailbox	= Power Pole
= Light Pole	= Deciduous Tree or Shrub
= Existing Fence	= Right of Way Line
= Underground Telephone	= Underground Electric
= Overhead Electric	= Water Line
= Sanitary Sewer	= Gas Line
= Cable TV or Fiber Optic	

UTILITIES SHOWN REPRESENT THE BEST INFORMATION AVAILABLE FOR DESIGN. ADDITIONAL UTILITIES MAY BE PRESENT ON THIS PROJECT. THE CONTRACTOR SHALL BE RESPONSIBLE FOR DETERMINING THE EXACT LOCATION, DEPTH AND SIZE OF ALL UNDERGROUND UTILITIES PRIOR TO CONSTRUCTION. THE CONTRACTOR SHALL BE LIABLE FOR ANY DAMAGE CAUSED BY THE FAILURE TO DO SO.



STORM WATER SEWER PROFILE No. 2



PLAN & PROFILE FOR
STORM WATER SEWER 2
 30TH ST. N., WICHITA, SEDGWICK COUNTY, KANSAS
 PROJ. NO.: 20071541
CERTIFIED ENGINEERING DESIGN, P.A.
 810 WEST DOUGLAS, SUITE C
 WICHITA, KANSAS 67203
 PH.(316)262-8808 FAX.(316)262-1669

DESIGNED: HDF	SCALE: 1"=20'	SHEET
DRAWN: JOT	DATE: 06-07	5
CHECKED: HDF	CED FILE: Mascot/SIProt/6.5.07	TOTAL 12

Baseline 2 Stationing(BL 2)=
ROW CL 30th Street N.