

PAVING PLANS FOR KRUG SOUTH ADDITION

PROJECT NO. 472-84521

THE CITY OF WICHITA, KANSAS
JAMES L. ARMOUR, CITY ENGINEER

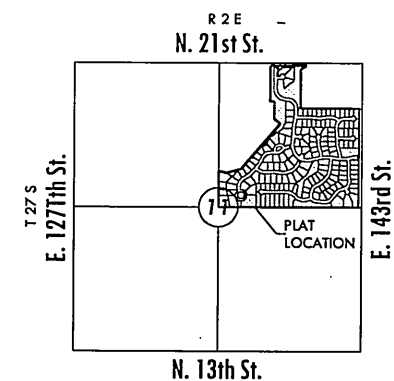
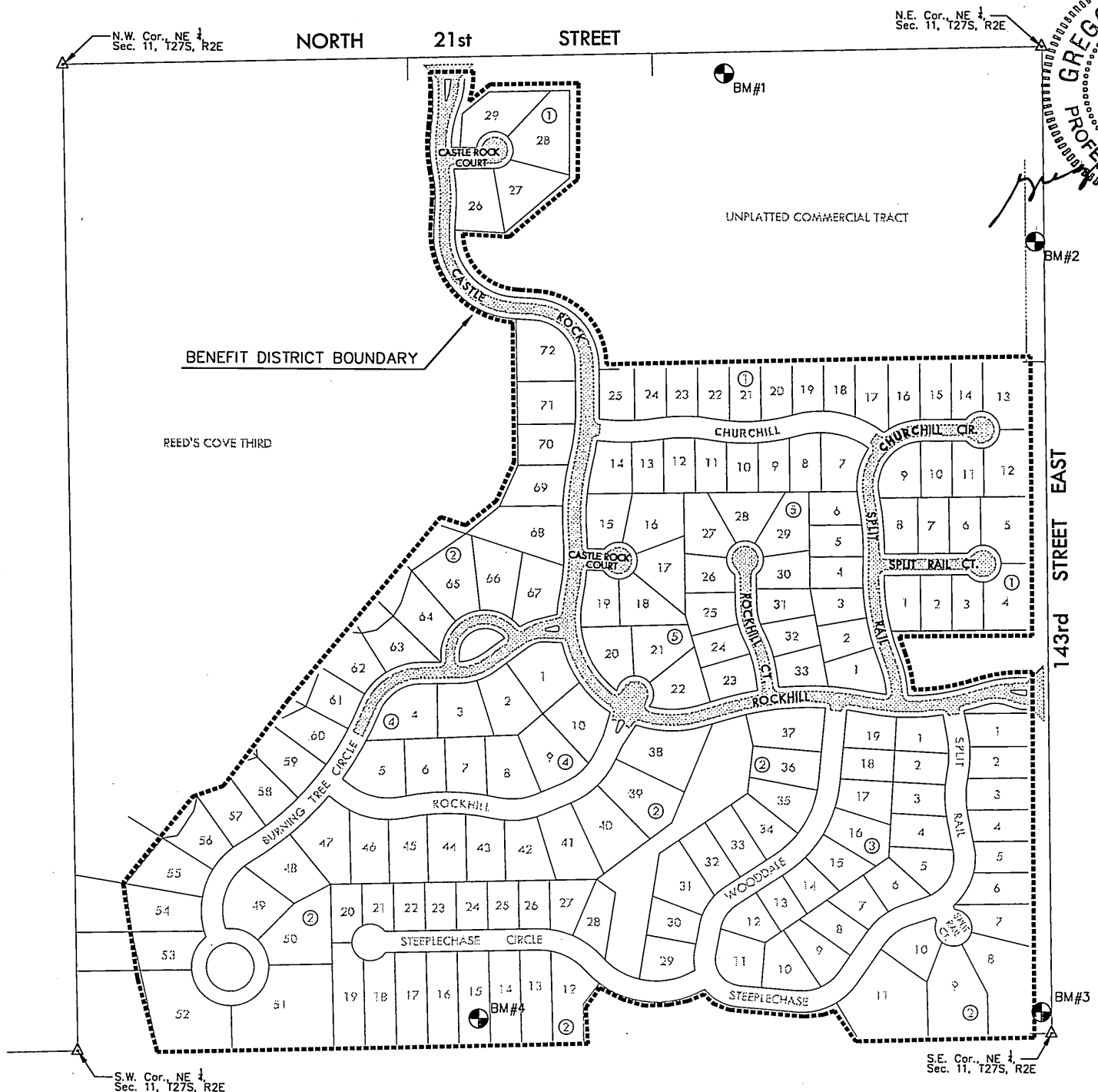
OCA NO. 766128

Castle Rock/Rockhill : From the south line of 21st Street North to the west line of 143rd Street East;
 Castle Rock Court : Serving Lots 26 through 29, Block 1, from the east line of Castle Rock to and including the cul-de-sac;
 Castle Rock Court : Serving Lots 15 through 19, Block 5, from the east line of Castle Rock to and including the cul-de-sac;
 Rockhill Court : Serving Lots 23 through 33, Block 5, from the north line of Rockhill to and including the cul-de-sac;
 Split Rail/Churchill Circle : Serving Lots 1 through 16, Block 1 and Lots 1 through 6, Block 5 from the north line of Rockhill to and including the cul-de-sac;
 Split Rail Court : Serving Lots 1 through 8, Block 1 from the east line of Split Rail to and including the cul-de-sac;
 Burning Tree/Burning Tree Court : From the south line of Lot 61, Block 2 to the west line of Castle Rock.

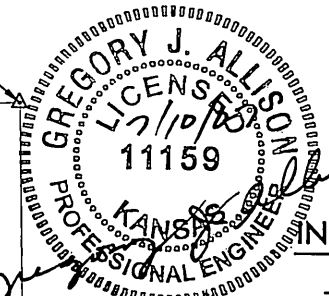
GENERAL NOTES

- UNLESS SHOWN OR STATED OTHERWISE ON THESE DRAWINGS, MATERIALS AND CONSTRUCTION SHALL BE IN ACCORDANCE WITH CITY OF WICHITA CONCRETE PAVEMENT AND ASPHALTIC CONCRETE PAVEMENT SPECIFICATIONS.
- CONTRACTOR WILL BE REQUIRED TO PROVIDE A MINIMUM ADVANCE NOTICE OF SEVENTY-TWO (72) HOURS TO UTILITY COMPANIES PRIOR TO STARTING ANY EXCAVATION AS FOLLOWS:
 KANSAS ONE-CALL 1-800-344-7233
 OR 687-2470 (LOCAL WICHITA)
- THE CONTRACTOR MUST NOTIFY THE FOLLOWING IN CASE OF AN EMERGENCY:
 SBC (TELEPHONE) 800-870-8390
 COX COMMUNICATIONS (CABLE) 262-0661
 WESTAR (ELECTRIC) 383-8600
 KANSAS GAS SERVICE (GAS) 832-3101
 CITY OF WICHITA WATER & SEWER MAINT. 262-6000
 AQUILA (GAS) 800-303-0357
- THE CONTRACTOR SHALL BE RESPONSIBLE FOR PRESERVING PROPERTY IRONS. THE CONTRACTOR WILL BE REQUIRED TO RE-ESTABLISH ANY PROPERTY IRONS WHICH ARE DAMAGED OR DESTROYED BY HIS CONSTRUCTION OPERATIONS. SUCH IRONS SHALL BE RE-ESTABLISHED BY A LICENSED LAND SURVEYOR IN ACCORDANCE WITH STATE LAWS.
- EXISTING UTILITIES AND THEIR LOCATIONS, AS SHOWN ON THE PLANS REPRESENT THE BEST INFORMATION OBTAINABLE FOR DESIGN. LOCATION INFORMATION HAS BEEN OBTAINED FROM THE VARIOUS UTILITY COMPANIES AND IS EITHER FROM COMPANY RECORD DRAWINGS OR COMPANY PROVIDED FIELD LOCATIONS. THE PLAN LOCATIONS SHOWN ARE NOT GUARANTEED. ADDITIONAL EXISTING UTILITIES MAY ALSO BE ENCOUNTERED.
- RUBBLE FROM THE REMOVAL OF MISCELLANEOUS STRUCTURES AND EXCESS EXCAVATION WHICH IS TO BE WASTED SHALL BE DISPOSED OF ON SITES TO BE PROVIDED BY THE CONTRACTOR. THESE SITES SHALL BE APPROVED BY THE ENGINEER AS TO SUITABILITY, APPEARANCE AND SITE LOCATION. LOCATIONS THAT, IN THE OPINION OF THE ENGINEER, WILL LEAVE AN UNSIGHTLY APPEARANCE WILL NOT BE APPROVED. ALL DISPOSAL SITES MUST BE APPROVED BY THE KANSAS DEPARTMENT OF HEALTH AND ENVIRONMENT. MATERIAL EITHER STOCKPILED OR DISPOSED OF IN A FLOOD PLAIN WOULD REQUIRE A KANSAS STATE BOARD OF AGRICULTURE PERMIT. ANY MATERIAL DUMPED IN WATERS OF THE UNITED STATES OR WETLANDS IS SUBJECT TO U.S. CORPS OF ENGINEERS PERMITTING REGULATIONS. ANY MATERIAL BURIED OR STOCKPILED BEYOND APPROVED CONSTRUCTION LIMITS WOULD REQUIRE ADDITIONAL ARCHAEOLOGICAL INVESTIGATIONS UNLESS BURIED IN A PREVIOUSLY APPROVED BORROW LOCATION.
- THIS PROJECT INCLUDES A CERTAIN AMOUNT OF ROLL TYPE CURB CONSTRUCTION. ROLL CURBS SHALL BE DEPRESSED THROUGH ALL DRIVEWAY OPENINGS WHEN SUCH DRIVES ARE CONSTRUCTED AS A PART OF THE PROJECT. NO MORE THAN 2 DRIVES 20 FEET IN WIDTH OR EQUIVALENT COMBINATIONS THEREOF ARE TO BE CONSTRUCTED WITH THIS PROJECT.
- TRANSITION CURB FROM FULL HEIGHT COMBINATION CURB AND GUTTER TO ROLL TYPE COMBINATION CURB AND GUTTER IS TO BE PAID AS BID FOR LINEAL FEET COMBINED CURB AND GUTTER (3 5/8" ROLL).
- A SAW CUT OF AT LEAST ONE-HALF THE DEPTH OF THE EXISTING SURFACE COURSES OR ONE-FOURTH THE DEPTH OF THE EXISTING TOTAL PAVEMENT THICKNESS SHALL BE PROVIDED AT LOCATIONS WHERE PROPOSED CONSTRUCTION ABUTS AN EXISTING SURFACE OR PAVEMENT FOR WHICH PARTIAL REMOVAL OF THAT SURFACE OR PAVEMENT IS REQUIRED. SAW JOINT TO FACILITATE REMOVAL WITHIN THREE (3) FEET OF EXISTING JOINTS WILL NOT BE PERMITTED AND FOR SUCH INSTANCES THE LIMITS OF REMOVAL SHALL EXTEND TO THE EXISTING JOINT. SUCH SAW CUTS WILL NOT BE PAID FOR DIRECTLY AND THIS COST SHALL BE CONSIDERED AS SUBSIDIARY TO THE REMOVAL OF SURFACE OR PAVEMENT.
- ADJUST VALVE BOX TOPS TO MATCH FINISHED GRADE. COST SUBSIDIARY TO PROJECT.

PROJECT LENGTH	
Castle Rock/Rockhill	3108 L.F.
Castle Rock Ct. (N)	106 L.F.
Castle Rock Ct. (S)	81 L.F.
Rockhill Ct.	354 L.F.
Split Rail/Churchill Circle	957 L.F.
Split Rail Ct.	261 L.F.
Burning Tree Circle	656 L.F.
Burning Tree Ct.	239 L.F.
TOTAL	5792 L.F.
EARTHWORK SUMMARY*	
EXCAVATION	3500 C.Y.
COMP. FILL (95%)	3050 C.Y.
15% SHRINK/SWELL FACTOR ADDED	



VICINITY MAP



INDEX TO DRAWINGS

SHEET NO.	DESCRIPTION
1	TITLE SHEET
2-9	DETAILS
10-15	CASTLE ROCK
16	CASTLE ROCK CT.
17	CASTLE ROCK & ROCKHILL CT.
18	ROCKHILL CT.
19-20	SPLIT RAIL
21	SPLIT RAIL CT.
22-25	BURNING TREE CIRCLE
26	STORM SEWER LINE 1
27	SIDEWALK PLAN
28	BUBBLE MAP
29	SEEDING & EROSION CONTROL
30-34	BMP DETAILS
35-53	CROSS SECTIONS
54-55	PLAT

BENCHMARKS

- Datum BM \square at NE corner of Inlet on S. side of Williamsgate over bridge in Hawthorne Addition.
Elev. = 1355.74 (NGVD 29)
- BM#1 RR spike in S. face of PP, 3rd PP W. of 143rd St. (799' from CL) S. side of 21st St. (49' from CL)
Elev. = 1362.17 (NGVD 29)
- BM#2 FH NE bolt w/ tag on top of flange, W. side of 143rd St. NW of drive. (23' from CL)
Elev. = 1382.81 (NGVD 29)
- BM#3 RR spike in N. face of HLP in N. pole, the first HLP w. of E. 143rd St.
Elev. = 1370.25 (NGVD 29)
- BM#4 RR spike in N. face of HLP in N. pole, the third HLP west of E. 143rd St.
Elev. = 1358.43 (NGVD 29)

MKEC
ENGINEERING
CONSULTANTS, INC.
411 N. WEBB ROAD
WICHITA, K.S. 67206
316-684-9600

PAVING PLANS
KRUG SOUTH ADDITION
 PHASE 1

TITLE SHEET
SHEET TITLE
472-84521
PROJECT NUMBER

DFL / KKL / GJA
DESIGNED / DRAWN / CHECKED

ISSUED
July 2007

REMOVED

SHEET NO.
1 of 55

PLOTTED: Monday, July 09, 2007 @ 03:13PM

J:\CIVIL\05291.DWG\PAVING\PHASE 1\05291_ET.DWG