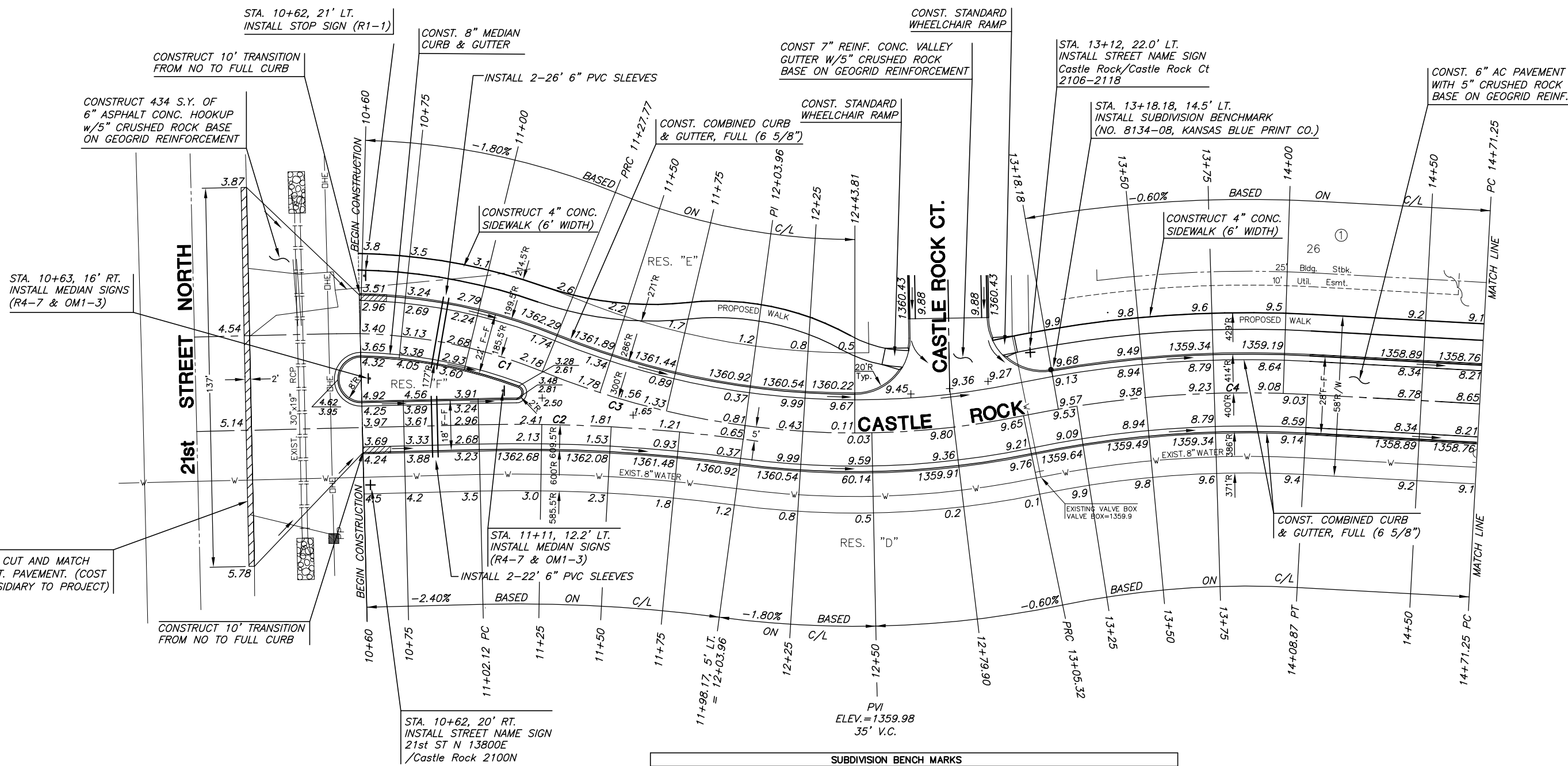


**PAVING PLANS**  
**KRUG SOUTH ADDITION**  
**PHASE 1**



**CURVE TABLE C1**

$\Delta = 20^{\circ}55'58''$  R = 185.50' T = 34.27' L = 67.77' LC = 67.40'

CURVE DATA BASED ON CENTERLINE  $\Delta / 2 = 10^{\circ}27'59''$

STATION	ARC	CHORD LENGTH		DEFLECTION	TOTAL DEFLECTION
		8' Off LtCb	8' Off RtCb		
10+60.00	-	-	-	00°00'00"	00°00'00"
10+75.00	15.00'	13.22'	16.77'	02°19'00"	02°19'00"
11+00.00	25.00'	22.02'	27.94'	03°51'39"	06°10'39"
11+25.00	25.00'	22.02'	27.94'	03°51'39"	10°02'18"
11+27.77	2.77'	2.44'	3.10'	00°25'41"	10°27'59"

Def/Ft = 9.26616 Min.

**CURVE TABLE C2**

$\Delta = 09^{\circ}01'46''$  R = 609.50' T = 48.13' L = 96.05' LC = 95.95'

CURVE DATA BASED ON CENTERLINE  $\Delta / 2 = 04^{\circ}30'53''$

STATION	ARC	CHORD LENGTH		DEFLECTION	TOTAL DEFLECTION
		8' Off LtCb	8' Off RtCb		
11+02.12	-	-	-	00°00'00"	00°00'00"
11+25.00	22.88'	23.52'	22.24'	01°04'31"	01°04'31"
11+50.00	25.00'	25.70'	24.30'	01°10'30"	02°15'02"
11+75.00	25.00'	25.70'	24.30'	01°10'30"	03°25'32"
11+98.17	23.17'	23.82'	22.53'	01°05'21"	04°30'53"

Def/Ft = 2.82014 Min.

**CURVE TABLE C3**

$\Delta = 33^{\circ}54'31''$  R = 300.00' T = 91.46' L = 177.55' LC = 174.97'

CURVE DATA BASED ON CENTERLINE  $\Delta / 2 = 16^{\circ}57'16''$

STATION	ARC	CHORD LENGTH		DEFLECTION	TOTAL DEFLECTION
		8' Off LtCb	8' Off RtCb		
11+27.77	-	-	-	00°00'00"	00°00'00"
11+50.00	22.23'	20.60'	23.85'	02°07'22"	02°07'22"
11+75.00	25.00'	23.16'	26.83'	02°23'14"	04°30'36"
12+00.00	25.00'	23.16'	26.83'	02°23'14"	06°53'51"
12+25.00	25.00'	23.16'	26.83'	02°23'14"	09°17'05"
12+50.00	25.00'	23.16'	26.83'	02°23'14"	11°40'20"
12+75.00	25.00'	23.16'	26.83'	02°23'14"	14°03'34"
13+00.00	25.00'	23.16'	26.83'	02°23'14"	16°26'48"
13+05.32	5.32'	4.93'	5.70'	00°30'27"	16°57'16"

Def/Ft = 5.72958 Min.

**CURVE TABLE C4**

$\Delta = 14^{\circ}49'56''$  R = 400.00' T = 52.07' L = 103.55' LC = 103.26'

CURVE DATA BASED ON CENTERLINE  $\Delta / 2 = 07^{\circ}24'58''$

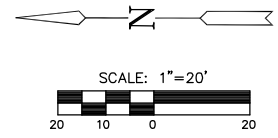
STATION	ARC	CHORD LENGTH		DEFLECTION	TOTAL DEFLECTION
		8' Off LtCb	8' Off RtCb		
13+05.32	-	-	-	00°00'00"	00°00'00"
13+25.00	19.68'	20.76'	18.60'	01°24'34"	01°24'34"
13+50.00	25.00'	26.37'	23.62'	01°47'26"	03°12'00"
13+75.00	25.00'	26.37'	23.62'	01°47'26"	04°59'26"
14+00.00	25.00'	26.37'	23.62'	01°47'26"	06°46'51"
14+08.87	8.87'	9.36'	8.38'	00°38'07"	07°24'58"

Def/Ft = 4.29718 Min.

**SUBDIVISION BENCH MARKS**

NO.	STREET AND STATION	FROM CL	DESCRIPTION	ELEVATIONS
1	CASTLE ROCK, STA. 13+18.18	14.5' LT	TOP OF CURB AT S. END OF CURB RETURN OF VALLEY GUTTER	
2	CASTLE ROCK, STA. 22+74.61	17.5' LT	TOP OF CURB AT S. END OF CURB RETURN OF VALLEY GUTTER	
3	ROCKHILL, STA. 30+25.82	17.5' RT	TOP OF CURB AT W. END OF CURB RETURN OF VALLEY GUTTER	
4	ROCKHILL, STA. 36+82.06	14.5' RT	TOP OF CURB AT E. END OF CURB RETURN OF VALLEY GUTTER	
5	SPLIT RAIL, STA. 17+46.12	14.5' LT	TOP OF CURB AT E. END OF CURB RETURN OF VALLEY GUTTER	
6	BURNING TREE, STA. 21+02.77	14.5' LT	TOP OF CURB AT W. END OF CURB RETURN OF VALLEY GUTTER	

NOTE: CONTRACTOR SHALL INSTALL SUBDIVISION BENCH MARKS ("FLAT SURVEY MARKERS NO. 8134-08 3" TOP DIAMETER" PROVIDED BY KANSAS BLUE PRINT CO., INC.) COSTS TO BE CONSIDERED SUBSIDIARY TO CONSTRUCTION OF COMBINED CURB AND GUTTER.



**LEGEND**

⊕ STREET SIGN & SIGN LOCATION  
(SEE SIGN ASSEMBLY TABLE FOR TYPE & STATION OF SIGN)

NOTE:  
TOP OF CURB ELEVATIONS SHOWN ARE FOR FULL CURB. CONSTRUCT CURB AND GUTTER AS NOTED.

PLotted: Monday, July 09, 2007 @ 05:27PM

J:\CIVIL\05291.DWG\PAV\PHASE 1\BIND\05291\_E1.DWG

**CASTLE ROCK**  
SHEET TITLE  
472-84521  
PROJECT NUMBER

DESIGN BY: DFL  
DRAWN BY: KKL  
CHECKED BY: GJA

ISSUED: July 2007  
REVISED: