

PAVING PLANS
KRUG SOUTH ADDITION
PHASE 1

CASTLE ROCK
SHEET TITLE
472-84521
PROJECT NUMBER

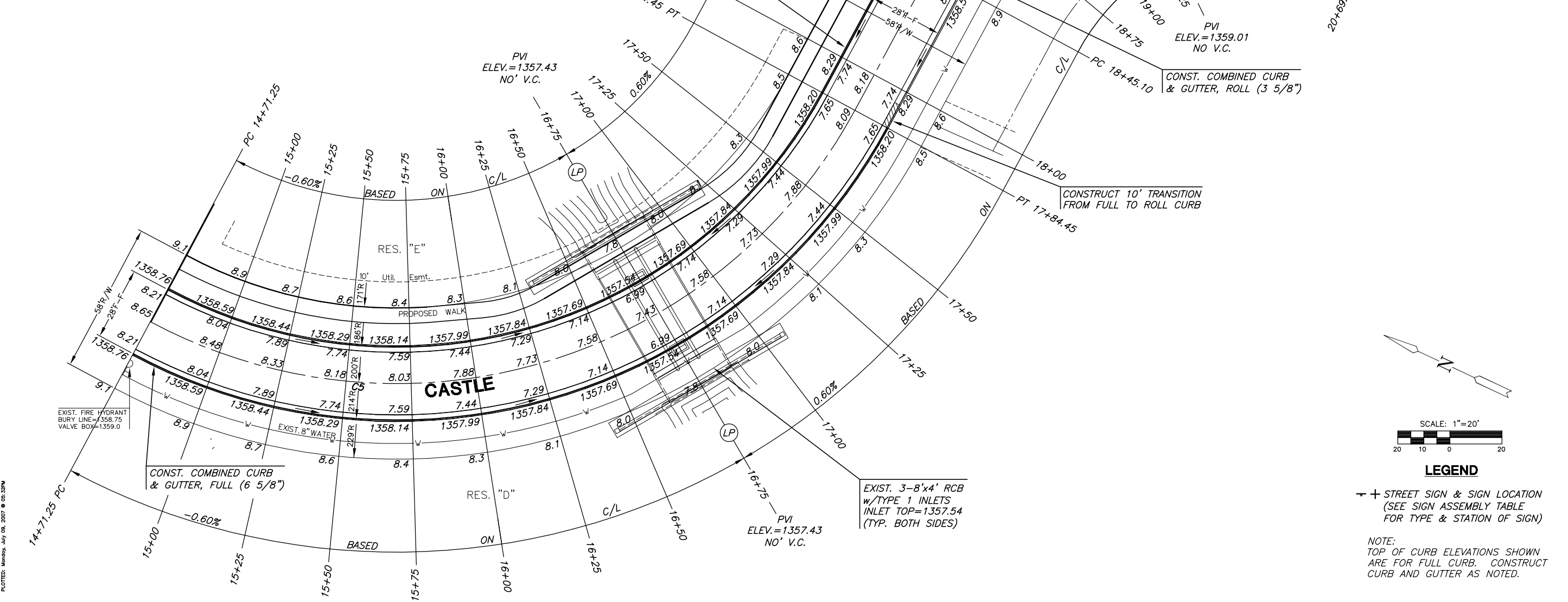
DFL
DESIGN BY
KKL
DRAWN BY
GJA
CHECKED BY

ISSUED
July 2007
REVISED

SHEET NO.
11 of 55

CURVE TABLE C5					
$\Delta = 89^{\circ}43'24''$ R = 200.00' T = 199.04' L = 313.19' LC = 282.16'					
CURVE DATA BASED ON CENTERLINE $\Delta / 2 = 44^{\circ}51'42''$					
STATION	ARC	CHORD LENGTH		DEFLECTION	TOTAL DEFLECTION
		8' Off LtCb	8' Off RtCb		
14+71.25	-	-	-	00°00'00"	00°00'00"
15+00.00	28.75'	25.57'	31.89'	04°07'05"	04°07'05"
15+25.00	25.00'	22.24'	27.73'	03°34'52"	07°41'57"
15+50.00	25.00'	22.24'	27.73'	03°34'52"	11°16'48"
15+75.00	25.00'	22.24'	27.73'	03°34'52"	14°51'40"
16+00.00	25.00'	22.24'	27.73'	03°34'52"	18°26'31"
16+25.00	25.00'	22.24'	27.73'	03°34'52"	22°01'23"
16+50.00	25.00'	22.24'	27.73'	03°34'52"	25°36'15"
16+75.00	25.00'	22.24'	27.73'	03°34'52"	29°11'06"
17+00.00	25.00'	22.24'	27.73'	03°34'52"	32°45'58"
17+25.00	25.00'	22.24'	27.73'	03°34'52"	36°20'49"
17+50.00	25.00'	22.24'	27.73'	03°34'52"	39°55'41"
17+75.00	25.00'	22.24'	27.73'	03°34'52"	43°30'32"
17+84.44	9.44'	8.40'	10.48'	01°21'10"	44°51'42"
Def/Ft = 8.59437 Min.					

CURVE TABLE C6					
$\Delta = 85^{\circ}42'21''$ R = 150.00' T = 139.16' L = 224.38' LC = 204.04'					
CURVE DATA BASED ON CENTERLINE $\Delta / 2 = 42^{\circ}51'10''$					
STATION	ARC	CHORD LENGTH		DEFLECTION	TOTAL DEFLECTION
		8' Off LtCb	8' Off RtCb		
18+45.10	-	-	-	00°00'00"	00°00'00"
18+75.00	29.90'	34.23'	25.47'	05°42'38"	05°42'38"
19+00.00	25.00'	28.63'	21.31'	04°46'29"	10°29'06"
19+25.00	25.00'	28.63'	21.31'	04°46'29"	15°15'35"
19+50.00	25.00'	28.63'	21.31'	04°46'29"	20°02'04"
19+75.00	25.00'	28.63'	21.31'	04°46'29"	24°48'33"
20+00.00	25.00'	28.63'	21.31'	04°46'29"	29°35'01"
20+25.00	25.00'	28.63'	21.31'	04°46'29"	34°21'30"
20+50.00	25.00'	28.63'	21.31'	04°46'29"	39°07'59"
20+69.48	19.48'	22.32'	16.61'	03°43'12"	42°51'11"
Def/Ft = 11.45916 Min.					



PLOTTER: Monday, July 09, 2007 @ 05:32PM

J:\CIVIL\05291\DWG\PAV\PHASE 1\BIND\05291_EZ.DWG