

PAVING PLANS
KRUG SOUTH ADDITION
PHASE 1

CASTLE ROCK
SHEET TITLE
472-84521
PROJECT NUMBER

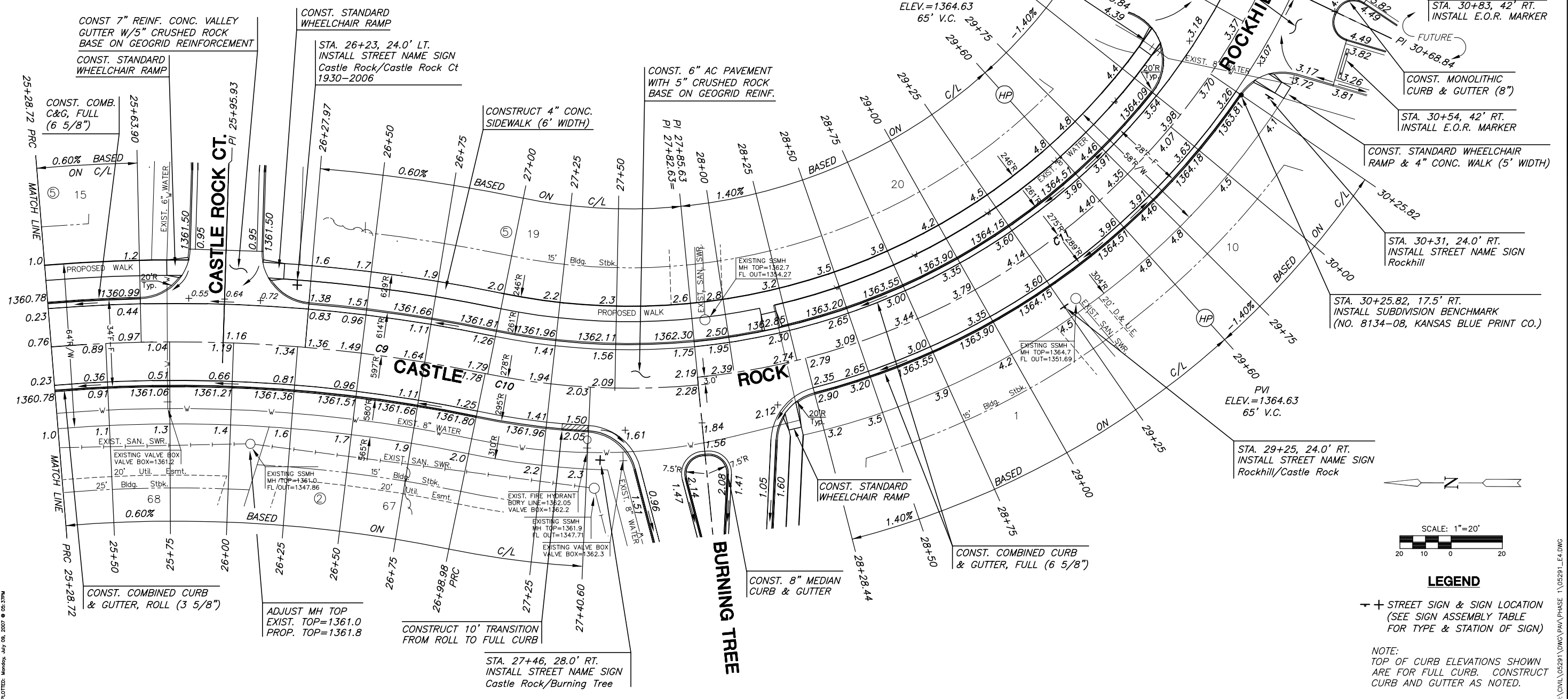
DESIGN BY: DFL
DRAWN BY: KKL
CHECKED BY: GJA

ISSUED: July 2007
REVISED:

SHEET NO.
13 of 55

CURVE TABLE C9						CURVE TABLE C11					
$\Delta = 16^{\circ}20'26''$ R = 597.00' T = 85.71' L = 170.26' LC = 169.69'						$\Delta = 100^{\circ}54'56''$ R = 275.00' T = 333.10' L = 484.36' LC = 424.14'					
CURVE DATA BASED ON CENTERLINE $\Delta / 2 = 08^{\circ}10'13''$						CURVE DATA BASED ON CENTERLINE $\Delta / 2 = 50^{\circ}27'28''$					
STATION	ARC	CHORD LENGTH		DEFLECTION	TOTAL DEFLECTION	STATION	ARC	CHORD LENGTH		DEFLECTION	TOTAL DEFLECTION
		8' Off LtcB	8' Off RtcB					8' Off LtcB	8' Off RtcB		
25+28.72	-	-	-	00°00'00"	00°00'00"	27+85.63	-	-	-	00°00'00"	00°00'00"
25+50.00	21.28'	22.17'	20.39'	01°01'16"	01°01'16"	28+00.00	14.37'	13.22'	15.52'	01°29'49"	01°29'49"
25+75.00	25.00'	26.04'	23.95'	01°11'59"	02°13'15"	28+25.00	25.00'	22.99'	26.99'	02°36'16"	04°06'05"
26+00.00	25.00'	26.04'	23.95'	01°11'59"	03°25'14"	28+50.00	25.00'	22.99'	26.99'	02°36'16"	06°42'20"
26+25.00	25.00'	26.04'	23.95'	01°11'59"	04°37'12"	28+75.00	25.00'	22.99'	26.99'	02°36'16"	09°18'36"
26+50.00	25.00'	26.04'	23.95'	01°11'59"	05°49'11"	29+00.00	25.00'	22.99'	26.99'	02°36'16"	11°54'52"
26+75.00	25.00'	26.04'	23.95'	01°11'59"	07°01'10"	29+25.00	25.00'	22.99'	26.99'	02°36'16"	14°31'08"
26+98.98	23.98'	24.98'	22.98'	01°09'03"	08°10'13"	29+50.00	25.00'	22.99'	26.99'	02°36'16"	17°07'23"
					Def/Ft = 2.87918 Min.	29+75.00	25.00'	22.99'	26.99'	02°36'16"	19°43'39"
						30+00.00	25.00'	22.99'	26.99'	02°36'16"	22°19'55"
						30+25.00	25.00'	22.99'	26.99'	02°36'16"	24°56'10"
						30+50.00	25.00'	22.99'	26.99'	02°36'16"	27°32'26"
						30+75.00	25.00'	22.99'	26.99'	02°36'16"	30°08'42"
						31+00.00	25.00'	22.99'	26.99'	02°36'16"	32°44'57"
						31+25.00	25.00'	22.99'	26.99'	02°36'16"	35°21'13"
						31+50.00	25.00'	22.99'	26.99'	02°36'16"	37°57'29"
						31+75.00	25.00'	22.99'	26.99'	02°36'16"	40°33'44"
						32+00.00	25.00'	22.99'	26.99'	02°36'16"	43°10'00"
						32+25.00	25.00'	22.99'	26.99'	02°36'16"	45°46'16"
						32+50.00	25.00'	22.99'	26.99'	02°36'16"	48°22'31"
						32+69.99	19.99'	18.39'	21.58'	02°04'57"	50°27'28"
										Def/Ft = 6.25045 Min.	

CURVE TABLE C10					
$\Delta = 17^{\circ}14'25''$ R = 278.00' T = 42.14' L = 83.65' LC = 83.33'					
CURVE DATA BASED ON CENTERLINE $\Delta / 2 = 08^{\circ}37'12''$					
STATION	ARC	CHORD LENGTH		DEFLECTION	TOTAL DEFLECTION
		8' Off LtcB	8' Off RtcB		
26+98.98	-	-	-	00°00'00"	00°00'00"
27+25.00	26.02'	23.67'	28.35'	02°40'53"	02°40'53"
27+50.00	25.00'	22.74'	27.24'	02°34'34"	05°15'27"
27+75.00	25.00'	22.74'	27.24'	02°34'34"	07°50'02"
27+82.63	7.63'	6.94'	8.32'	00°47'11"	08°37'12"
					Def/Ft = 6.18300 Min.



STA. 31+26, 22.0' LT.
INSTALL STREET NAME SIGN
Rockhill/Rockhill Ct
14006-14014

CONST. 7" REINF. CONC. VALLEY
GUTTER W/5" CRUSHED ROCK
BASE ON GEOGRID REINFORCEMENT

CONST. STANDARD
WHEELCHAIR RAMP

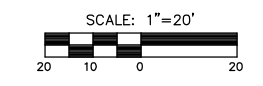
CONST. STANDARD WHEELCHAIR
RAMP & 4" CONC. WALK (5' WIDTH)

STA. 29+25, 24.0' RT.
INSTALL STREET NAME SIGN
Rockhill/Castle Rock

ADJUST MH TOP
EXIST. TOP=1361.0
PROP. TOP=1361.8

CONSTRUCT 10' TRANSITION
FROM ROLL TO FULL CURB

STA. 27+46, 28.0' RT.
INSTALL STREET NAME SIGN
Castle Rock/Burning Tree



LEGEND

— + — STREET SIGN & SIGN LOCATION
(SEE SIGN ASSEMBLY TABLE
FOR TYPE & STATION OF SIGN)

NOTE:
TOP OF CURB ELEVATIONS SHOWN
ARE FOR FULL CURB. CONSTRUCT
CURB AND GUTTER AS NOTED.