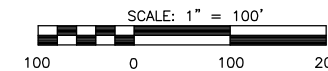


PAVING PLANS
KRUG SOUTH ADDITION
PHASE 1

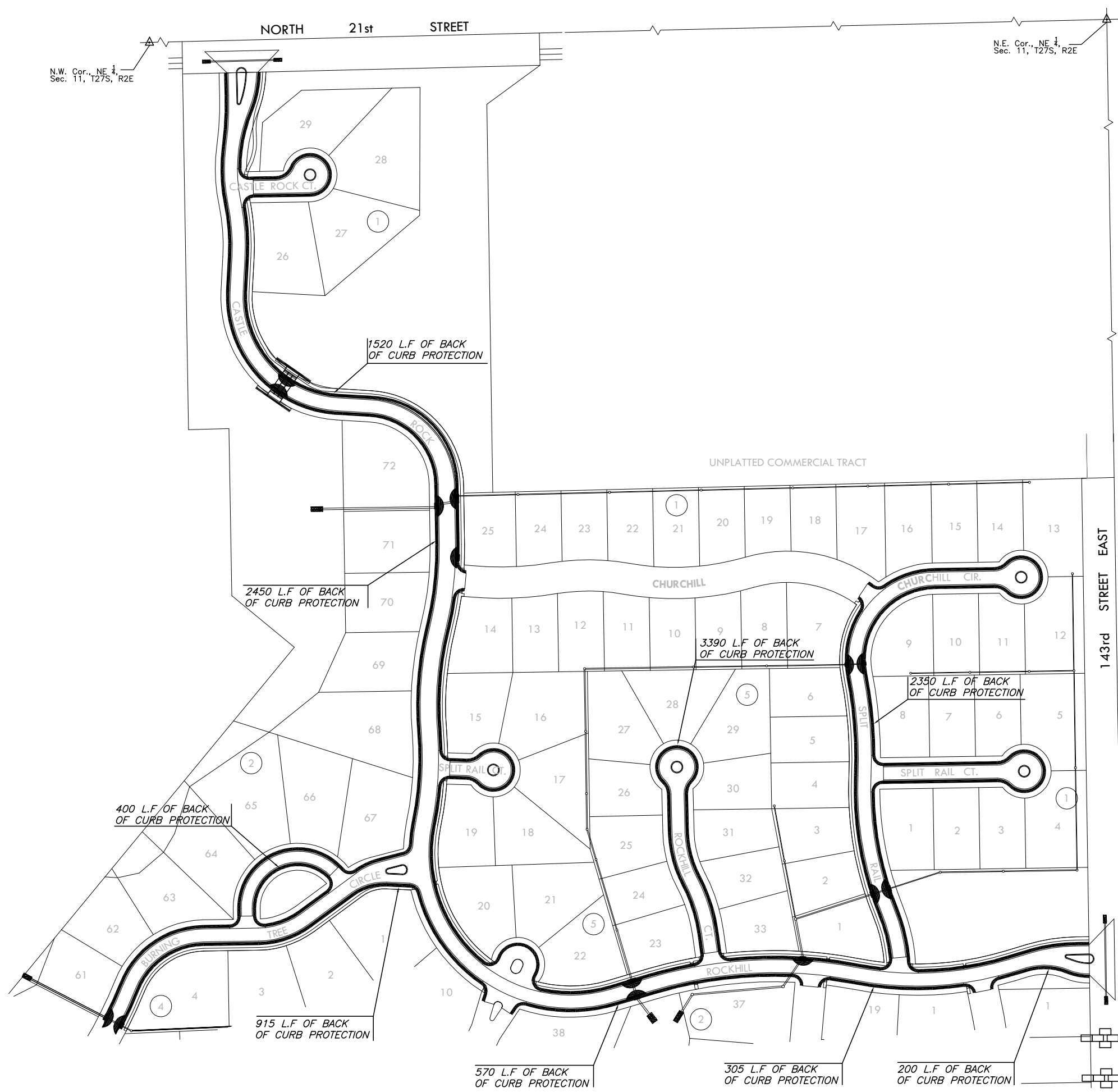
GENERAL NOTES

1. EROSION CONTROL IS TO MEET ALL FEDERAL, STATE, COUNTY & LOCAL CODE STANDARDS.
2. CONTRACTOR SHALL PROVIDE AND PRESERVE EROSION PROTECTION THROUGHOUT PROJECT CONSTRUCTION. THE PLAN PROVIDED HERE IS FOR FINAL PROTECTION, VARIOUS PHASES OF THIS PLAN SHALL BE IMPLEMENTED OR MODIFIED TO CONTROL EROSION. MODIFICATIONS OF THE PLAN SHALL BE APPROVED BY THE OWNERS REPRESENTATIVE.
3. SEEDING AREAS SHALL BE PREPARED FOR PLANTING WITH COMMON AGRICULTURAL TECHNIQUES. ALL RESERVE AREAS SHALL BE FINE GRADED USING SMALL EQUIPMENT. REMOVE EXISTING GRASS, VEGETATION AND TURF. DO NOT MIX INTO SURFACE SOIL. LOOSEN SOIL TO A DEPTH OF AT LEAST 6 INCHES. GRADE AREAS TO A SMOOTH UNIFORM SURFACE PLANE. ROLL, RAKE, AND REMOVE RIDGES AND FILL DEPRESSIONS. THE SURFACE SHALL BE FREE FROM STICKS, SMALL STONES, AND OTHER EXTRANEIOUS MATERIALS. APPROVE WITH OWNER'S REPRESENTATIVE BEFORE PLANTING.
4. CONTRACTOR IS RESPONSIBLE FOR MAINTAINING AND IMPLEMENTING ALL EROSION CONTROL. COST IS SUBSIDIARY TO PROJECT SEEDING.
5. ALL SEED SHALL BE DISTRIBUTED WITH AN ACCEPTABLE DRILL INTENDED FOR SUCH OPERATIONS, OR OTHER EQUIPMENT APPROVED BY THE OWNER'S REPRESENTATIVE. SEEDING DEPTH SHALL BE 1/4".
6. SEED AND FERTILIZE AS FOLLOWS:
PERENNIAL RYE @ 200 LBS./ACRE
10-20-10 @ 350 LBS./ACRE
7. ALL SEEDED AREAS SHALL BE IMMEDIATELY MULCHED W/ PRAIRIE HAY AT 2 TONS/ACRE. ANCHOR MULCH BY CRIMPING INTO TOPSOIL WITH SUITABLE MECHANICAL EQUIPMENT.
8. AREA TO BE SEEDED IS APPROXIMATELY 33 ACRES.



LEGEND

- PROPOSED STORM SEWER LINE
- PROPOSED CONTOURS
- CURB INLET FILTER
- TEMPORARY SWALE PROTECTION
- BACK OF CURB PROTECTION



N.W. Cor., NE 1/4,
Sec. 11, T27S, R2E

N.E. Cor., NE 1/4,
Sec. 11, T27S, R2E

UNPLATTED COMMERCIAL TRACT

143rd STREET EAST

PLOTED: Tuesday, July 10, 2007 @ 08:05AM

J:\CIVIL\05291\DWG\PAV\PHASE 1\BIND.EROSION.DWG

SEEDING AND EROSION CONTROL

SHEET TITLE
472-84521
PROJECT NUMBER

DFL
DESIGN BY
KKL
DRAWN BY
GJA
CHECKED BY

ISSUED
July 2007
REVISED

SHEET NO.
29 of 55