

FINAL PLAT

KRUG SOUTH ADDITION

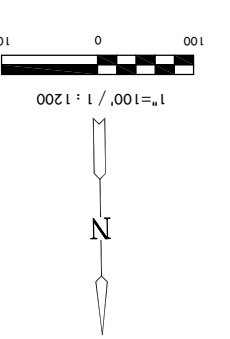
AN ADDITION TO WICHITA, SEDGWICK COUNTY, KANSAS

DRAINAGE RESERVES

LINE	LENGTH	BEARING
L1	218.52'	N12°28'30"W
L2	107.16'	N12°28'30"W
L3	130.23'	N07°28'47"W
L4	159.23'	S39°07'47"W
L5	40.00'	N80°18'03"E
L6	80.00'	N33°05'39"E
L7	40.37'	N13°28'00"E
L8	22.99'	N71°45'50"E
L9	20.41'	N07°32'55"W
L10	20.41'	S63°19'03"W
L11	93.04'	S21°19'37"W
L12	23.42'	S66°19'48"E
L13	41.15'	N77°41'34"E
L14	59.42'	N49°35'40"E
L15	40.00'	N30°32'25"E
L16	91.60'	N17°48'12"E
L17	178.55'	S5°32'53"W

MINIMUM PAD ELEVATIONS

LOTS (inclusive)	BLOCK	ELEVATION NGVD	1344.7	1344.9	1347.0	1348.9	1350.7	1354.2	1358.3	1359.0	1359.2
52, 53, 54	2	1344.7									
55	2	1344.9									
56 & 57	2	1347.0									
58, 59, 60	2	1348.0									
61	2	1348.9									
62 & 63	2	1350.7									
64, 65, 66	2	1354.2									
68	2	1358.3									
69	2	1359.0									
70	2	1359.2									



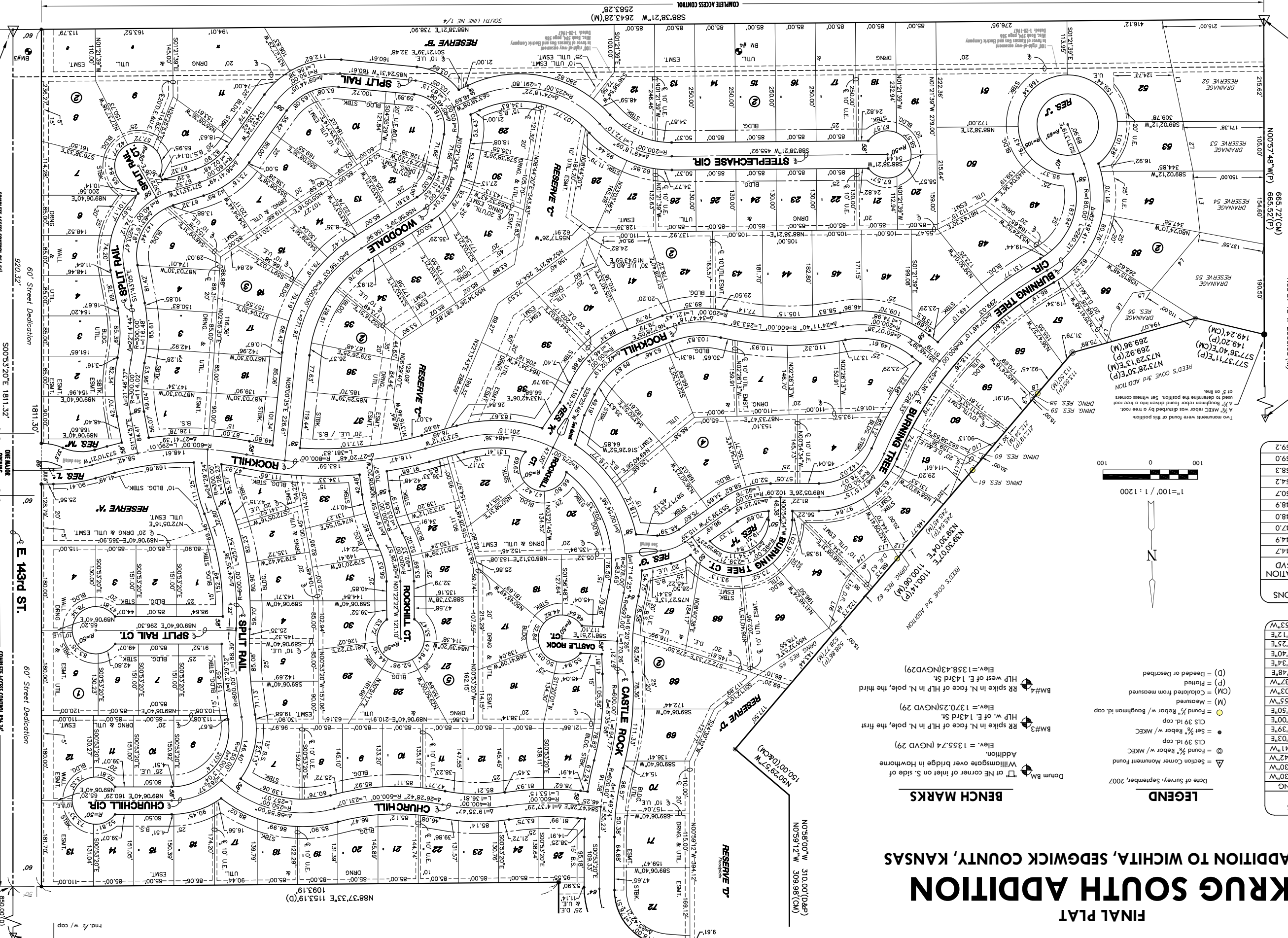
LEGEND

- ▲ Section Corner Monument Found
- ⊙ Found 3/8" Rebar w/ MKEC
- Found 3/8" Rebar w/ MKEC
- Found 1/2" Rebar w/ Boughman Id. cap
- (M) = Measured
- (CM) = Calculated from measured
- (P) = Plotted
- (D) = Deeded or Described
- ⊕ HLP spike in N. face of HLP in N. pole, the first
- ⊕ HLP w. of E. 1.43rd St.
- ⊕ HLP spike in N. face of HLP in N. pole, the third
- ⊕ HLP west of E. 1.43rd St.
- ⊕ Addition
- ⊕ Williamsgate over bridge in Hawthorne
- ⊕ or NE corner of inlet on S. side of
- Datum B.M.

Date of Survey: September, 2007

BENCH MARKS

- ⊕ Williamsgate over bridge in Hawthorne
- ⊕ or NE corner of inlet on S. side of
- ⊕ Addition
- ⊕ HLP spike in N. face of HLP in N. pole, the first
- ⊕ HLP w. of E. 1.43rd St.
- ⊕ HLP spike in N. face of HLP in N. pole, the third
- ⊕ HLP west of E. 1.43rd St.
- ⊕ (M) = Measured
- ⊕ (CM) = Calculated from measured
- ⊕ (P) = Plotted
- ⊕ (D) = Deeded or Described
- Elev. = 1355.74 (NGVD 29)
- Elev. = 1370.25 (NGVD 29)
- Elev. = 1358.43 (NGVD 29)



MKEC
ENGINEERING
CONSULTANTS, INC.

411 N. WEBB ROAD
WICHITA, KS. 67206
316-684-9600

55 Cor. NE 1/4, Sec. 11,
T22S, R2E, 6th P.M.

60' Street Dedication
920.32'

60' Street Dedication
1811.30'

60' Street Dedication
E 143rd St.

60' Street Dedication
1800.00'

60' Street Dedication
1800.00'

60' Street Dedication
1800.00'

60' Street Dedication
1800.00'

SW. Cor. NE 1/4, Sec. 11,
T22S, R2E, 6th P.M.

665.72(CM)
665.52(P)

665.72(CM)
665.52(P)

665.72(CM)
665.52(P)

665.72(CM)
665.52(P)

665.72(CM)
665.52(P)

665.72(CM)
665.52(P)

665.72(CM)
665.52(P)

665.72(CM)
665.52(P)

665.72(CM)
665.52(P)

665.72(CM)
665.52(P)

665.72(CM)
665.52(P)

665.72(CM)
665.52(P)

665.72(CM)
665.52(P)

665.72(CM)
665.52(P)

665.72(CM)
665.52(P)

665.72(CM)
665.52(P)

665.72(CM)
665.52(P)

665.72(CM)
665.52(P)