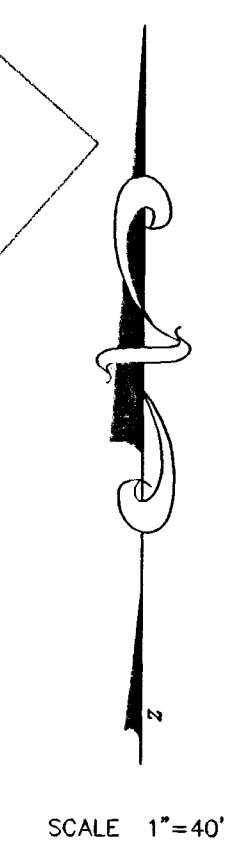
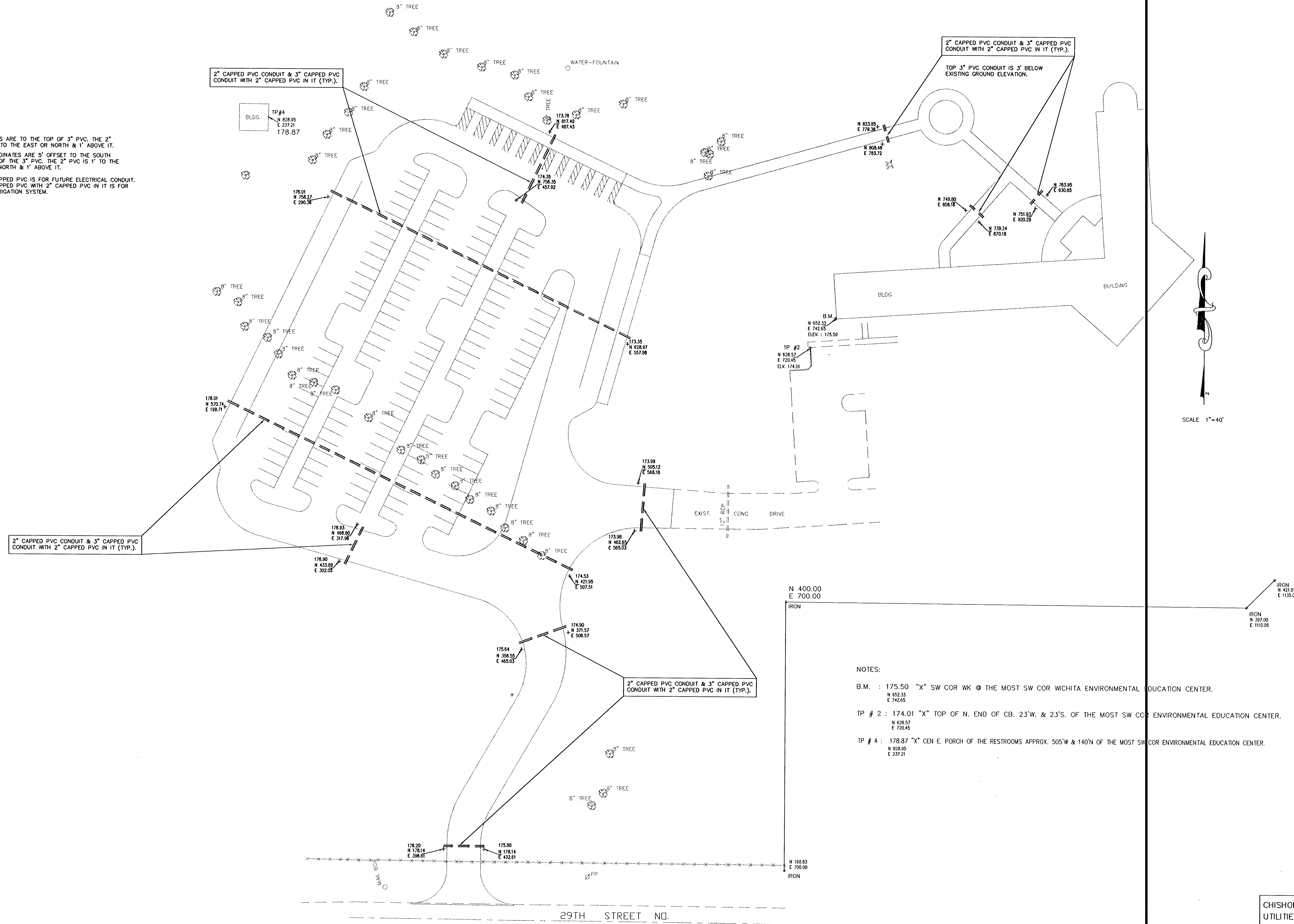


NOTES:

ELEVATIONS ARE TO THE TOP OF 3" PVC. THE 2" PVC IS 1' TO THE EAST OR NORTH & 1' ABOVE IT. THE COORDINATES ARE 5' OFFSET TO THE SOUTH OR WEST OF THE 3" PVC. THE 2" PVC IS 1' TO THE EAST OR NORTH & 1' ABOVE IT.

THE 2" CAPPED PVC IS FOR FUTURE ELECTRICAL CONDUIT. THE 3" CAPPED PVC WITH 2" CAPPED PVC IN IT IS FOR FUTURE IRRIGATION SYSTEM.



NOTES:

- B.M. : 175.50 "X" SW COR WK @ THE MOST SW COR WICHITA ENVIRONMENTAL EDUCATION CENTER.
N 652.33
E 742.65
- TP # 2 : 174.01 "X" TOP OF N. END OF CB. 23'W. & 23'S. OF THE MOST SW COR ENVIRONMENTAL EDUCATION CENTER.
N 626.57
E 720.45
- TP # 4 : 178.87 "X" CEN E. PORCH OF THE RESTROOMS APPROX. 505'W & 140'N OF THE MOST SW COR ENVIRONMENTAL EDUCATION CENTER.
N 828.95
E 237.21

CHISHOLM PARK PARKING LOT
UTILITIES CONDUIT PLAN
INDEX # 785501
SHEET 3 OF 5
DRAWN: B.R. DESIGN: B.R.