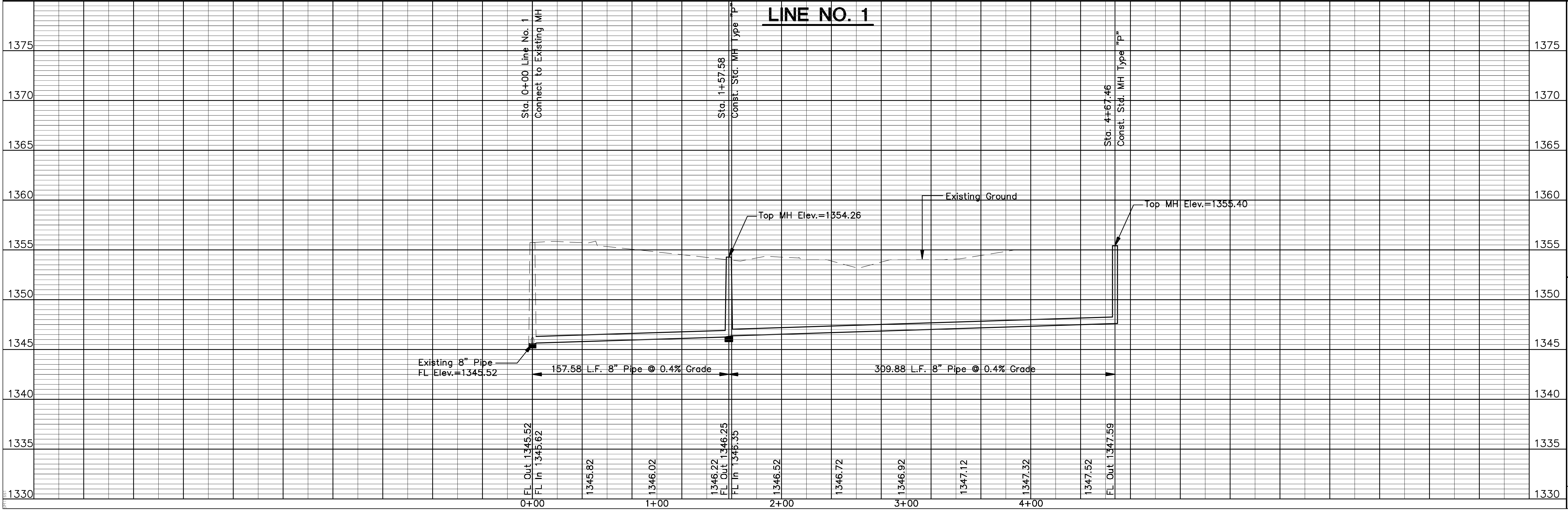


Contractor Shall Take Care To Ensure That Existing Trees Remain Undisturbed



<b>POE &amp; ASSOCIATES, INC.</b> CONSULTING ENGINEERS 5940 E. Central, Suite 200 • Wichita, KS 67208-4242 Phone 316/685-4114 • FAX 316/685-4444		WADLEY RANCH ADDITION LATERAL 15, MAIN 7, NORTHWEST INTERCEPTOR SEWER LINE NO. 1 <b>CITY OF WICHITA, KANSAS</b> JIM ARMOUR P.E. - CITY ENGINEER PROJECT NO. 468-84332 OCA NO.744227
Designed By: I. Austin/S. Schmidt Drawn By: S. Schmidt/ A. Moss. P.e Job No.: 821\WadleyBose.dwg Date: 05/08/2007	<b>FINAL</b>	Revision No. Date By Approved 1 2 3 4
Sheet 2 of 9		