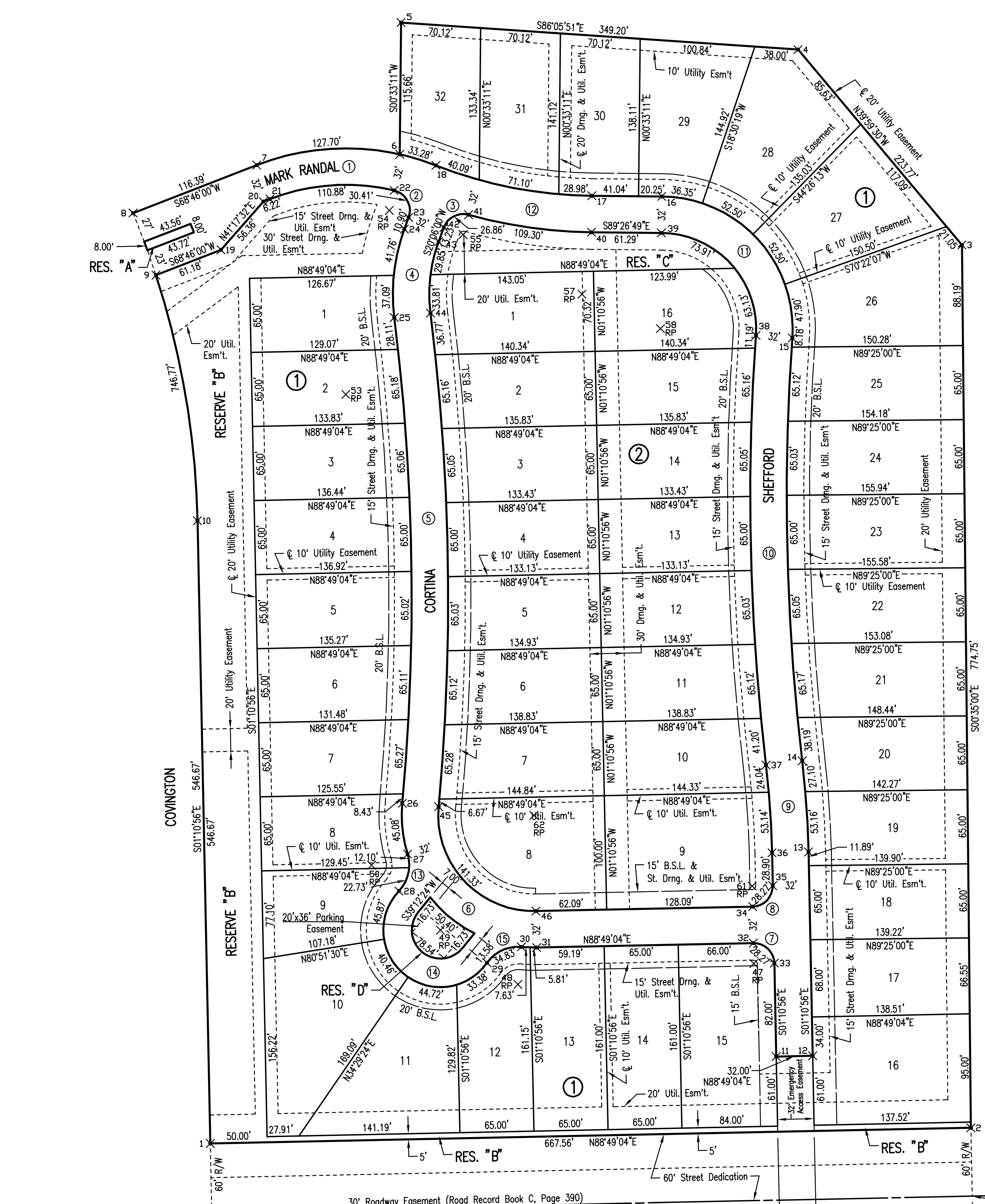


Saved: 06-05-2007 6:21:54 AM by BJS
 Plot Scale: 1/60 06-11-2007 10:04:30 AM by REFJ
 J:\SENTOUT\2006\066111\2007-06-05 to Wichita\Street\DWG\03-PLAT AND HORIZONTAL CONTROL



COORDINATE LIST		
POINT	NORTH	EAST
7	26119.194018	16733.497523
8	26077.041027	16635.007691
9	26022.612441	16645.071348
10	25807.140885	16681.498764
11	25336.853287	17189.403788
12	25337.513463	17221.396978
13	25516.375117	17217.706228
14	25596.418882	17212.184793
15	25967.517735	17203.491588
16	26091.656277	17088.897607
17	26092.247941	17027.609351
18	26118.871623	16890.778139
19	26044.770514	16702.099356
20	26087.113783	16739.289283
21	26089.366387	16745.068347
22	26098.927088	16854.034867
23	26073.723556	16866.799606
24	26062.990222	16863.054750
25	25985.375511	16854.223532
26	25559.065283	16861.283616
27	25514.508709	16865.898317
28	25482.150248	16858.314381
29	25419.109737	16935.591441
30	25433.038368	16965.767248
31	25432.536954	16979.195729
32	25436.460655	17169.344569
33	25418.835835	17187.712087
34	25468.453844	17169.715918
35	25488.821362	17186.309214
36	25515.712941	17185.713039
37	25592.680022	17180.403966
38	25969.764341	17171.570549
39	26059.657768	17088.588701
40	26060.249432	17027.300444
41	26075.567554	16919.398563
42	26064.417052	16897.652268
43	26051.993144	16893.105778
44	25989.340305	16885.976964
45	25556.154106	16893.150919
46	25464.530144	16978.335533
47	25418.464486	17169.715918
48	25408.680336	16982.678887
49	25447.778983	16894.627135
50	25504.835283	16834.347963
51	25739.558272	14885.510784
52	25791.734670	15934.888700
53	25917.857509	16811.725461
54	26079.409412	16849.895903
55	26058.231196	16914.555971
56	26476.230049	17031.316233
57	26005.942881	17018.944458
58	25975.661682	17087.777820
59	25828.228149	19182.596035
60	25499.208544	16385.883304
61	25486.450013	17168.313045
62	25448.31226	16976.802592

CURVE DETAILS				
④ = CURVE NUMBER				
① CURVE NO. 1 R=184.00' Δ=34°31'37" Δ=42°42'05" R=216.00'	④ CURVE NO. 4 R=134.00' Δ=27°13'02" R=166.00'	⑦ CURVE NO. 7 R=18.00' Δ=90°00'00"	⑩ CURVE NO. 10 R=1984.00' Δ=10°44'08" R=2016.00'	⑬ CURVE NO. 13 R=33.00' Δ=60°28'20"
② CURVE NO. 2 R=18.00' Δ=96°48'23" R=2016.00'	⑤ CURVE NO. 5 R=1984.00' Δ=12°20'13" R=2016.00'	⑧ CURVE NO. 8 R=18.00' Δ=90°00'00"	⑪ CURVE NO. 11 R=84.00' Δ=93°28'22" R=116.00'	⑭ CURVE NO. 14 R=25.00' Δ=180°00'00" Δ=188°26'24" R=50.00'
③ CURVE NO. 3 R=18.00' Δ=85°30'24"	⑥ CURVE NO. 6 R=84.00' Δ=96°24'06" R=116.00'	⑨ CURVE NO. 9 R=800.00' Δ=05°31'39" R=832.00'	⑫ CURVE NO. 12 R=384.00' Δ=20°54'54" Δ=19°03'13" R=416.00'	⑮ CURVE NO. 15 R=33.00' Δ=60°28'20"

SW Cor., Sec. 31, T26S, R1W
 Found Pipe w/Sedgwick County
 Cap in Concrete

30' Roadway Easement (Road Record Book C, Page 390)
 ② 29TH STREET NORTH = SECTION LINE

Complete Access Control 498.09'
 Emergency Access Opening 137.47'

One 32' Complete Access Control
 Access Opening

S 1/4 Cor. Sec. 31, T26S, R1W
 Found Stone & 3/4" IP on
 West side

No.	Revision	By	Date
FONTANA 3RD ADDITION			
PLAT			
JAMES L. ARMOUR, P.E. - CITY ENGINEER CITY OF WICHITA PROJECT NO. 472-84091			
Professional Engineering Consultants, P.A. 303 S. TOPEKA • WICHITA, KANSAS 67202 316-262-2691 • FAX 316-262-3003			
Designed by	BDB, BMM	Job No.	35-06611-000
Drawn by	BJS, TAT, BMM	Date	November 2006
			Sheet 3 of 58