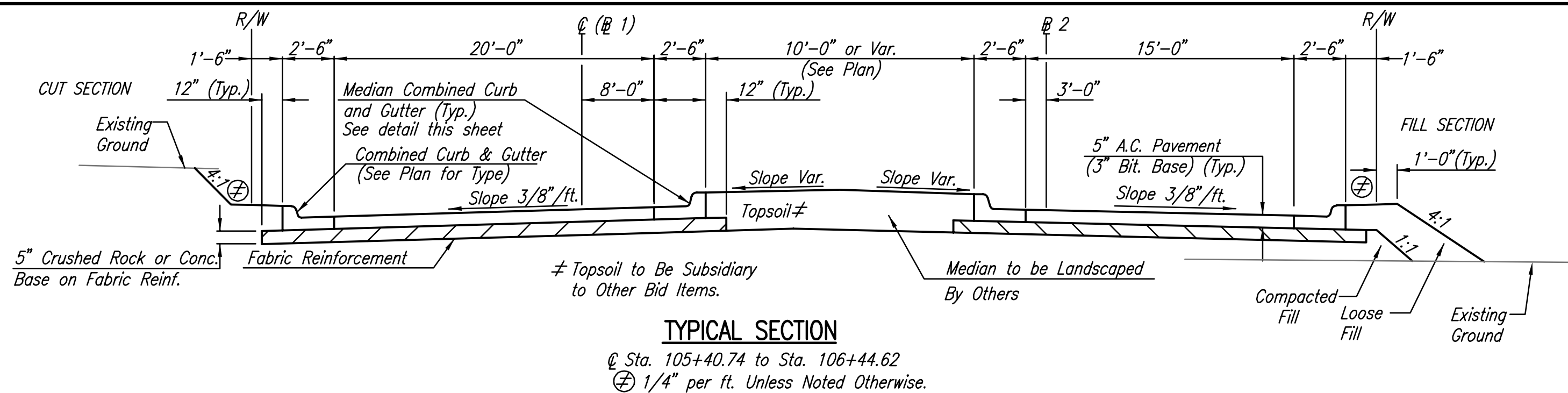


MEDIAN COMBINED CURB & GUTTER
(6 5/8")



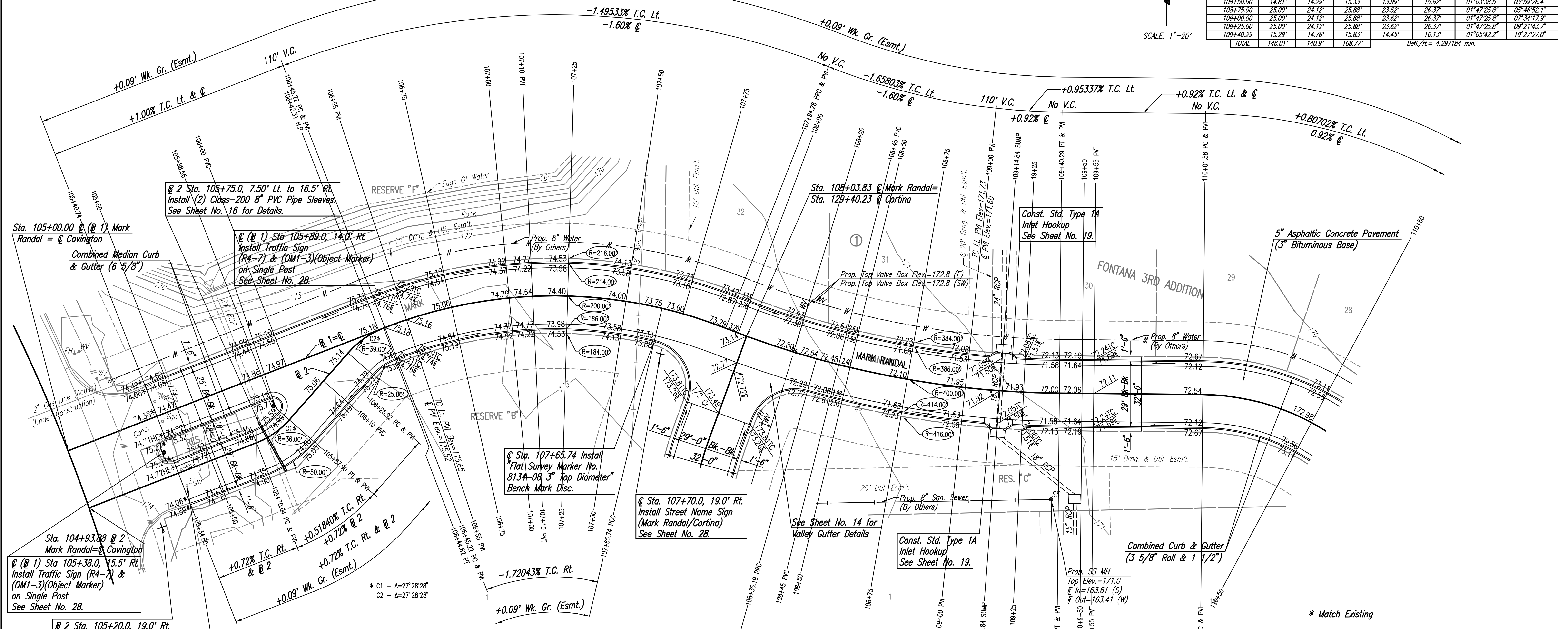
TYPICAL SECTION
@ Sta. 105+40.74 to Sta. 106+44.62
⊕ 1/4" per ft. Unless Noted Otherwise.

| WATER VALVE BOX ELEVATIONS | | | |
|----------------------------|------------------|-----------|--------------------|
| STREET | STATION | OFFSET | PROPOSED ELEVATION |
| MARK RANDAL | @ Sta. 108+25.07 | 21.0' Lt. | 172.8 |
| MARK RANDAL | @ Sta. 108+27.19 | 23.0' Lt. | 172.8 |

| @ CURVE DATA | | | | | | |
|--|--------------|------------------|------------|-----------------------|------------------------|--------------------|
| A=20°54'54" L D=14° 19' 26.2" R=400.00' L=146.01' T=73.83' E=6.76' | | | | | | |
| CURVE DATA BASED ON @ radius Δ/2= 10° 27' 27" | | | | | | |
| @ STATION | @ ARC LENGTH | FACE CURB LENGTH | | CHORD LENGTH | | DEFLECTION ANGLE |
| | | LEFT CURB | RIGHT CURB | 8" OFF LEFT FACE CURB | 8" OFF RIGHT FACE CURB | @ TOTAL DEFLECTION |
| 107+94.28 | | | | | | 0°00'00.0" |
| 108+00.00 | 5.72' | 5.52' | | 5.41' | | 00°24'34.8" |
| 108+25.00 | 25.00' | 24.12' | | 23.62' | | 01°47'25.8" |
| 108+35.19 | 10.19' | 9.83' | | 9.63' | | 02°55'47.9" |
| 108+50.00 | 14.81' | 14.29' | 15.33' | 13.99' | 15.62' | 01°03'38.5" |
| 108+75.00 | 25.00' | 24.12' | 25.88' | 23.62' | 26.37' | 01°47'25.8" |
| 109+00.00 | 25.00' | 24.12' | 25.88' | 23.62' | 26.37' | 01°47'25.8" |
| 109+25.00 | 25.00' | 24.12' | 25.88' | 23.62' | 26.37' | 01°47'25.8" |
| 109+40.29 | 15.29' | 14.76' | 15.83' | 14.45' | 16.13' | 01°05'42.2" |
| TOTAL | 146.01' | 140.9' | 108.77' | | | 10°27'27.0" |

Defl./ft. = 4.297184 min.

SCALE: 1"=20'



| @ CURVE DATA | | | | | | |
|--|--------------|------------------|------------|-----------------------|------------------------|--------------------|
| A=42°42'5" R D=28° 38' 52.4" R=200.00' L=149.06' T=78.18' E=14.74' | | | | | | |
| CURVE DATA BASED ON @ radius Δ/2= 21° 21' 2.5" | | | | | | |
| @ STATION | @ ARC LENGTH | FACE CURB LENGTH | | CHORD LENGTH | | DEFLECTION ANGLE |
| | | LEFT CURB | RIGHT CURB | 8" OFF LEFT FACE CURB | 8" OFF RIGHT FACE CURB | @ TOTAL DEFLECTION |
| 106+45.22 | | | | | | 0°00'00.0" |
| 106+50.00 | 4.78' | 5.11' | 4.45' | 5.31' | 4.25' | 00°41'04.9" |
| 106+75.00 | 25.00' | 26.75' | 23.25' | 27.73' | 22.24' | 03°34'51.6" |
| 107+00.00 | 25.00' | 26.75' | 23.25' | 27.73' | 22.24' | 07°50'48.0" |
| 107+25.00 | 25.00' | 26.75' | 23.25' | 27.73' | 22.24' | 03°34'51.6" |
| 107+50.00 | 25.00' | 26.75' | 23.25' | 27.73' | 22.24' | 03°34'51.6" |
| 107+65.74 | 15.74' | 16.84' | 14.64' | 17.47' | 14.00' | 02°15'16.5" |
| 107+75.00 | 9.26' | 9.91' | | 10.28' | | 01°19'35.0" |
| 107+94.28 | 19.28' | 20.63' | | 21.39' | | 02°45'42.0" |
| TOTAL | 149.06' | 159.49' | 112.08' | | | 21°21'02.6" |

Defl./ft. = 8.594367 min.

NOTE: THIS STREET TO BE CONSTRUCTED WITH ROLL-TYPE CURB. TOP OF CURB ELEVATIONS GIVEN ARE FOR FULL HEIGHT CURB.

* Match Existing

SAVED: 06-05-2007 6:35:46 AM BY: BJS
 PLOT SCALE: 1:20 06-11-2007 10:02:18 AM BY: REJ
 J:\SENT\01\2006\0611\2007-06-05 to Wichita\Street\DWG\08-STR-MARK RANDAL

| | | | |
|---|---------------|---------|---------------|
| No. | Revision | By | Date |
| FONTANA 3RD ADDITION | | | |
| MARK RANDAL | | | |
| STA. 105+00 TO STA. 110+50 JAMES L. ARMOUR, P.E. - CITY ENGINEER CITY OF WICHITA PROJECT NO. 472-84091 | | | |
| Professional Engineering Consultants, P.A. 303 S. TOPEKA • WICHITA, KANSAS 67202 316-262-2691 • FAX 316-262-3003 | | | |
| Designed by | BDB, BMM | Job No. | 35-06611-000 |
| Drawn by | BJS, TAT, BMM | Date | November 2006 |
| | | | Sheet 8 of 58 |

