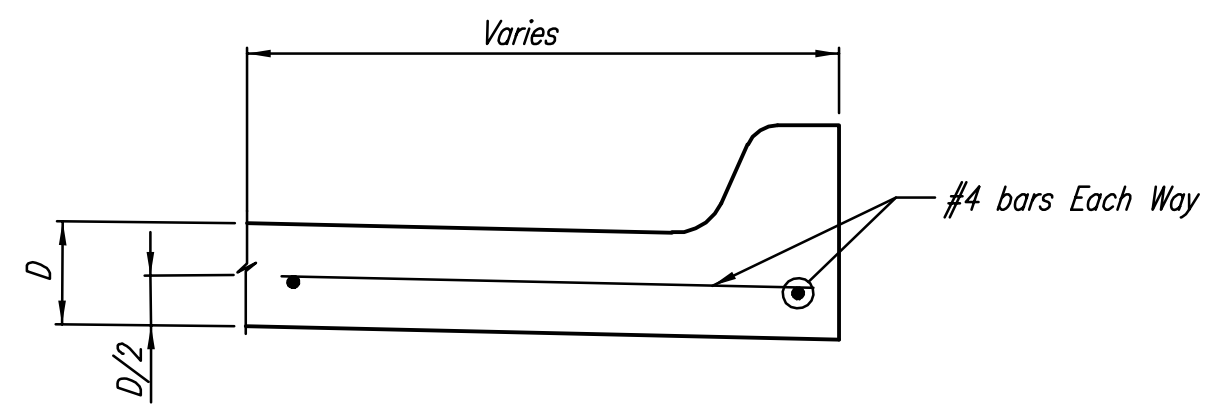


PARKING BAY DETAILS

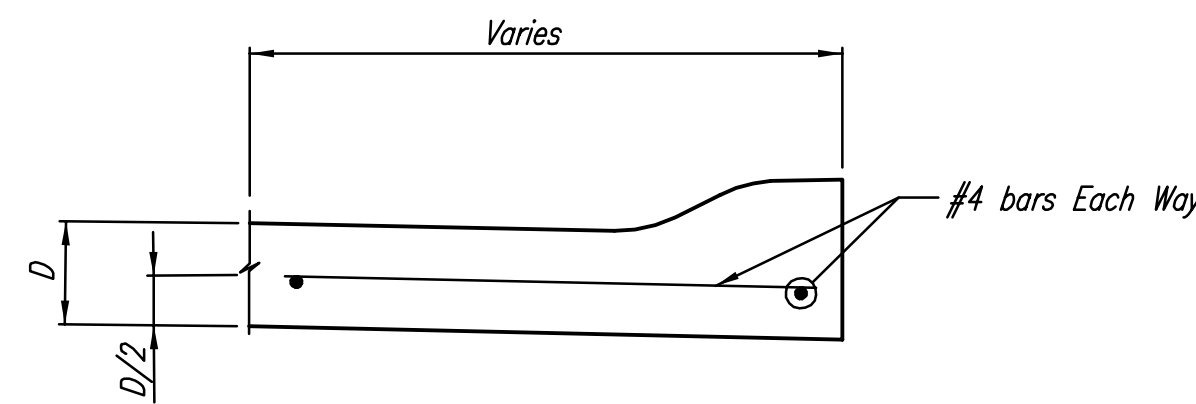
NOTE: PORTION OF THIS STREET TO BE CONSTRUCTED WITH ROLL-TYPE CURB. TOP OF CURB ELEVATIONS GIVEN ARE FOR FULL HEIGHT CURB.

** 3' Transition from 6 5/8" Monolithic Edge Curb to 3 5/8" Monolithic Edge Curb.

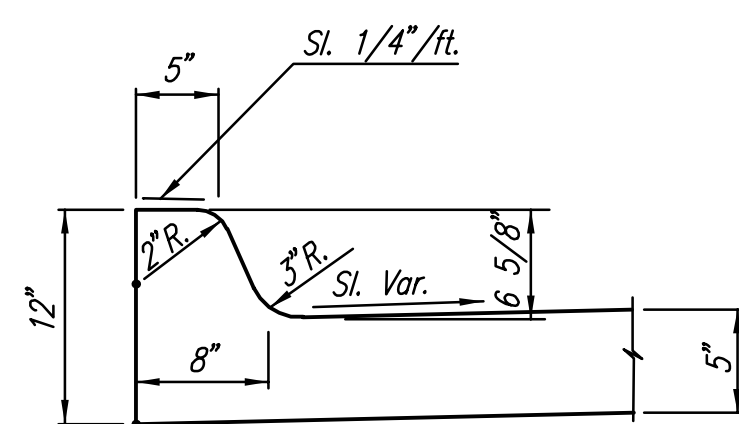
6"x12" W4xW4 WIRE FABRIC REINFORCING SHALL BE PLACED SUCH THAT THE WIRES WITH THE 6" SPACING WILL RUN PARALLEL WITH THE LONGITUDINAL JOINT.



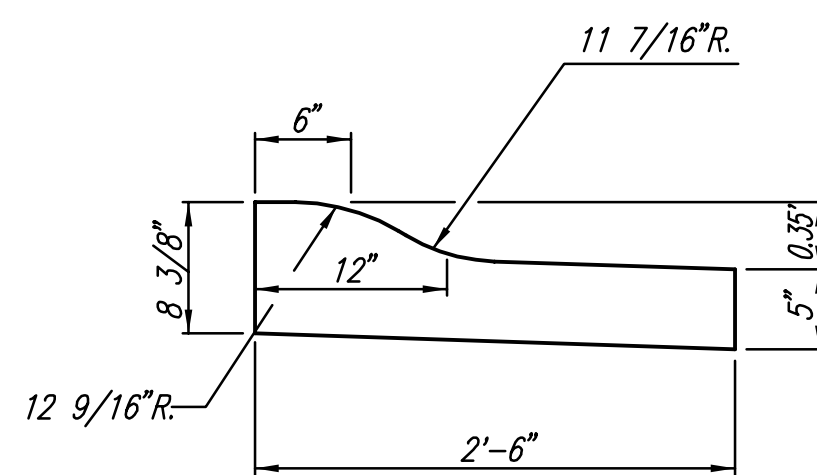
SECTION B-B



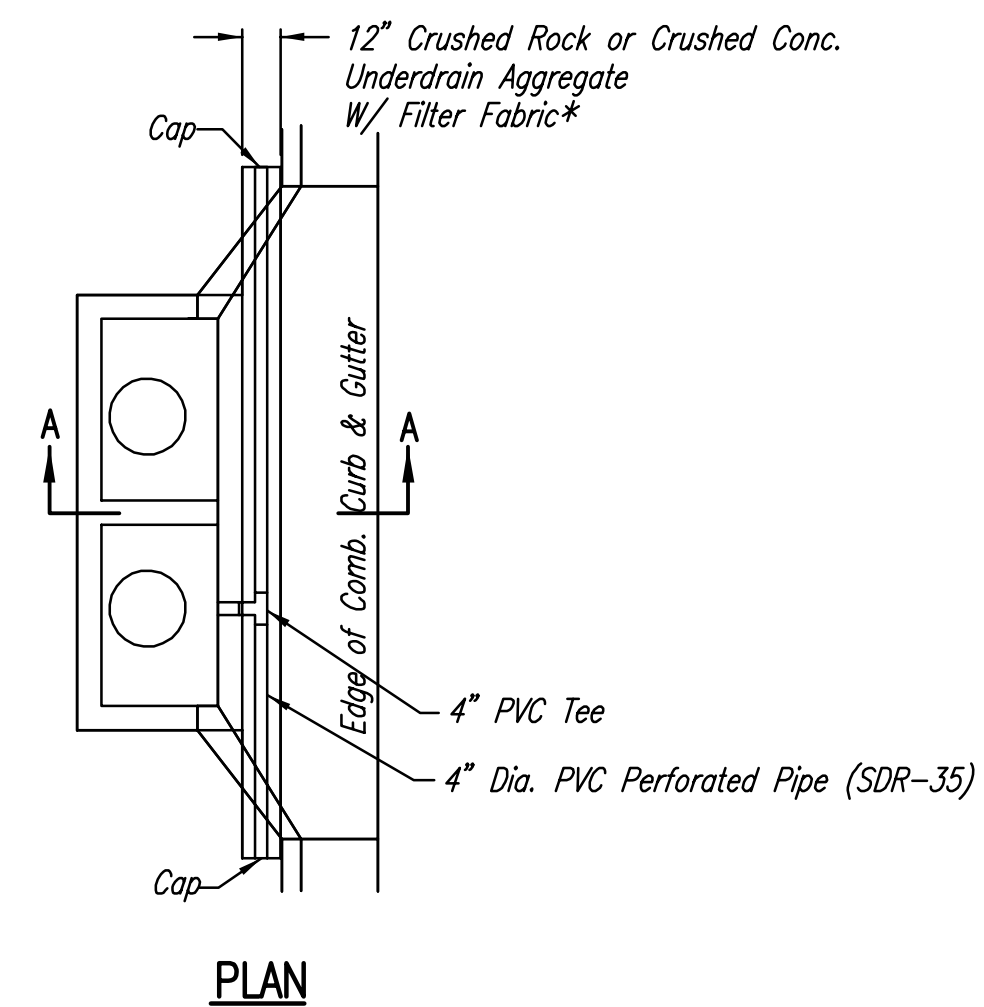
SECTION C-C (ROLL-TYPE CURB)



DETAIL A



DETAIL B (ROLL-TYPE CURB)

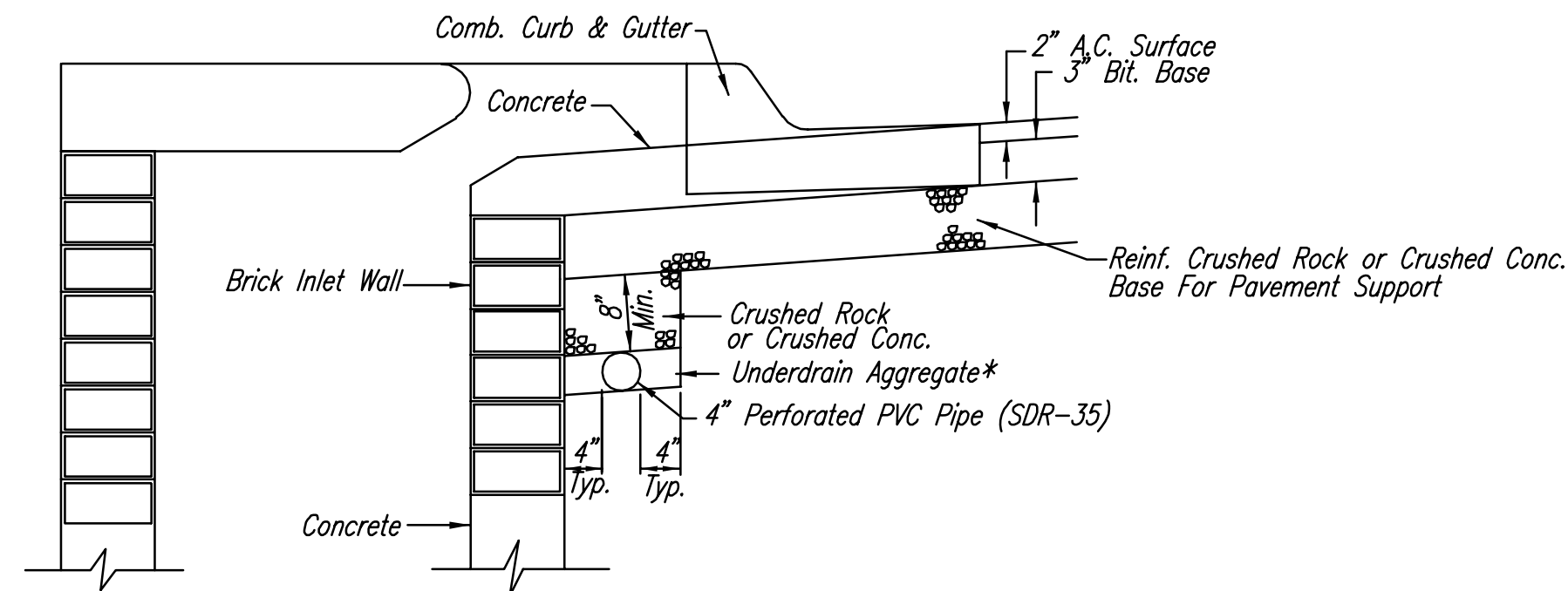


* UNDERDRAIN AGGREGATE PERCENT OF AGGREGATE RETAINED

1"	0
3/4"	0-10
3/8"	45-80
#4	90-100
#8	95-100

ROCK QUALITY SHALL CONFORM TO THE REQUIREMENTS SPECIFIED BY THE KDOT 1990 EDITION STANDARD SPECIFICATION SUBSECTION 1102 FOR DURABILITY CLASS 1.

PAVEMENT UNDERDRAIN LOCATIONS		
STREET	STATION	SIDE
MARK RANDAL	109+14.84	LT. & RT.



Min. 16 Perforations Per Lin. Ft. @ 1/4" Dia. Perforations To Be on Bottom Half

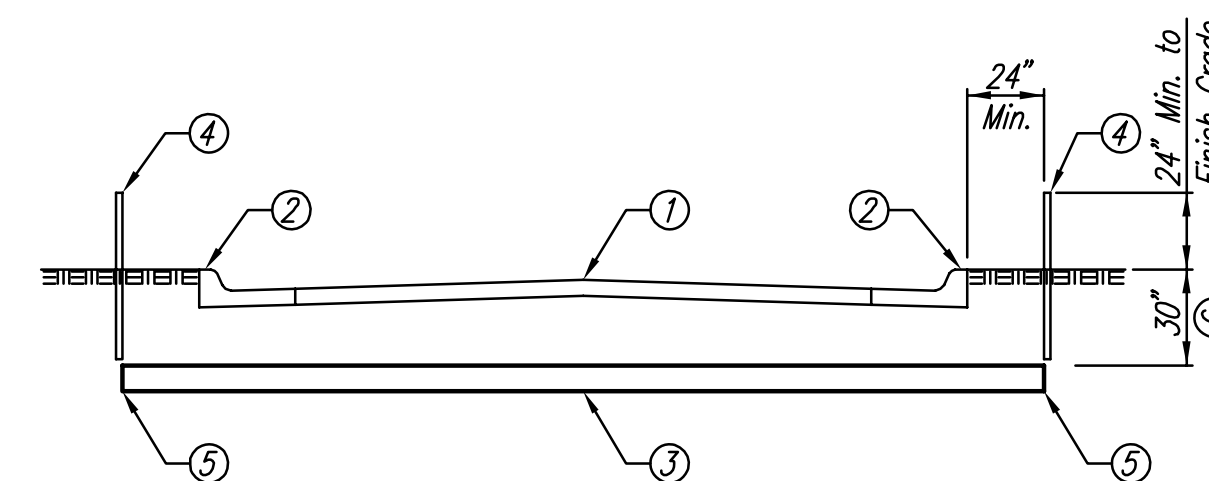
SECTION A-A

PAVEMENT UNDERDRAIN DETAIL

NOTE: PLACE 4" PVC PERFORATED PIPE AT ALL DRAINAGE SUMP LOCATIONS.

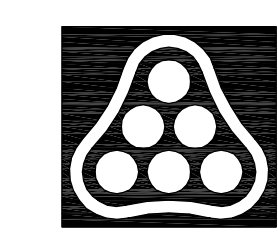
COST OF UNDERDRAIN SYSTEM TO BE INCIDENTAL TO THE REINFORCED CRUSHED ROCK OR REINFORCED CRUSHED CONCRETE BASE.

INLET TYPE MAY VARY FROM THAT SHOWN.



CLASS 200 PVC SLEEVES

- ① Pavement/Street
- ② Permanent Mark on Top of Curb, Stamped in Wet Concrete—"x" or "s"
- ③ 8" Class 200 PVC Sleeve Extended 2' Past Back of Curbs. Sleeves Shall be Bedded and Backfilled in Accordance with City of Wichita Specifications for Flexible Sanitary/Storm Sewer Pipe.
- ④ Temporary T-Post Marker, Until Permanent Benchmark is Made in Concrete (2 Total)
- ⑤ 8" PVC Caps—Not Glued (2 Total)
- ⑥ Adjust Depth Where Necessary to Avoid Other Utilities.



No.	Revision	By	Date
FONTANA 3RD ADDITION			
MISCELLANEOUS PAVING DETAILS			
JAMES L. ARMOUR, P.E.— CITY ENGINEER CITY OF WICHITA PROJECT NO. 472-84091			
Professional Engineering Consultants, P.A. 303 S. TOPEKA • WICHITA, KANSAS 67202 316-262-2691 • FAX 316-262-3003			
Designed by	BDB, BMM	Job No.	35-06611-000
Drawn by	BJS, TAT, BMM	Date	November 2006
			Sheet 16 of 58